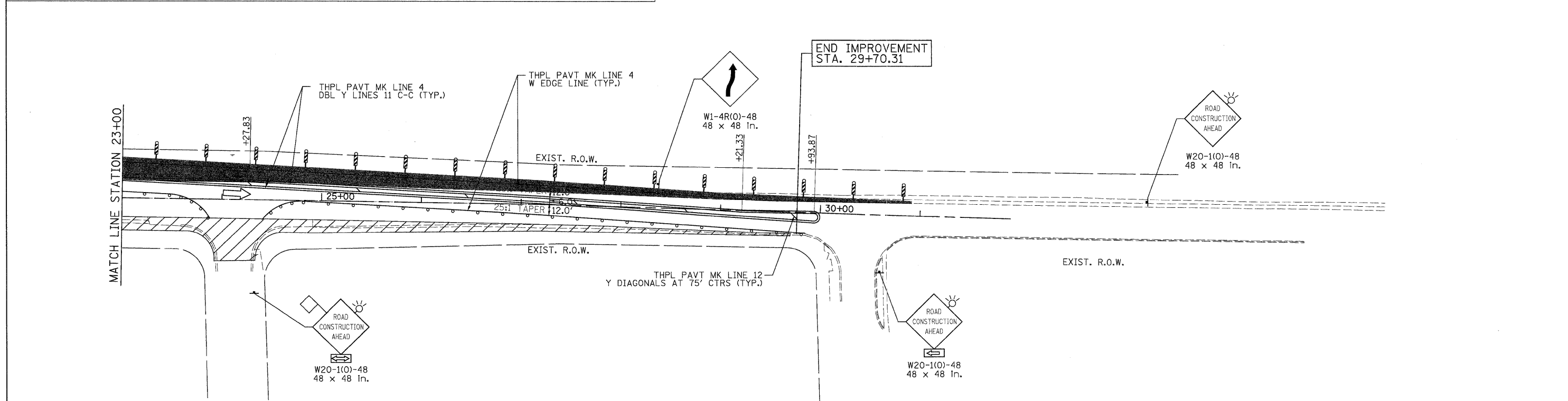


LEGEND

	TEMPORARY PAVEMENT		TYPE II BARRICADES OR DRUMS WITH STEADY BURNING LIGHTS @ 50 FT CENTERS ALONG ROADWAY (TANGENT), 25 FT CENTERS ALONG TAPERS AND 12 FT CENTERS ALONG RADII		VERTICAL PANEL WITH STEADY BURNING LIGHT 50 FT C-C
	WORK ZONE		TYPE III BARRICADES WITH FLASHING LIGHTS		
	DIRECTION OF TRAFFIC				



PATRICK ENGINEERING INC. Lisle, Illinois	USER NAME = Rdky.Lisle	DESIGNED - MJV	REVISED -	MCHENRY COUNTY DIVISION OF TRANSPORTATION	RAKOW ROAD FROM ACKMAN ROAD TO ILLINOIS ROUTE 31 SUGGESTED STAGING OF CONSTRUCTION & TRAFFIC CONTROL PINGREE ROAD STAGE 2A		F.A.P. RTE. 0336	SECTION 05-00308-00-WR	COUNTY MCHENRY	TOTAL SHEETS 606	SHEET NO. 133
	PLOT CONFIG = PDF(Grey, Large).plt	DRAWN - EJB	REVISED -		SCALE: 1"=50'	SHEET NO. MOT 87 OF 100	STA. TO STA.	FED. ROAD DIST. NO. ILLINOIS	FED. AID PROJECT	CONTRACT NO. 63398	
	PLOT SCALE = 1:50	CHECKED - JAH	REVISED -								
	PLOT DATE = 7/29/2010	DATE - 8/2/2010	REVISED -								

GA:\MCDOT\28958-00\Drawings\RDW\shets\MOT\49_S_MOT82(A)_Pingree.dgn