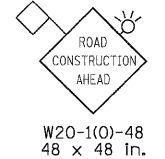
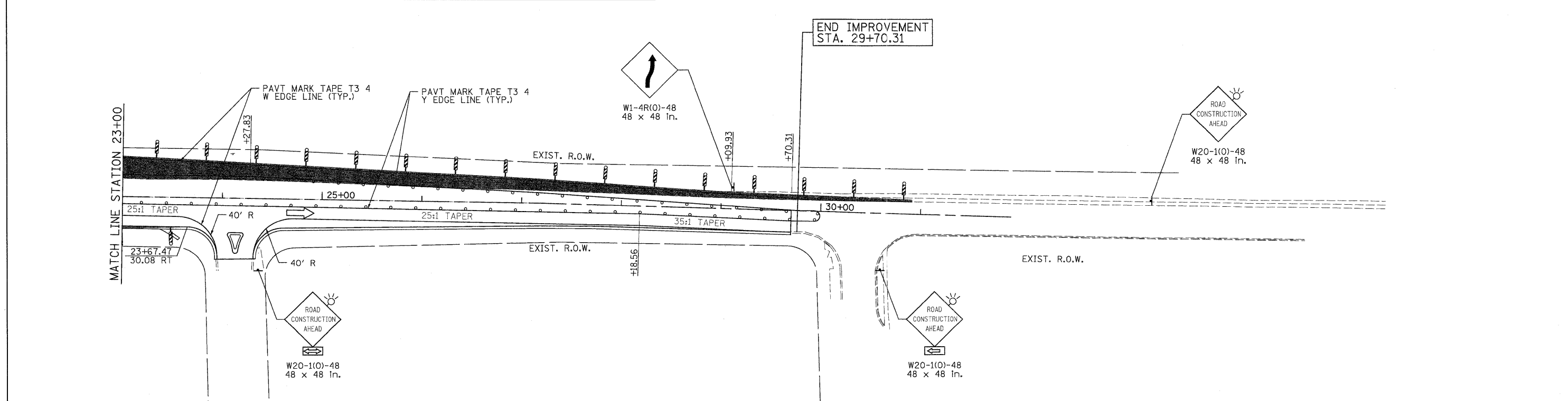


**ADVANCE SIGNING DETAIL:**



**LEGEND**

TEMPORARY PAVEMENT	TYPE II BARRICADES OR DRUMS WITH STEADY BURNING LIGHTS @ 50 FT CENTERS ALONG ROADWAY (TANGENT), 25 FT CENTERS ALONG TAPERS AND 12 FT CENTERS ALONG RADII	VERTICAL PANEL WITH STEADY BURNING LIGHT 50 FT C-C
WORK ZONE	TYPE III BARRICADES WITH FLASHING LIGHTS	
DIRECTION OF TRAFFIC		



<p><b>PATRICK ENGINEERING INC.</b> LISLE, ILLINOIS</p>	USER NAME = Rdwy_Lisle PLOT CONFIG = PDF(Grey_Large).plt PLOT SCALE = 1:50 PLOT DATE = 7/29/2010	DESIGNED - MJV DRAWN - EJB CHECKED - JAH DATE - 8/2/2010	REVISED - REVISED - REVISED - REVISED -	<p><b>MCHENRY COUNTY DIVISION OF TRANSPORTATION</b></p>	<p><b>RAKOW ROAD FROM ACKMAN ROAD TO ILLINOIS ROUTE 31 SUGGESTED STAGING OF CONSTRUCTION &amp; TRAFFIC CONTROL PINGREE ROAD STAGE 2B</b></p>	F.A.P. RTE. 0336 SECTION 05-00308-00-WR COUNTY MCHENRY CONTRACT NO. 63398	TOTAL SHEETS 606 SHEET NO. 134
	SCALE: 1"=50' SHEET NO. MOT 88 OF 100 STA. TO STA.		FED. ROAD DIST. NO. ILLINOIS FED. AID PROJECT				

G:\MCDOT\200950\_2010\Drawings\RDWY\shhs\MOT\50\_S\_MOT82(9)\_Pingree.dgn