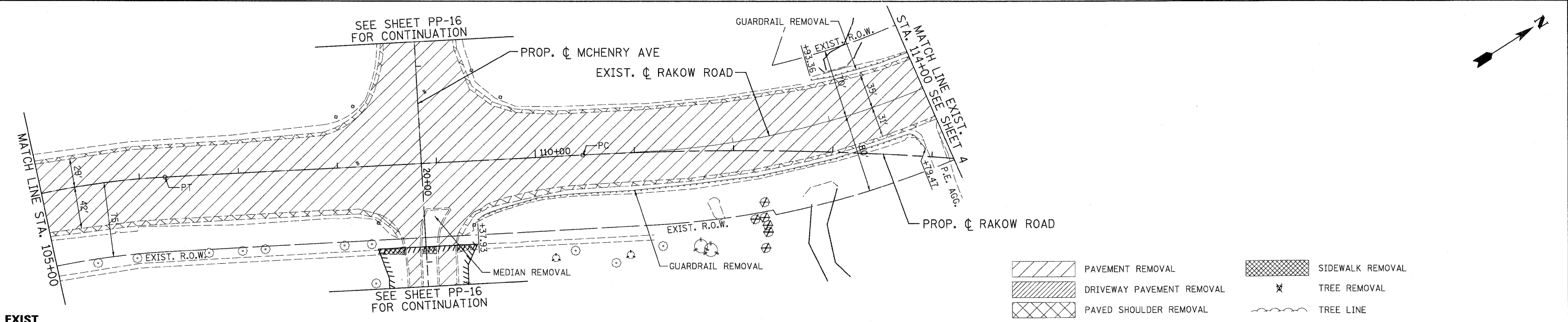
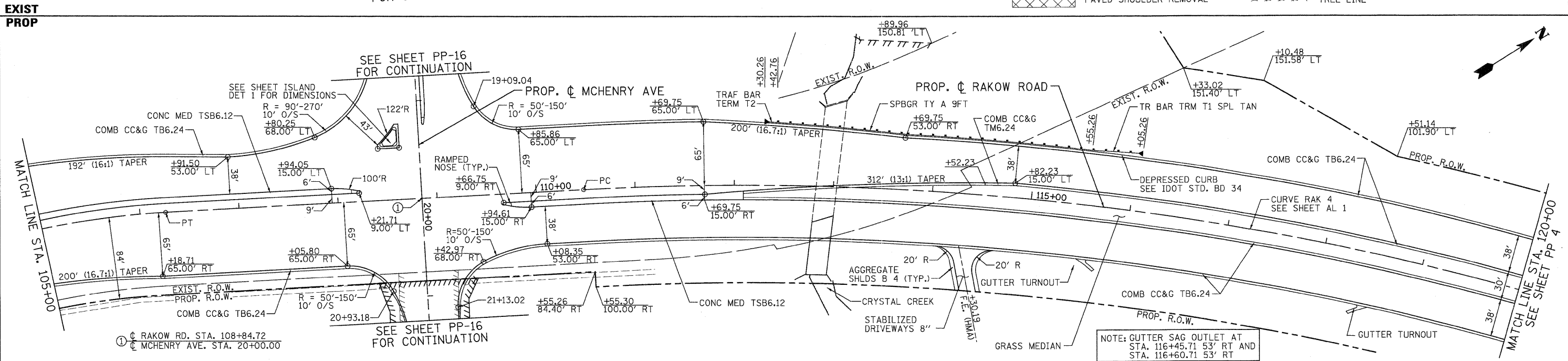


DATE	
BY	
REVISIONS	
NO.	
DATE	
BY	
REVISIONS	
NO.	
DATE	
BY	
REVISIONS	
NO.	

DATE	
BY	
REVISIONS	
NO.	
DATE	
BY	
REVISIONS	
NO.	
DATE	
BY	
REVISIONS	
NO.	



- PAVEMENT REMOVAL
- DRIVEWAY PAVEMENT REMOVAL
- PAVED SHOULDER REMOVAL
- SIDEWALK REMOVAL
- TREE REMOVAL
- TREE LINE



895.32	895.66	EXIST. PROP.	893.28	893.36	890.50	890.43	887.21	887.05	883.59	883.65	879.96	880.33	876.56	877.55	874.50	875.39	873.92	873.86	870.74	872.95	866.96	872.35	870.31	871.77	873.77	871.70	872.03	872.30	872.69	873.10	876.33	873.90
105+00	106+00		107+00	108+00	109+00	110+00	111+00	112+00	113+00	114+00	115+00	116+00	117+00	118+00	119+00	120+00																

PATRICK ENGINEERING INC. LISLE, ILLINOIS	USER NAME = Rdwj.Lt1sl PLOT CONFIG = PDF(Greg.Large).plt PLOT SCALE = 1:50 PLOT DATE = 7/28/2010 10:27:10 PM	DESIGNED - MJP DRAWN - TCK CHECKED - JAH DATE - 8/2/2010	REVISED - REVISED - REVISED - REVISED -	MCHENRY COUNTY DIVISION OF TRANSPORTATION	RAKOW ROAD FROM ACKMAN ROAD TO ILLINOIS ROUTE 31 RAKOW ROAD PROPOSED ROADWAY PLAN AND PROFILE	F.A.P. RTE. 0336 SECTION 05-00308-00-WR COUNTY MCHENRY CONTRACT NO. 63398	TOTAL SHEETS NO. 149 SHEET NO. PP 3 OF 25 STA. 105+00 TO STA. 120+00	FED. ROAD DIST. NO. [ILLINOIS] FED. AID PROJECT
	SCALE: 1"=50' SHEET NO. PP 3 OF 25 STA. 105+00 TO STA. 120+00							

G:\MCDOT\20952_00\ND-rwzngs\RDWY\shhta\rd\N.S.PP.#3.dgn