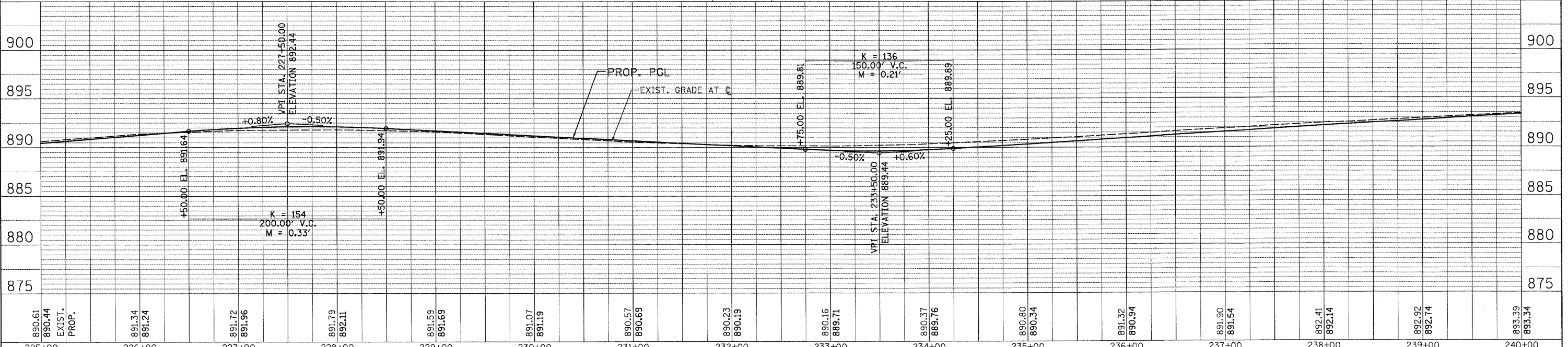
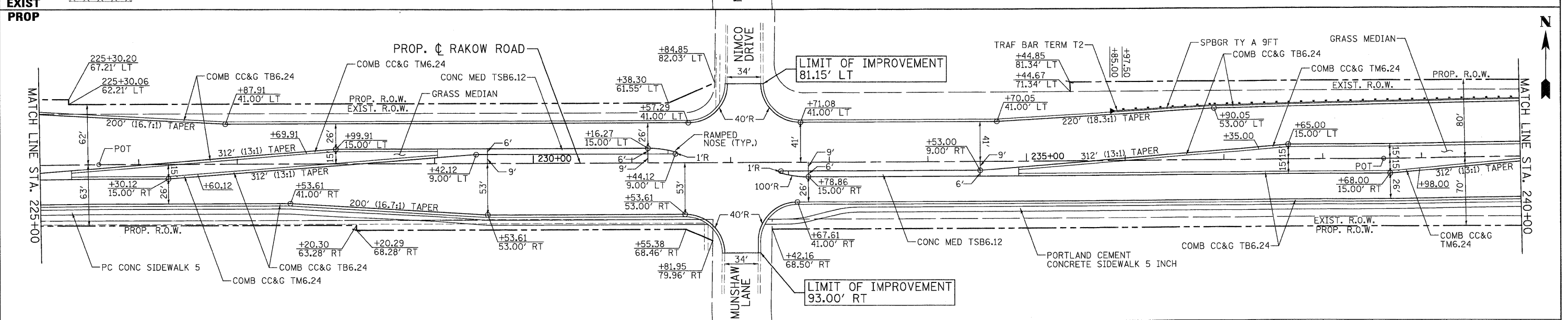
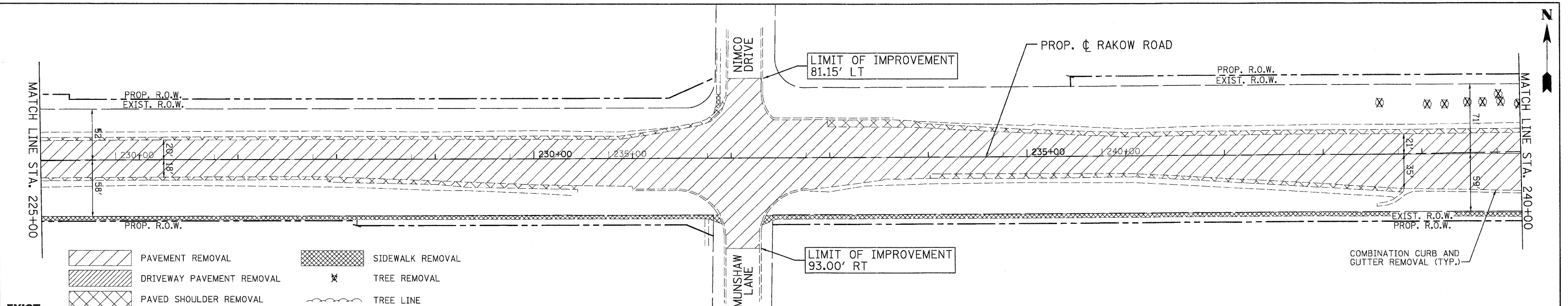


DATE	
BY	
SURVEYED	
NOTED	
PLANNED	
DESIGNED	
CHECKED	
REVISED	

DATE	
BY	
DESIGNED	
CHECKED	
REVISED	



890.61	890.44	891.34	891.72	891.79	891.59	891.07	890.57	890.23	890.16	890.37	890.80	891.32	892.41	892.92	893.39
225+00	226+00	227+00	228+00	229+00	230+00	231+00	232+00	233+00	234+00	235+00	236+00	237+00	238+00	239+00	240+00

USER NAME = Rdwy_Lisle	DESIGNED - MJP	REVISED -
PLOT CONFIG = POFIG(raj.Large).plt	DRAWN - TCK	REVISED -
PLOT SCALE = 1:50	CHECKED - JAH	REVISED -
PLOT DATE = 7/23/2010 12:28:51 PM	DATE - 8/2/2010	REVISED -

891.34	891.72	891.79	891.59	891.07	890.57	890.23	890.16	890.37	890.80	891.32	892.41	892.92	893.39
891.24	891.96	892.11	891.69	891.19	890.69	890.19	890.71	890.76	890.34	890.94	891.54	892.74	893.34

**MCHENRY COUNTY**  
DIVISION OF TRANSPORTATION

**RAKOW ROAD FROM ACKMAN ROAD TO ILLINOIS ROUTE 31**  
**RAKOW ROAD PROPOSED ROADWAY PLAN AND PROFILE**

SCALE: 1"=50'     SHEET NO. PP 12 OF 25     STA. 225+00 TO STA. 240+00

F.A. RTE.	SECTION	COUNTY	TOTAL SHEETS	SHEET NO.
0336	05-00308-00-WR	MCHENRY	606	158
FED. ROAD DIST. NO.		ILLINOIS FED. AID PROJECT		
CONTRACT NO.		63398		

Q:\MDC01\20950\_00\Drawings\RDWY\shw\RAKOW.PP\_12.dgn