

NOTE:
HMA SURF REM 4 LIMIT STA. 6+10.75

BEGIN IMPROVEMENT
STA. 6+81.33

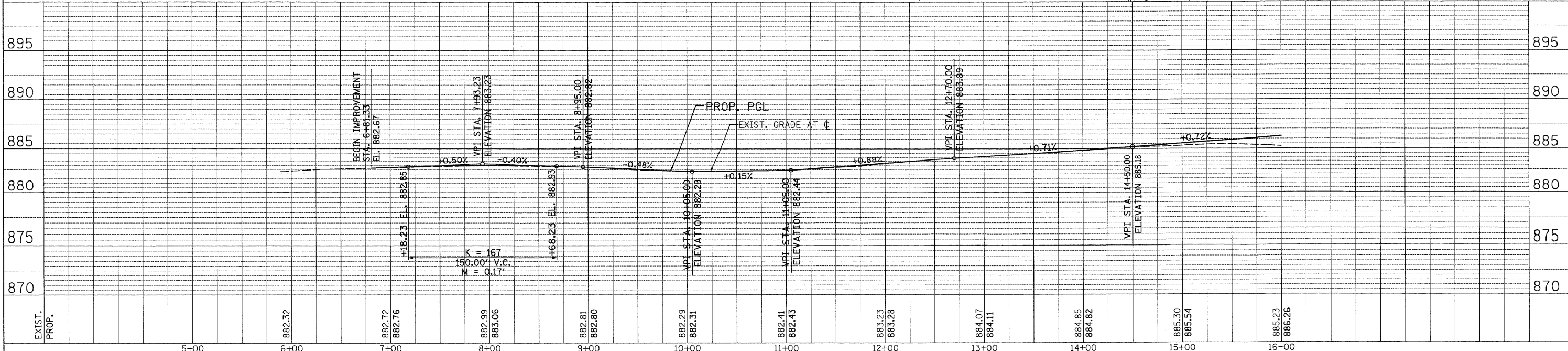
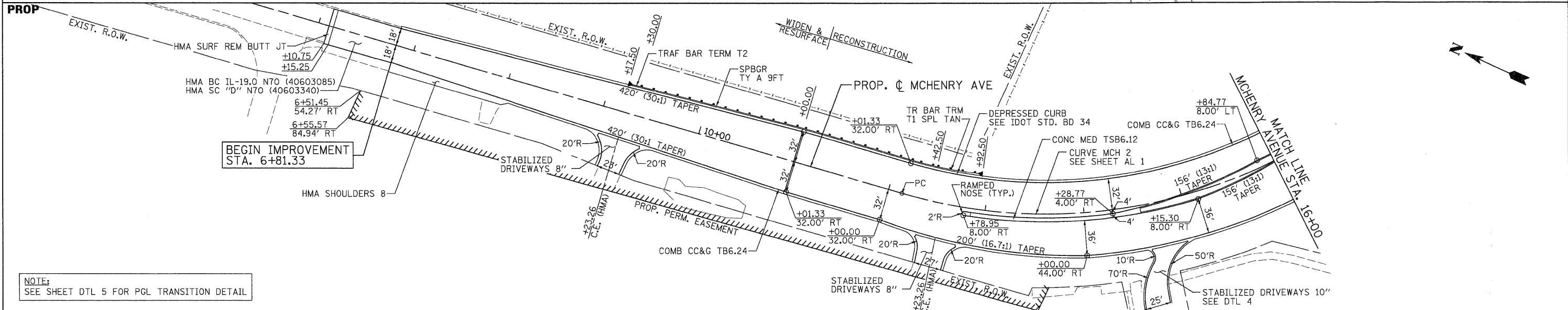
- PAVEMENT REMOVAL
- DRIVEWAY PAVEMENT REMOVAL
- PAVED SHOULDER REMOVAL
- SIDEWALK REMOVAL
- TREE REMOVAL
- TREE LINE

EXIST
PROP

DATE	
BY	
SURVEYED	
PLANNED	
NOTED	
NO.	

DATE	
BY	
SURVEYED	
PLANNED	
NOTED	
NO.	

NOTE:
SEE SHEET DTL 5 FOR PGL TRANSITION DETAIL



USER NAME = Rdwy_L1510
 PLOT CONFIG = PDF(Grey, Large).plt
 PLOT SCALE = 1:50
 PLOT DATE = 7/28/2010 10:29:19 PM

DESIGNED - MJP
 DRAWN - TCK
 CHECKED - JAH
 DATE - 8/2/2010

REVISED -
 REVISED -
 REVISED -
 REVISED -



MCHENRY COUNTY
DIVISION OF TRANSPORTATION

RAKOW ROAD FROM ACKMAN ROAD TO ILLINOIS ROUTE 31
MCHENRY AVENUE ROADWAY PLAN AND PROFILE

SCALE: 1"=50' SHEET NO. PP 15 OF 25 STA. 6+81.33 TO STA. 16+00

F.A. RTE. 0336	SECTION 05-00308-00-WR	COUNTY MCHENRY	TOTAL SHEETS 606	SHEET NO. 161
FED. ROAD DIST. NO. ILLINOIS FED. AID PROJECT			CONTRACT NO. 63398	