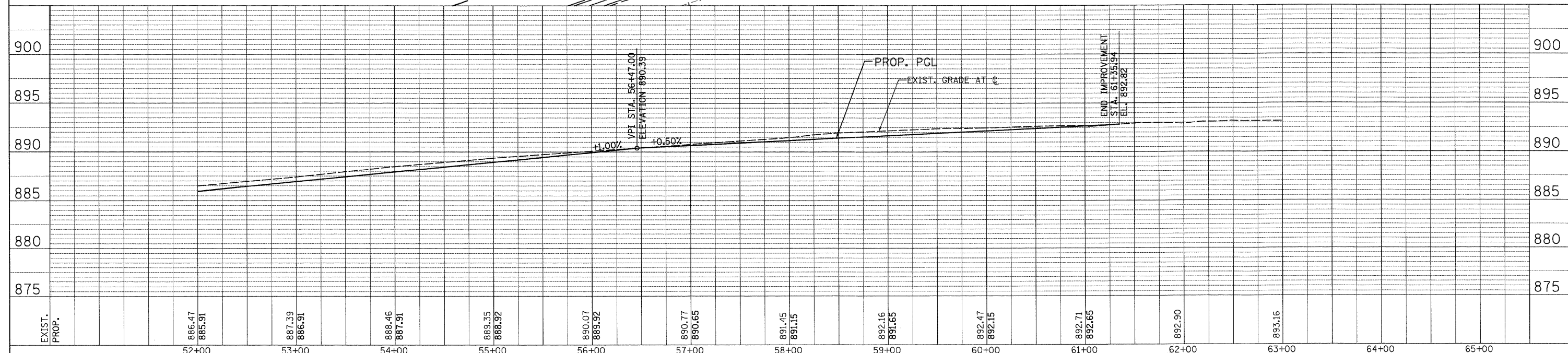
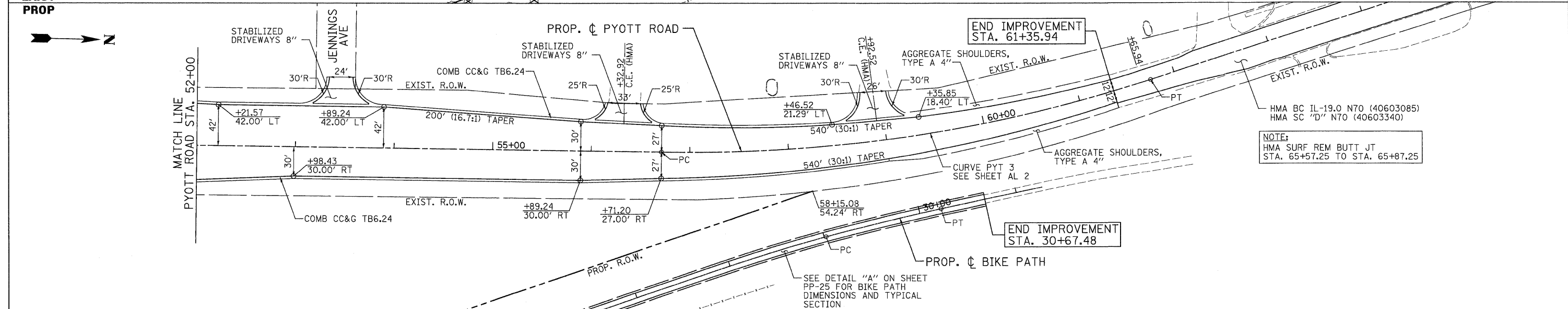
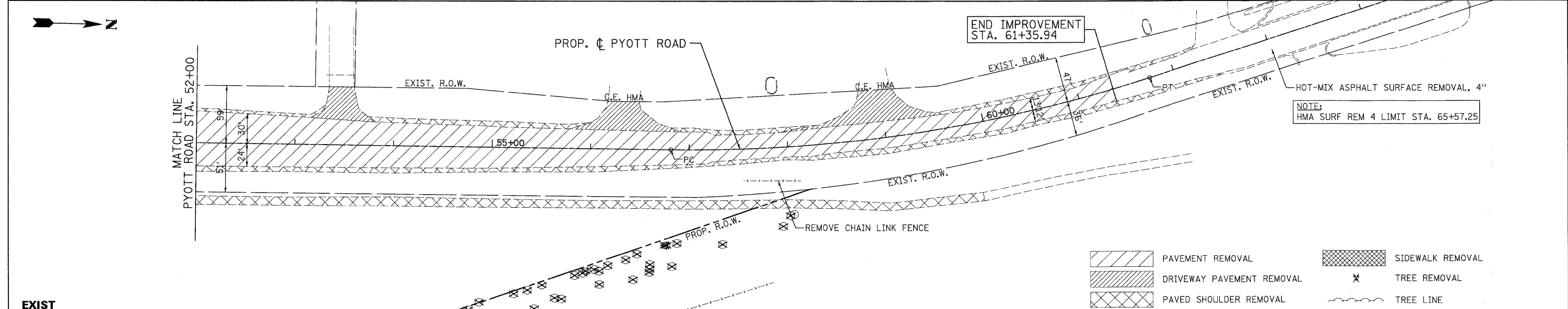


PLAN	SURVEYED	DATE
	PLOTTED	BY
	CHECKED	
	REVISIONS	
	NOTES	
	NO.	

PROFILE	SURVEYED	DATE
	PLOTTED	BY
	CHECKED	
	REVISIONS	
	NOTES	
	NO.	



PATRICK ENGINEERING INC. LISLE, ILLINOIS	USER NAME = Rdwy_Lisle PLOT CONFIG = PDF(Greg_Large).plt PLOT SCALE = 1:50 PLOT DATE = 7/28/2010 10:29:43 PM	DESIGNED - MJP DRAWN - TCK CHECKED - JAH DATE - 8/2/2010	REVISED - REVISED - REVISED - REVISED -	MCHENRY COUNTY DIVISION OF TRANSPORTATION	RAKOW ROAD FROM ACKMAN ROAD TO ILLINOIS ROUTE 31 PYOTT ROAD PROPOSED ROADWAY PLAN AND PROFILE	F.A. RTE. 0336 SECTION 05-00308-00-WR COUNTY MCHENRY CONTRACT NO. 63398	TOTAL SHEETS 606 SHEET NO. 164
	SCALE: 1"=50' SHEET NO. PP 18 OF 25 STA. 52+00 TO STA. 61+35.94		FED. ROAD DIST. NO. ILLINOIS FED. AID PROJECT				

G:\MCDOT\22952.00\IND-rwings\RDWY\shsa\rd\18_PP_18_Pyott.dgn