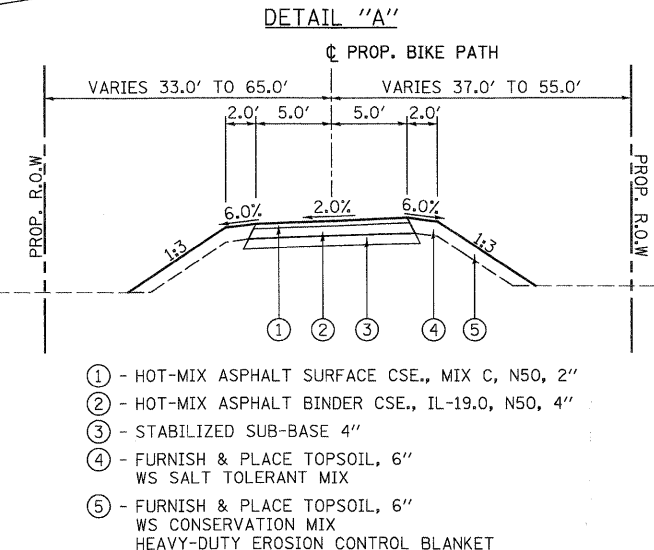
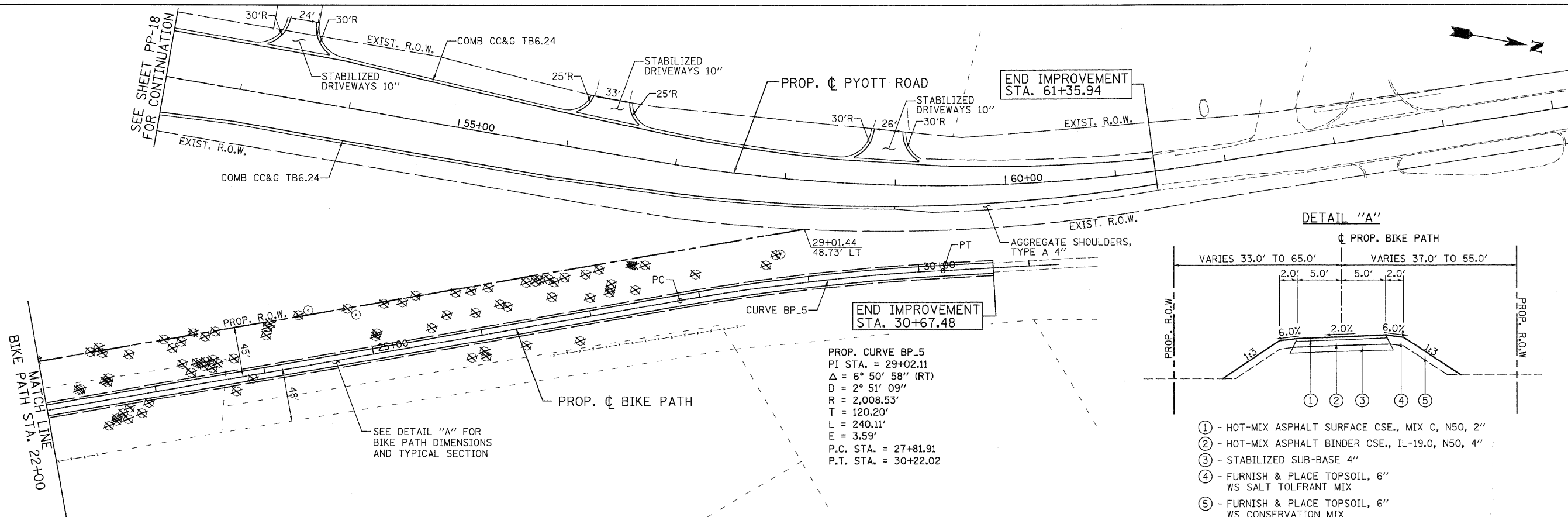


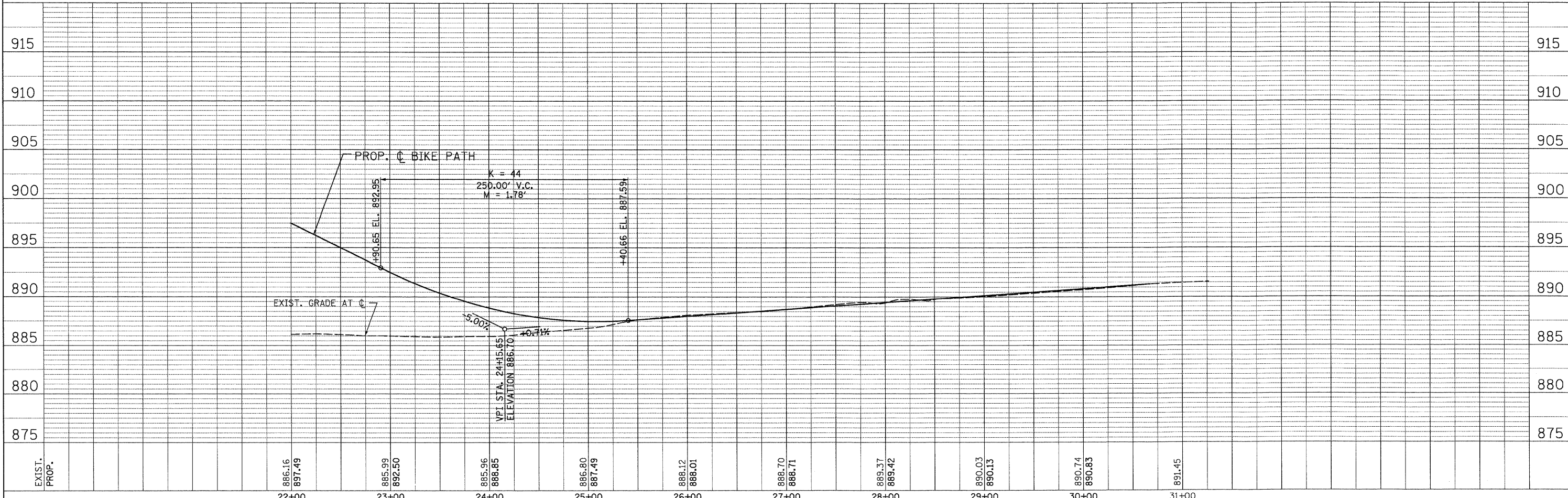
PLAN	SURVEYED	DATE
	PLOTTED	BY
	GRADES CHECKED	
	STRUCTURE NOTATIONS CHECKED	
	NOTE BOOK	
	NO.	

PROFILE	SURVEYED	DATE
	PLOTTED	BY
	GRADES CHECKED	
	STRUCTURE NOTATIONS CHECKED	
	NOTE BOOK	
	NO.	



PROP. CURVE BP.5
 PI STA. = 29+02.11
 $\Delta = 6^\circ 50' 58''$ (RT)
 $D = 2^\circ 51' 09''$
 $R = 2,008.53'$
 $T = 120.20'$
 $L = 240.11'$
 $E = 3.59'$
 P.C. STA. = 27+81.91
 P.T. STA. = 30+22.02

- ① - HOT-MIX ASPHALT SURFACE CSE., MIX C, N50, 2"
- ② - HOT-MIX ASPHALT BINDER CSE., IL-19.0, N50, 4"
- ③ - STABILIZED SUB-BASE 4"
- ④ - FURNISH & PLACE TOPSOIL, 6"
WS SALT TOLERANT MIX
- ⑤ - FURNISH & PLACE TOPSOIL, 6"
WS CONSERVATION MIX
HEAVY-DUTY EROSION CONTROL BLANKET



	USER NAME = Rdky_Lisle	DESIGNED - MJP	REVISED -		RAKOW ROAD FROM ACKMAN ROAD TO ILLINOIS ROUTE 31 BIKE PATH PROPOSED ROADWAY PLAN AND PROFILE	F.A.P. RTE. 0336	SECTION 05-00308-00-WR	COUNTY MCHENRY	TOTAL SHEETS 606	SHEET NO. 171
	PLOT CONFIG = PDF(Grey, Large).plt	DRAWN - TCK	REVISED -			CONTRACT NO. 63398				
PLOT SCALE = 1:50	CHECKED - JAH	REVISED -	SCALE: 1"=50'	SHEET NO. PP 25 OF 25	STA. TO STA.	FED. ROAD DIST. NO.	ILLINOIS FED. AID PROJECT			
PLOT DATE = 7/28/2010 10:30:32 PM	DATE - 8/2/2010	REVISED -								

G:\MCDOT\20950_00\10-drawings\RDWY\shsa\rd\AS_PP_25_(BikePath).dgn