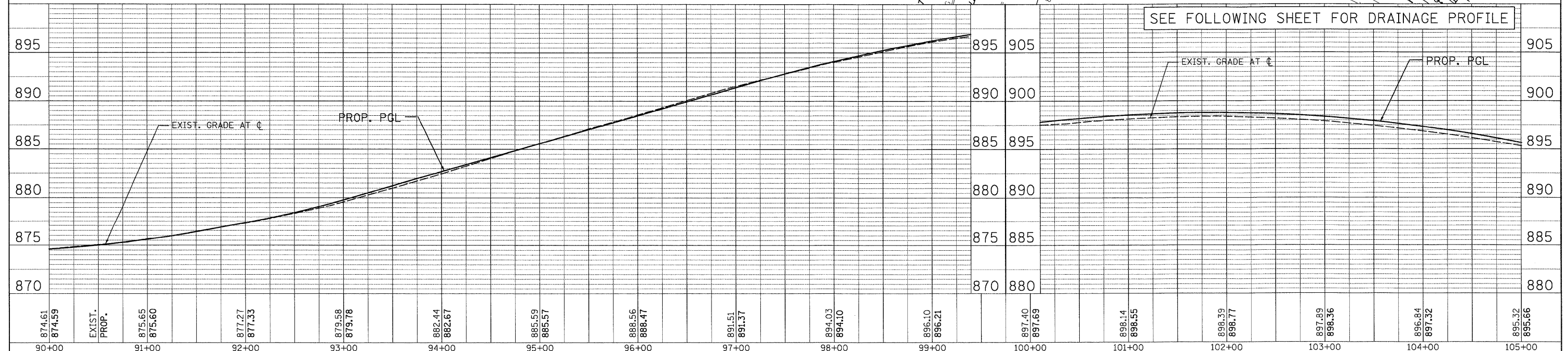
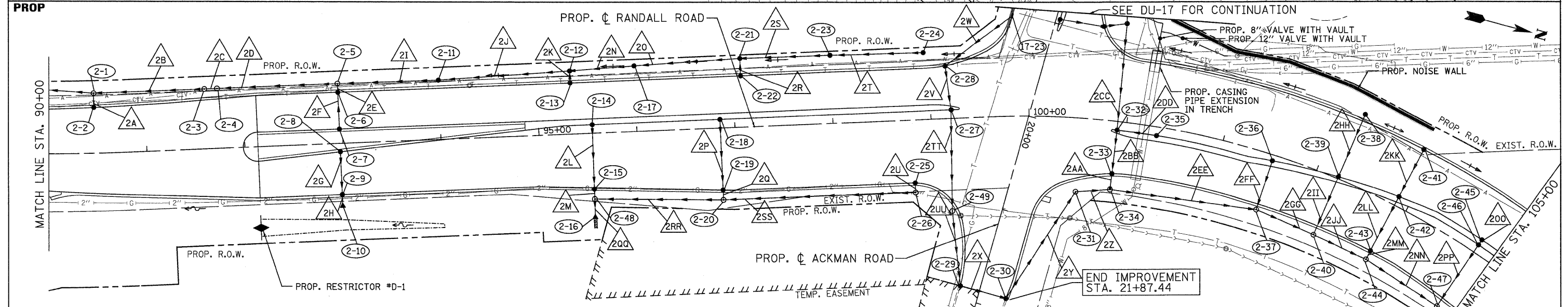
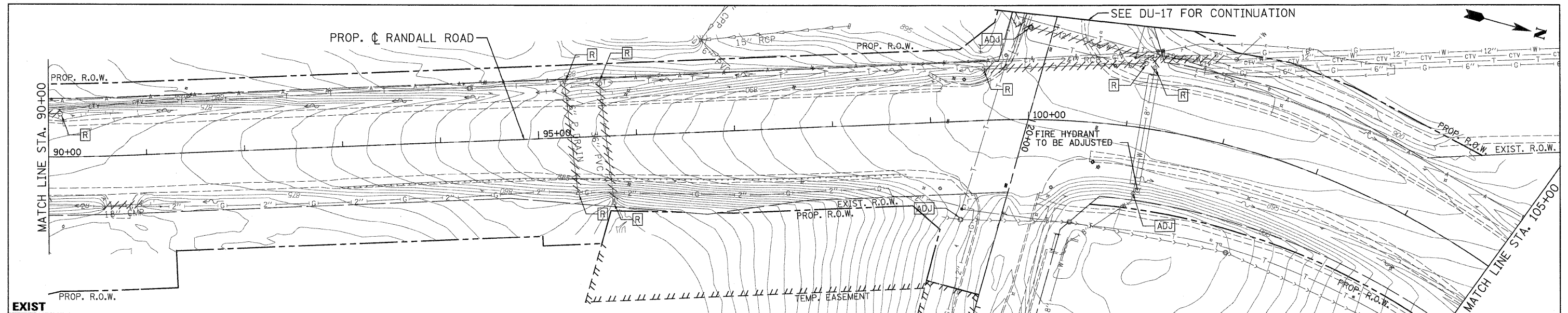


DATE	
BY	
PLAN	
NO.	
DATE	
BY	
PLAN	
NO.	

DATE	
BY	
PROFILE	
NO.	
DATE	
BY	
PROFILE	
NO.	



874.61 874.59	EXIST. PROP.	875.65 875.60	877.27 877.33	879.58 879.78	882.44 882.67	885.59 885.57	888.56 888.47	891.51 891.37	894.03 894.10	896.10 896.21	897.40 897.69	898.14 898.55	898.39 898.77	897.89 898.36	896.84 897.32	895.32 895.66
90+00		91+00	92+00	93+00	94+00	95+00	96+00	97+00	98+00	99+00	100+00	101+00	102+00	103+00	104+00	105+00

PATRICK ENGINEERING INC. LISLE, ILLINOIS	USER NAME = jmacke(chicago_r) PLOT CONFIG = PDF(Grey, Large).plt PLOT SCALE = 1:50 PLOT DATE = 7/29/2010 8:58:31 AM	DESIGNED - D. DOERFLER DRAWN - J. MACKE CHECKED - E. CHOW DATE - 6/29/10	REVISED - REVISED - REVISED - REVISED -	MCHENRY COUNTY DIVISION OF TRANSPORTATION	DRAINAGE AND UTILITIES RAKOW ROAD FROM ACKMAN ROAD TO ILLINOIS ROUTE 31		F.A. RTE. 0336 SECTION 05-00308-00-WR COUNTY MCHENRY TOTAL SHEETS 606 SHEET NO. 185
	SCALE: 1"=50' SHEET NO. DU 2 OF 47 90+00.00 105+00.00 FED. ROAD DIST. NO. ILLINOIS FED. AID PROJECT						

p:\chicago\modot\22950_001\drawings\rdwy\shfts\dra\02.S_Dra_PP.dgn