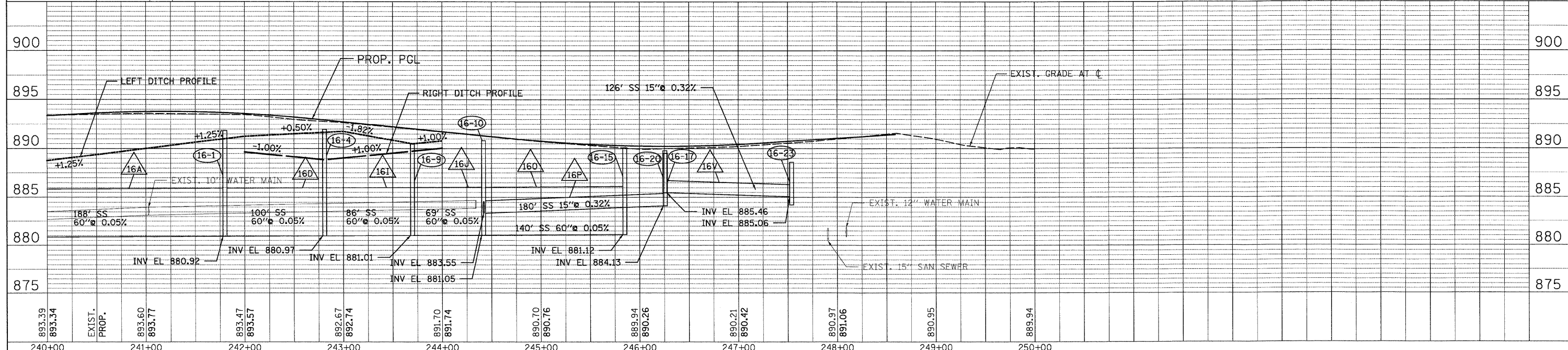
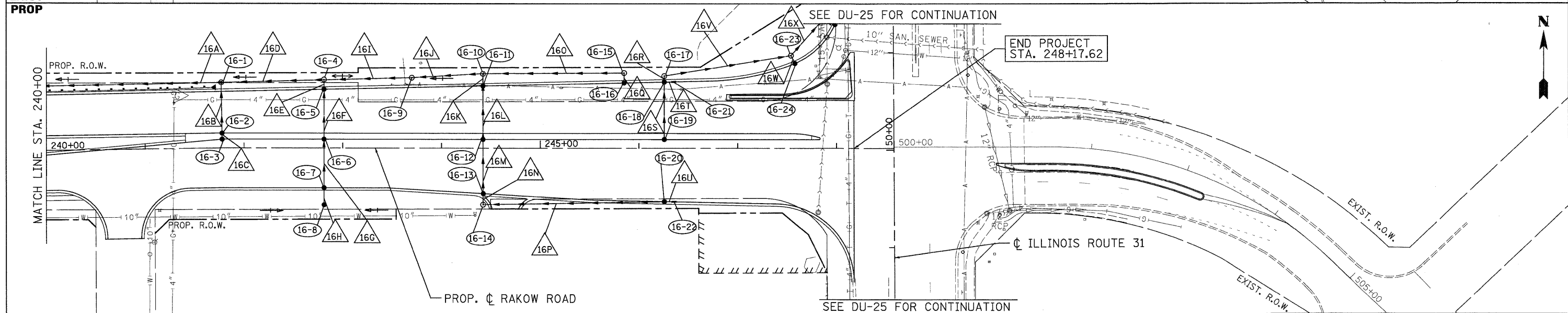
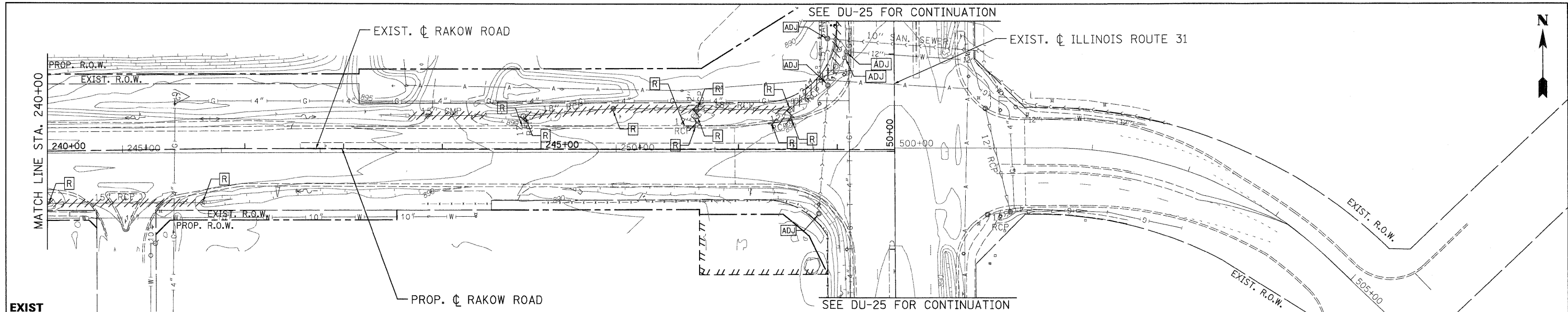


DATE	
BY	
SURVEYED	
PLOTTED	
NOTE BOOK	
NO.	
NO. OF MAY CHECKED	
CADD FILE NAME	

DATE	
BY	
SURVEYED	
PLOTTED	
NOTE BOOK	
NO.	
NO. OF MAY CHECKED	
CADD FILE NAME	



893.39	893.34	EXIST. PROP.	893.60	893.77	893.47	893.57	892.67	892.74	891.70	891.74	890.70	890.76	889.94	890.26	890.21	890.42	890.97	891.06	890.95	889.94
240+00	241+00		242+00	243+00	244+00	245+00	246+00	247+00	248+00	249+00	250+00									



USER NAME = jmaack@chicago.ri  
 PLOT CONFIG = PDF(Greg\_Large).plt  
 PLOT SCALE = 1:50  
 PLOT DATE = 7/29/2010 8:52:20 AM

DESIGNED - D. DOERFLER  
 DRAWN - J. SCHROEDER  
 CHECKED - E. CHOW  
 DATE - 8/2/2010



MCHENRY COUNTY  
 DIVISION OF TRANSPORTATION

RAKOW ROAD FROM ACKMAN ROAD TO ILLINOIS ROUTE 31  
 DRAINAGE AND UTILITIES PLAN AND PROFILE

F.A. RTE.	SECTION	COUNTY	TOTAL SHEETS	SHEET NO.
0336	05-00308-00-WR	MCHENRY	606	199
FED. ROAD DIST. NO.	ILLINOIS FED. AID PROJECT			
	CONTRACT NO. 63398			

SCALE: 1"=50' SHEET NO. DU 16 OF 47 STA. 240+00 TO STA. 248+17.62

pr:\chicago\modot\20950.00\Drawings\rd\du\sh\ra\ra\16\_S.D-r\_PP.dgn