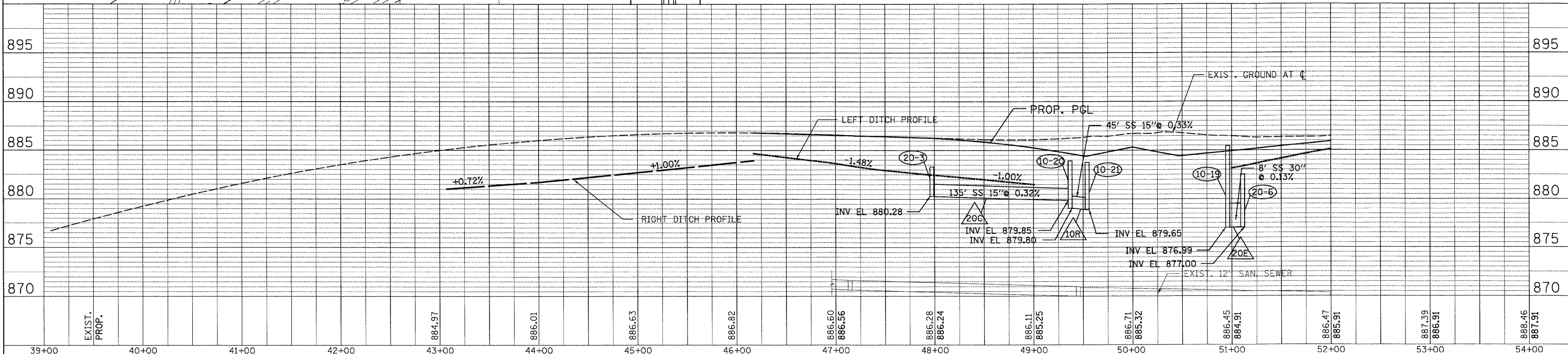
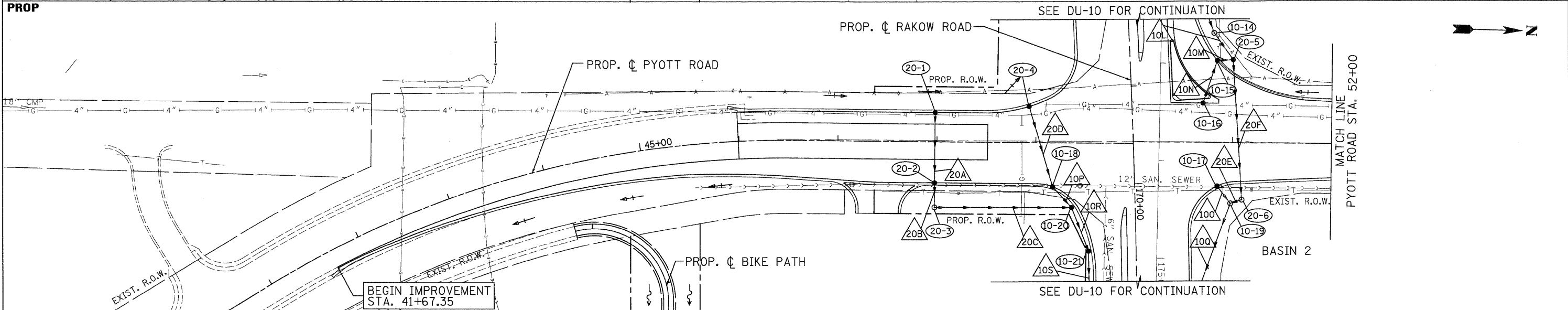
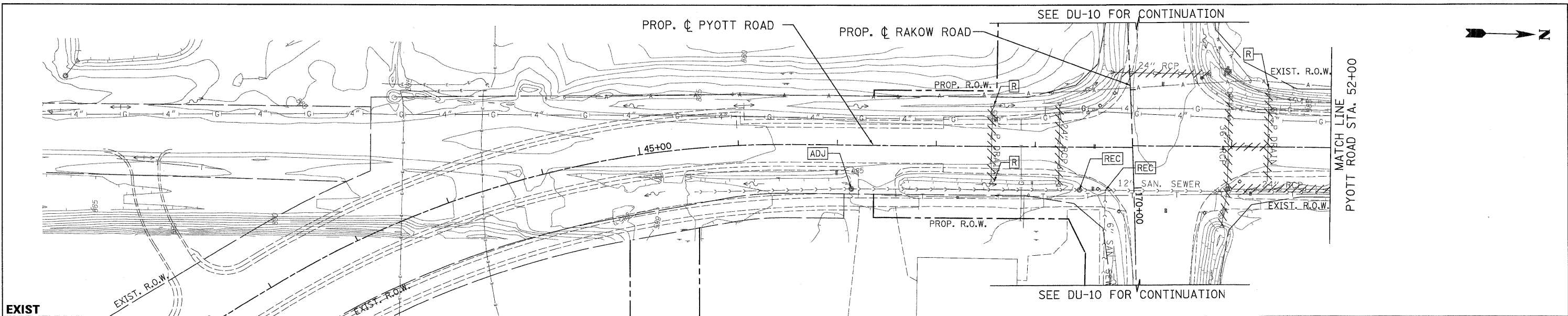


PLAN	SURVEYED	DATE
	PLOTTED	
	GRADES CHECKED	
	STRUCTURE NOTATIONS CHKD	
	NOTE BOOK	
	NO.	

PROFILE	SURVEYED	DATE
	PLOTTED	
	GRADES CHECKED	
	STRUCTURE NOTATIONS CHKD	
	NOTE BOOK	
	NO.	



39+00	40+00	41+00	42+00	43+00	44+00	45+00	46+00	47+00	48+00	49+00	50+00	51+00	52+00	53+00	54+00
EXIST. PROP.				884.97	886.01	886.63	886.82	886.60 886.56	886.28 886.24	886.11 885.25	886.71 885.32	886.45 884.91	886.47 885.91	887.39 886.91	886.46 887.91

<b>PATRICK ENGINEERING INC.</b> LISLE, ILLINOIS	USER NAME = jmacke(Chicago_R) PLOT CONFIG = PDF(Grey, Large).plt PLOT SCALE = 1:50 PLOT DATE = 7/29/2010 8:52:47 AM	DESIGNED - D. DOERFLER DRAWN - J. MACKE CHECKED - E. CHOW DATE - 8/2/2010	REVISED - REVISED - REVISED - REVISED -	<b>MCHENRY COUNTY DIVISION OF TRANSPORTATION</b>	<b>RAKOW ROAD FROM ACKMAN ROAD TO ILLINOIS ROUTE 31 DRAINAGE AND UTILITIES</b>	F.A. RTE. 0336 SECTION 05-00308-00-WR COUNTY MCHENRY CONTRACT NO. 63398	TOTAL SHEET NO. 203 SHEETS 606
	SCALE: 1"=50' SHEET NO. DU 20 OF 47 STA. 40+60.09 TO STA. 52+00	FED. ROAD DIST. NO. ILLINOIS FED. AID PROJECT					

p:\chicago\modot\20950.001\drawings\rdw\shs\dra\20\_S\_Dra\_PP\_10gtd.dgn