
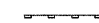



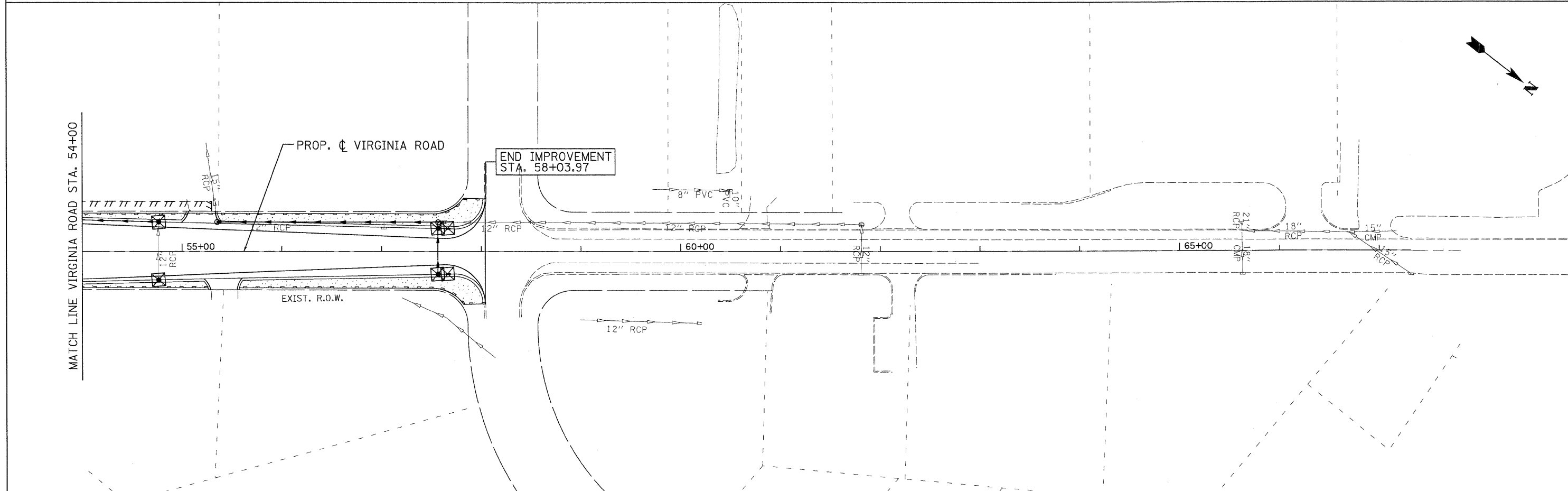




- LEGEND:**
-  TEMPORARY EROSION CONTROL SEEDING W/HEAVY DUTY EROSION CONTROL BLANKET
  -  PERIMETER EROSION BARRIER
  -  INLET FILTERS
  -  TEMPORARY DITCH CHECK
  -  INLET AND PIPE PROTECTION



 <b>PATRICK ENGINEERING INC.</b> Lisle, Illinois	USER NAME = jmaacke(Chicago_R) PLOT CONFIG = PDF(Gray_Large).plt PLOT SCALE = 1:50 PLOT DATE = 7/29/2010	DESIGNED - D. DOERFLER DRAWN - D. DOERFLER CHECKED - E. CHOW DATE - 8/2/2010	REVISED - REVISED - REVISED - REVISED -	 <b>MCHENRY COUNTY</b> DIVISION OF TRANSPORTATION	<b>RAKOW ROAD FROM ACKMAN ROAD TO ILLINOIS ROUTE 31</b> <b>VIRGINIA ROAD EROSION AND SEDIMENT CONTROL</b>	F.A.P. RTE. = 0336 SECTION = 05-00308-00-WR COUNTY = MCHENRY TOTAL SHEETS = 606 SHEET NO. = 299 CONTRACT NO. = 63398
	SCALE: 1"=50' SHEET NO. ERO 11 OF 19 STA. 39+99.75 TO STA. 58+03.97	FED. ROAD DIST. NO. = ILLINOIS FED. AID PROJECT				

p:\chicago\ncdot\20950\_021\drawings\rdwy\shite\eros\11\_S.Eros\_Virginia.dgn