

THE FOLLOWING EXISTING TRAFFIC SIGNAL EQUIPMENT SHALL BE REMOVED BY THE CONTRACTOR, SHALL REMAIN THE PROPERTY OF THE AGENCY LISTED BELOW. THE CONTRACTOR SHALL SAFELY STORE AND ARRANGE FOR PICK UP OR DELIVERY OF ALL EQUIPMENT TO BE RETURNED TO THE LISTED AGENCY AS PER THE TRAFFIC SIGNAL SPECIFICATIONS.

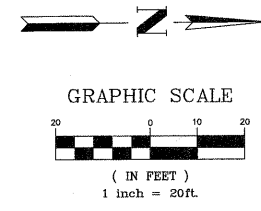
AGENCY: MCHENRY COUNTY DIVISION OF TRANSPORTATION
1 EACH CABINET AND CONTROLLER (COMPLETE)

AGENCY: CITY OF CRYSTAL LAKE
2 EACH LIGHT DETECTOR
2 EACH LIGHT DETECTOR AMPLIFIER

THE FOLLOWING ITEMS SHALL BE REMOVED BY THE CONTRACTOR AND SHALL BE DISPOSED OF BY THEM OUTSIDE THE RIGHT-OF-WAY AT THEIR EXPENSE. THE SALVAGE VALUE OF THE REMOVED EQUIPMENT SHALL BE REFLECTED IN THE CONTRACT BID PRICE.

4 EACH SIGNAL HEAD, 3-SECTION
12 EACH SIGNAL HEAD, 5-SECTION
4 EACH STEEL MAST ARM ASSEMBLY AND POLE
4 EACH TRAFFIC SIGNAL POST
1 EACH SERVICE INSTALLATION

MATCH LINE STA. 22+00
SEE SHEET 2



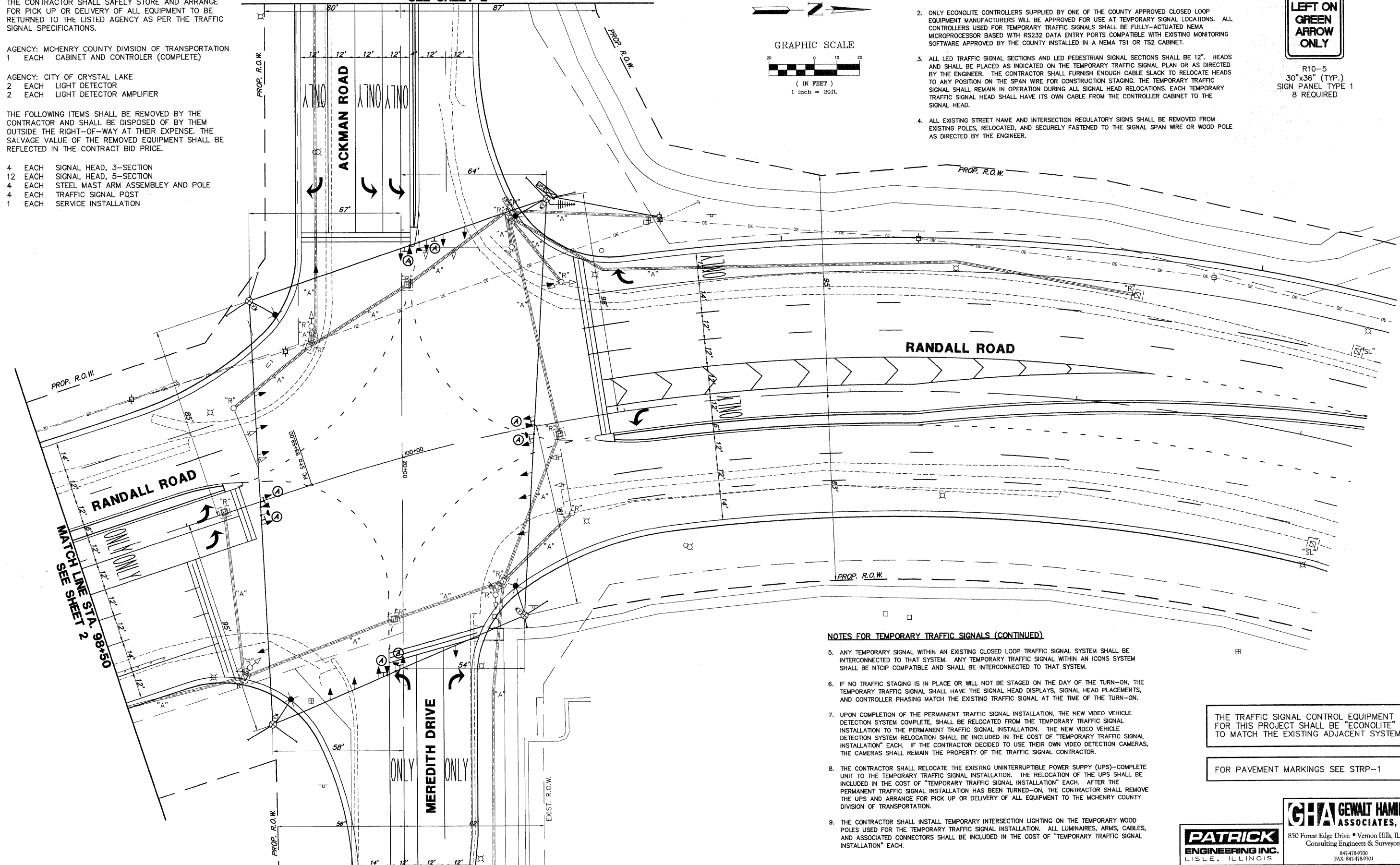
NOTES FOR TEMPORARY TRAFFIC SIGNALS

1. ALL CONTROL EQUIPMENT INCLUDING EMERGENCY PRE-EMPTION AND COMMUNICATION DEVICES FOR THE TEMPORARY TRAFFIC SIGNAL(S) SHALL BE FURNISHED BY THE CONTRACTOR.
2. ONLY ECONOLITE CONTROLLERS SUPPLIED BY ONE OF THE COUNTY APPROVED CLOSED LOOP EQUIPMENT MANUFACTURERS WILL BE APPROVED FOR USE AT TEMPORARY SIGNAL LOCATIONS. ALL CONTROLLERS USED FOR TEMPORARY TRAFFIC SIGNALS SHALL BE FULLY-ACTUATED NEMA MICROPROCESSOR BASED WITH RS232 DATA ENTRY PORTS COMPATIBLE WITH EXISTING MONITORING SOFTWARE APPROVED BY THE COUNTY INSTALLED IN A NEMA TS1 OR TS2 CABINET.
3. ALL LED TRAFFIC SIGNAL SECTIONS AND LED PEDESTRIAN SIGNAL SECTIONS SHALL BE 12". HEADS AND SHALL BE PLACED AS INDICATED ON THE TEMPORARY TRAFFIC SIGNAL PLAN OR AS DIRECTED BY THE ENGINEER. THE CONTRACTOR SHALL FURNISH ENOUGH CABLE SLACK TO RELOCATE HEADS TO ANY POSITION ON THE SPAN WIRE FOR CONSTRUCTION STAGING. THE TEMPORARY TRAFFIC SIGNAL SHALL REMAIN IN OPERATION DURING ALL SIGNAL HEAD RELOCATIONS. EACH TEMPORARY TRAFFIC SIGNAL HEAD SHALL HAVE ITS OWN CABLE FROM THE CONTROLLER CABINET TO THE SIGNAL HEAD.
4. ALL EXISTING STREET NAME AND INTERSECTION REGULATORY SIGNS SHALL BE REMOVED FROM EXISTING POLES, RELOCATED, AND SECURELY FASTENED TO THE SIGNAL SPAN WIRE OR WOOD POLE AS DIRECTED BY THE ENGINEER.

SIGN A



R10-5
30"x36" (TYP.)
SIGN PANEL TYPE 1
8 REQUIRED



NOTES FOR TEMPORARY TRAFFIC SIGNALS (CONTINUED)

5. ANY TEMPORARY SIGNAL WITHIN AN EXISTING CLOSED LOOP TRAFFIC SIGNAL SYSTEM SHALL BE INTERCONNECTED TO THAT SYSTEM. ANY TEMPORARY TRAFFIC SIGNAL WITHIN AN ICONS SYSTEM SHALL BE NTCP COMPATIBLE AND SHALL BE INTERCONNECTED TO THAT SYSTEM.
6. IF NO TRAFFIC STAGING IS IN PLACE OR WILL NOT BE STAGED ON THE DAY OF THE TURN-ON, THE TEMPORARY TRAFFIC SIGNAL SHALL HAVE THE SIGNAL HEAD DISPLAYS, SIGNAL HEAD PLACEMENTS, AND CONTROLLER PHASING MATCH THE EXISTING TRAFFIC SIGNAL AT THE TIME OF THE TURN-ON.
7. UPON COMPLETION OF THE PERMANENT TRAFFIC SIGNAL INSTALLATION, THE NEW VIDEO VEHICLE DETECTION SYSTEM COMPLETE, SHALL BE RELOCATED FROM THE TEMPORARY TRAFFIC SIGNAL INSTALLATION TO THE PERMANENT TRAFFIC SIGNAL INSTALLATION. THE NEW VIDEO VEHICLE DETECTION SYSTEM RELOCATION SHALL BE INCLUDED IN THE COST OF "TEMPORARY TRAFFIC SIGNAL INSTALLATION" EACH. IF THE CONTRACTOR DECIDED TO USE THEIR OWN VIDEO DETECTION CAMERAS, THE CAMERAS SHALL REMAIN THE PROPERTY OF THE TRAFFIC SIGNAL CONTRACTOR.
8. THE CONTRACTOR SHALL RELOCATE THE EXISTING UNINTERRUPTIBLE POWER SUPPLY (UPS)-COMPLETE UNIT TO THE TEMPORARY TRAFFIC SIGNAL INSTALLATION. THE RELOCATION OF THE UPS SHALL BE INCLUDED IN THE COST OF "TEMPORARY TRAFFIC SIGNAL INSTALLATION" EACH. AFTER THE PERMANENT TRAFFIC SIGNAL INSTALLATION HAS BEEN TURNED-ON, THE CONTRACTOR SHALL REMOVE THE UPS AND ARRANGE FOR PICK UP OR DELIVERY OF ALL EQUIPMENT TO THE MCHENRY COUNTY DIVISION OF TRANSPORTATION.
9. THE CONTRACTOR SHALL INSTALL TEMPORARY INTERSECTION LIGHTING ON THE TEMPORARY WOOD POLES USED FOR THE TEMPORARY TRAFFIC SIGNAL INSTALLATION. ALL LUMINAIRES, ARMS, CABLES, AND ASSOCIATED CONNECTORS SHALL BE INCLUDED IN THE COST OF "TEMPORARY TRAFFIC SIGNAL INSTALLATION" EACH.

THE TRAFFIC SIGNAL CONTROL EQUIPMENT FOR THIS PROJECT SHALL BE "ECONOLITE" TO MATCH THE EXISTING ADJACENT SYSTEM.

FOR PAVEMENT MARKINGS SEE STRP-1

FILE NAME = 4153.800-tr1.dwg
USER NAME = GHA

DESIGNED - DPB
DRAWN - ZCW
CHECKED - DPB
DATE - 8/2/10

REVISIONS
REVISIONS
REVISIONS
REVISIONS



MCHENRY COUNTY
DIVISION OF TRANSPORTATION

TEMPORARY TRAFFIC SIGNAL INSTALLATION AND REMOVE EXISTING TRAFFIC SIGNAL EQUIPMENT RANDALL ROAD AND ACKMAN ROAD/MEREDITH DRIVE
SCALE: 1"=20' SIGNAL SHEET #1 OF 65 SHEETS STA. TO STA.

F.A.P. RTE. 0336	SECTION 05-00308-WR	COUNTY McHENRY	TOTAL SHEETS 606	SHEET NO. 310
CONTRACT # 63398			ILLINOIS FED. AID PROJECT	

PATRICK ENGINEERING INC.
LISLE, ILLINOIS

GHA GEWALT HAMILTON ASSOCIATES, INC.
850 Forest Edge Drive • Vernon Hills, IL 60061
Consulting Engineers & Surveyors
847.478.9700
FAX: 847.478.9701