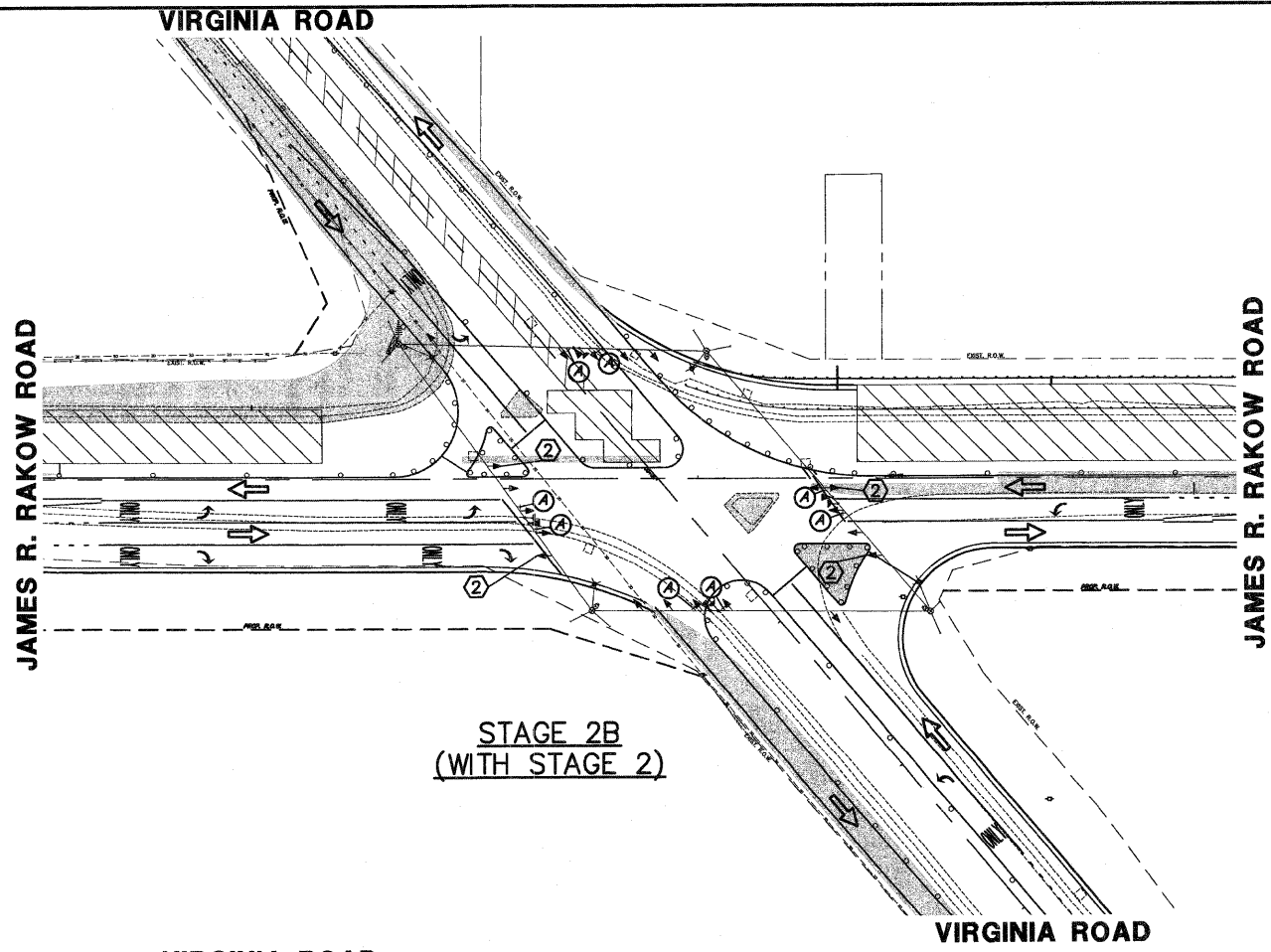
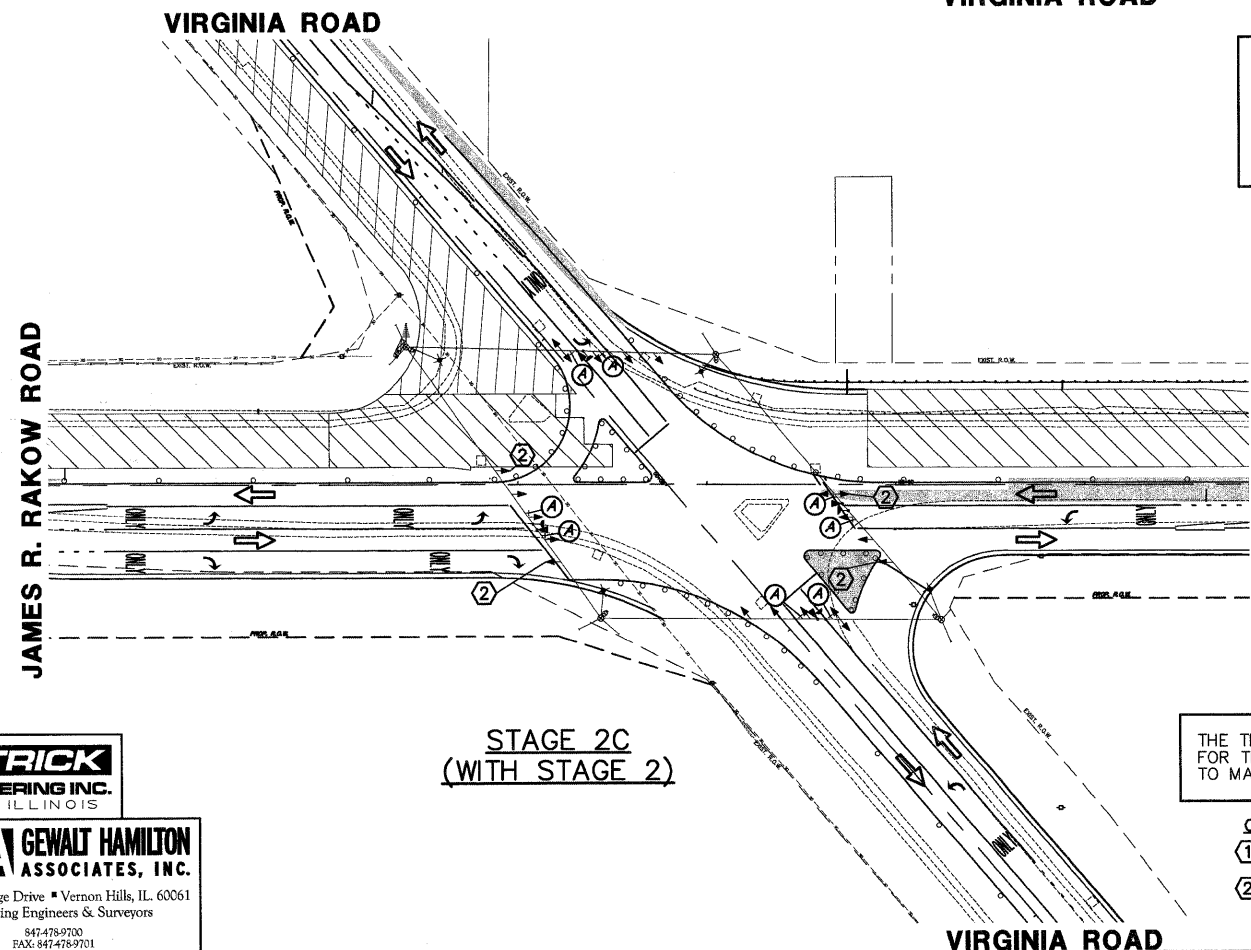


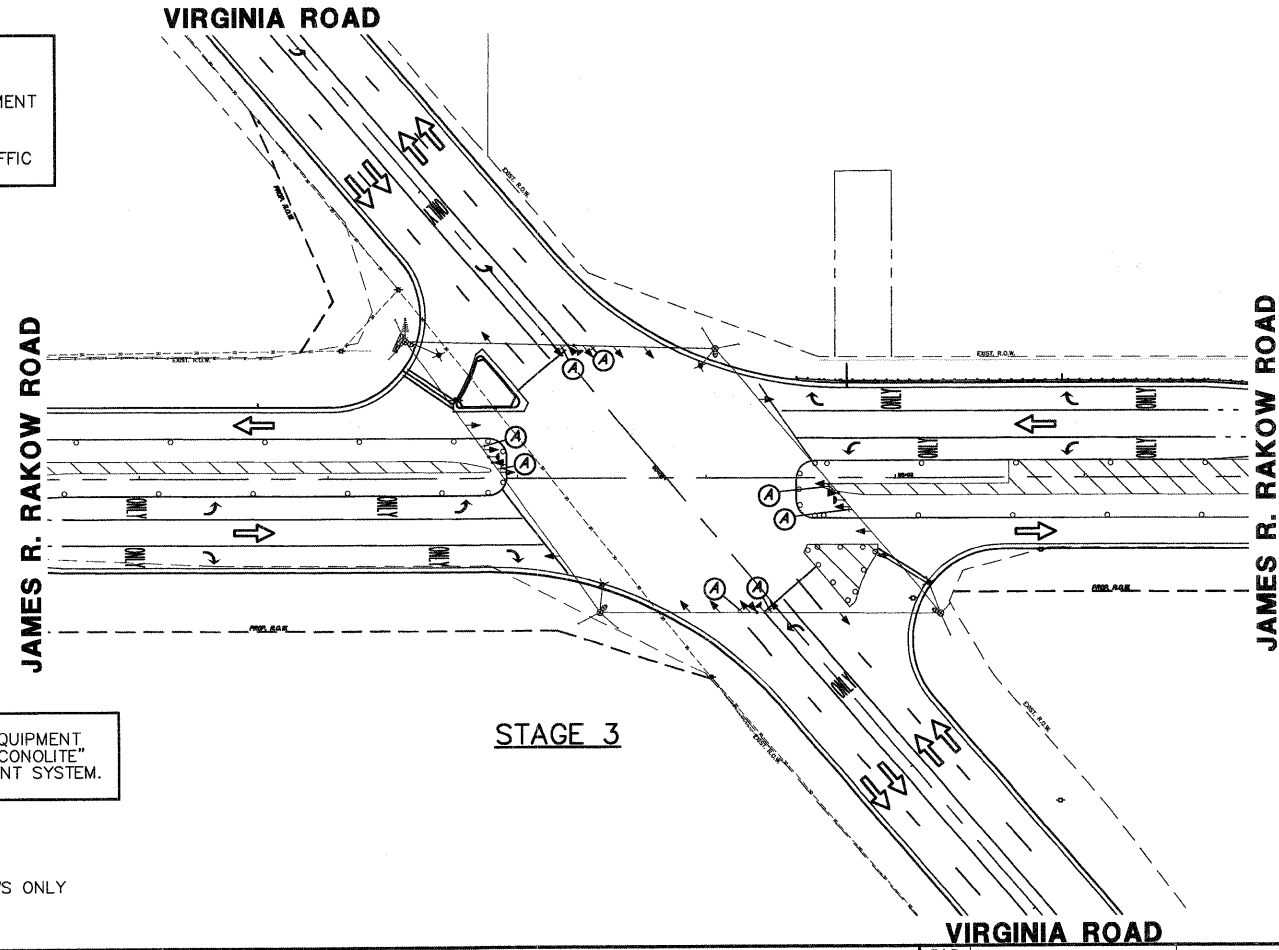
STAGE 2A  
(WITH STAGE 2)



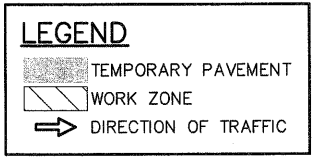
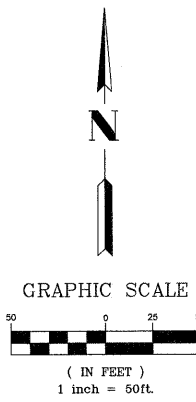
STAGE 2B  
(WITH STAGE 2)



STAGE 2C  
(WITH STAGE 2)



STAGE 3



THE TRAFFIC SIGNAL CONTROL EQUIPMENT FOR THIS PROJECT SHALL BE "ECONOLITE" TO MATCH THE EXISTING ADJACENT SYSTEM.

- CONSTRUCTION NOTES:**
- ① BAG ENTIRE HEAD
  - ② BAG RIGHT TURN ARROWS ONLY

**PATRICK ENGINEERING INC.**  
LISLE, ILLINOIS

**GHA GEWALT HAMILTON ASSOCIATES, INC.**  
850 Forest Edge Drive • Vernon Hills, IL 60061  
Consulting Engineers & Surveyors  
847-478-9700  
FAX: 847-478-9701

FILE NAME = 4153.800-tr1.dwg  
USER NAME = GHA  
PLOT SCALE = N.T.S.  
PLOT DATE = 8/2/10

DESIGNED - DPB  
DRAWN - ZCW  
CHECKED - DPB  
DATE - 8/2/10

REVISED -  
REVISED -  
REVISED -  
REVISED -



MCHENRY COUNTY  
DIVISION OF TRANSPORTATION

TEMPORARY TRAFFIC SIGNAL STAGING  
STAGES 2A, 2B, 2C, & 3  
JAMES R. RAKOW RD. AND VIRGINIA RD.  
SCALE: 1"=50'    SIGN SHEET # 33 OF 65 SHEETS    STA. TO STA.

F.A.P. RTE.	SECTION	COUNTY	TOTAL SHEETS	SHEET NO.
0336	05-00308-WR	McHENRY	606	342
CONTRACT #:			63398	
ILLINOIS FED. AID PROJECT				