

PINGREE ROAD
TEMPORARY CABLE PLAN

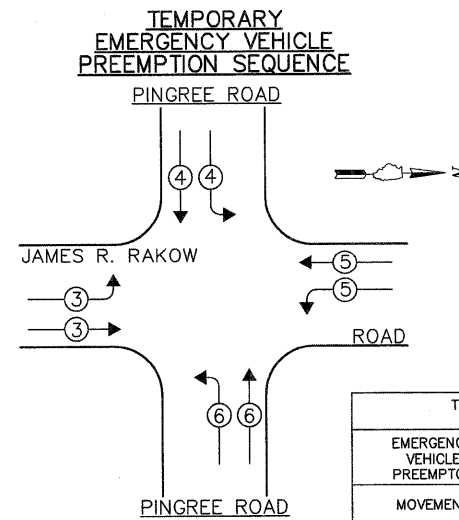
GHA GEWALT HAMILTON ASSOCIATES, INC.

850 Forest Edge Drive • Vernon Hills, IL 60061
Consulting Engineers & Surveyors
847-478-9700
FAX: 847-478-9701

PATRICK ENGINEERING INC.
LISLE, ILLINOIS

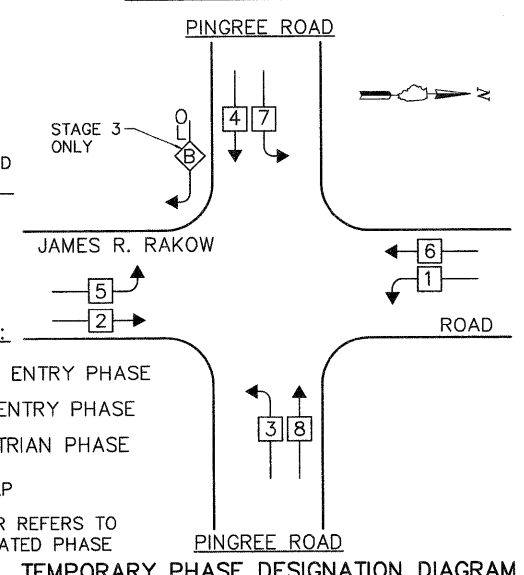
MCHENRY COUNTY DIVISION OF TRANSPORTATION TRAFFIC SIGNAL INSTALLATION ELECTRICAL SERVICE REQUIREMENTS					TOTAL WATTAGE
TYPE	NO LAMPS	WATTAGE		% OPERATION	
		INCAND.	L.E.D.		
SIGNAL (RED)	20	135	17	0.50	170.0
SIGNAL (YELLOW)	20	135	25	0.25	125.0
SIGNAL (GREEN)	20	135	15	0.25	75.0
ARROW	4	135	12	0.10	4.8
PED.SIGNAL		90	25	1.00	
CONTROLLER	1	100	100	1.00	100.0
BATTERY BACKUP	1	25	1.00		25.0
VIDEO SYSTEMS	1	150	1.00		150.0
LUMINAIRE	4	400	0.50		800.0
FLASHER				0.05	
TOTAL =					1,449.8

THE TRAFFIC SIGNAL CONTROL EQUIPMENT FOR THIS PROJECT SHALL BE "ECONOLITE" TO MATCH THE EXISTING ADJACENT SYSTEM.



OVERLAP LETTER B = PERMISSIVE PHASE 4 + PROTECTED PHASE 5

TEMPORARY CONTROLLER SEQUENCE



ENERGY COSTS - BILLED TO: CITY OF CRYSTAL LAKE
(ADDRESS) 100 WEST MUNICIPAL COMPLEX

ENERGY SUPPLY - CONTACT: MS. AUDREY HELGESEN
PHONE: (847) 816-5225
COMPANY: COMED-LIBERTYVILLE

FILE NAME = 4153.800-tr1.dwg

USER NAME = GHA
DESIGNED - DPB
DRAWN - ZCW
CHECKED - DPB
PLOT SCALE = N.T.S.
PLOT DATE = 8/2/10

REVISD -
REVISD -
REVISD -
REVISD -
DATE - 8/2/10



MCHENRY COUNTY
DIVISION OF TRANSPORTATION

TEMPORARY CABLE PLAN AND
TEMPORARY PHASE DESIGNATION DIAGRAM
JAMES R. RAKOW RD. AND PINGREE RD.

SCALE: N.A. SIGNAL SHEET # 39 OF 65 SHEETS STA. TO STA.

FAP RTE.	SECTION	COUNTY	TOTAL SHEETS	SHEET NO.
0336	05-00308-WR	MCHENRY	606	348
CONTRACT #:			63398	

ILLINOIS FED. AID PROJECT