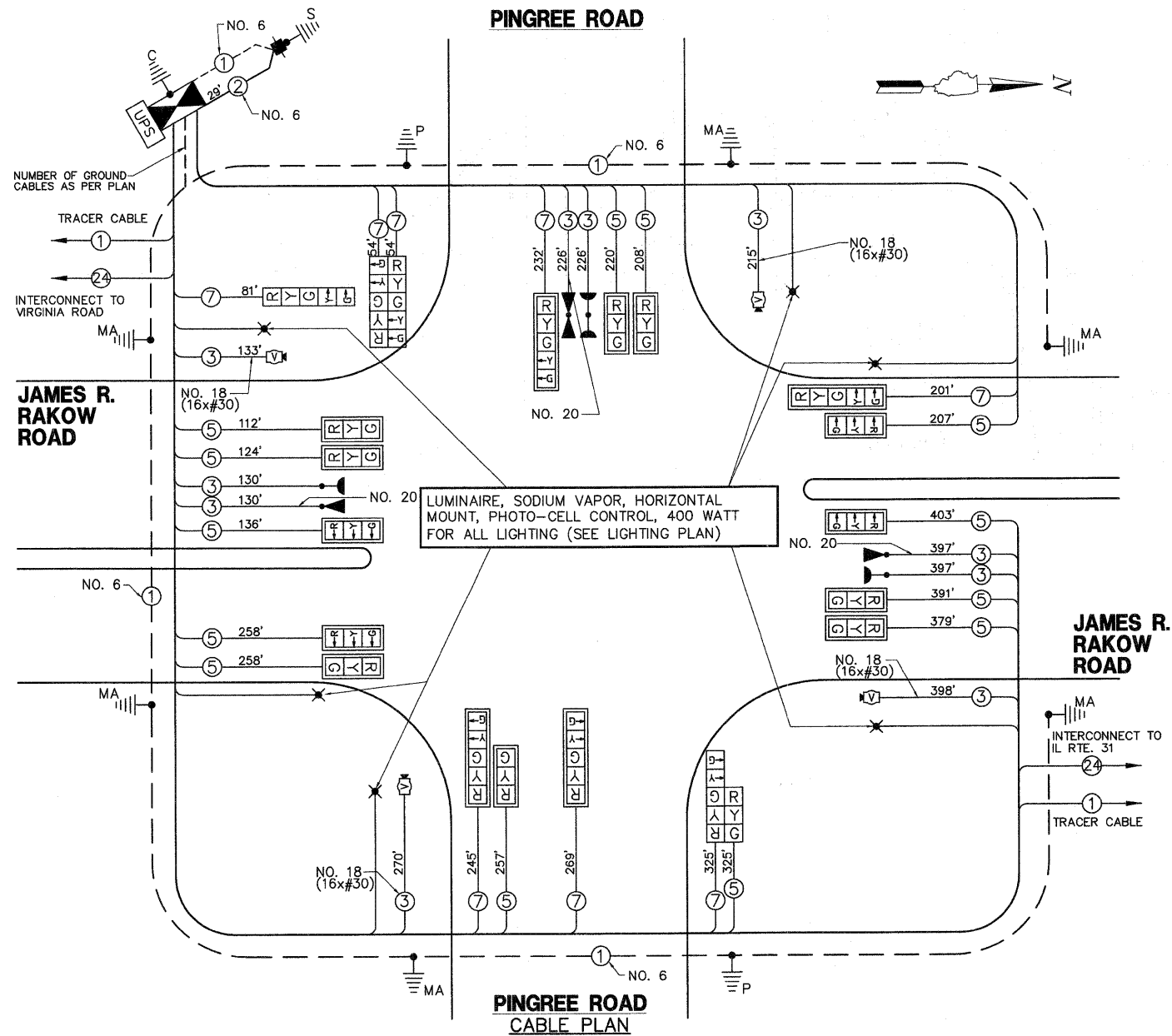


**SCHEDULE OF QUANTITIES**

JAMES R. RAKOW ROAD AT PINGREE ROAD TRAFFIC SIGNAL MODERNIZATION

NO.	QUANT.	UNIT	DESCRIPTION
1.	30.00	SQ FT	SIGN PANEL - TYPE 1
2.	8	FOOT	CONDUIT IN TRENCH, 2" DIA., GALVANIZED STEEL
3.	27	FOOT	CONDUIT IN TRENCH, 2 1/2" DIA., GALVANIZED STEEL
4.	113	FOOT	CONDUIT IN TRENCH, 3" DIA., GALVANIZED STEEL
5.	25	FOOT	CONDUIT IN TRENCH, 4" DIA., GALVANIZED STEEL
6.	520	FOOT	CONDUIT PUSHED, 4" DIA., GALVANIZED STEEL
7.	2	EACH	HANDHOLE
8.	2	EACH	DOUBLE HANDHOLE
9.	150	FOOT	TRENCH AND BACKFILL FOR ELECTRICAL WORK
10.	1	EACH	FULL-ACTUATED CONTROLLER AND TYPE IV CABINET, SPECIAL
11.	1	EACH	TRANSCIEVER - FIBER OPTIC
12.	753	FOOT	ELECTRIC CABLE IN CONDUIT, SIGNAL NO. 14 3C
13.	3,394	FOOT	ELECTRIC CABLE IN CONDUIT, SIGNAL NO. 14 5C
14.	1,467	FOOT	ELECTRIC CABLE IN CONDUIT, SIGNAL NO. 14 7C
15.	1,016	FOOT	ELECTRIC CABLE IN CONDUIT, COMMUNICATION NO. 18 3 PAIR
16.	29	FOOT	ELECTRIC CABLE IN CONDUIT, SERVICE, NO. 6 2 C
17.	2	EACH	TRAFFIC SIGNAL POST, GALVANIZED STEEL 16 FT.
18.	1	EACH	STEEL COMBINATION MAST ARM ASSEMBLY AND POLE 28 FT.
19.	1	EACH	STEEL COMBINATION MAST ARM ASSEMBLY AND POLE 38 FT.
20.	1	EACH	STEEL COMBINATION MAST ARM ASSEMBLY AND POLE 44 FT.
21.	1	EACH	STEEL COMBINATION MAST ARM ASSEMBLY AND POLE 48 FT.
22.	1	EACH	STEEL COMBINATION MAST ARM ASSEMBLY AND POLE 50 FT.
23.	1	EACH	STEEL COMBINATION MAST ARM ASSEMBLY AND POLE 62 FT.
24.	8	FOOT	CONCRETE FOUNDATION, TYPE A
25.	4	FOOT	CONCRETE FOUNDATION, TYPE C
26.	75	FOOT	CONCRETE FOUNDATION, TYPE E 36-INCH DIAMETER
27.	21	FOOT	CONCRETE FOUNDATION, TYPE E 42-INCH DIAMETER
28.	12	EACH	SIGNAL HEAD, LED, 1-FACE, 3-SECTION, MAST-ARM MOUNTED
29.	1	EACH	SIGNAL HEAD, LED, 1-FACE, 5-SECTION, BRACKET MOUNTED
30.	4	EACH	SIGNAL HEAD, LED, 1-FACE, 5-SECTION, MAST-ARM MOUNTED
31.	1	EACH	SIGNAL HEAD, LED, 2-FACE, 5-SECTION, BRACKET MOUNTED
32.	1	EACH	SIGNAL HEAD, LED, 2-FACE, 1-3 SECTION, 1-5 SECTION, BRACKET MOUNTED
33.	16	EACH	TRAFFIC SIGNAL BACKPLATE, LOUVERED, ALUMINUM
34.	3	EACH	LIGHT DETECTOR
35.	1	EACH	LIGHT DETECTOR AMPLIFIER
36.	1	EACH	TEMPORARY TRAFFIC SIGNAL INSTALLATION
37.	1	EACH	REMOVE EXISTING TRAFFIC SIGNAL EQUIPMENT
38.	9	EACH	REMOVE EXISTING HANDHOLE
39.	10	EACH	REMOVE EXISTING CONCRETE FOUNDATION
40.	1	EACH	TEMPORARY TRAFFIC SIGNAL TIMING
41.	1	EACH	SERVICE INSTALLATION - POLE MOUNTED
42.	1	EACH	UNINTERRUPTIBLE POWER SUPPLY
43.	605	FOOT	ELECTRIC CABLE IN CONDUIT, GROUNDING, NO. 6 1 C
44.	753	FOOT	ELECTRIC CABLE IN CONDUIT NO. 20 3/C, TWISTED, SHIELDED
45.	1	EACH	VIDEO DETECTION SYSTEM COMPLETE INTERSECTION
46.	4	EACH	LED INTERNALLY ILLUMINATED STREET NAME SIGN



850 Forest Edge Drive • Vernon Hills, IL 60061  
 Consulting Engineers & Surveyors  
 847-478-9730  
 FAX: 847-478-9731

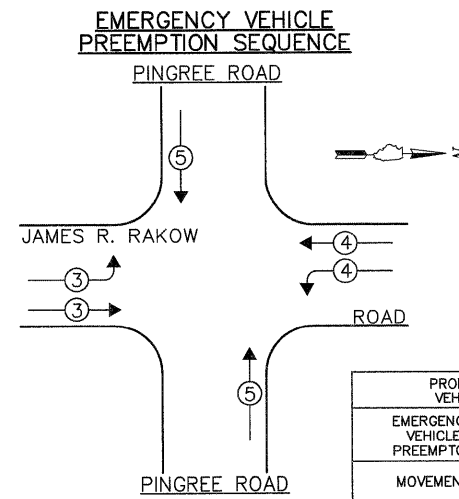


McHENRY COUNTY DIVISION OF TRANSPORTATION TRAFFIC SIGNAL INSTALLATION ELECTRICAL SERVICE REQUIREMENTS					TOTAL WATTAGE
TYPE	NO LAMPS	WATTAGE		% OPERATION	
		INCAND.	L.E.D.		
SIGNAL (RED)	21	135	17	0.50	178.5
SIGNAL (YELLOW)	21	135	25	0.25	131.25
SIGNAL (GREEN)	21	135	15	0.25	78.75
ARROW	16	135	12	0.10	19.2
PED.SIGNAL		90	25	1.00	
CONTROLLER	1	100	100	1.00	100.0
BATTERY BACKUP	1		25	1.00	25.0
VIDEO SYSTEMS	1		150	1.00	150.0
LUMINAIRE	6	400		0.50	1200.0
L.E.D. ST. NAME SIGN			64	0.50	128.0
FLASHER				0.05	
TOTAL =					2,010.5

THE TRAFFIC SIGNAL CONTROL EQUIPMENT FOR THIS PROJECT SHALL BE "ECONOLITE" TO MATCH THE EXISTING ADJACENT SYSTEM.

ENERGY COSTS - BILLED TO: CITY OF CRYSTAL LAKE  
 (ADDRESS) 100 WEST MUNICIPAL COMPLEX

ENERGY SUPPLY - CONTACT: MS. AUDREY HELGESEN  
 PHONE: (847) 816-5225  
 COMPANY: COMED-LIBERTYVILLE



OVERLAP LETTER	PERMISSIVE PHASE	PROTECTED PHASE
B	= 4	+ 5
C	= 6	+ 7

- LEGEND:**
- [Symbol] SINGLE ENTRY PHASE
  - [Symbol] DUAL ENTRY PHASE
  - [Symbol] PEDESTRIAN PHASE
  - [Symbol] OVERLAP
  - \* NUMBER REFERS TO ASSOCIATED PHASE

