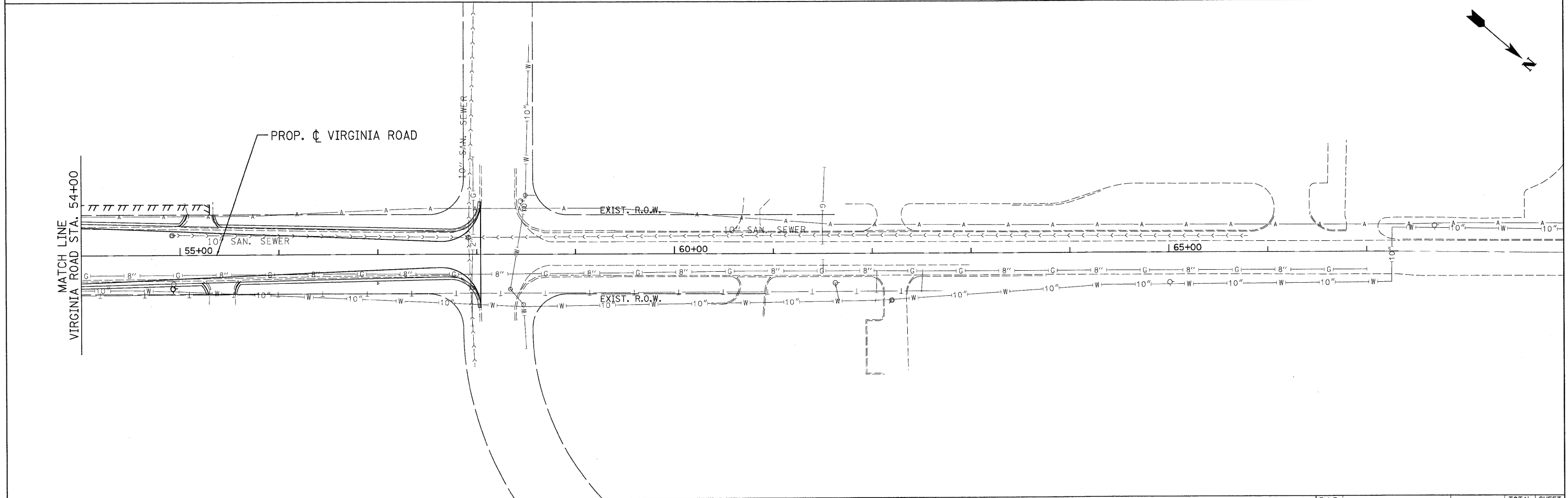


NOTES

1. LIGHT LOCATIONS LSB-F5 AND LSB-H7 SHALL HAVE A 5 DEGREE TILT.
2. REFER TO TRAFFIC SIGNAL PLANS FOR STATIONING AND OFFSET OF THE COMBINATION LIGHT/TRAFFIC SIGNAL POLES.
3. SEE SHEET LT-01 FOR THE SYMBOL LEGEND AND GENERAL NOTES.



<p>PATRICK ENGINEERING INC. LISLE, ILLINOIS</p>	USER NAME = tkoeppen@rdwy.lisle PLOT CONFIG = PDF(Gray, Large).plt PLOT SCALE = 1:50 PLOT DATE = 7/29/2010	DESIGNED - CMH DRAWN - MJP CHECKED - DH DATE - 8/2/2010	REVISED - REVISED - REVISED - REVISED -	<p>MCHENRY COUNTY DIVISION OF TRANSPORTATION</p>	<p>RAKOW ROAD FROM ACKMAN ROAD TO ILLINOIS ROUTE 31 VIRGINIA ROAD PROPOSED LIGHTING PLAN</p>		F.A.P. RTE. 0336	SECTION 05-00308-00-WR	COUNTY MCHENRY	TOTAL SHEETS 606	SHEET NO. 386	CONTRACT NO. 63398
	SCALE: 1"=50' SHEET NO. LT 12 OF 28 STA. TO STA.	FED. ROAD DIST. NO. ILLINOIS FED. AID PROJECT										

q:\mdata\28958_001\drawings\rdwy\shs\light\SL.Lt.10_Virginia.dgn