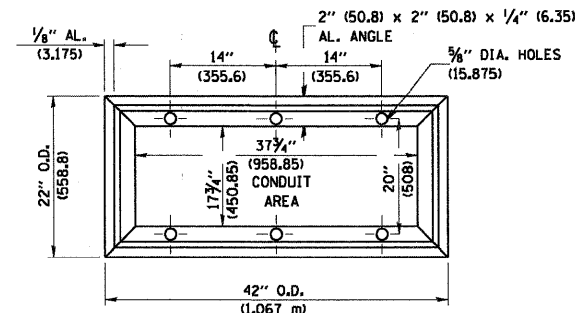
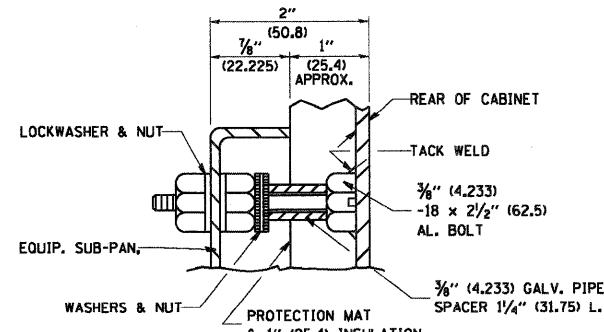


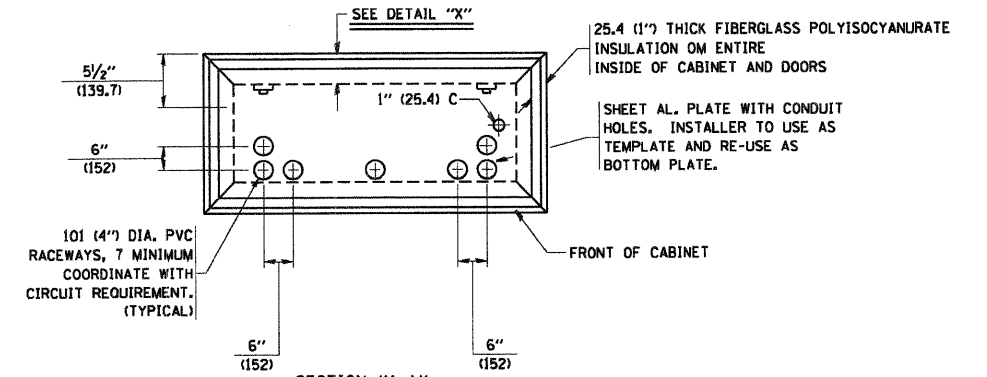
DETAIL "Y"



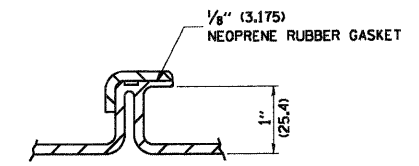
BASE MTG. DETAIL



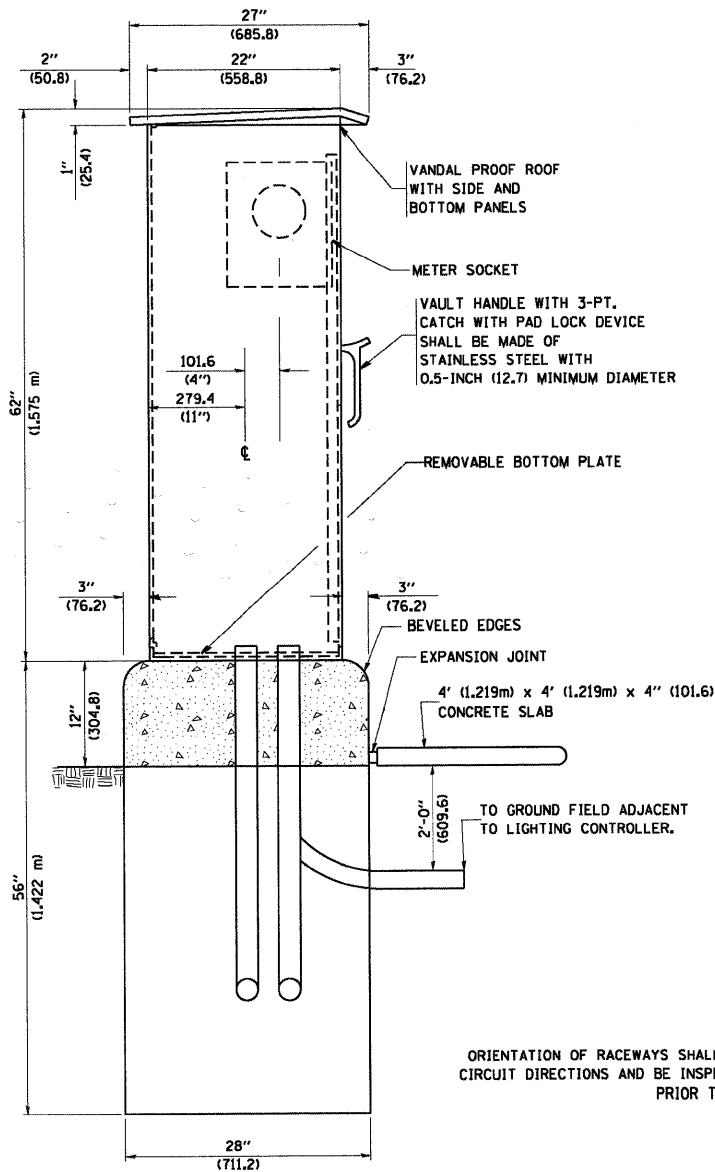
DETAIL "X"



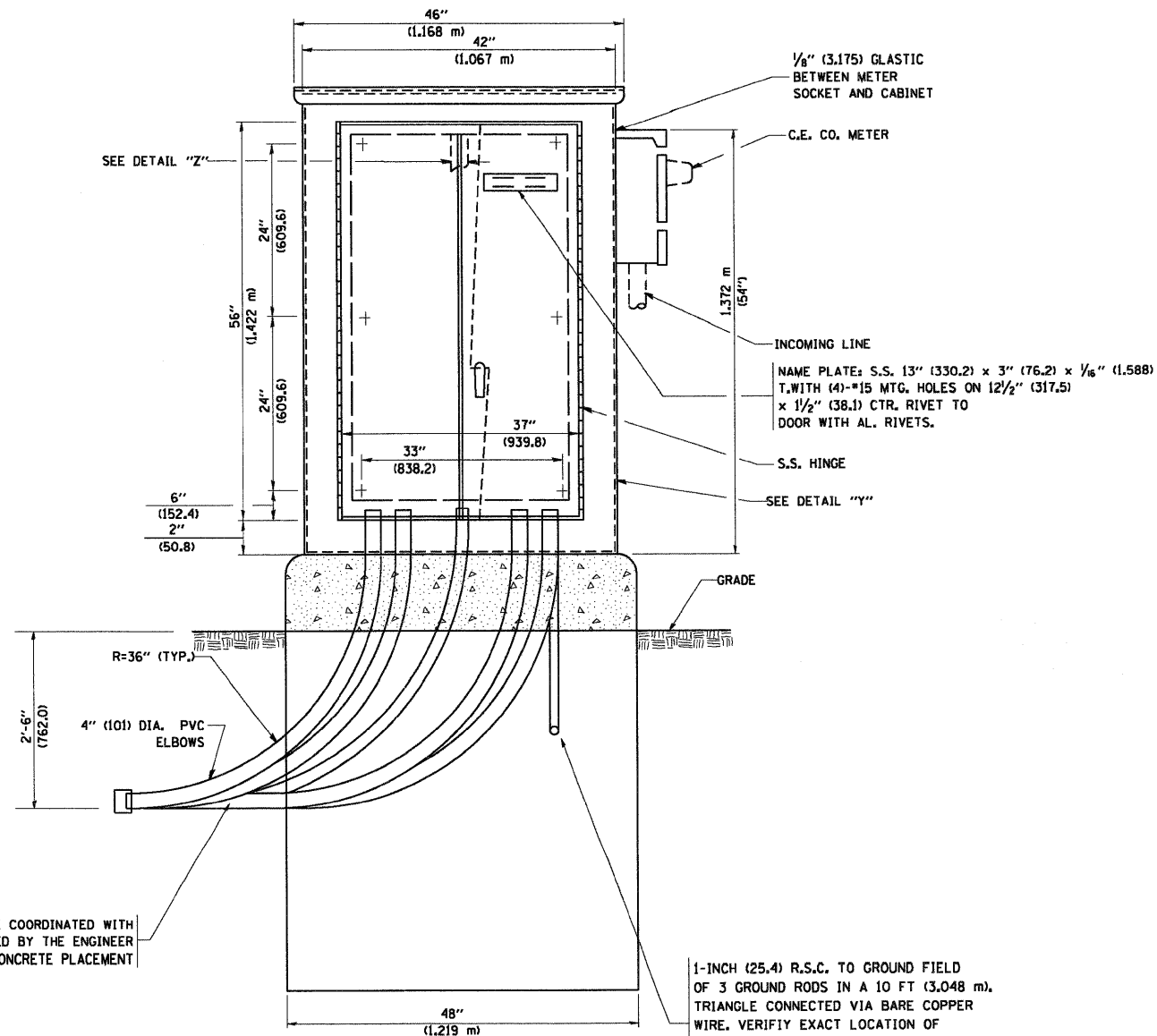
SECTION "A-A"



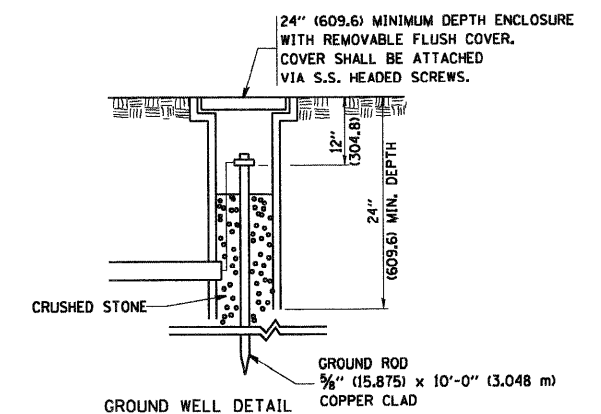
DETAIL "Z"



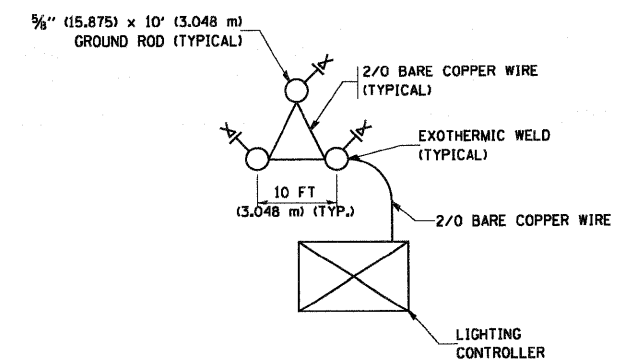
LEFT SIDE ELEVATION



FRONT ELEVATION



GROUND WELL DETAIL



GROUND FIELD DETAIL (N.T.S.)

THE CONTRACTOR SHALL VERIFY EXACT LOCATION WITH THE ENGINEER

1-INCH (25.4) R.S.C. TO GROUND FIELD OF 3 GROUND RODS IN A 10 FT (3.048 m), TRIANGLE CONNECTED VIA BARE COPPER WIRE. VERIFY EXACT LOCATION OF GROUND FIELD WITH THE ENGINEER. NO GROUND WELL SHALL BE PLACED IN CONCRETE PAD IN FRONT OF CONTROLLER.

ORIENTATION OF RACEWAYS SHALL BE COORDINATED WITH CIRCUIT DIRECTIONS AND BE INSPECTED BY THE ENGINEER PRIOR TO CONCRETE PLACEMENT

E-200

PATRICK
ENGINEERING INC.
LISLE, ILLINOIS

USER NAME = tkoeppen@rdwy.lisle
PLOT CONFIG = PDF(Grey, Large).plt
PLOT SCALE = 1:50
PLOT DATE = 7/29/2010

DESIGNED - CMH
DRAWN - MJP
CHECKED - DH
DATE - 8/2/2010

REVISED -
REVISED -
REVISED -
REVISED -

STATE OF ILLINOIS
DEPARTMENT OF TRANSPORTATION

RAKOW ROAD FROM ACKMAN ROAD TO ILLINOIS ROUTE 31
LIGHTING CONTROLLER, DUPLEX TYPE (3 OF 4)

SCALE: NONE SHEET NO. LT 23 OF 28 STA. TO STA.

F.A.P. RTE.	SECTION	COUNTY	TOTAL SHEETS	SHEET NO.
0336	05-00308-00-WR	MCHENRY	606	397
E-200 (BE-200)			CONTRACT NO. 63398	
FED. ROAD DIST. NO. [ILLINOIS] FED. AID PROJECT				