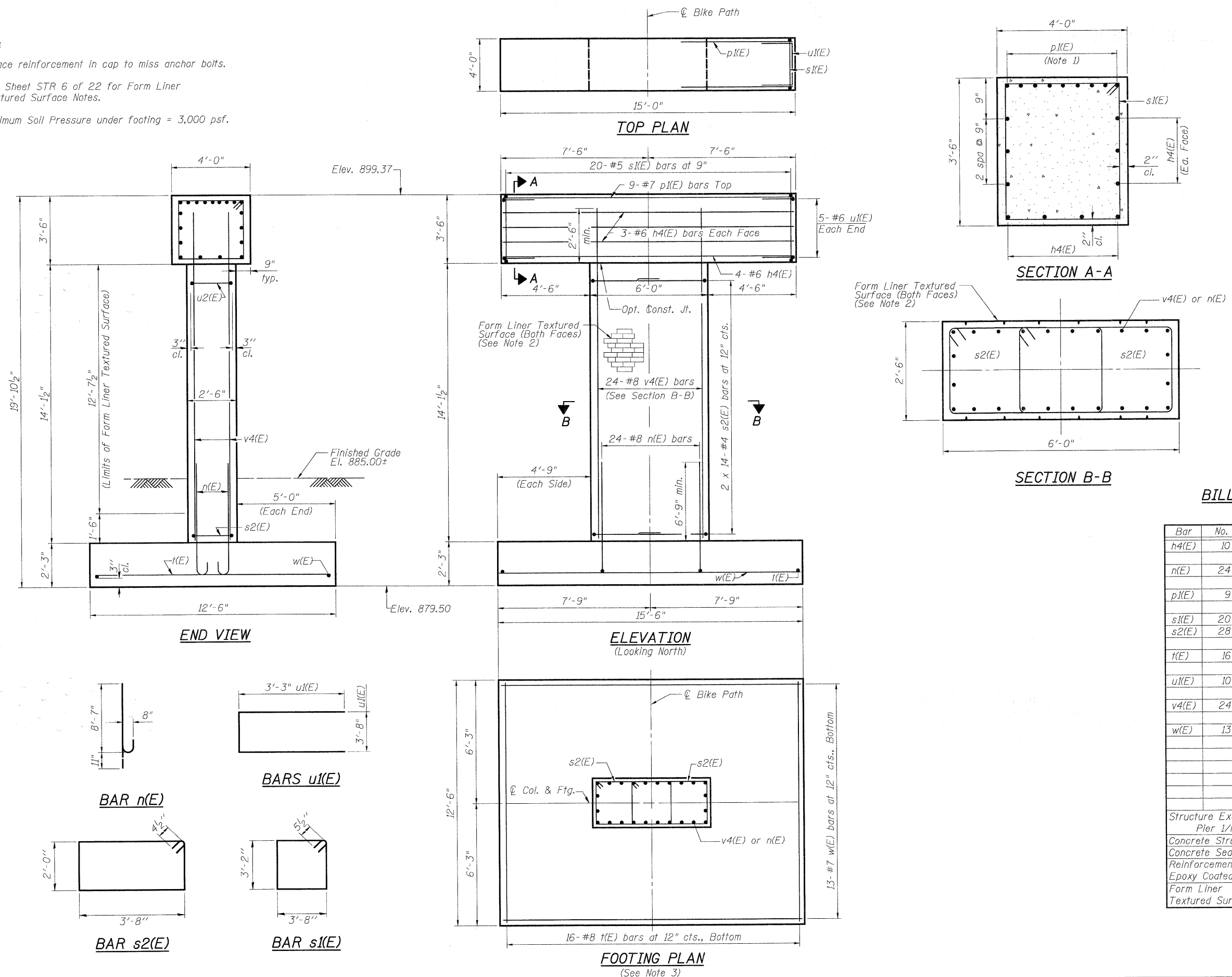


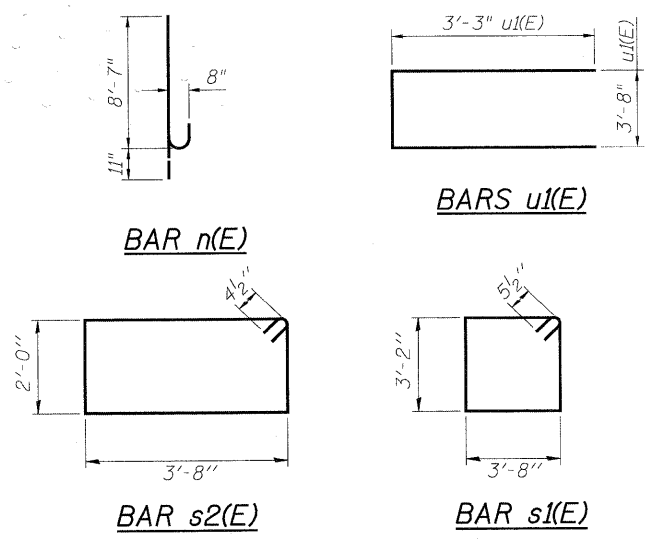
NOTES:

1. Space reinforcement in cap to miss anchor bolts.
2. See Sheet STR 6 of 22 for Form Liner Textured Surface Notes.
3. Maximum Soil Pressure under footing = 3,000 psf.



BILL OF MATERIAL
(For one Pier)

Bar	No.	Size	Length	Shape
h4(E)	10	#6	14'-8"	—
n(E)	24	#8	9'-8"	C
p1(E)	9	#7	14'-8"	—
s1(E)	20	#5	14'-7"	⊞
s2(E)	28	#4	12'-1"	⊞
t(E)	16	#8	12'-2"	—
u1(E)	10	#6	10'-2"	⊞
v4(E)	24	#8	16'-5"	—
w(E)	13	#7	15'-2"	—
Structure Excavation			Cu. Yd.	29.8/ 59.6
Pier 1/Pier 2				
Concrete Structures			Cu. Yd.	31.8
Concrete Sealer			Sq. Ft.	60
Reinforcement Bars, Epoxy Coated			Pound	3,770
Form Liner Textured Surface			Sq. Ft.	152



FOOTING PLAN
(See Note 3)

PIERS

<p>PATRICK ENGINEERING INC. LISLE, ILLINOIS</p>	USER NAME = Rdky.Lisle PLOT CONFIG = PDF(Grey, Large).plt PLOT SCALE = 1:2.5 PLOT DATE = 7/28/2010	DESIGNED - A. Durbak DRAWN - A. Durbak CHECKED - A. Yarglooglu DATE - 8/2/2010	REVISED - REVISED - REVISED - REVISED -	<p>MCHENRY COUNTY DIVISION OF TRANSPORTATION</p>	<p>RAKOW ROAD FROM ACKMAN ROAD TO ILLINOIS ROUTE 31 PEDESTRIAN BRIDGE OVER RAKOW ROAD STA 173 + 34.68 STRUCTURE NO. 056-9921</p>	F.A. RTE. 0336	SECTION 05-00308-00-WR	COUNTY MCHENRY	TOTAL SHEETS 606	SHEET NO. 407
	SCALE: NONE	SHEET NO. STR 5 OF 22	STA. TO STA.			FED. ROAD DIST. NO. [ILLINOIS] FED. AID PROJECT	CONTRACT NO.			