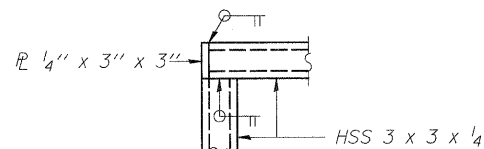
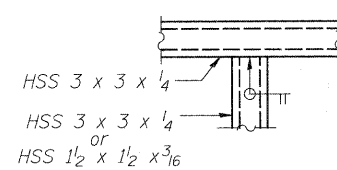


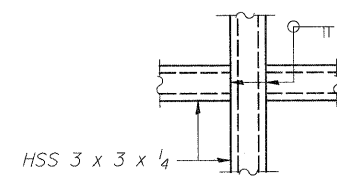
BICYCLE RAILING DETAIL



DETAIL A



DETAIL B



DETAIL C

BICYCLE RAILING NOTES:

Hollow structural tubing shall conform to the requirements of ASTM designation A 847 for cold formed welded square and rectangular tubing and the requirements of Section 1006 of the Standard Specifications.

All posts, railing, and splices shall be prepared according to the Special Provision for "Surface Preparation and Painting Requirements for Weathering Steel."

Non shrink grout shall be according to Article 1024 of the Standard Specifications.

Prior to beginning construction or fabrication, the Contractor shall submit six sets of shop drawings for bicycle railing to the Engineer for review and approval.

FORM LINER TEXTURED SURFACE NOTES:

The surface treatment shall be accomplished by the use of form liners. Random Ashlar Limestone Form Liner Pattern with a relief of 1" to 1 1/2" or approved equivalent shall be used.

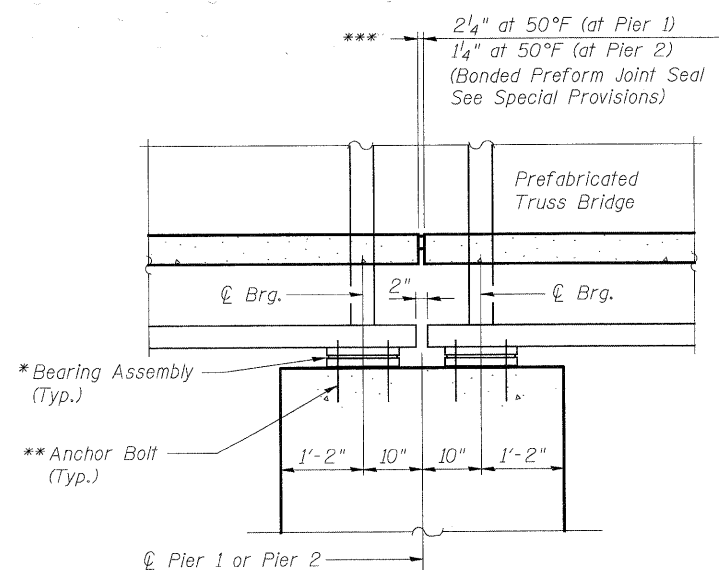
The textured surfaces towards the traveled way shall receive a coating to seal the surfaces against the intrusion of deicing salts. The concrete sealer shall have a clear color when dry and shall conform to the requirements of the Article 1026 of the Standard Specifications.

The preferred color of the textured surfaces is tan. If other colors are submitted for review they shall be of similar complimentary colors. Coloring shall be accomplished by the use of stains or coatings. The staining or coating products must be compatible with the surface sealing coating specified herein. The Engineer may waive the requirement of a separate concrete sealer product if the staining or coating product also meets the performance requirements of the concrete sealer product. Products used to color the concrete surfaces shall be free of oil and wax, exhibit excellent resistance to weathering, and shall exhibit no efflorescence.

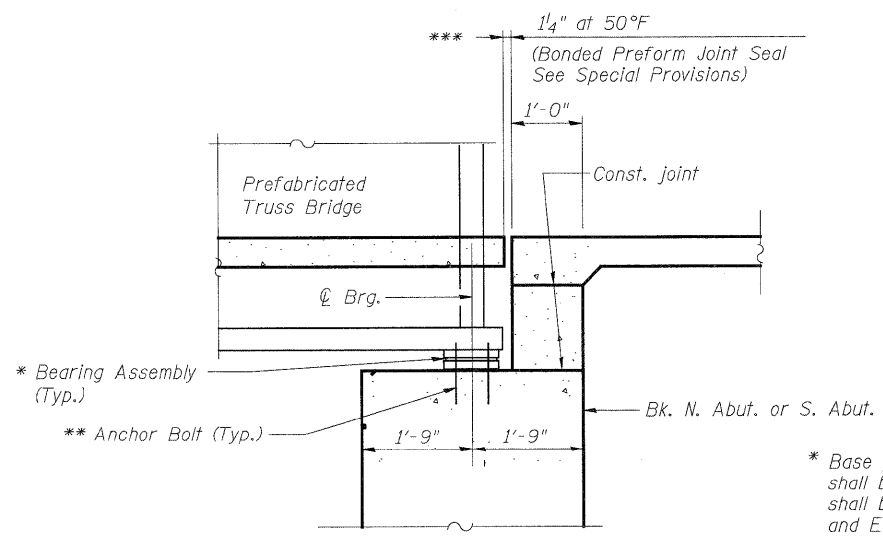
Cost of coloring and concrete sealer coating of the textured surfaces is included with the item "Form Liner Textured Surface".

BILL OF MATERIAL

ITEM	UNIT	TOTAL
Bicycle Railing, Special	Foot	43



SECTION THRU PIER CAP



SECTION THRU ABUTMENT

BRIDGE JOINT DETAILS

* Base plate, teflon pad, setting plate, and fabric pad shall be supplied by Bridge Manufacturer. Bearings shall be detailed and installed in order to provide the Fixed and Expansion End conditions as shown in the plans and to resist the forces as shown on the Bridge Reactions Table.

** Contractor shall coordinate with Bridge Manufacturer for Anchor Bolt Requirements. Cost of Anchor Bolts shall be included with the item "Pedestrian Truss Superstructure".

*** Joint seal shall be capable of accommodating movements of ± 1/2" and ± 7/8" for 1 1/4" joints and 2 1/4" joints, respectively.

DETAILS

G:\MCD001\20958.001\Drawings\STRUCT\FinalPlans\506 Bridge Details.dgn