

Benchmark: Rebar at Signal Foundation, Sta. 170+28.13, 34.11' RT, EL = 884.69

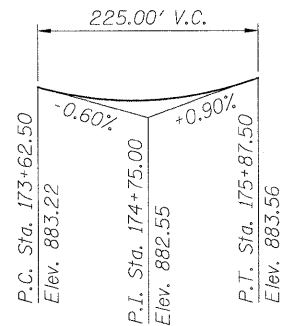
Existing Structure: None

**INDEX OF SHEETS**

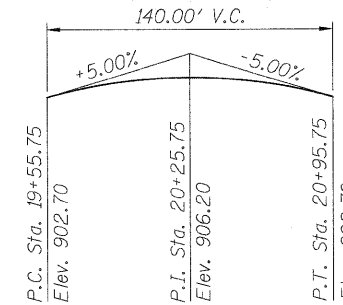
- STR 7. WALL LAYOUT
- STR 8. EAST WALLS
- STR 9. WEST WALLS
- STR 10. WALL DETAILS

**CURVE RAK 6 DATA**

$\Delta = 3^\circ 47' 46''$  (RT)  
 $D = 0^\circ 34' 23''$   
 $T = 331.40'$   
 $L = 662.55'$   
 $E = 5.49'$   
 $R = 10,000.00'$   
 $S.E. = NC$   
 $P.C. = Sta. 168+26.89$   
 $P.T. = Sta. 174+89.45$   
 $P.I. = Sta. 171+58.29$



**PROFILE GRADE**  
(along P.G. Rakow Road)



**PROFILE GRADE**  
(along P.G. Bike Path)

**HIGHWAY CLASSIFICATION**

F.A.P. Rte. 0336 - Rakow Road  
 Functional Class: Strategic Regional Arterial  
 ADT: 16.5k-39.4k (2008); 29k-66k (2030)  
 DHV: 1030-3000  
 Design Speed: 45 mph  
 Posted Speed: 45 mph

**DESIGN SPECIFICATIONS**

2007 AASHTO LRFD Bridge Design Specifications  
 with 2008 Interim

**LOADING**

H10 Service Vehicle or Pedestrian Live Load

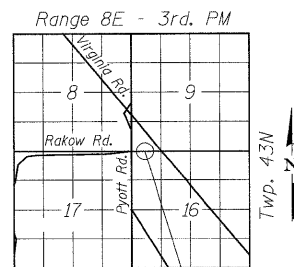
**DESIGN STRESSES**

**FIELD UNITS**

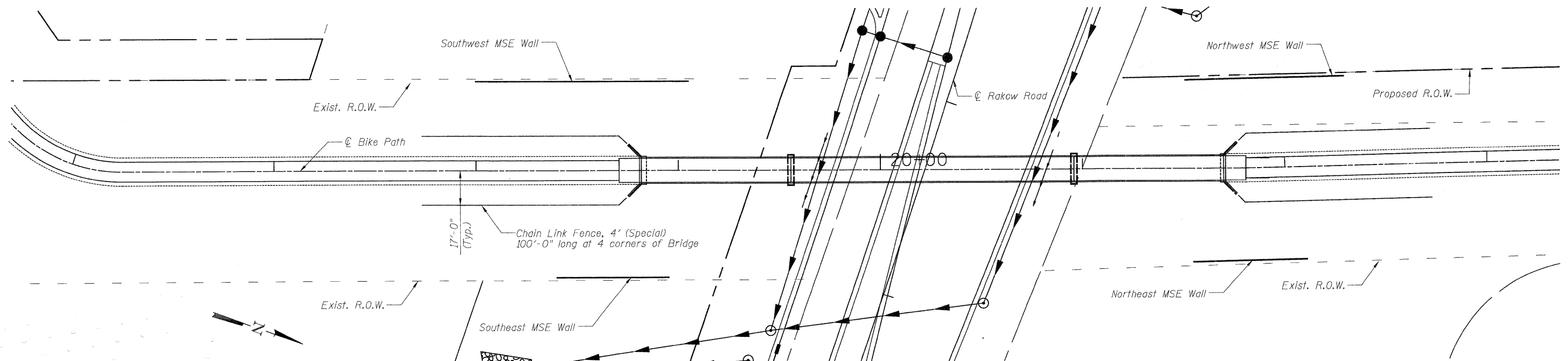
$f'_c = 3,500$  psi  
 $f_y = 60,000$  psi (reinforcement)

**PRECAST UNITS**

$f'_c = 4,500$  psi (Precast Panels)



**LOCATION SKETCH**

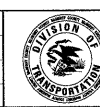


**KEY PLAN**

**WALL LAYOUT**



USER NAME = Raky.Lisle	DESIGNED - A. Durbak	REVISED -
PLOT CONFIG = PDFGrey_Large.plt	DRAWN - A. Durbak	REVISED -
PLOT SCALE = 1:25	CHECKED - A. Yargicoglu	REVISED -
PLOT DATE = 7/28/2010	DATE - 8/2/2010	REVISED -



**MCHENRY COUNTY  
 DIVISION OF TRANSPORTATION**

**RAKOW ROAD FROM ACKMAN ROAD TO ILLINOIS ROUTE 31  
 PEDESTRIAN BRIDGE OVER RAKOW ROAD  
 STA 173 + 34.68 STRUCTURE NO. 056-9921**

F.A. RTE. 0336	SECTION 05-00308-00-WR	COUNTY MCHENRY	TOTAL SHEETS 606	SHEET NO. 409
SCALE: NONE		SHEET NO. STR 7 OF 22		TO STA.
FED. ROAD DIST. NO. [ILLINOIS] FED. AID PROJECT				