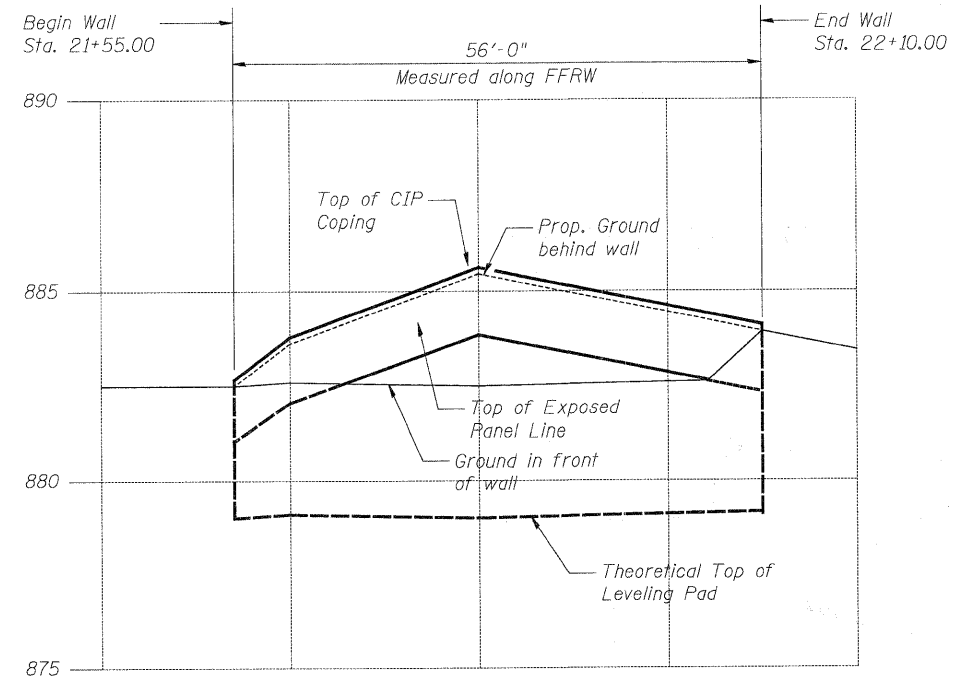
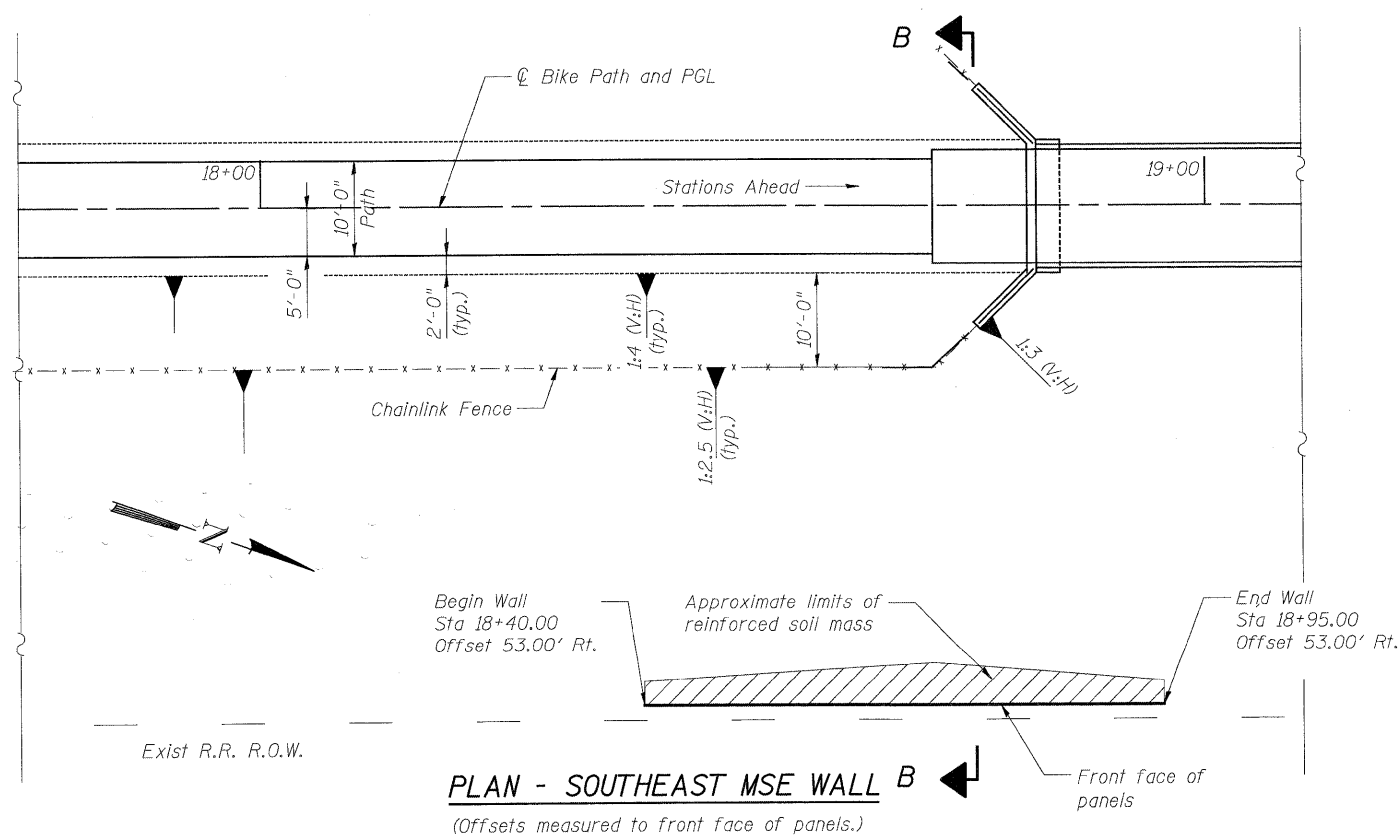


**ELEVATION - SOUTHEAST MSE WALL**  
(Looking West at Front Face of Retaining Wall)

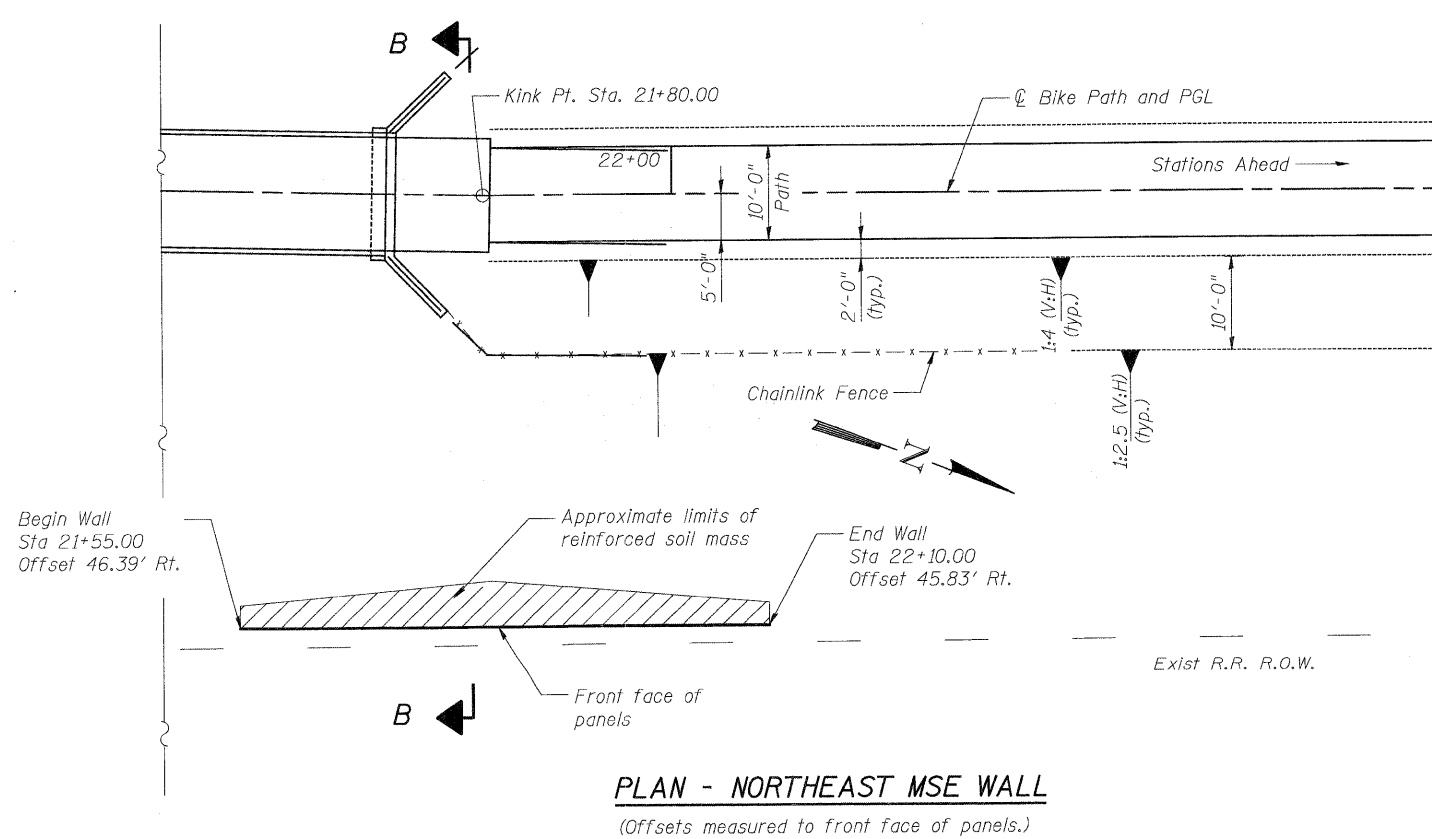


**ELEVATION - NORTHEAST MSE WALL**  
(Looking West at Front Face of Retaining Wall)

Note:  
For Section B-B, see Sheet STR 10 of 22.



**PLAN - SOUTHEAST MSE WALL**  
(Offsets measured to front face of panels.)



**PLAN - NORTHEAST MSE WALL**  
(Offsets measured to front face of panels.)

**EAST WALLS**

<p><b>PATRICK ENGINEERING INC.</b> LISLE, ILLINOIS</p>	USER NAME = Rdy.Lisle PLOT CONFIG = PDF(Reg.Large).plt PLOT SCALE = 1:10 PLOT DATE = 7/28/2010	DESIGNED - A. Durbak DRAWN - A. Durbak CHECKED - A. Yargicoglu DATE - 8/2/2010	REVISED - REVISED - REVISED - REVISED -	<p><b>MCHENRY COUNTY</b> DIVISION OF TRANSPORTATION</p>	<p><b>RAKOW ROAD FROM ACKMAN ROAD TO ILLINOIS ROUTE 31</b> <b>PEDESTRIAN BRIDGE OVER RAKOW ROAD</b> <b>STA 173+34.68 STRUCTURE NO. 056-9921</b></p>	F.A. RTE. 0336 SECTION 05-00308-00-WR COUNTY MCHENRY TOTAL SHEETS 606 SHEET NO. 410	CONTRACT NO.
	SCALE: NONE	SHEET NO. STR 8 OF 22	STA. TO STA.			FED. ROAD DIST. NO. ILLINOIS FED. AID PROJECT	