

Benchmark: PEI 560-4' Rebar, Sta. 107+57.83, 73.72' LT, EL = 890.35

INDEX OF SHEETS

STR 11. GENERAL PLAN AND ELEVATION
STR 12. WALL DETAILS

HIGHWAY CLASSIFICATION

F.A.P. Rte. 0336 - Rakow Road
Functional Class: Strategic Regional Arterial
ADT: 16.5k-39.4k (2008); 29k-66k (2030)
DHW: 1030-3000
Design Speed: 45 mph
Posted Speed: 45 mph

DESIGN SPECIFICATIONS

2007 AASHTO LRFD Bridge Design Specifications
with 2008 Interims

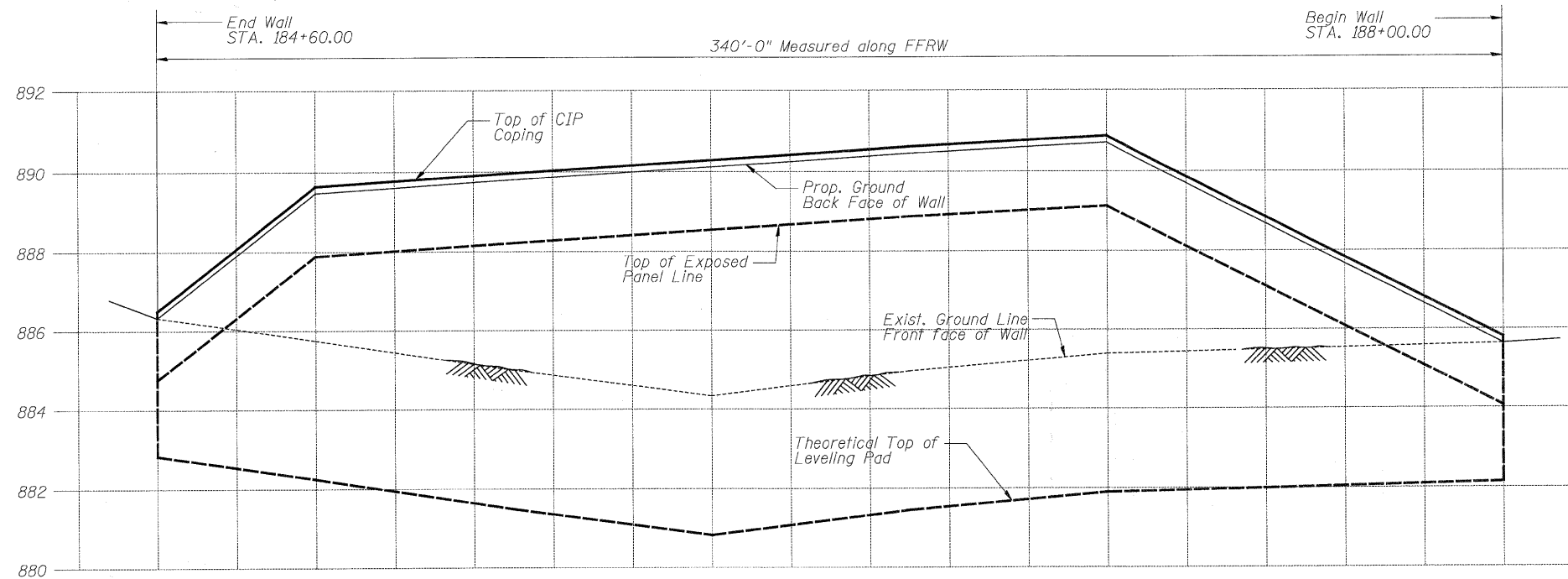
DESIGN STRESSES

FIELD UNITS

$f'_c = 3,500$ psi
 $f_y = 60,000$ psi (Reinforcement)

PRECAST UNITS

$f'_c = 4,500$ psi (Precast Panels)

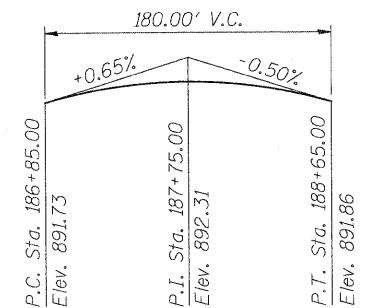


ELEVATION

(Looking North at Back Face of wall)

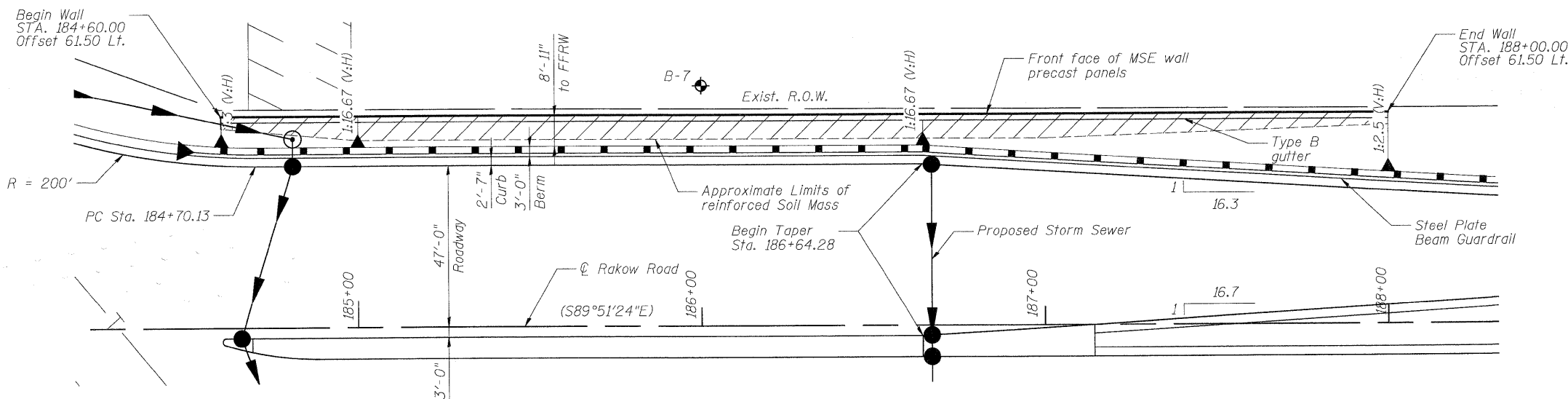
TABLE OF WALL ELEVATIONS

Item	STA 184+60.00	STA 185+00.00	STA 186+00.00	STA 187+00.00	STA 188+00.00
Top of exposed panel line	886.03	888.12	888.77	889.36	884.26
Finished grade line at FF of wall	887.61	885.70	884.28	885.34	885.34
Theoretical top of leveling pad	884.11	882.20	880.78	881.84	882.09



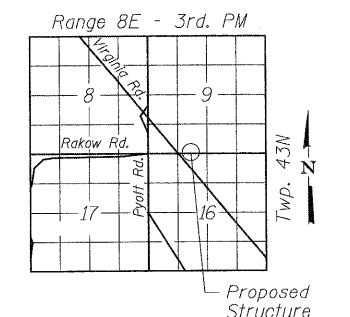
PROFILE GRADE

(along P.G. Rakow Road)



PLAN

(Offsets are measured from \odot Rakow Road to Front Face of Precast Panels)



LOCATION SKETCH

GENERAL PLAN AND ELEVATION

<p>PATRICK ENGINEERING INC. LISLE, ILLINOIS</p>	USER NAME = Rdwy_Lisle PLOT CONFIG = PDFGrey_Large.plt PLOT SCALE = 1:200 PLOT DATE = 7/28/2010	DESIGNED - A. Durbak DRAWN - A. Durbak CHECKED - A. Yargiooglu DATE - 8/2/2010	REVISED - REVISED - REVISED - REVISED -	<p>MCHENRY COUNTY DIVISION OF TRANSPORTATION</p>	<p>RAKOW ROAD FROM ACKMAN ROAD TO ILLINOIS ROUTE 31 RETAINING WALL</p>		F.A. RTE. 0336 SECTION 05-00308-00-WR COUNTY MCHENRY TOTAL SHEETS 606 SHEET NO. 413	CONTRACT NO.
	SCALE: NONE SHEET NO. STR 11 OF 22 STA. TO STA.				FEDERAL ROAD DIST. NO. ILLINOIS FED. AID PROJECT			