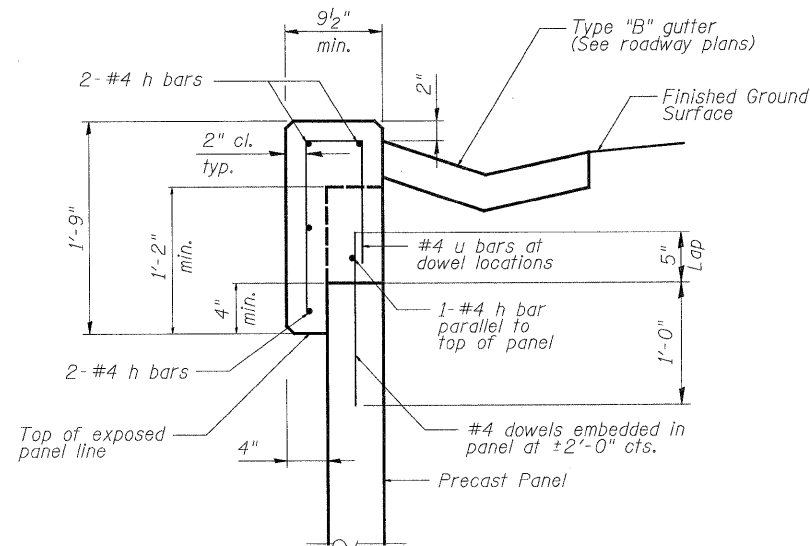


TYPICAL WALL SECTION
(Looking East)

* Wall dimensions to be determined during final design. Allowable soil bearing capacity is 3,000 psf.



CIP COPING DETAIL

Cost of C.I.P. Coping and reinforcement included with the item "Mechanically Stabilized Earth Retaining Wall"

BILL OF MATERIAL

ITEM	UNIT	TOTAL
Mechanically Stabilized Earth Retaining Wall	Sq. Ft.	2,113
Structure Excavation	Cu. Yd.	247

WALL DETAILS

<p>PATRICK ENGINEERING INC. LISLE, ILLINOIS</p>	USER NAME = Rdwg.Lisle PLOT CONFIG = PDF(Greg.Large).plt PLOT SCALE = 1:20 PLOT DATE = 7/28/2010	DESIGNED - A. Durbak DRAWN - A. Durbak CHECKED - A. Yargicoglu DATE - 8/2/2010	REVISED - REVISED - REVISED - REVISED -	<p>MCHENRY COUNTY DIVISION OF TRANSPORTATION</p>	<p>ROKOW ROAD FROM ACKMAN ROAD TO ILLINOIS ROUTE 31 RETAINING WALL</p>		F.A. RTE. 0336	SECTION 05-00308-00-WR	COUNTY MCHENRY	TOTAL SHEETS 606	SHEET NO. 414
	SCALE: NONE	SHEET NO. STR 12 OF 22	STA. TO STA.				FED. ROAD DIST. NO. ILLINOIS FED. AID PROJECT				