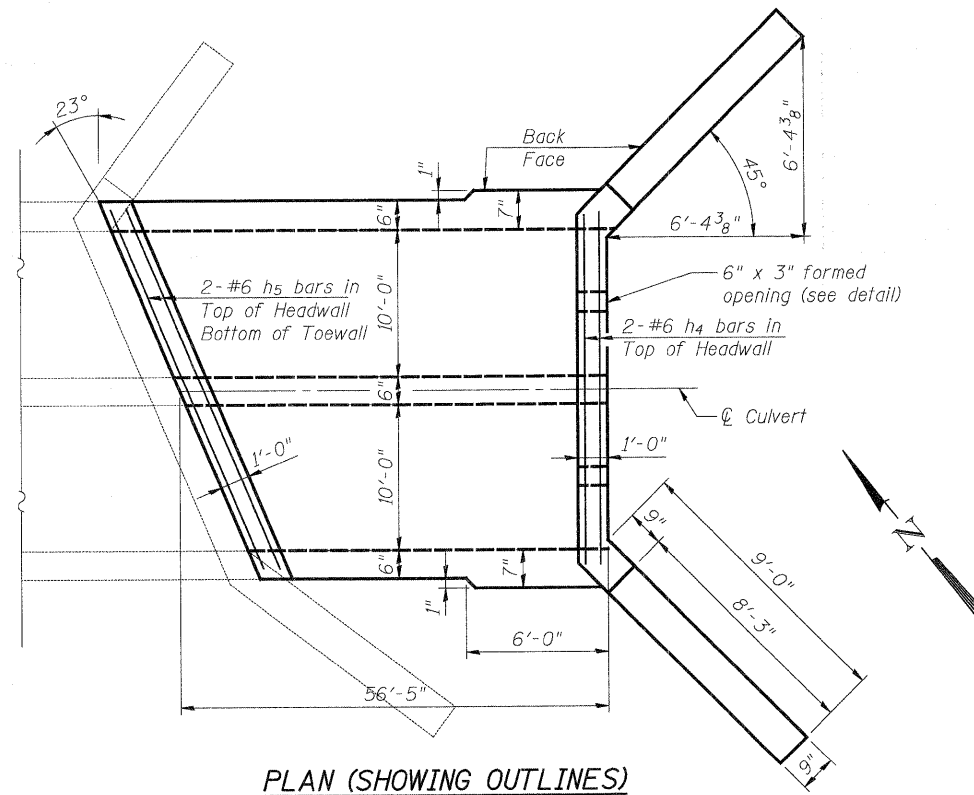
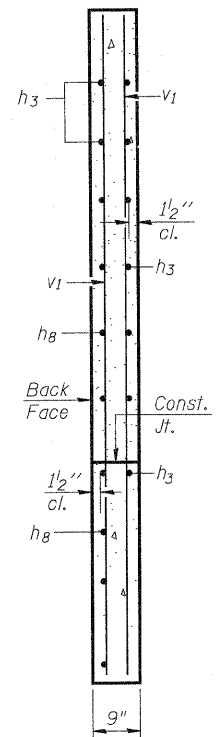


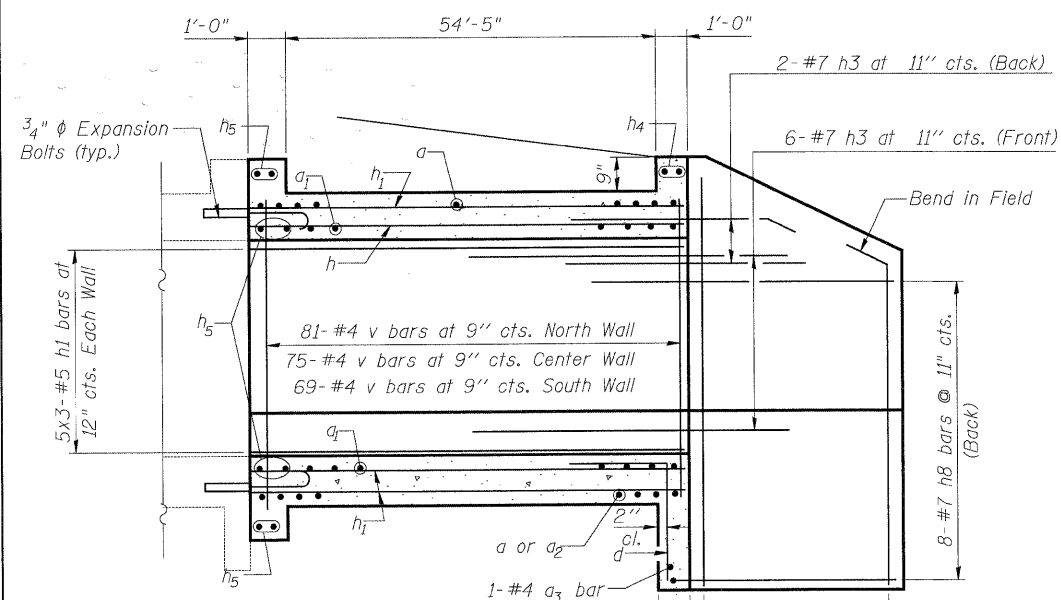
HALF ELEVATION



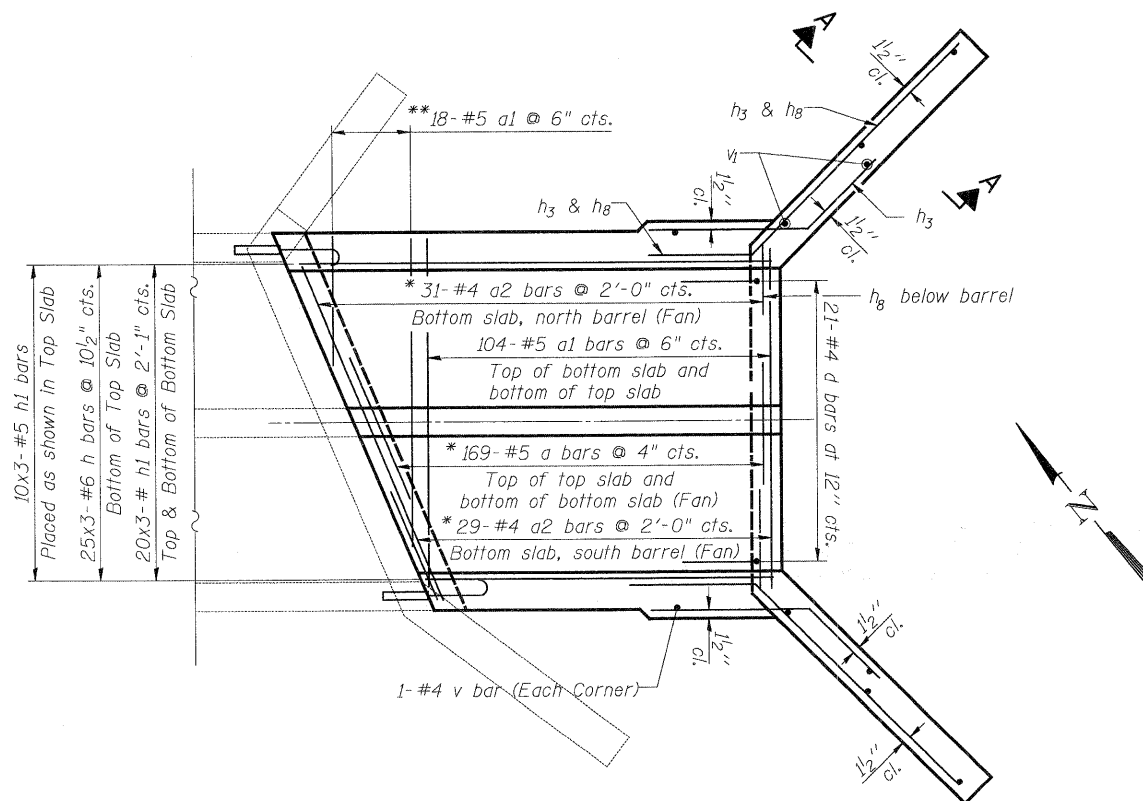
PLAN (SHOWING OUTLINES)



SECTION A-A



HALF LONG. SECTION



PLAN (SHOWING REINFORCEMENT)

MIN. LAP SPLICE

#5 bar = 1'-8"
#6 bar = 2'-0"

- * Fan bars from along the skew to square.
- ** Order bars full length, cut to fit and use remainder in opposite slab.

NOTES

A distance of half the length of the wingwall but not less than six feet of the barrel shall be poured monolithically with the wingwalls.
Bars indicated thus 12 x 4-#5 etc. indicates 12 lines of bars with 4 lengths per line.

CULVERT DETAILS I

| | | | | | | | | | |
|--|---|--|--|---|---|---|--|---|--------------|
| <p>PATRICK ENGINEERING INC. LISLE, ILLINOIS</p> | USER NAME = Rduy_Lisle PLOT CONFIG = PDF(Reg, Large).plt PLOT SCALE = 1:10 PLOT DATE = 7/28/2010 | DESIGNED - A. Durbak DRAWN - A. Durbak CHECKED - A. Yargilooglu DATE - 8/2/2010 | REVISED - REVISED - REVISED - REVISED - | <p>MCHENRY COUNTY DIVISION OF TRANSPORTATION</p> | RAKOW ROAD FROM ACKMAN ROAD TO ILLINOIS ROUTE 31 BOX CULVERT OVER CRYSTAL CREEK STA 112+94.31 STRUCTURE NO. 056-3157 | | | F.A. RTE. 0336 SECTION 05-00308-00-WR COUNTY MCHENRY TOTAL SHEETS 606 SHEET NO. 416 | CONTRACT NO. |
| | SCALE: NONE SHEET NO. STR 14 OF 22 STA. TO STA. | | | | | FED. ROAD DIST. NO. ILLINOIS FED. AID PROJECT | | | |