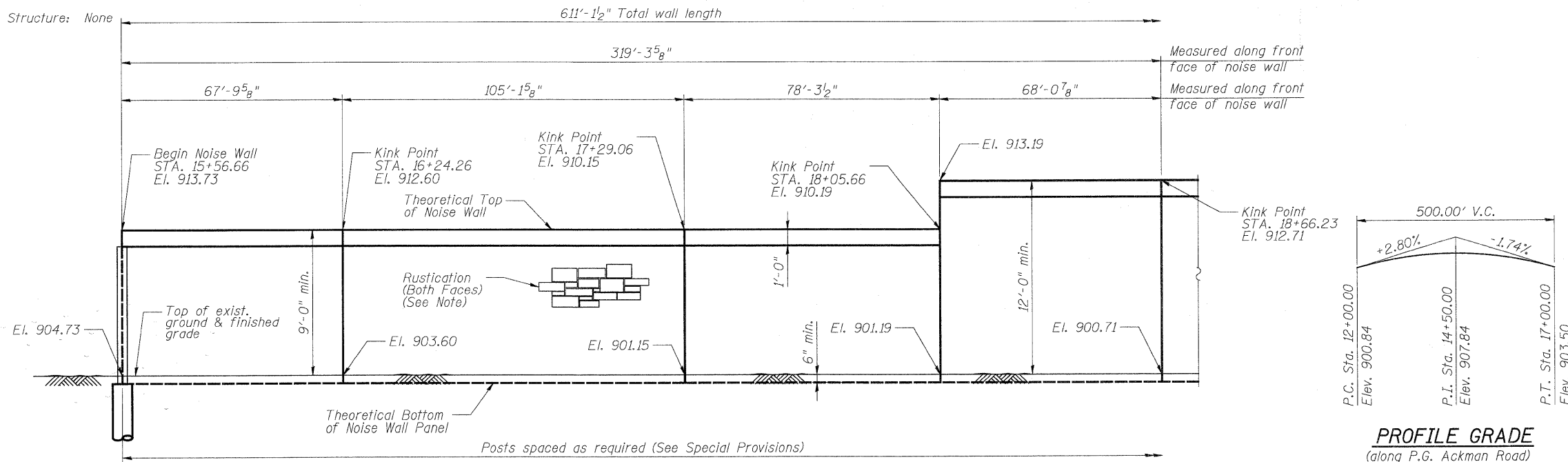


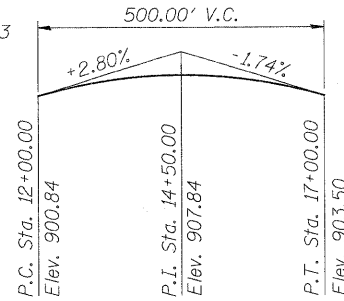
Benchmark: PEI 560-4' Rebar, Sta. 107+57.83, 73.72' LT, EL = 890.35

Existing Structure: None

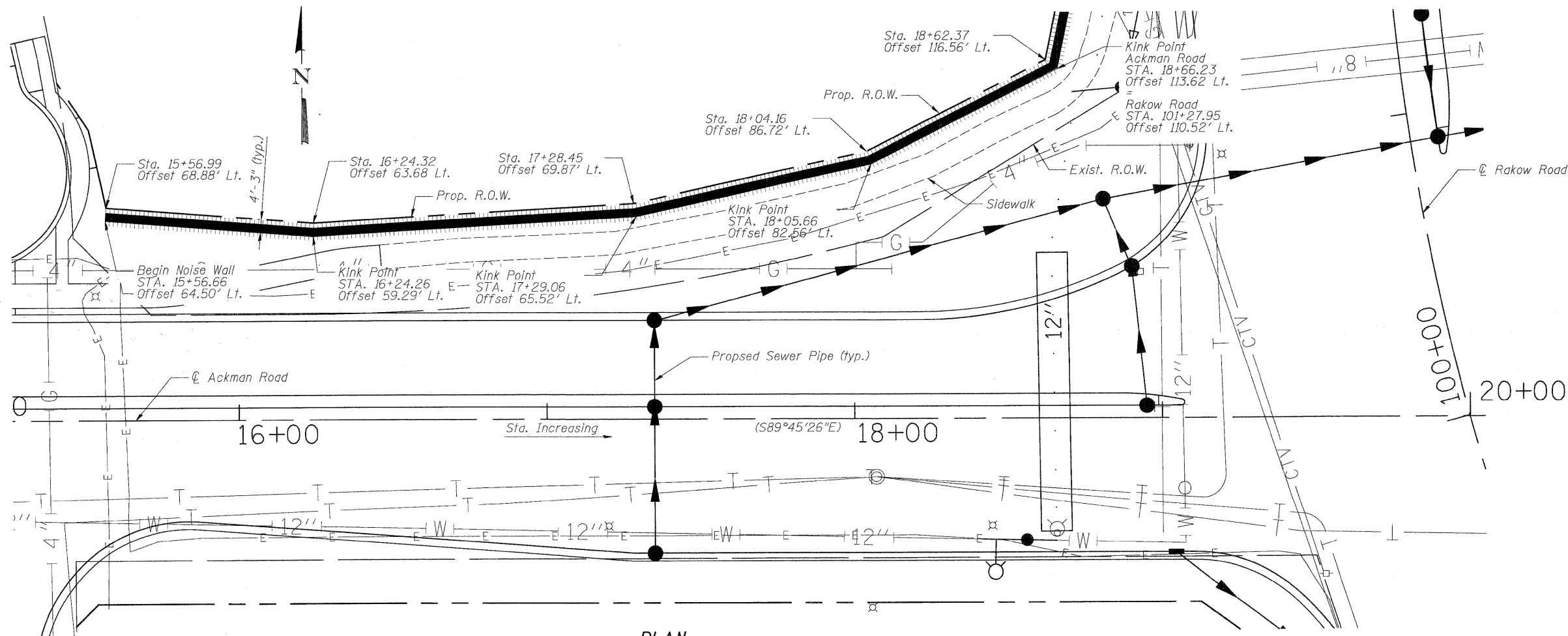


DEVELOPED ELEVATION

(Looking North)
(Stations along Ackman Road.)



PROFILE GRADE
(along P.G. Ackman Road)



PLAN

(Offsets measured to front face of wall.)
(Stations along Ackman Road.)

INDEX OF SHEETS

- STR 16. General Plan I
- STR 17. General Plan II
- STR 18. Details

HIGHWAY CLASSIFICATION

F.A.P. Rte. 0336 - Rakow Road
Functional Class: Strategic Regional Arterial
ADT: 16.5k-39.4k (2008); 29k-66k (2030)
DHV: 1030-3000
Design Speed: 45 mph
Posted Speed: 45 mph

F.A.U. Rte. 3873 - Ackman Road
Functional Class: Minor Arterial
ADT: 13.1k (2008); 22.2k (2030)
DHV: 1245
Design Speed: 40 mph
Posted Speed: 40 mph

LOADING

Wind Load on noise wall = 25 psf

DESIGN SPECIFICATIONS

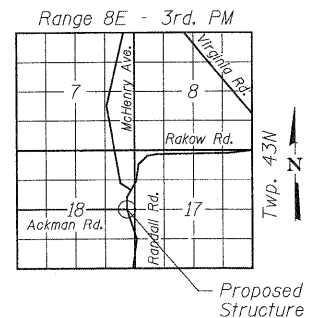
AASHTO 2002 Standard Specifications for Highway Bridges
AASHTO 1989 Guide Specifications for Structural Design of Sound Barriers and 1992 & 2002 Interims

DESIGN STRESSES

FIELD UNITS

- $f'_c = 3,500$ psi
- $f_y = 60,000$ psi (reinforcement)
- $f_y = 50,000$ psi (M270 Grade 50)

Note:
See Sheet STR 18 of 22 for typical section and Noise Abatement Wall Notes.



LOCATION SKETCH

LEGEND

- W — Water Line
- CTV — Cable TV Line
- T — Telephone Line
- G — Gas Line

GENERAL PLAN I

| | | | | | | | | |
|--|---|---|--|---|--|--|--|---|
| <p>PATRICK ENGINEERING INC. LISLE, ILLINOIS</p> | USER NAME = Rdwy_Lisle PLOT CONFIG = PDF(Greg_Large).plt PLOT SCALE = 1:28 PLOT DATE = 7/26/2010 | DESIGNED - A. Durbak DRAWN - A. Durbak CHECKED - A. Yargoglu DATE - 8/2/2010 | REVISED - REVISED - REVISED - REVISED - | <p>MCHENRY COUNTY DIVISION OF TRANSPORTATION</p> | <p>RAKOW ROAD FROM ACKMAN ROAD TO ILLINOIS ROUTE 31 NOISEWALL</p> | | | F.A. RTE. 0336 SECTION 05-00308-00-WR COUNTY MCHENRY TOTAL SHEETS 606 SHEET NO. 418 |
| | SCALE: NONE SHEET NO. STR 16 OF 22 STA. TO STA. | | | | CONTRACT NO. | | | |