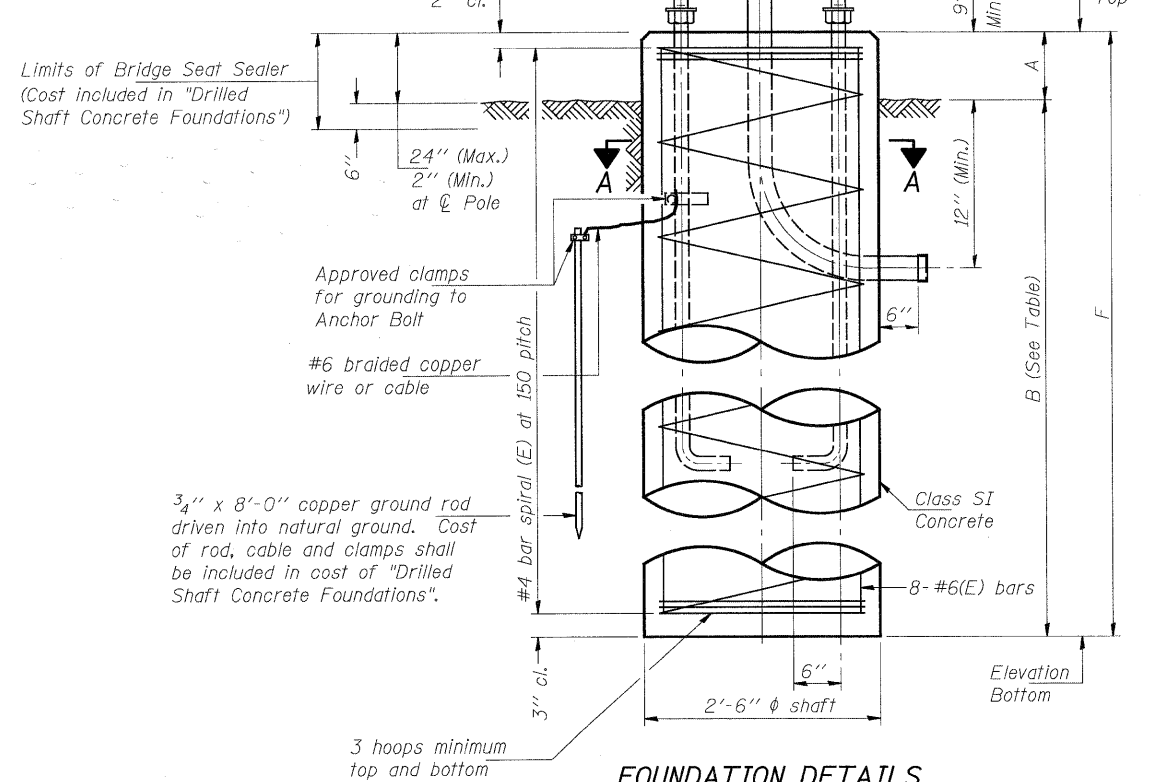


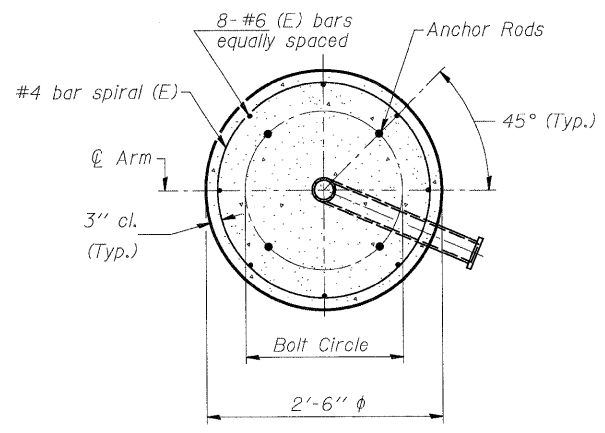
⊙ anchor rod. Thread upper 8". Galvanize upper 18" per AASHTO M232. Provide one hexagon locknut and washer (top) and one leveling nut and washer (bottom). Galvanize per AASHTO M232. Nuts shall each be tightened against base plate with 200 lb.-ft. torque.

⊙ 3" φ galvanized steel conduit. Thread and cap both ends.

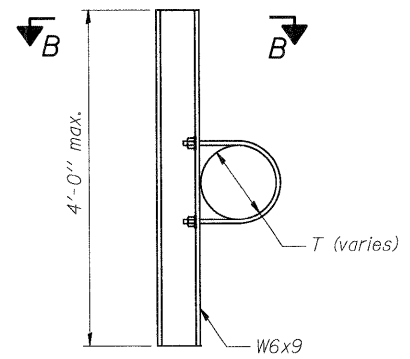


**FOUNDATION DETAILS**

Typical, except conduit may not be required. Provide conduit openings if required.

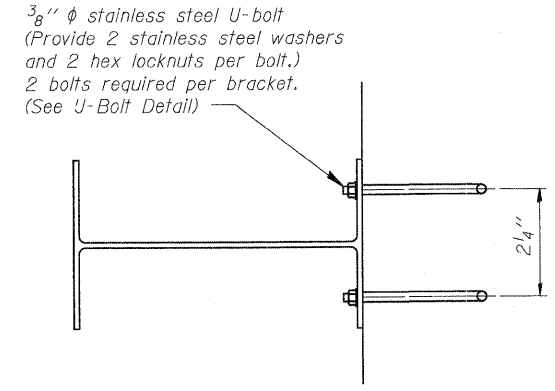


**SECTION A-A**



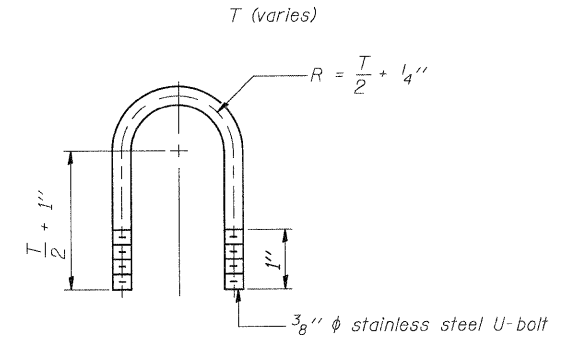
**SIGN MOUNTING BRACKET**

(Minimum 2 Brackets Each Sign)



**SECTION B-B**

6'-0" maximum spacing. 2'-0" maximum sign overhang beyond end bracket.



**U-BOLT DETAIL**

(Typical)

**FOUNDATIONS:**

The foundation dimensions shown are based on the presence of mostly cohesive soils with an average Unconfined Compressive Strength (Qu) of at least 1,500 psf, which must be determined by previous soil investigations at the jobsite. When other conditions are indicated, the boring data will be included in the plans and the foundation dimensions shown will be the result of site specific designs.

If the conditions encountered are different than those indicated, the Contractor shall notify the Engineer to determine if the foundation dimensions need to be modified. If dimensions "B" or "F" are revised by more than 12" by the Contractor, "as-built" plans shall be prepared and submitted to the District Bureau of Operations for future reference.

No sonotubes or decomposable forms shall be used below the lower conduit entrance. Permanent metal forms or other shielding may not be left in place below that elevation without the Engineer's written permission.

Concrete shall be placed monolithically, without construction joints.

Backfill shall be placed per Article 502 of Standard Specification and prior to erection of support column.

A normal surface finish followed by a Bridge Seat Sealer application will be required on concrete surfaces above the lowest elevation 6" below finished ground line. Cost included in "Drilled Shaft Concrete Foundation".

	USER NAME = Rdy_Lisle	DESIGNED - A. Yarglooglu	REVISED -		<b>RAKOW ROAD FROM ACKMAN ROAD TO ILLINOIS ROUTE 31</b> <b>OVERHEAD SIGN STRUCTURE- CANTILEVER MONOTUBE</b> <b>FOUNDATION AND SIGN BRACKETS</b>			F.A. RTE.	SECTION	COUNTY	TOTAL SHEETS	SHEET NO.
	PLOT CONFIG= PDFGrey.Large.plt	DRAWN - A. Yarglooglu	REVISED -					0336	05-00308-00-WR	MCHENRY	606	422
PLOT SCALE = 1:1	CHECKED - R. DiGiulio	REVISED -		SCALE: NONE			SHEET NO.	STR 20 OF 22	STA.	TO STA.	FED. ROAD DIST. NO. [ILLINOIS] FED. AID PROJECT	
PLOT DATE = 7/28/2010	DATE - 8/2/2010	REVISED -									CONTRACT NO.	