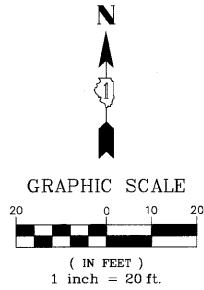
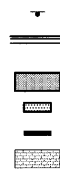


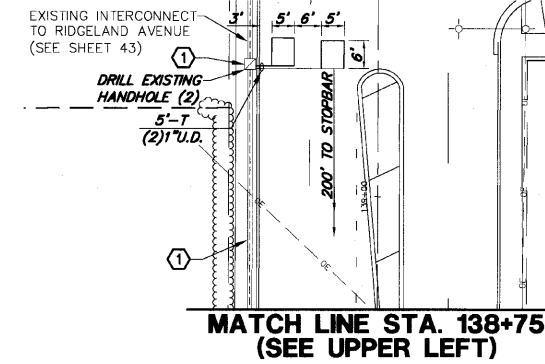
LEGEND

- STREET NAME SIGN
- COMBINATION CONCRETE CURB & GUTTER, TYPE B-6.12 OR TYPE B-6.24
- PORTLAND CEMENT CONCRETE SIDEWALK, 5"
- DETECTABLE WARNING
- LED ILLUMINATED STREET NAME SIGN
- BRICK PAVEMENT REINSTALLATION

PROPOSED



**MATCH LINE STA. 138+75
(SEE RIGHT)**



Restoration of Work Area. Restoration of the traffic signal work area shall be incidental to the related pay items such as foundation, conduit, handhole, trench and backfill, etc., and no extra compensation shall be allowed. All roadway surfaces such as shoulders, medians, sidewalks, pavement, etc. shall be replaced in kind. All damage to mowed lawns shall be replaced with an approved sod, and all damage to unmowed fields shall be seeded in accordance with Standard Specifications 252 and 250 respectively.

**MATCH LINE STA. 138+75
(SEE UPPER LEFT)**

**MATCH LINE STA. 135+00
(SEE LOWER LEFT)**

THE TRAFFIC SIGNAL CONTROL EQUIPMENT FOR THIS PROJECT SHALL BE "NTCIP" COMPLIANT.

NOTE: THE LUMINAIRE ARM SHALL BE TWENTY (20) FEET IN LENGTH.

ITEM	STATION	OFFSET	POSSIBLE UTILITY CONFLICT
H-1	187+8.4	1.3' RT	
H-2	184+75.2	27.7' RT	
H-3	187+24.7	175.7' RT	
H-4	187+57.0	46.5' RT	
H-5	187+81.6	289.5' RT	
H-6	187+85.8	37.8' RT	
H-7	188+5.4	0.1' LT	
H-8	190+9.4	27.6' LT	
H-9	187+97.3	27.7' LT	
H-10	187+57.7	56.7' LT	
P-1	187+25.7	53.3' LT	BUILDING
P-2	187+17.2	31.8' RT	
P-3	187+88.7	37.8' RT	R.O.W.
P-4	187+96.5	31.8' LT	
MA-1	187+13.2	38.8' LT	R.O.W.
MA-2	187+24.3	42.0' RT	OVERHEAD CABLES
MA-3	187+98.6	31.6' RT	
MA-4	187+89.3	49.4' LT	HYDRANT, WATER MAIN

CONSTRUCTION NOTES:

- 1 THE EXISTING DOUBLE HANDHOLE, HANDHOLE, CONDUIT, CONDUIT STUBS, AND FIBER OPTIC CABLE WITH TRACER HAVE BEEN INSTALLED AS PART OF THE LEWIS AVENUE TRAFFIC SIGNAL MODERNIZATION AND FIBER OPTIC COMMUNICATION SYSTEM-CONTRACT #63344.
- 2 THE CITY OF WAUKEGAN SHALL REMOVE EXISTING STREET LIGHT, POLE, AND ASSOCIATED OVERHEAD CABLES.
- 3 THE CONTRACTOR SHALL INSTALL (2)2" CONDUIT WITH THREADED CAP FOR FUTURE CITY OF WAUKEGAN ROADWAY LIGHTING PROJECT. THE CONDUITS SHALL BE INSTALLED WITH ONE STUBBED TO THE EAST AND THE OTHER STUBBED TO THE WEST. BOTH TYPE E FOUNDATIONS ARE LOCATED ON THE NORTHWEST AND SOUTHEAST CORNERS (TYPICAL). THE COST OF THE 2 STUBS SHALL BE INCLUDED IN THE PRICE OF THE CONCRETE FOUNDATION, TYPE E, 36-INCH DIAMETER.
- 4 ALL EXISTING REGULATORY SIGNS, WARNING SIGNS, AND INFORMATIONAL SIGNS THAT HAVE BEEN RELOCATED TO THE TEMPORARY TRAFFIC SIGNALS SHALL BE RELOCATED SECURELY TO THE PERMANENT TRAFFIC SIGNAL MAST ARM POLE OR POST AS DIRECTED BY THE ENGINEER. THE COST FOR THE RELOCATION OF THE EXISTING SIGNS SHALL BE INCLUDED IN THE PRICE FOR TRAFFIC CONTROL AND PROTECTION (SPECIAL).

**MATCH LINE STA. 135+00
(SEE RIGHT)**

FILE NAME = 4136.800-TR2.dwg

USER NAME = GHA
 DESIGNED - JRD
 DRAWN - ZCW
 CHECKED - DPB
 DATE - 3/10/10

REVISIONS:
 REVISED -
 REVISED -
 REVISED -
 REVISED -



TRAFFIC SIGNAL MODERNIZATION PLAN
GRAND AVENUE AT LEWIS AVENUE
 SCALE: 1"=20'
 SHEET NO. OF SHEETS STA. TO STA.

F&P R.T.E. SECTION COUNTY TOTAL SHEETS SHEET NO.
 541 08-00279-00-TL LAKE 64 23
 CONTRACT # 63436
 ILLINOIS FED. AID PROJECT

GHA #4136.800