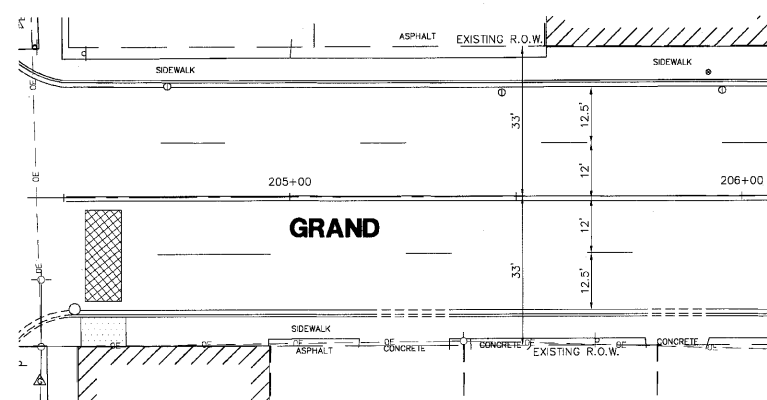


**TEMPORARY VIDEO DETECTION CAMERA MOUNTING DETAIL**  
N.T.S.



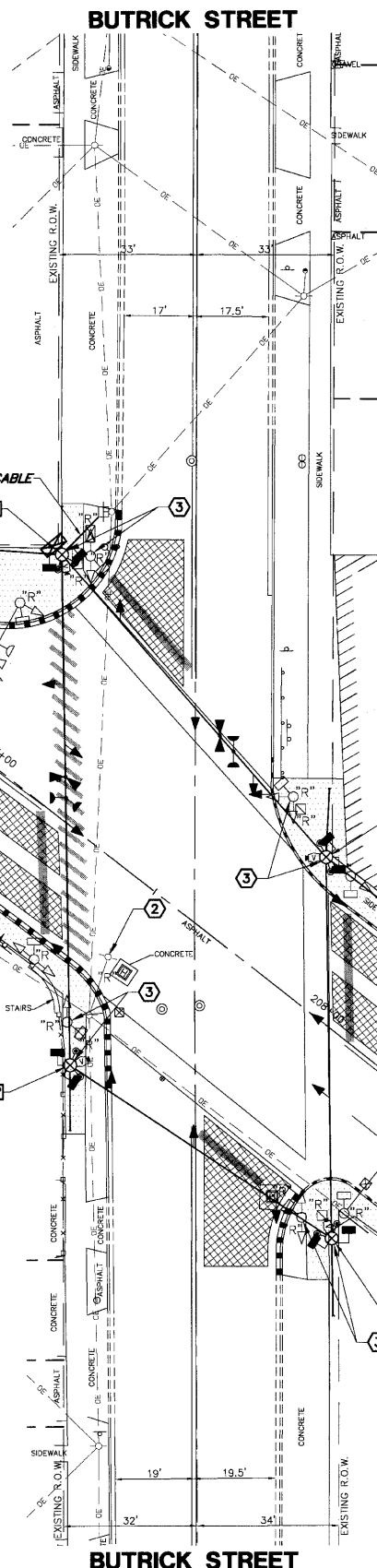
**CONSTRUCTION NOTES:**

- ① THE EXISTING 40 FOOT WOOD POWER POLE TO BE REMOVED AND REPLACED WITH A 65 FOOT WOOD POWER POLE BY COMMONWEALTH EDISON PRIOR TO INSTALLATION OF THE TEMPORARY TRAFFIC SIGNAL.
- ② THE EXISTING STREET LIGHT TO BE REMOVED BY COMMONWEALTH EDISON PRIOR TO INSTALLATION OF THE TEMPORARY TRAFFIC SIGNAL.
- ③ RELOCATE EXISTING "NO TURN ON RED" SIGN TO TEMPORARY WOOD POLE.

ITEM	STATION	OFFSET	POSSIBLE UTILITY CONFLICT
WP-1	206+82.3	49.9' LT	OVERHEAD CABLES
WP-2	207+59.6	45.4' RT	OVERHEAD CABLES
WP-3	208+34.6	39.4' RT	OVERHEAD CABLES
WP-4	207+77.2	31.8' LT	

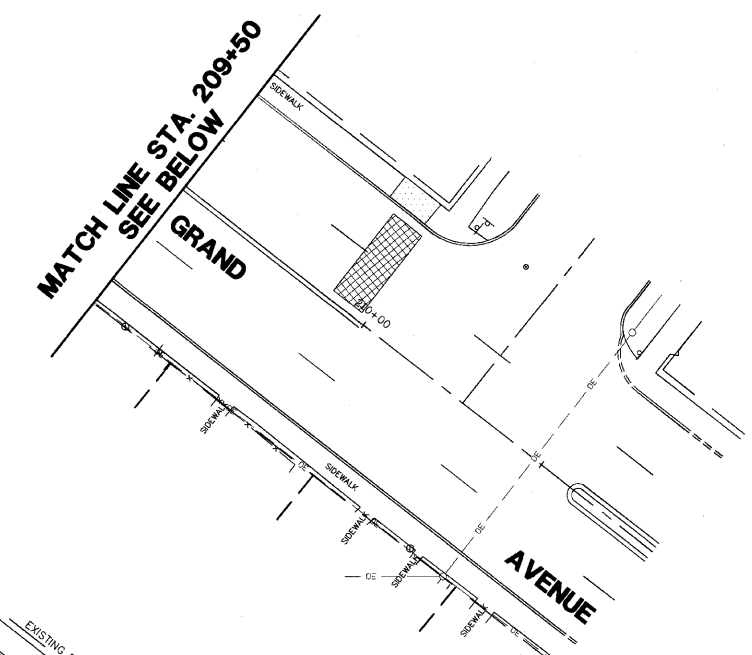
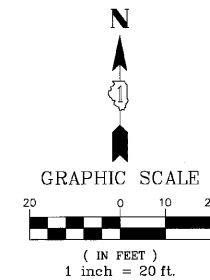
THE FOLLOWING ITEMS SHALL BE REMOVED BY THE CONTRACTOR AND SHALL BE DISPOSED OF BY THEM OUTSIDE THE RIGHT-OF-WAY AT THEIR EXPENSE. THE SALVAGE VALUE OF THE REMOVED EQUIPMENT SHALL BE REFLECTED IN THE CONTRACT BID PRICE.

- 1 EACH CABINET AND CONTROLLER (COMPLETE)
- 13 EACH SIGNAL HEAD, 3-SECTION
- 8 EACH PEDESTRIAN SIGNAL HEAD
- 8 EACH PEDESTRIAN PUSH BUTTON
- 2 EACH STEEL MAST ARM ASSEMBLY AND POLE
- 6 EACH TRAFFIC SIGNAL POST
- 1 EACH SERVICE INSTALLATION



**NOTES FOR TEMPORARY TRAFFIC SIGNALS**

- 1. ALL CONTROL EQUIPMENT INCLUDING EMERGENCY PRE-EMPTION AND COMMUNICATION DEVICES FOR THE TEMPORARY TRAFFIC SIGNAL(S) SHALL BE FURNISHED BY THE CONTRACTOR.
- 2. ONLY ECONOLITE CONTROLLERS SUPPLIED BY ONE OF THE COUNTY APPROVED CLOSED LOOP EQUIPMENT MANUFACTURERS WILL BE APPROVED FOR USE AT TEMPORARY SIGNAL LOCATIONS. ALL CONTROLLERS USED FOR TEMPORARY TRAFFIC SIGNALS SHALL BE FULLY ACTUATED NEMA MICROPROCESSOR BASED WITH RS232 DATA ENTRY PORTS COMPATIBLE WITH EXISTING MONITORING SOFTWARE APPROVED BY THE COUNTY, INSTALLED IN A NEMA TS1 OR TS2 CABINET.
- 3. ALL TRAFFIC SIGNAL SECTIONS AND PEDESTRIAN SIGNAL SECTIONS SHALL BE 12". HEADS SHALL BE PLACED AS INDICATED ON THE TEMPORARY TRAFFIC SIGNAL PLAN OR AS DIRECTED BY THE ENGINEER. THE CONTRACTOR SHALL FURNISH ENOUGH CABLE SLACK TO RELOCATE HEADS TO ANY POSITION ON THE SPAN WIRE OR AT LOCATIONS ILLUSTRATED ON THE PLANS FOR CONSTRUCTION STAGING. THE TEMPORARY TRAFFIC SIGNAL SHALL REMAIN IN OPERATION DURING ALL SIGNAL HEAD RELOCATIONS. EACH TEMPORARY TRAFFIC SIGNAL HEAD SHALL HAVE ITS OWN CABLE FROM THE CONTROLLER CABINET TO THE SIGNAL HEAD.
- 4. ALL EXISTING STREET NAME, INTERSECTION REGULATORY SIGNS SHALL BE REMOVED FROM EXISTING POLES, RELOCATED AND SECURELY FASTENED TO THE SIGNAL SPAN WIRE OR WOOD POLE AS DIRECTED BY THE ENGINEER.
- 5. ANY TEMPORARY SIGNAL WITHIN AN EXISTING CLOSED LOOP TRAFFIC SIGNAL SYSTEM SHALL BE INTERCONNECTED TO THAT SYSTEM. ANY TEMPORARY TRAFFIC SIGNAL WITHIN AN ICON SYSTEM SHALL BE NTCIP COMPATIBLE AND SHALL BE INTERCONNECTED TO THAT SYSTEM.
- 6. IF NO TRAFFIC STAGING IS IN PLACE OR WILL NOT BE STAGED ON THE DAY OF THE TURN-ON, THE TEMPORARY TRAFFIC SIGNAL SHALL HAVE THE SIGNAL HEAD DISPLAYS, SIGNAL HEAD PLACEMENTS, AND CONTROLLER PHASING MATCH THE EXISTING TRAFFIC SIGNAL AT THE TIME OF THE TURN-ON.
- 7. THE CONTRACTOR SHALL RELOCATE THE TEMPORARY SIGNAL HEADS THROUGHOUT CONSTRUCTION TO LINE UP APPROXIMATELY WITH THE CORRESPONDING LANES FOR EACH STAGE OF CONSTRUCTION.
- 8. THE DETECTION ZONES SHALL BE APPROVED BY LAKE COUNTY DIVISION OF TRANSPORTATION PERSONNEL.



**LEGEND**

- EXISTING
- STREET NAME SIGN
- COMBINATION CONCRETE CURB & GUTTER REMOVAL
- SIDEWALK REMOVAL
- BRICK PAVER REMOVAL

GHA #4136.800

FILE NAME = 4136.800-TR2.dwg	USER NAME = GHA	DESIGNED - JRD	REVISED -	<p><b>Lake County</b> Division of Transportation</p>	<p><b>TEMPORARY TRAFFIC SIGNAL INSTALLATION AND REMOVAL OF EXISTING TRAFFIC SIGNAL EQUIPMENT GRAND AVENUE AT BUTTRICK STREET</b></p>	F&P R/E 541	SECTION 08-00279-00-TL	COUNTY LAKE	TOTAL SHEETS 64	SHEET NO. 25		
	PLOT SCALE = 1" = .0833'	DRAWN - ZCW	REVISED -			SCALE: 1"=20'	SHEET NO. OF SHEETS	STA. TO STA.	ILLINOIS FED. AID PROJECT			
	PLOT DATE = 3/10/10	CHECKED - DPB	REVISED -									
		DATE - 3/10/10	REVISED -									