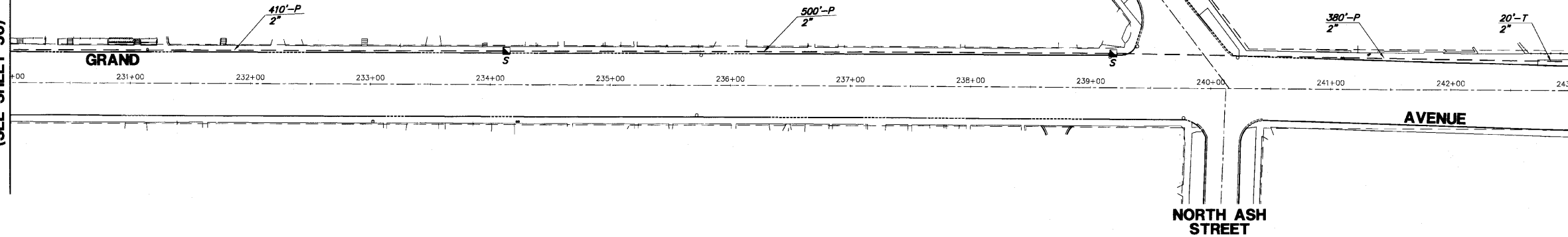


MATCHLINE STA. 230+00
(SEE SHEET 50)

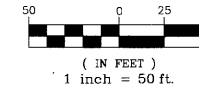


MATCHLINE STA. 243+00
(SEE LOWER LEFT)

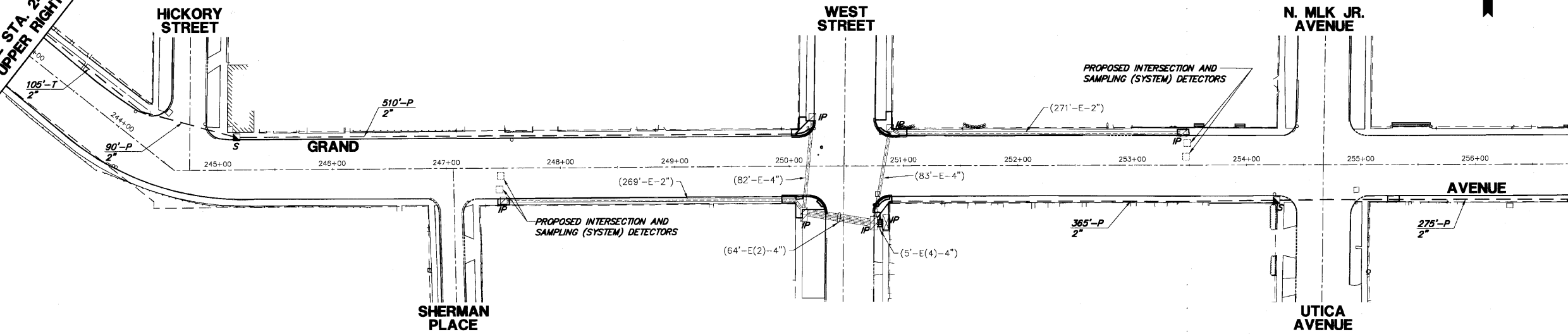
INTERCONNECT PLAN LEGEND

| | PROPOSED | EXISTING |
|---|------------|------------|
| CONTROLLER CABINET | | |
| VIDEO COMMUNICATIONS CABINET | | |
| HANDHOLE | | |
| DOUBLE HANDHOLE | | |
| HEAVY-DUTY HANDHOLE | | |
| G.S. CONDUIT IN TRENCH (T) OR PUSHED (P) | | |
| DETECTOR LOOP | | |
| SYSTEM | <i>S</i> | <i>S</i> |
| INTERSECTION | <i>IP</i> | <i>I</i> |
| COILABLE NONMETAL CONDUIT | <i>CNC</i> | <i>CNC</i> |

GRAPHIC SCALE



MATCHLINE STA. 243+00
(SEE UPPER RIGHT)



MATCHLINE STA. 257+00
(SEE SHEET 52)

GHA #4136.800

| | | | |
|---------------------------------|--------------------------|----------------|-----------|
| FILE NAME = 4136.800-TR2.dwg | USER NAME = GHA | DESIGNED - JRD | REVISED - |
| | PLOT SCALE = 1" = .0833' | DRAWN - ZCW | REVISED - |
| | PLOT DATE = 3/10/10 | CHECKED - DPB | REVISED - |
| | | DATE - 3/10/10 | REVISED - |



| | |
|---|-------------------------|
| INTERCONNECT PLAN (SHEET 5 OF 6) | |
| SCALE: 1"=50' | SHEET NO. 5 OF 6 SHEETS |
| STA. 230+00 | TO STA. 257+00 |

| F&P RTE | SECTION | COUNTY | TOTAL SHEETS | SHEET NO. |
|---------------------------|----------------|--------|-----------------|--------------|
| 541 | 08-00279-00-TL | LAKE | 64 | 51 |
| CONTRACT #: | | | 63436 | |
| ILLINOIS FED. AID PROJECT | | | | |