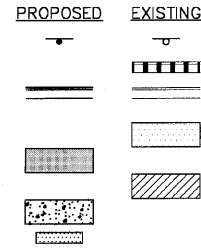


**TRAFFIC SIGNAL LEGEND**

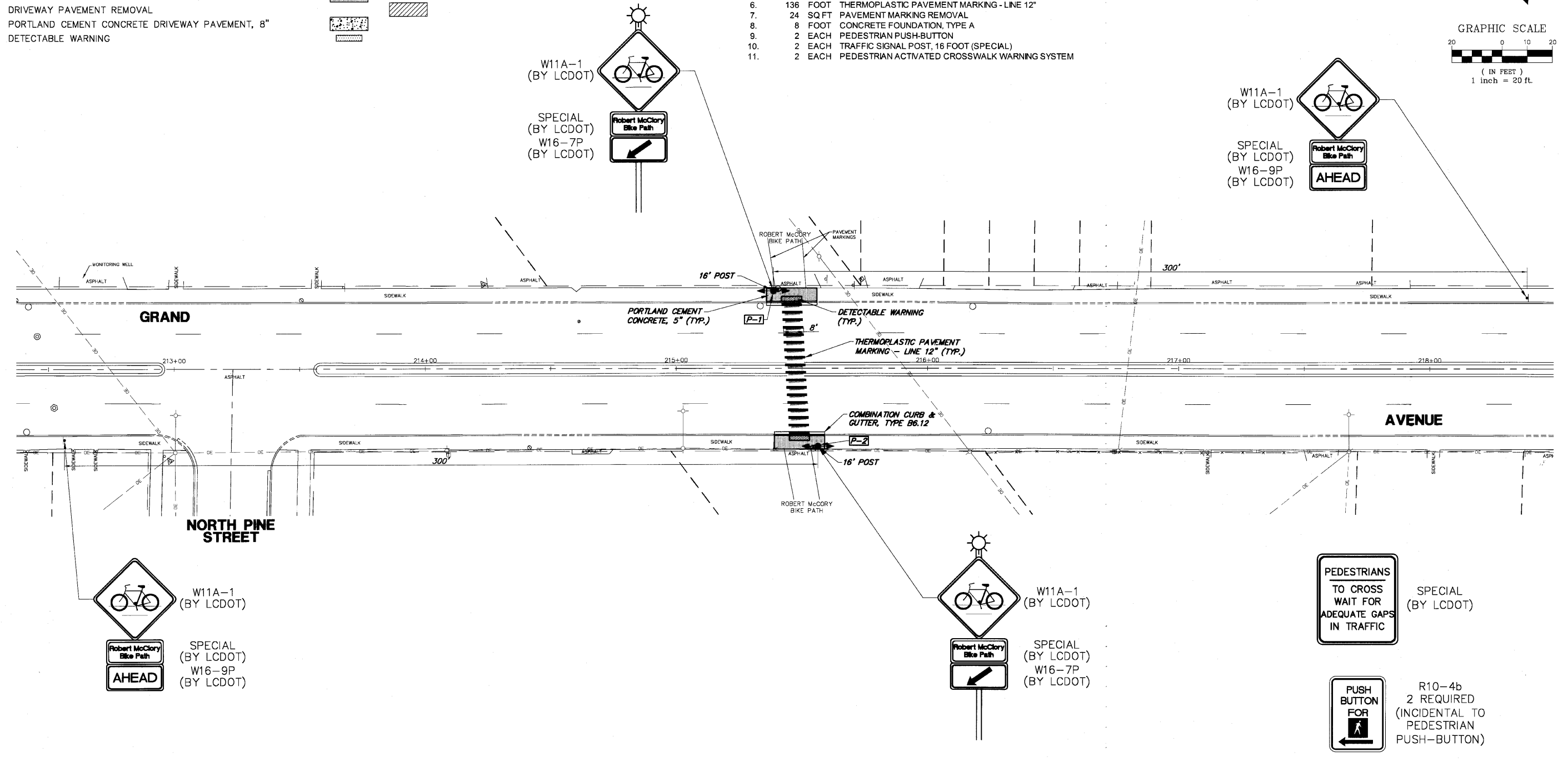
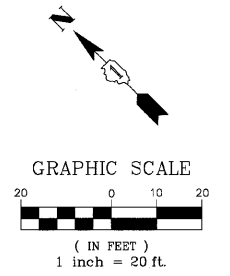
- STREET NAME SIGN
- COMBINATION CURB AND GUTTER REMOVAL
- COMBINATION CONCRETE CURB & GUTTER, TYPE B-6.12 OR TYPE B-6.24
- SIDEWALK REMOVAL
- PORTLAND CEMENT CONCRETE SIDEWALK, 5"
- DRIVEWAY PAVEMENT REMOVAL
- PORTLAND CEMENT CONCRETE DRIVEWAY PAVEMENT, 8"
- DETECTABLE WARNING



**SCHEDULE OF QUANTITIES**

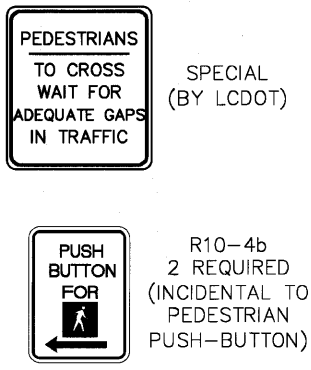
GRAND AVE AT ROBERT McCLORY BIKE PATH MID-BLOCK PEDESTRIAN CROSSING

NO.	QUANT.	UNIT	DESCRIPTION
1.	200	SQ FT	PORTLAND CEMENT CONCRETE SIDEWALK 5 INCH
2.	32	SQ FT	DETECTABLE WARNINGS
3.	40	FOOT	COMBINATION CURB AND GUTTER REMOVAL
4.	200	SQ FT	SIDEWALK REMOVAL
5.	40	FOOT	COMBINATION CONCRETE CURB AND GUTTER, TYPE B-6.12
6.	136	FOOT	THERMOPLASTIC PAVEMENT MARKING - LINE 12"
7.	24	SQ FT	PAVEMENT MARKING REMOVAL
8.	8	FOOT	CONCRETE FOUNDATION, TYPE A
9.	2	EACH	PEDESTRIAN PUSH-BUTTON
10.	2	EACH	TRAFFIC SIGNAL POST, 16 FOOT (SPECIAL)
11.	2	EACH	PEDESTRIAN ACTIVATED CROSSWALK WARNING SYSTEM



ITEM	STATION	OFFSET	POSSIBLE UTILITY CONFLICT
P-1	215+38.7	30.8' LT	
P-2	215+56.4	31.1' RT	

THE TRAFFIC SIGNAL CONTROL EQUIPMENT FOR THIS PROJECT SHALL BE "NTCIP" COMPLIANT.



FILE NAME = 4136.800-TR2.dwg	USER NAME = GHA	DESIGNED - JRD	REVISED -		<b>MID-BLOCK PEDESTRIAN CROSSING</b> <b>GRAND AVENUE AT ROBERT McCLORY BIKE PATH</b>	F&P RTE 541	SECTION 08-00279-00-TL	COUNTY LAKE	TOTAL SHEETS 64	SHEET NO. 55	
	PLOT SCALE = 1" = .0833'	DRAWN - ZCW	REVISED -		SCALE: 1" = 20'	SHEET NO. OF SHEETS	STA.	TO STA.	CONTRACT #: 63436		
	PLOT DATE = 3/10/10	CHECKED - DPB	REVISED -						ILLINOIS FED. AID PROJECT		
		DATE - 3/10/10	REVISED -								

GHA #4136.800