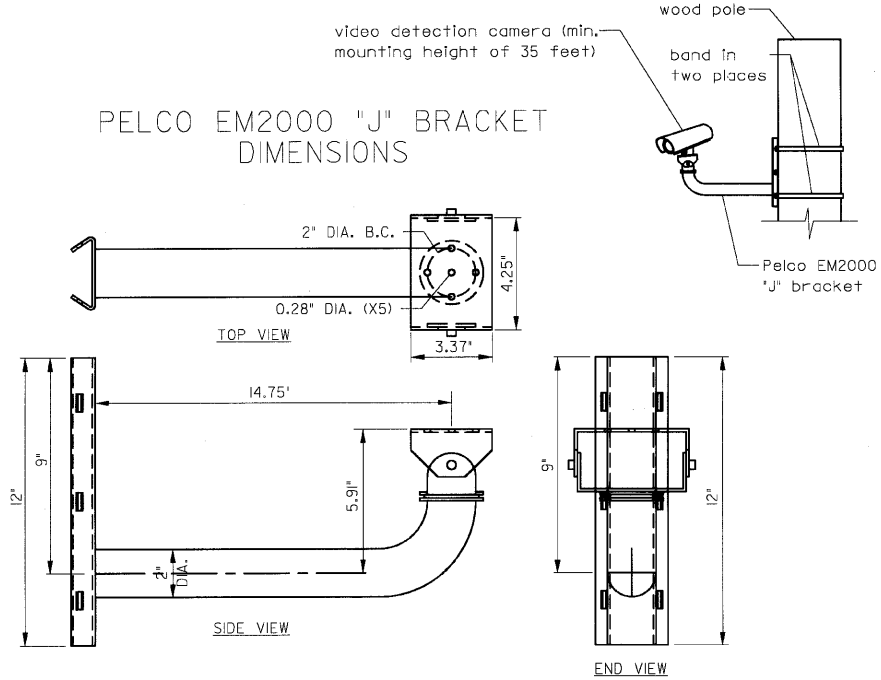


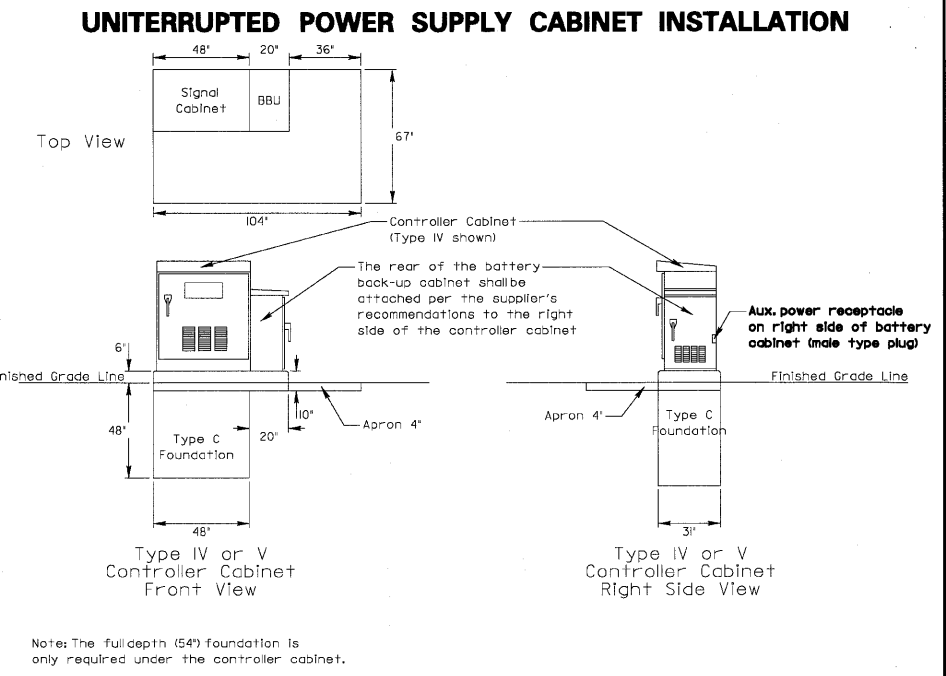
VIDEO DETECTION CAMERA(S) AND DOME (PTZ) CAMERA MOUNTING DETAIL
(NOT TO SCALE)

NOTES FOR SINGLE, DUAL AND MULTIPLE MYP MOUNTING:
 - MOUNT LUMINAIRE MOUNTING BRACKET AS HIGH AS POSSIBLE.
 - AIM BRACKET TOWARD DIRECTION OF TRAFFIC TO BE DETECTED.
 - MOUNT MACHINE VISION PROCESSOR AIMING DOWN AT 30 DEGREE ANGLE.

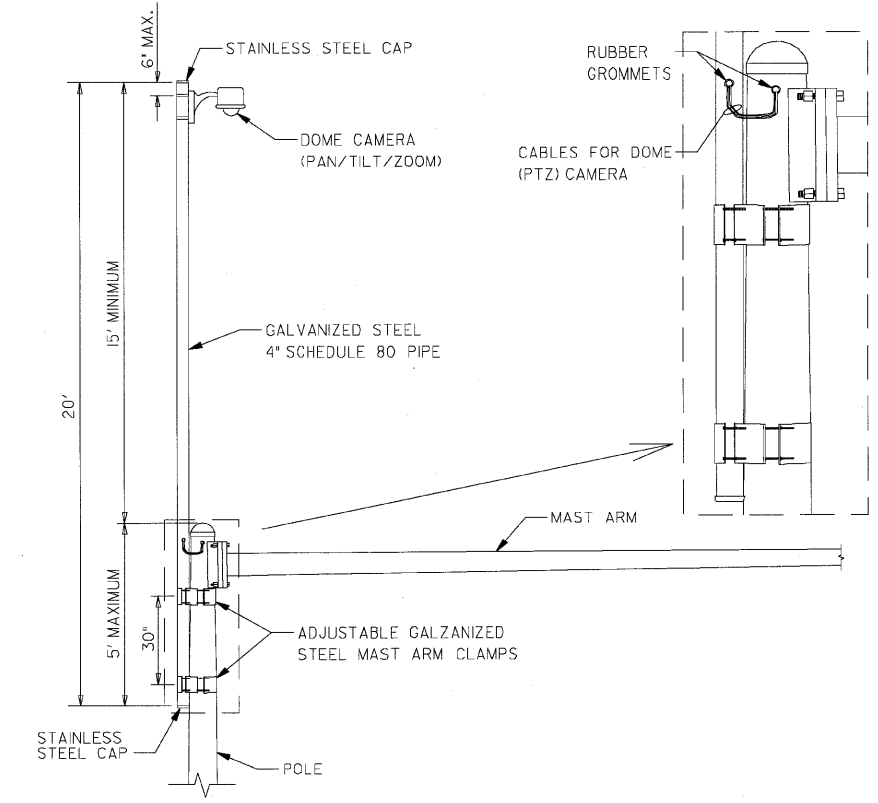


PELCO EM2000 "J" BRACKET DIMENSIONS

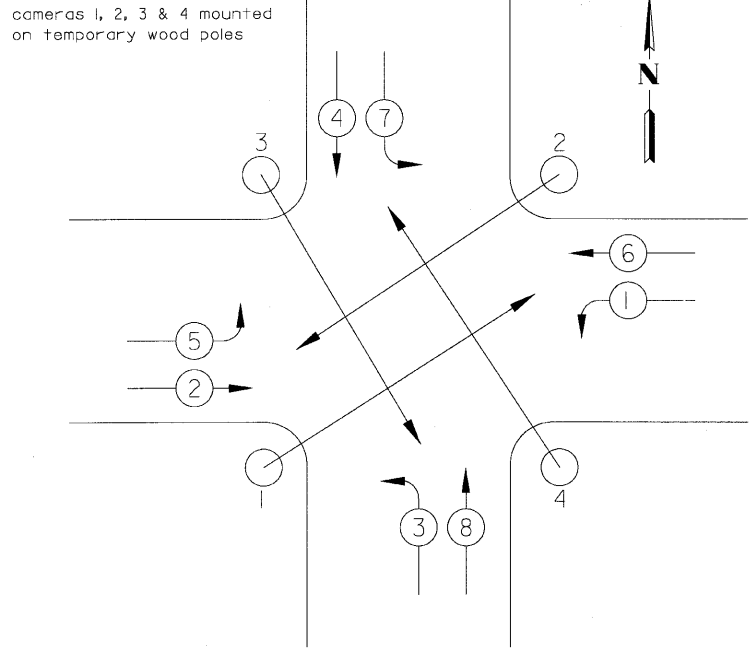
VIDEO DETECTION CAMERA MOUNTING DETAIL FOR TEMPORARY TRAFFIC SIGNALS
(NOT TO SCALE)



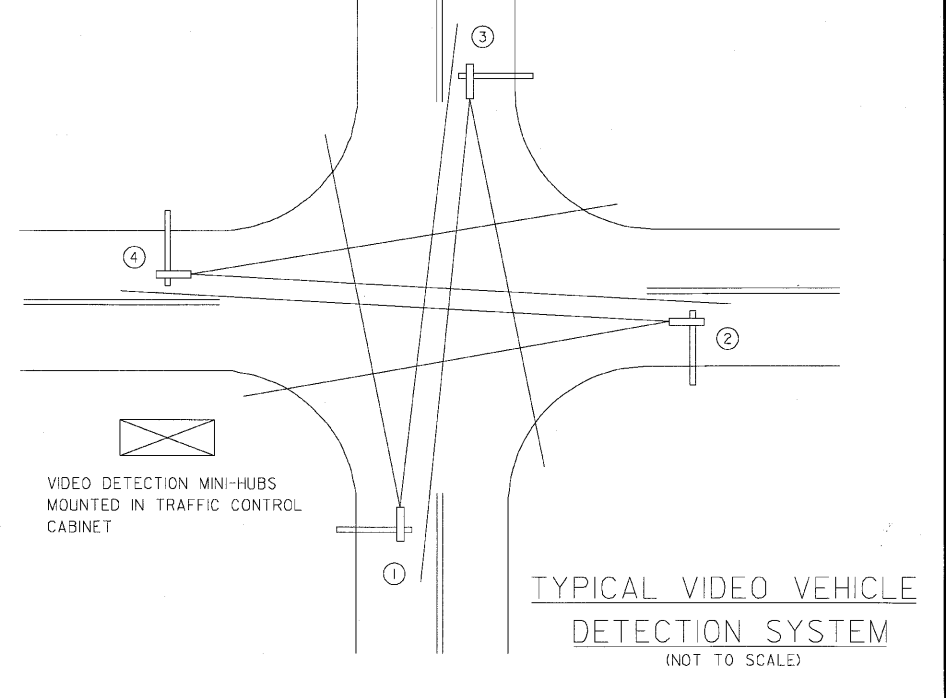
Note: The full depth (54") foundation is only required under the controller cabinet.



CAMERA MOUNTING ASSEMBLY DETAIL
(NOT TO SCALE)



VIDEO DETECTION CAMERA ASSIGNMENT FOR TEMPORARY TRAFFIC SIGNALS
(NOT TO SCALE)



(4) MACHINE VISION PROCESSOR ASSEMBLIES AND BRACKETS
 ① ② ③ ④ POWER CABLE TO EACH MACHINE VISION PROCESSOR (24 VAC)

FILE NAME = 4136.800-TR2.dwg

USER NAME = GHA
 PLOT SCALE = 1" = .0833'
 PLOT DATE = 3/10/10

DESIGNED - JRD
 DRAWN - ZCW
 CHECKED - DPB
 DATE - 3/10/10

REVISED -
 REVISED -
 REVISED -
 REVISED -



LCDOT VIDEO DETECTION DETAILS
 SCALE: NONE SHEET NO. OF SHEETS STA. TO STA.

REVISIONS	
NAME	DATE
2nd Camera Locat. Added	1/14/09

Lake County Division of Transportation				
STANDARD TRAFFIC SIGNAL DESIGN DETAILS				
SCALE: N.T.S. DESIGNED BY: JPS				
DATE: 05/20/05 CHECKED BY: ANK				
GHA #4136.800				
FAP RTE	SECTION	COUNTY	TOTAL SHEETS	SHEET NO.
541	08-00279-00-TL	LAKE	64	60
CONTRACT #: 63436				
ILLINOIS FED. AID PROJECT				