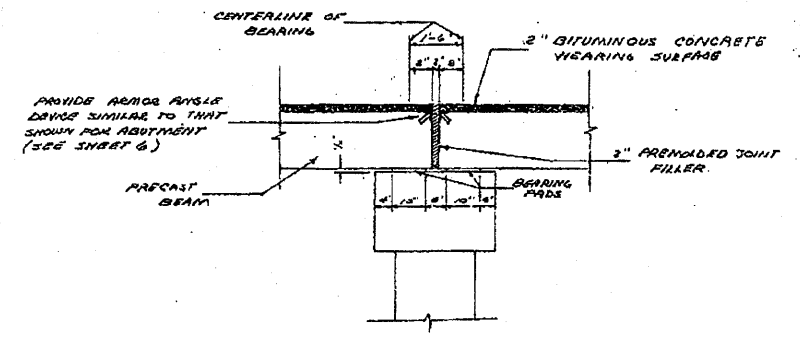
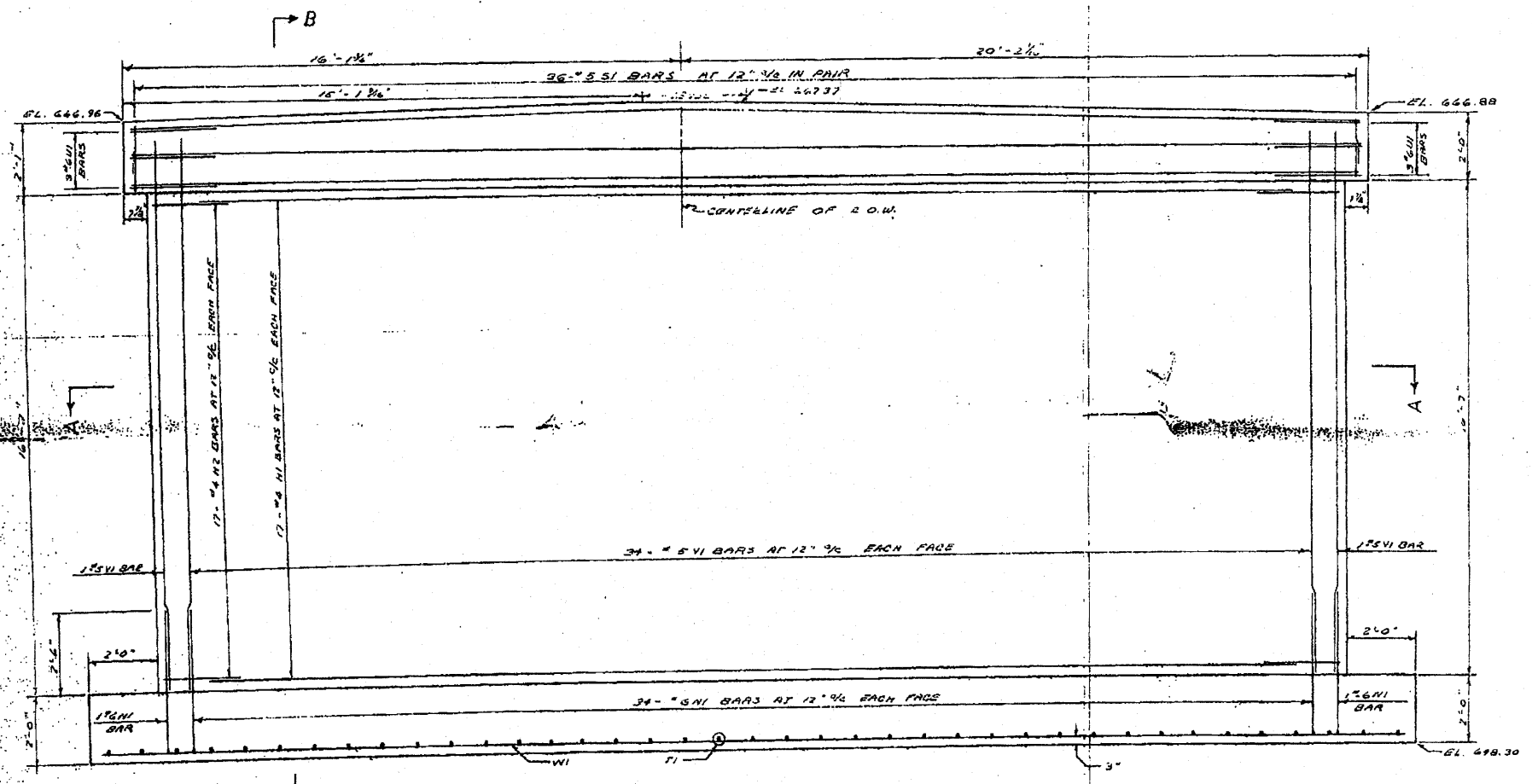


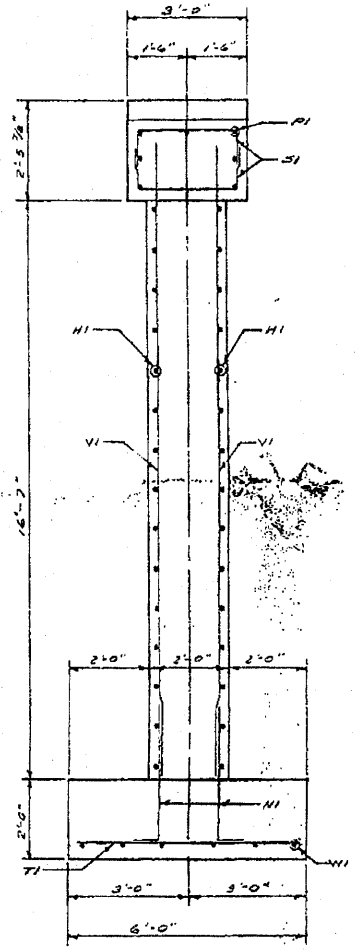
TOP PLAN



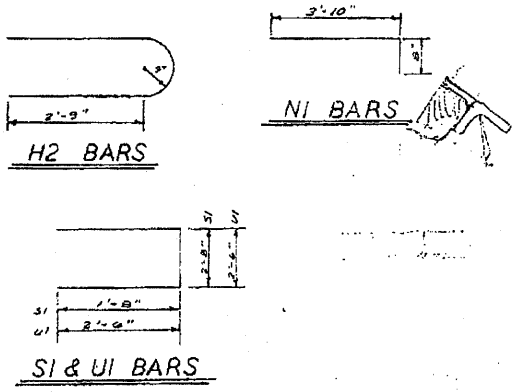
DETAIL OF EXPANSION JOINT AT PIER



ELEVATION

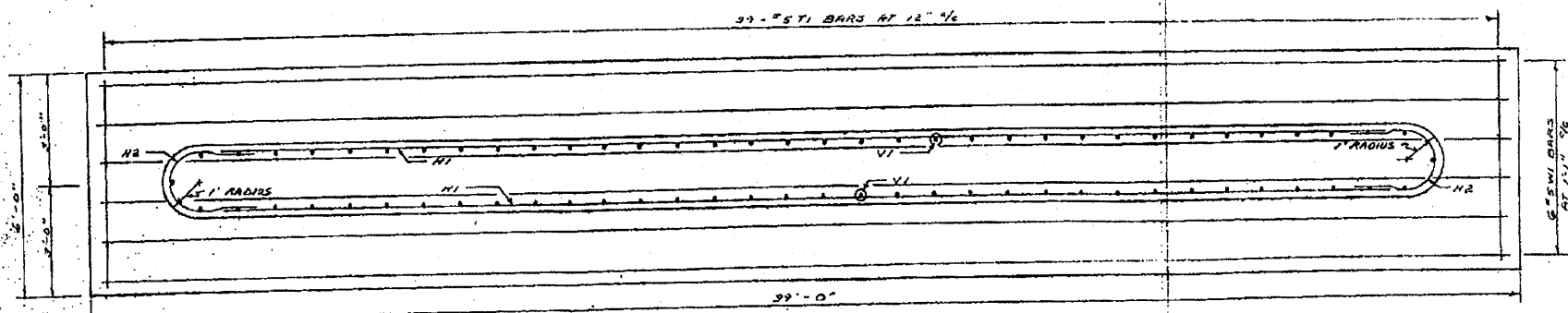


SECTION B-B

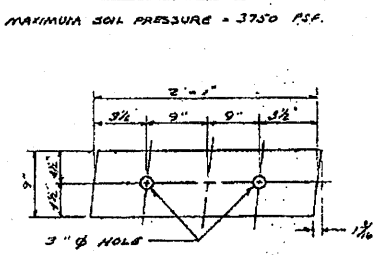


BILL OF REINFORCEMENT				
BAR	NO.	SIZE	LENGTH	SHAPE
H1	34	4	32'-0"	U
H2	34	4	7'-9"	U
NI	70	6	4'-6"	U
PI	7	6	35'-6"	U
SI	72	5	6'-0"	U
TI	39	5	5'-8"	U
UI	6	6	7'-6"	U
VI	70	5	18'-0"	U
WI	6	5	38'-4"	U

PIER QUANTITIES	
CLASS X CONCRETE	67.6 CU. YDS.
REINFORCEMENT BARS	4010 LBS.



SECTION A-A



BEARING PAD DETAIL

NOTE!
USE 1/4" ASBESTOS PADS WITH ONE GRAPHITE IMPREGNATED SURFACE. TWO PADS SHALL BE USED AT EACH BEARING LOCATION - AT THE EXPANSION JOINTS THE GRAPHITED SURFACES OF EACH PAD SHALL CONTACT EACH OTHER - AT THE FIXED JOINTS (ABUTMENTS) THE GRAPHITED SURFACES OF EACH PAD SHALL NOT CONTACT EACH OTHER.

PIER		
SCALE: 1/2" = 1'	APPROVED BY:	DRAWN BY: DO
DATE: 11-8-73		REVISED:
BARONECKI - VIRGILIO & ASSOCIATES 72 NORTH BROADWAY DES PLAINES, ILLINOIS		
SHEET 3 OF 6		DRAWING NUMBER 56 E - B

Added 10-13-10 Sheet 48