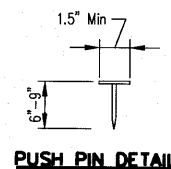
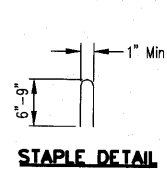


DETAIL 1

DETAIL 2

DETAIL 3



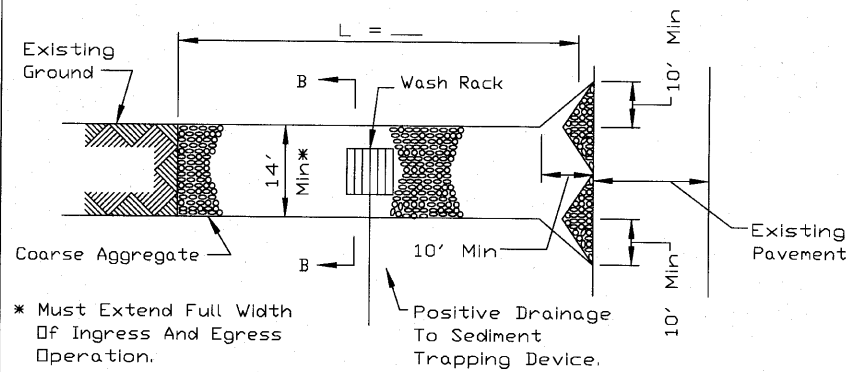
NOTES:

1. Staples shall be placed in a diamond pattern at 2 per s.y. for stiched blankets. Non-stiched shall use 4 staples per s.y. of material. This equates to 200 staples with stiched blanket and 400 staples with non-stiched blanket per 100 s.y. of material.
2. Staple or push pin lengths shall be selected based on soil type and conditions. (minimum staple length is 6")
3. Erosion control material shall be placed in contact with the soil over a prepared seedbed.
4. All anchor slots shall be stapled at approximately 12" intervals.

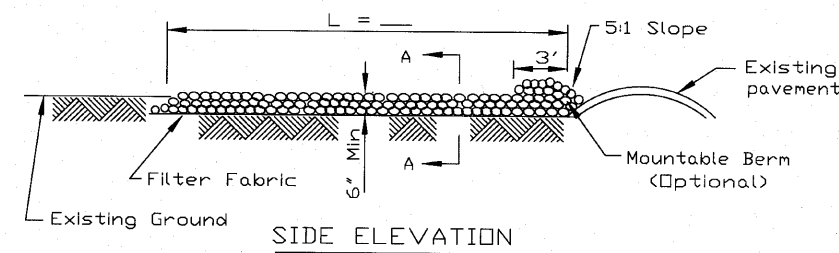
EROSION CONTROL BLANKET INSTALLATION DETAILS

Designed	Date
Drawn B. JOHNSON	11/08
Checked	
Approved	

STABILIZED CONSTRUCTION ENTRANCE PLAN



\* Must Extend Full Width Of Ingress And Egress Operation.



NOTES:

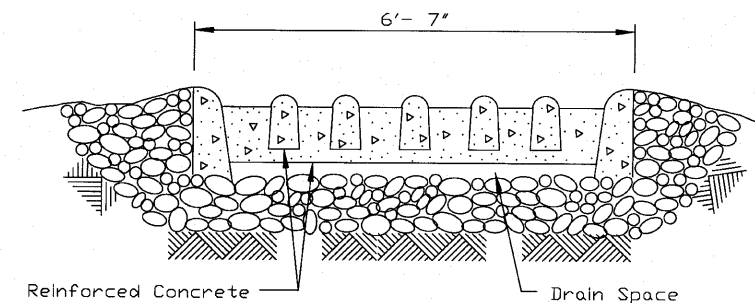
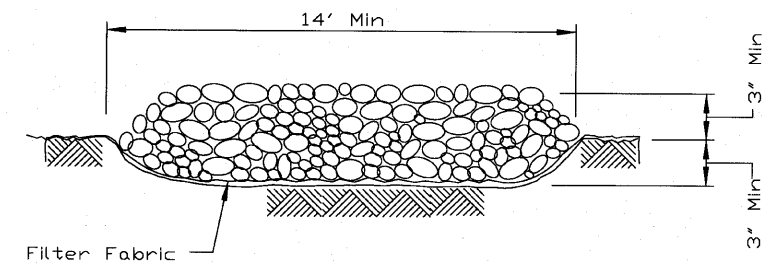
1. Filter fabric shall meet the requirements of material specification 592 GEOTEXTILE, Table I or 2, Class I, II or IV and shall be placed over the cleared area prior to the placing of rock.
2. Rock or reclaimed concrete shall meet one of the following IDOT coarse aggregate gradation, CA-1, CA-2, CA-3 or CA-4 and be placed according to construction specification 25 ROCKFILL using placement Method 1 and Class III compaction.
3. Any drainage facilities required because of washing shall be constructed according to manufacturers specifications.
4. If wash racks are used they shall be installed according to the manufacturer's specifications.

REFERENCE Project	Date
Designed	Date
Checked	Date
Approved	Date



STANDARD DWG. NO.	IL-630
SHEET 1 OF 2	
DATE	8-18-94

STABILIZED CONSTRUCTION ENTRANCE PLAN



REFERENCE Project	Date
Designed	Date
Checked	Date
Approved	Date



STANDARD DWG. NO.	IL-630
SHEET 2 OF 2	
DATE	8-18-94

FILE NAME =	USER NAME = p001schc	DESIGNED - LP	REVISED -	STATE OF ILLINOIS DEPARTMENT OF TRANSPORTATION	SHORT STREET OVER EAST BRANCH DUPAGE RIVER EROSION AND SEDIMENT CONTROL DETAILS	F.A. RTE.	SECTION	COUNTY	TOTAL SHEETS	SHEET NO.	
W:\871-002 Short Phase II\CADD_Sheets\871-002-ah1-eros4.dgn		DRAWN - LP	REVISED -					03-00050-00-BR	DUPAGE	45	14
PLOT SCALE = 22.0000' / IN.		CHECKED - JP	REVISED -			SCALE: NTS	SHEET NO. 14 OF 45 SHEETS	STA. 6+24.80 TO STA. 8+33.80	CONTRACT NO. 63468		
PLOT DATE = 7/31/2010		DATE - 08/02/2010	REVISED -			ILLINOIS FED. AID PROJECT BFM-8003 (676)					