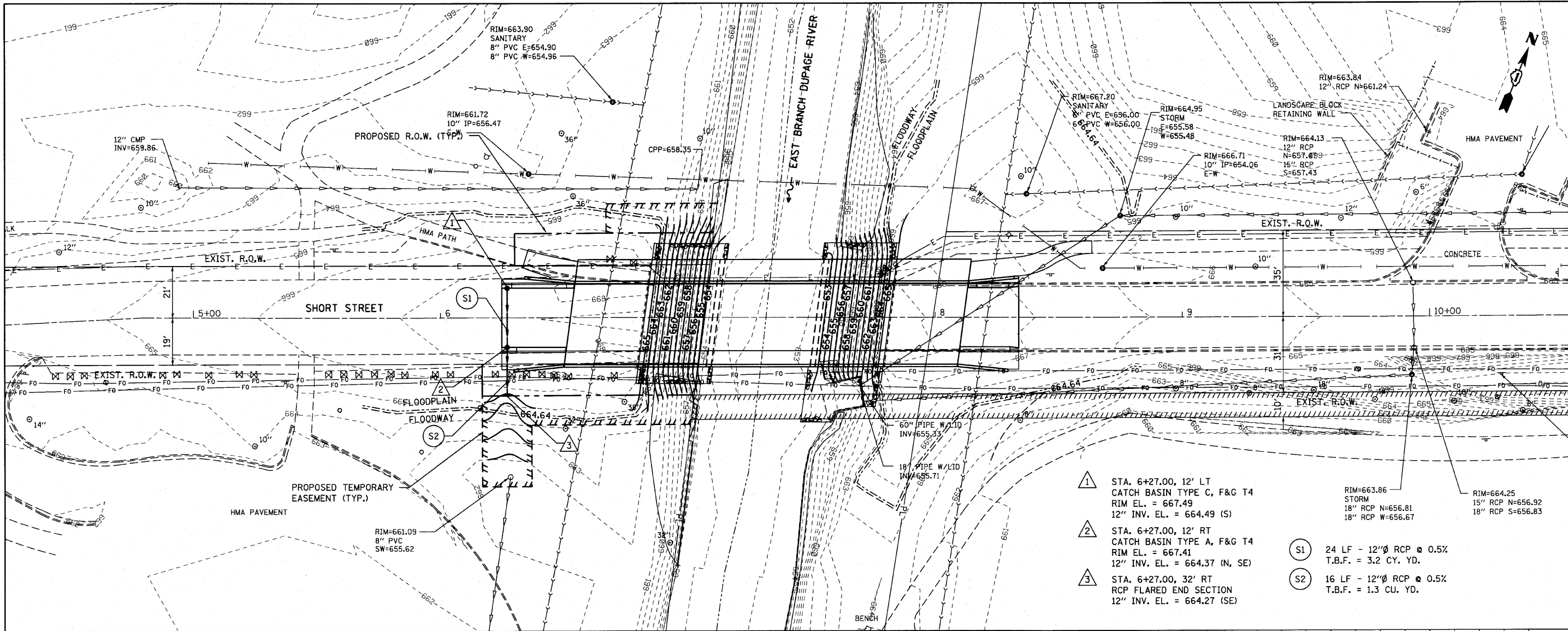
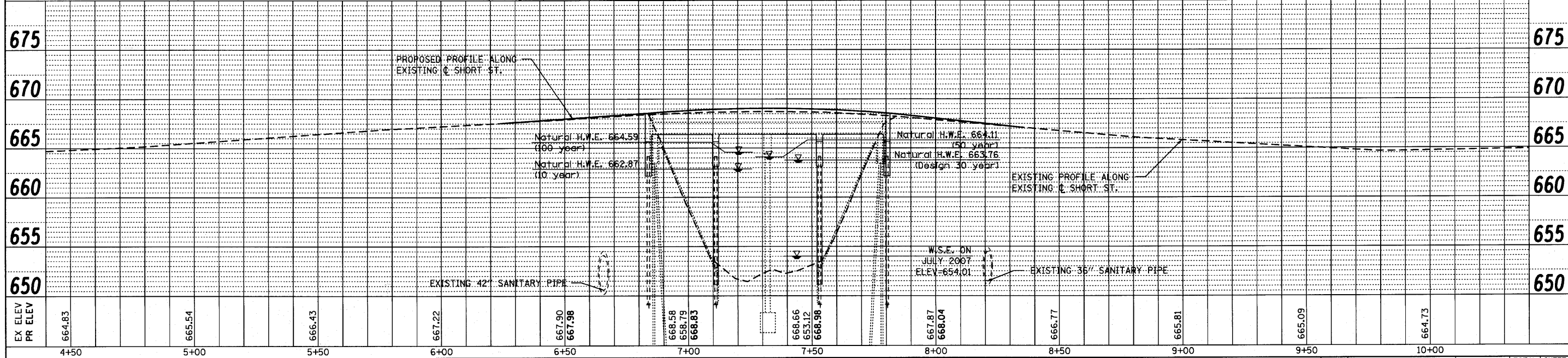


PLAN	SURVEYED	BY	DATE
	PLANNED		
	NOTED		
	CHECKED		
	BY		
	DATE		
	NO.		
	FILE NAME		

PROFILE	SURVEYED	BY	DATE
	PLANNED		
	NOTED		
	CHECKED		
	BY		
	DATE		
	NO.		
	FILE NAME		



- 1 STA. 6+27.00, 12' LT
CATCH BASIN TYPE C, F&G T4
RIM EL. = 667.49
12" INV. EL. = 664.49 (S)
- 2 STA. 6+27.00, 12' RT
CATCH BASIN TYPE A, F&G T4
RIM EL. = 667.41
12" INV. EL. = 664.37 (N, SE)
- 3 STA. 6+27.00, 32' RT
RCP FLARED END SECTION
12" INV. EL. = 664.27 (SE)
- S1 24 LF - 12" RCP @ 0.5%
T.B.F. = 3.2 CU. YD.
- S2 16 LF - 12" RCP @ 0.5%
T.B.F. = 1.3 CU. YD.



FILE NAME =	USER NAME =	DESIGNED -	REVISED -	STATE OF ILLINOIS DEPARTMENT OF TRANSPORTATION		SHORT STREET OVER EAST BRANCH DUPAGE RIVER DRAINAGE AND UTILITIES		F.A. RTE.	SECTION	COUNTY	TOTAL SHEETS	SHEET NO.
W:\871-002 Short Phase II\CADD_Sheets\871-002-aht-drain.dgn	pocicche	LP	VILLAGE 08/09/10					03-00050-00-BR	DUPAGE	45	16	
PLOT SCALE = 20.0000' / IN.		LP						CONTRACT NO. 63468				
PLOT DATE = 8/28/2010		JP						ILLINOIS FED. AID PROJECT BRM-8003 (676)				
		DATE -	REVISED -	HORIZ. 1"=20' SCALE: VERT. 1"=5' SHEET NO. 16 OF 45 SHEETS STA. 6+24.80 TO STA. 8+33.80								