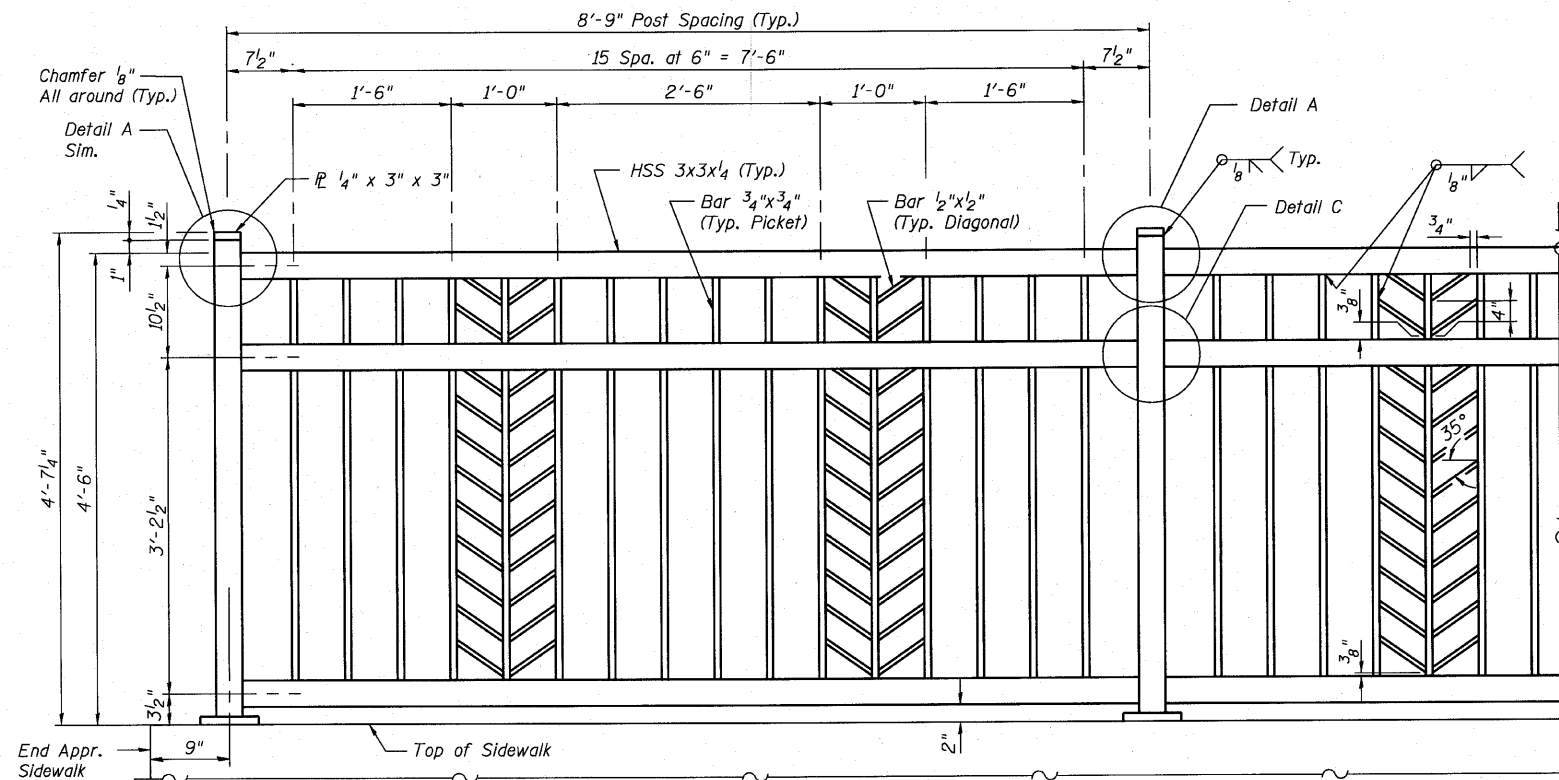
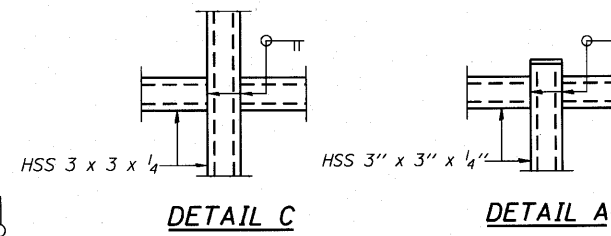


STATE OF ILLINOIS  
DEPARTMENT OF TRANSPORTATION

Notes:  
For Anchor Bolt Details and Off-Bridge  
Parapet Railing See Sht. 13 of 18



**BICYCLE RAILING**

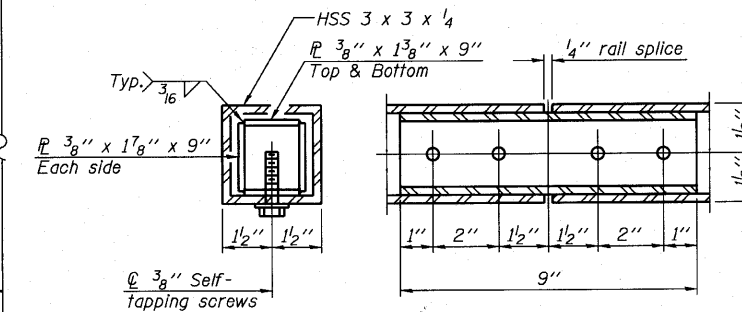


All post, railing, splices, anchor devices, and bent plates shall be completely shop painted using the Organic Zinc-Rich Paint System. The color of the final finish coat shall be Federal Standard No. 595, color chip 17038 (Gloss Black). See Special Provisions for "Cleaning and Painting New Metal Structures", and "Organic Zinc-Rich Paint System".  
All erection and handling damage to the shop applied paint system shall be repaired in accordance with the Special Provision "Cleaning and Painting New Metal Structures".

**BILL OF MATERIAL \***

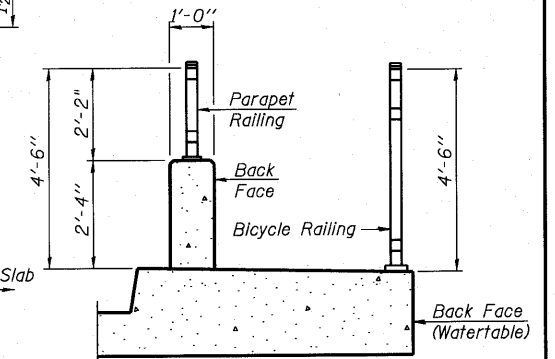
Item	Unit	Quantity
Bicycle Railing (Special)	Foot	158
Parapet Railing (Special)	Foot	316

\* Rail on bridge and appr. slab.

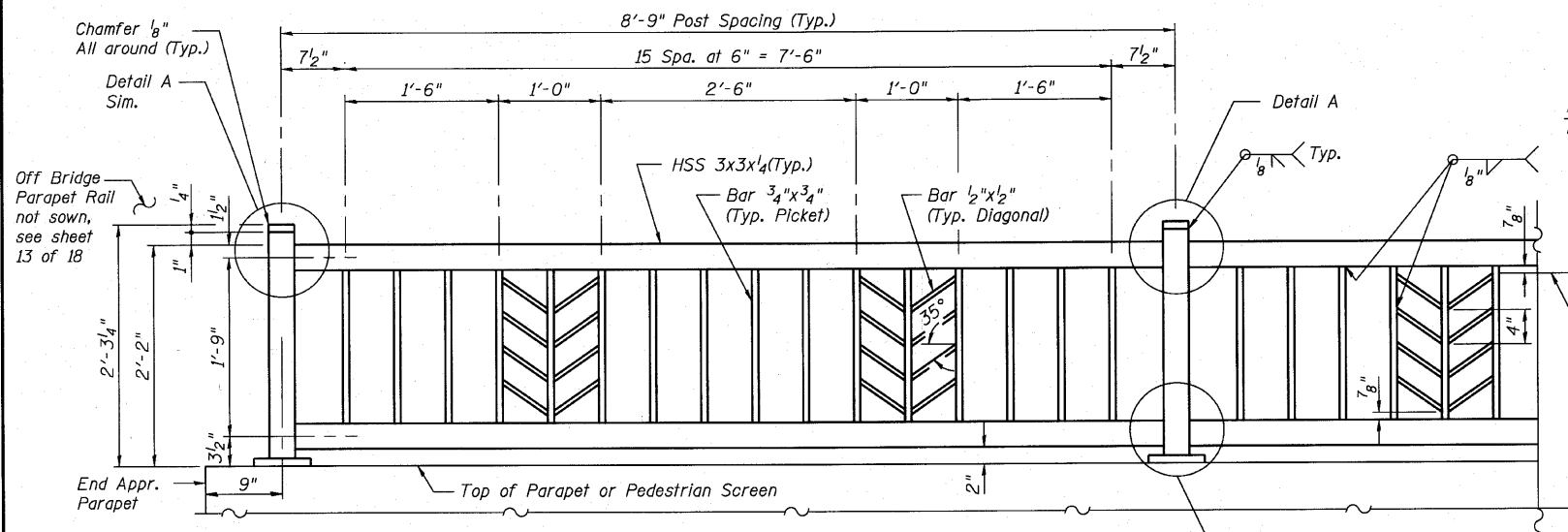


**RAIL SPLICE**

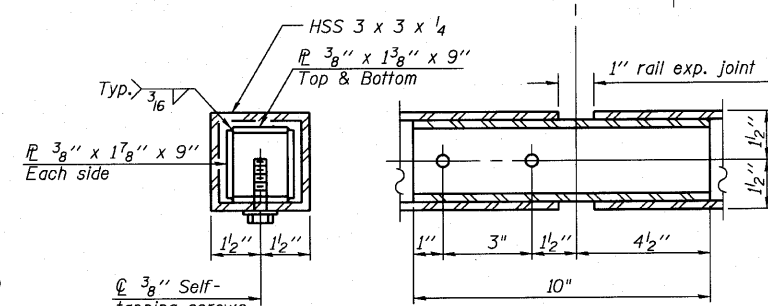
Exp. Jt. See Shts 6 and 7 of 18 for locations



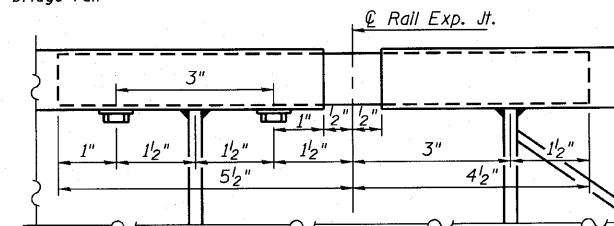
**SECTION THRU SIDEWALK**



**PARAPET RAILING  
ELEVATION**



**PLAN**



**ELEVATION  
RAIL EXPANSION JOINT**

Typ. for bicycle rail and parapet rail

**BICYCLE RAILING  
STRUCTURE NUMBER 022-6649**

DESIGNED -	JJI
CHECKED -	SRT
DRAWN -	GM
CHECKED -	SRT

**Bollinger, Lach & Associates, Inc.**  
ITASCA, ILLINOIS

SHEET NO. 12	F.A. RTE.	SECTION	COUNTY	TOTAL SHEETS	SHEET NO.
18 SHEETS	-	03-00050-00-BR	DUPAGE	45	33
			CONTRACT NO. 63468		
FED. ROAD DIST. NO. -			ILLINOIS FED. AID PROJECT		BPM-8003 (676)