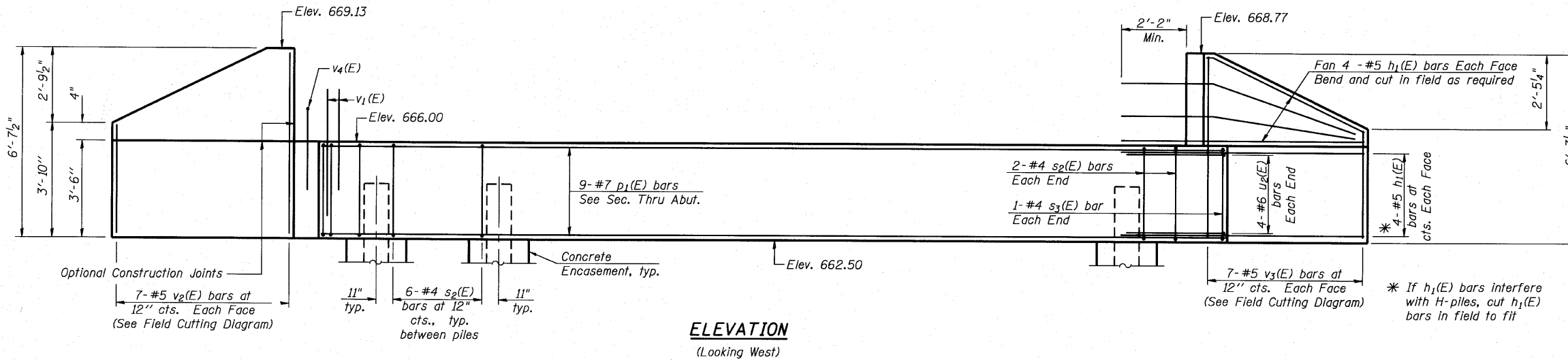
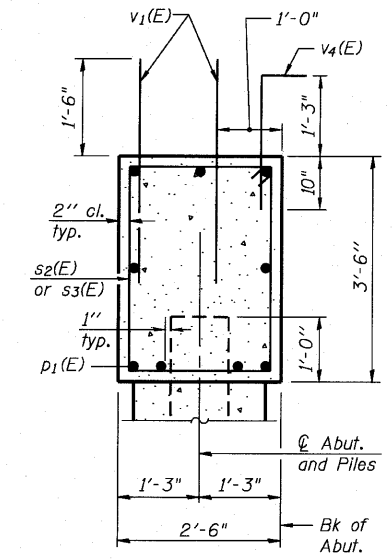


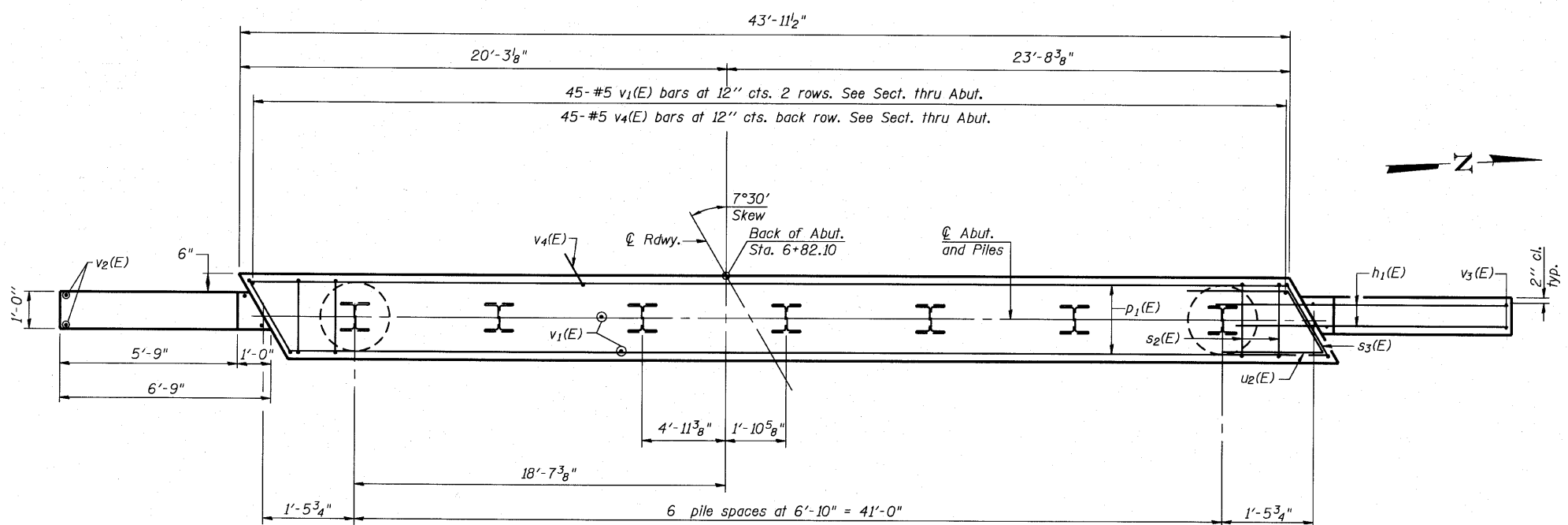
STATE OF ILLINOIS
DEPARTMENT OF TRANSPORTATION



ELEVATION
(Looking West)



SEC. THRU ABUT.

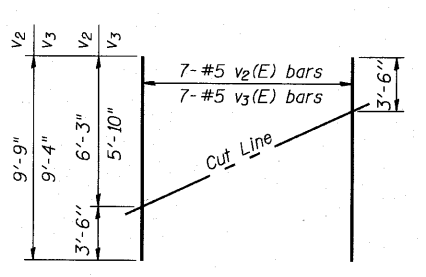


PLAN

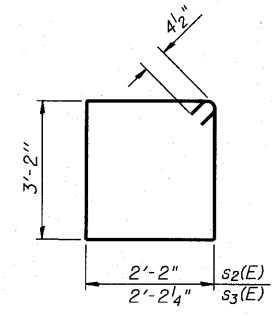
PILE DATA

Type: HP 12X53 with pile shoes
Nominal Required Bearing: 419 Kips
Factored Resistance Available: 209.5 Kips
Est. Length: 38'
No. Production Piles: 6
No. Test Piles: 1

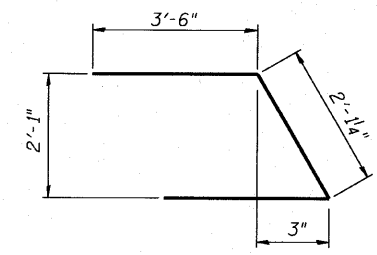
DESIGNED -	JJI
CHECKED -	SRT
DRAWN -	GM
CHECKED -	SRT



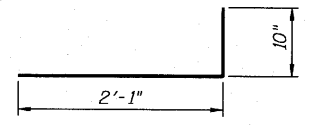
FIELD CUTTING DIAGRAM
Order v2(E) and v3(E) full length. Cut as shown and use remainder of bars in opposite face.



BARS s2(E) & s3(E)



BAR u2(E)



BAR v4(E)

BILL OF MATERIAL

Bar	No.	Size	Length	Shape
h1(E)	32	#5	9'-8"	—
p1(E)	9	#7	43'-6"	—
s2(E)	40	#4	11'-5"	□
s3(E)	2	#4	11'-6"	□
u2(E)	8	#6	9'-2"	∩
v1(E)	90	#5	3'-0"	—
v2(E)	7	#5	9'-9"	—
v3(E)	7	#5	9'-4"	—
v4(E)	45	#5	2'-11"	—
Structure Excavation		Cu. Yd.	86	
Concrete Structures		Cu. Yd.	16.9	
Reinforcement Bars, Epoxy Coated		Pound	2120	
Furnishing Steel Piles, HP 12X53		Foot	228	
Driving Piles		Foot	228	
Test Pile Steel HP 12X53		Each	1	
Concrete Encasement		Cu. Yd.	2.5	
Pile Shoes		Each	7	

For details of piles and Concrete Encasement, see sheet 17 of 18.

**WEST ABUTMENT
STRUCTURE NUMBER 022-6649**

SHEET NO. 14 18 SHEETS	F.A. RTE.	SECTION	COUNTY	TOTAL SHEETS	SHEET NO.
	-	03-00050-00-BR	DuPAGE	45	35
			CONTRACT NO. 63468		
FED. ROAD DIST. NO. -		ILLINOIS	FED. AID PROJECT	BRM-8003 (676)	

