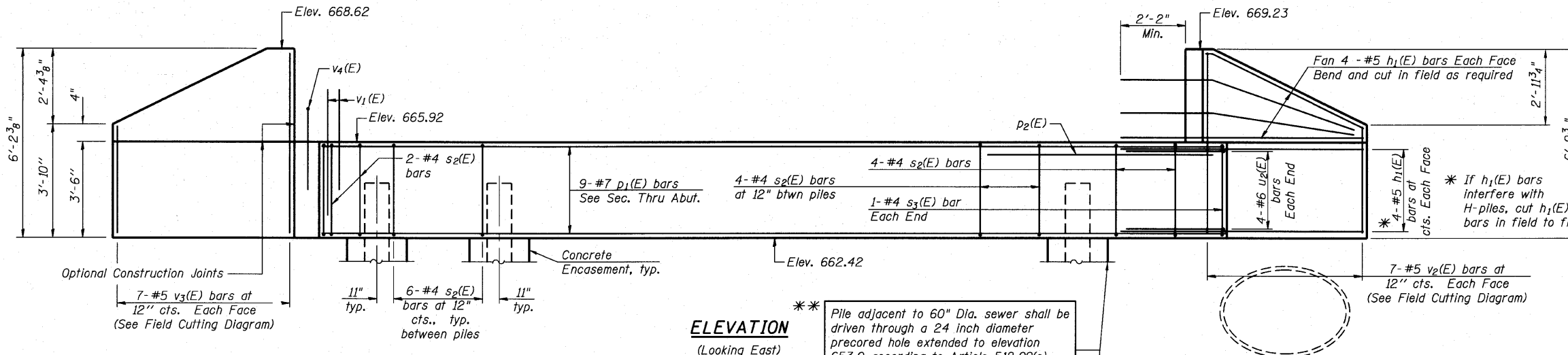


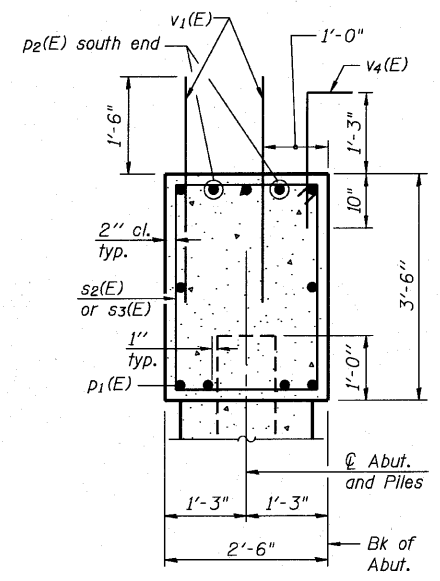
STATE OF ILLINOIS  
DEPARTMENT OF TRANSPORTATION



**ELEVATION**  
(Looking East)

\*\* Pile adjacent to 60" Dia. sewer shall be driven through a 24 inch diameter precored hole extended to elevation 653.0 according to Article 512.09(c) of the Standard Specifications. Cost included in driving piles.

Existing 60" Sewer. Probe for location prior to starting work. Cost included in Structure Excavation.

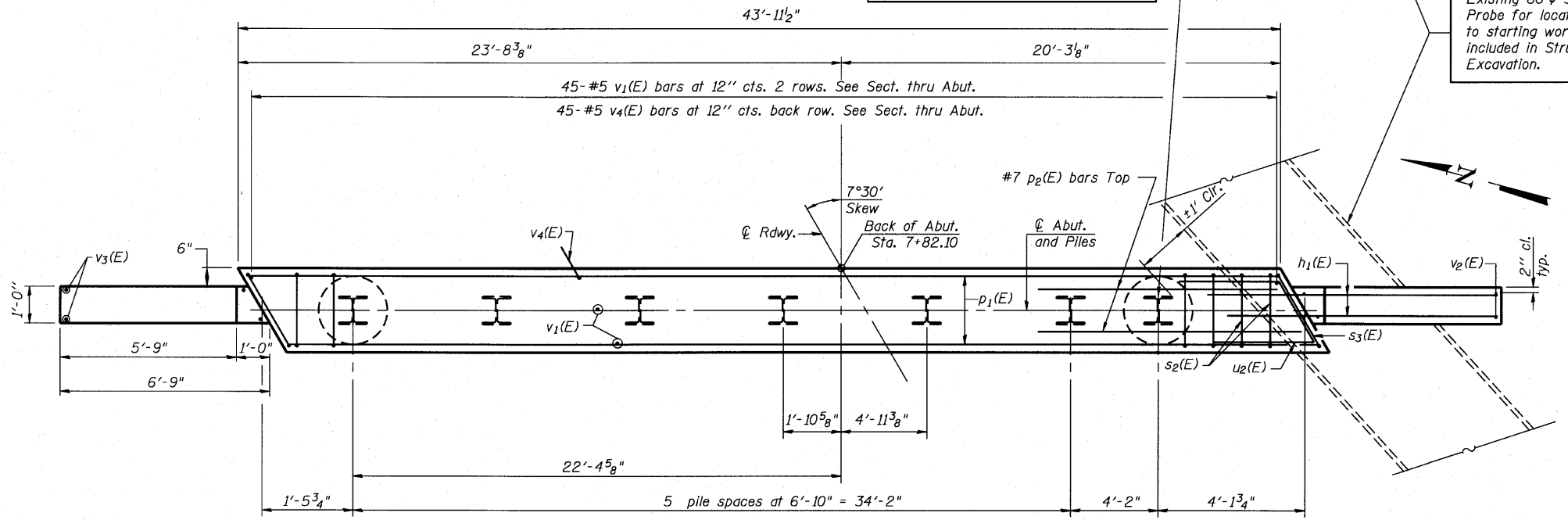


**SEC. THRU ABUT.**

**BILL OF MATERIAL**

Bar	No.	Size	Length	Shape
$h_1(E)$	32	#5	9'-8"	—
$p_1(E)$	9	#7	43'-6"	—
$p_2(E)$	2	#7	9'-4"	—
$s_2(E)$	40	#4	11'-5"	□
$s_3(E)$	2	#4	11'-6"	□
$u_2(E)$	8	#6	9'-2"	┘
$v_1(E)$	90	#5	3'-0"	—
$v_2(E)$	7	#5	9'-9"	—
$v_3(E)$	7	#5	9'-4"	—
$v_4(E)$	45	#5	2'-11"	┘
Structure Excavation			Cu. Yd.	86
Concrete Structures			Cu. Yd.	16.9
Reinforcement Bars, Epoxy Coated			Pound	2120
Furnishing Steel Piles, HP 12X53			Foot	270
Driving Piles			Foot	270
Test Pile Steel HP 12X53			Each	1
Concrete Encasement			Cu. Yd.	2.5
Pile Shoes			Each	7

For details of piles and Concrete Encasement, see sheet 17 of 18.

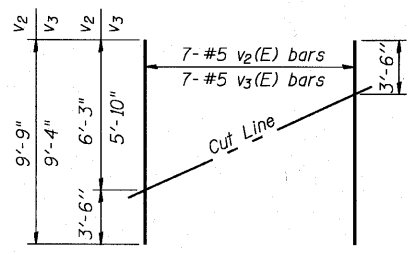


**PLAN**

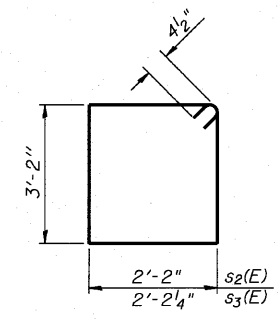
**PILE DATA \*\***

Type: HP 12X53 with pile shoes  
Nominal Required Bearing: 419 Kips  
Factored Resistance Available: 209.5 Kips  
Est. Length: 45'  
No. Production Piles: 6  
No. Test Piles: 1

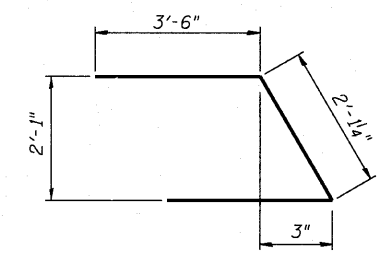
DESIGNED -	JJI
CHECKED -	SRT
DRAWN -	GM
CHECKED -	SRT



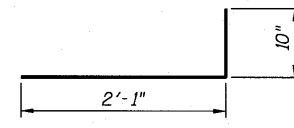
**FIELD CUTTING DIAGRAM**  
Order  $v_2(E)$  and  $v_3(E)$  full length. Cut as shown and use remainder of bars in opposite face.



**BARS  $s_2(E)$  &  $s_3(E)$**



**BAR  $u_2(E)$**



**BAR  $v_4(E)$**



**EAST ABUTMENT  
STRUCTURE NUMBER 022-6649**

SHEET NO. 15 18 SHEETS	F.A. RTE.	SECTION	COUNTY	TOTAL SHEETS	SHEET NO.
	-	03-00050-00-BR	DuPAGE	45	36
CONTRACT NO. 63468			FED. ROAD DIST. NO. - ILLINOIS FED. AID PROJECT BFM-8003 (676)		