

LUMINAIRE: FINISH TO BE BLACK
 250 WATT HIGH PRESSURE SODIUM LAMP
 240 VOLT BALLAST
 I.E.S. TYPE: MC II LIGHT DISTRIBUTION MEDIUM FULL CUTOFF TYPE 2 OR
 LENS TYPE: FLAT
 INITIAL LAMP LUMENS: 28,000
 LAMP LIFE: 24,000 HOURS

LUMINAIRE: FINISH TO BE BLACK
 400 WATT HIGH PRESSURE SODIUM LAMP
 240 VOLT BALLAST
 I.E.S. TYPE: MC II LIGHT DISTRIBUTION MEDIUM FULL CUTOFF TYPE 2 OR
 LENS TYPE: FLAT
 INITIAL LAMP LUMENS: 50,000
 LAMP LIFE: 24,000 HOURS

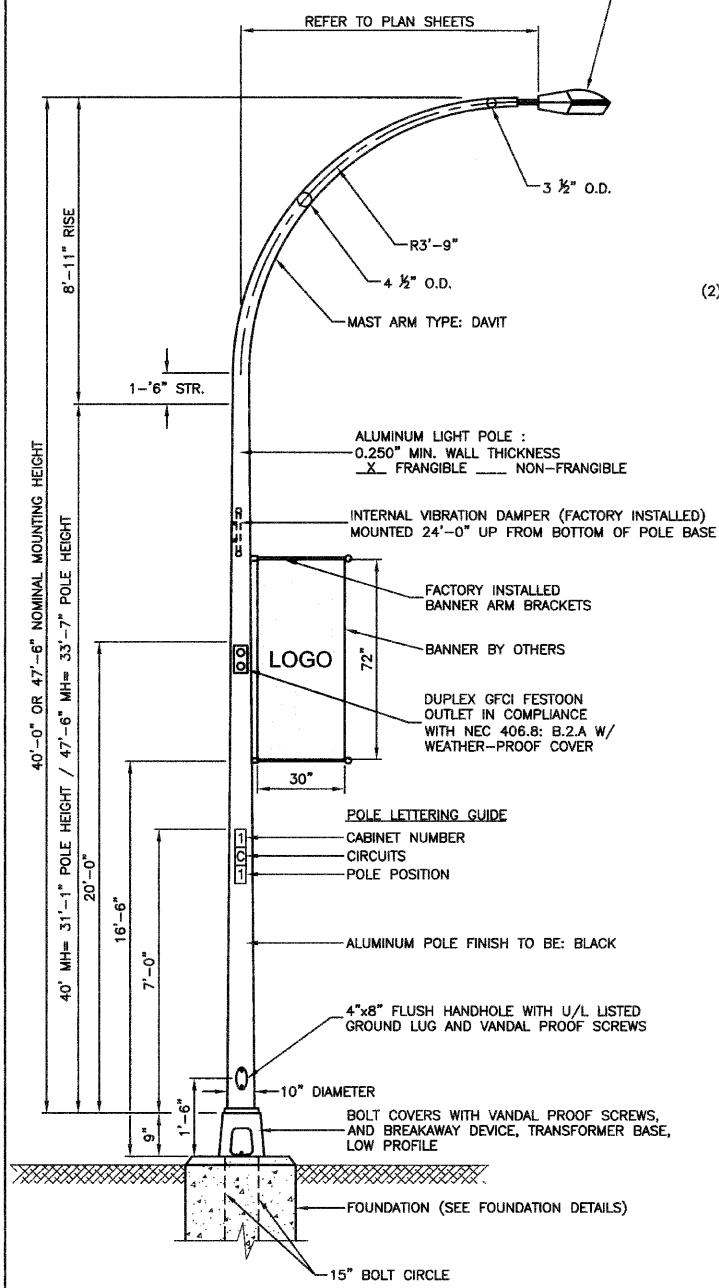
LUMINAIRE: FINISH TO BE BLACK
 150 WATT HIGH PRESSURE SODIUM LAMP
 240 VOLT BALLAST
 I.E.S. TYPE: MC III LIGHT DISTRIBUTION MEDIUM FULL CUTOFF TYPE 3
 LENS TYPE: FLAT
 INITIAL LAMP LUMENS: 18,000
 LAMP LIFE: 24,000 HOURS

NOMINAL WATTAGE	FUSE SIZE
150	2.0 AMP
250	3.5 AMP
400	5.0 AMP
FESTOON OUTLET	6.0 AMP

LUMINAIRE FUSE SIZE TABLE

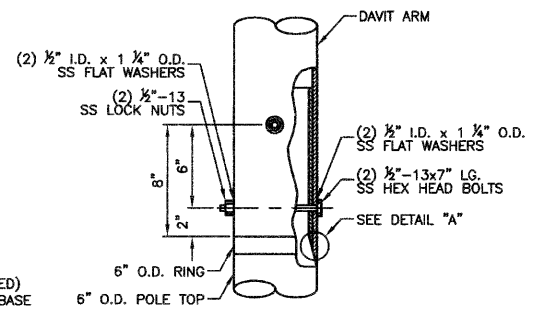
DATE	
BY	
REVISION	
NO.	
DATE	
BY	
REVISION	
NO.	
DATE	
BY	
REVISION	
NO.	

DATE	
BY	
REVISION	
NO.	
DATE	
BY	
REVISION	
NO.	
DATE	
BY	
REVISION	
NO.	

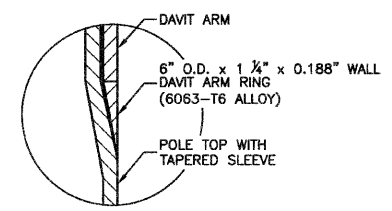


- NOTES:**
1. THE LIGHTING UNITS SHALL MEET ASHTO DESIGN CRITERIA. DESIGN FOR 90 M.P.H. WIND WITH 30% GUST AND 75 POUND LUMINAIRE HAVING AN E.P.A. OF 1.6 SQ. FT. AND PROPER ICE LOADING.
 2. ALUMINUM ALLOY 6063-T6 SHALL BE USED.

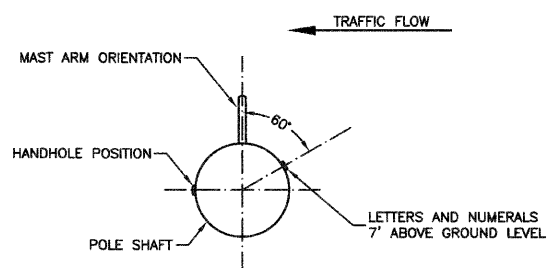
TYPICAL POLE INSTALLATION (40' MH & 47.5' MH)



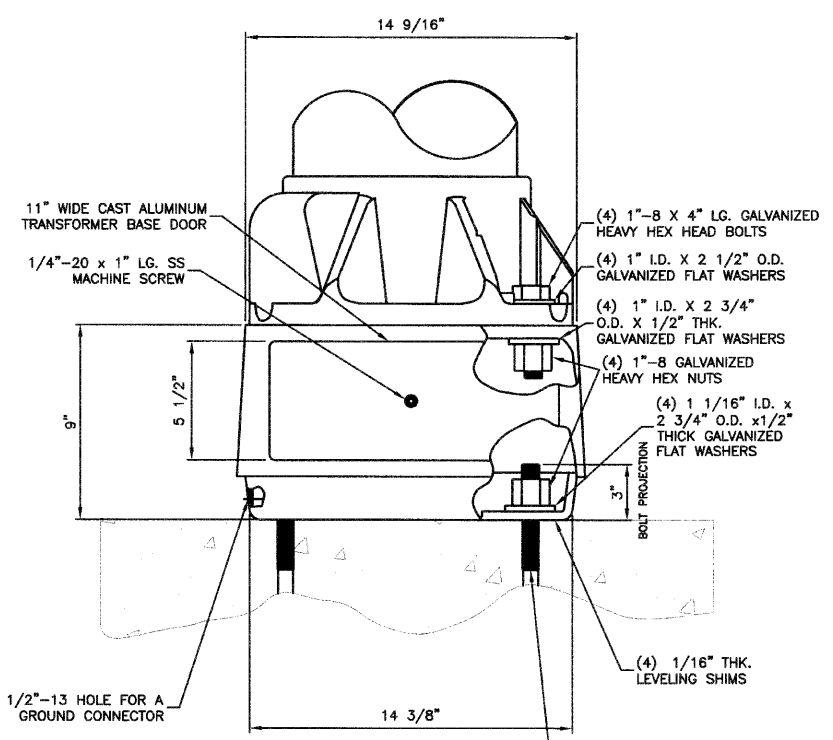
CONNECTION DETAIL



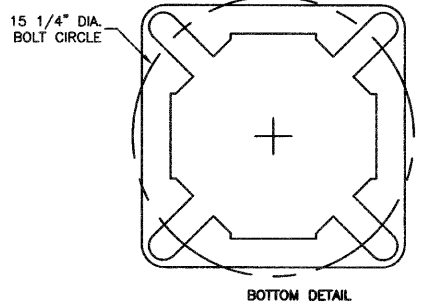
DETAIL "A"



POSITION OF HANDHOLE AND NUMERALS ON POLE



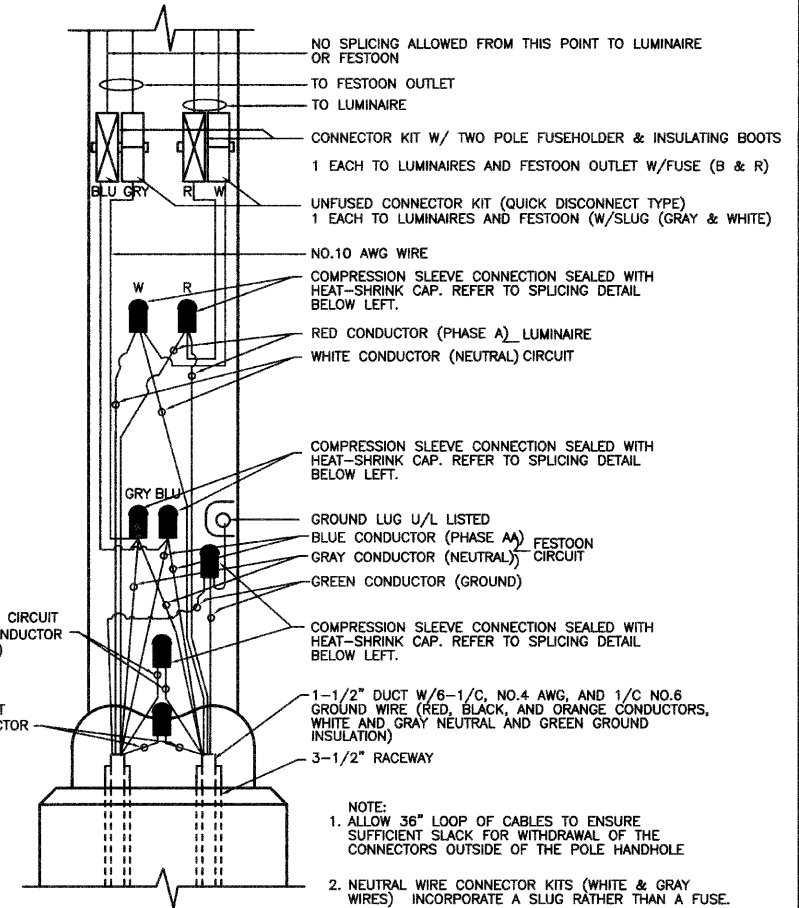
TOP DETAIL



BOTTOM DETAIL

TRANSFORMER BASE DETAIL, 15" BOLT CIRCLE

- NOTES:**
1. BREAKAWAY DEVICE TO BE ASHTO APPROVED.
 2. TRANSFORMER BASE AND LIGHTPOLE TO BE LEVELED AS ONE UNIT WITHOUT USING LEVELING SHIMS IF REQUIRED.
 3. ALUMINUM ALLOY FINISH TO BE BLACK.



POLE HANDHOLE WIRING DIAGRAM
 (TYPICAL FOR LUMINAIRE INSTALLATION)
 (WITH FESTOON)

FILE NAME = 09301-LIGHT-02 - P01

USER NAME =	DESIGNED -- PAP	REVISED -- 07-30-10
	CHECKED -- PKB	REVISED -- 08-20-10
PLOT SCALE = N/A	DRAWN -- MJD	REVISED --
PLOT DATE = 04-28-10	CHECKED -- DWS	REVISED --

STATE OF ILLINOIS
 DEPARTMENT OF TRANSPORTATION

HARLEM AVENUE		F.A.P. RITE	SECTION	COUNTY	TOTAL SHEETS	SHEET NO.
71ST STREET TO 93RD STREET		348	06-00054-00-LT	COOK	19	12
STREET LIGHTING POLE DETAILS		SCALE: N/A	SHEET NO. 12 OF 19 SHEETS	STA. N/A	TO STA. N/A	CONTRACT NO. 63477



FED. ROAD DIST. NO. 1	ILLINOIS	FED. AID PROJECT ARE-TE-00D1(808)
-----------------------	----------	-----------------------------------