

F.A. RTE.	SECTION	COUNTY	TOTAL SHEETS	SHEET NO.
0005	06-00057-00-BR	MCHENRY	22	1
FED. ROAD DIST. NO.	ILLINOIS	CONTRACT NO. 63508		

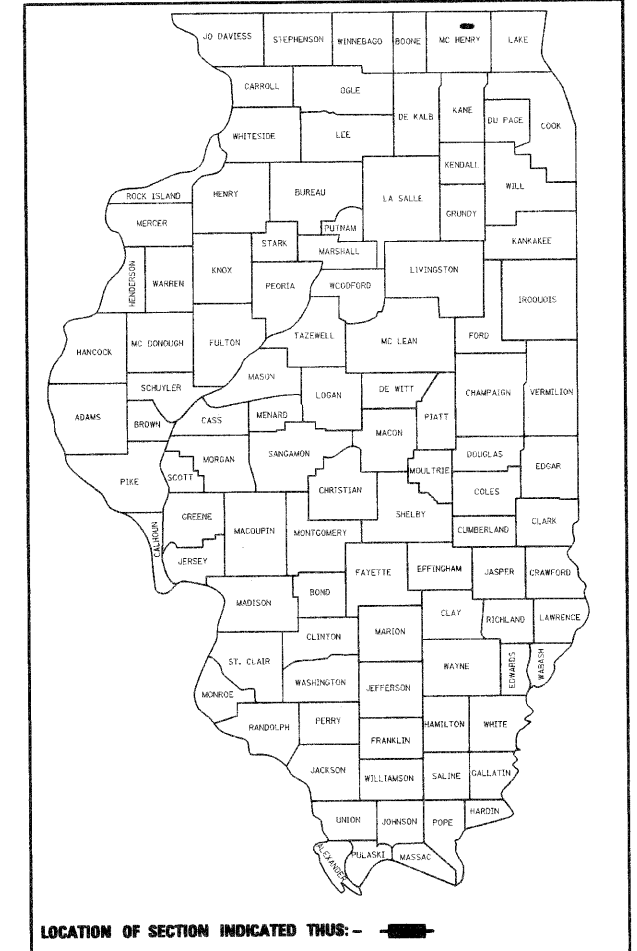
INDEX OF SHEETS

- 1 COVER SHEET
- 2 GENERAL NOTES, LIST OF STATE HIGHWAY STANDARDS, AND COMMITMENTS
- 3 SUMMARY OF QUANTITIES
- 4-5 TYPICAL SECTIONS
- 6 REMOVAL PLAN
- 7 ALIGNMENT AND TIES
- 8 GRADING PLAN
- 9 PLAN AND PROFILE SHEET
- 10 TEMPORARY DETOUR PLAN
- 11 PAVEMENT MARKING, EROSION CONTROL PLAN, AND RESTORATION PLAN
- 12-16 CULVERT PLANS
- 17-18 CROSS SECTIONS
- 19-22 DISTRICT DETAILS, CONSTRUCTION DETAILS

STATE OF ILLINOIS DEPARTMENT OF TRANSPORTATION DIVISION OF HIGHWAYS

PLANS FOR PROPOSED FEDERAL AID HIGHWAY

**F.A.U. ROUTE 0005 (AYER STREET)
BRIDGE REPLACEMENT OVER MOKELER CREEK
SECTION 06-00057-00-BR
PROJECT NO. BRM 8003-(718)
STRUCTURE NO. 056-6203
CITY OF HARVARD
McHENRY COUNTY, ILLINOIS
JOB NO. C-91-072-07**



STRUCTURE INFORMATION:

EXISTING SN 056-6201
EXISTING STRUCTURE IS A 3 CELL CAST-IN-PLACE REINFORCED CONCRETE BOX CULVERT WITH A TOTAL SPAN OF 34'0". THE DECK MEASURES 24'3" OUT-TO-OUT OF HEADWALLS WITH NO SKEW. THE INDIVIDUAL CELLS ARE 10'0" X 4'0" WITH 1'0" CENTER AND END WALLS. STRUCTURE TO BE REMOVED AS SHOWN WITH NO SALVAGE.

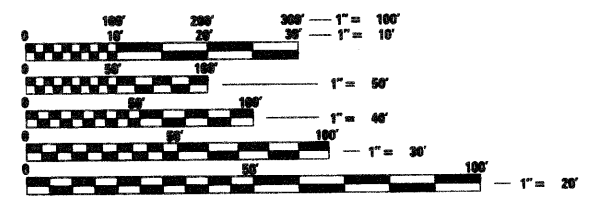
PROPOSED SN 056-6203:
PROPOSED STRUCTURE IS A 3 CELL PRECAST CONCRETE BOX CULVERT WITH CAST IN PLACE END SECTIONS, WITH A TOTAL SPAN OF 32'0". THE DECK MEASURES 53'2" OUT-TO-OUT OF HEADWALLS WITH NO SKEW. THE INDIVIDUAL CELLS ARE 10'0" X 5'0".

TRAFFIC DATA

ADT: AYER STREET 2,200 VPD (2005) 9,000 VPD (2030)

POSTED SPEED DESIGN SPEED
30 MPH (EXISTING) 30 MPH (PROPOSED)
30 MPH (PROPOSED)

DESIGN DESIGNATION
FUNCTIONAL CLASSIFICATION - COLLECTOR (URBAN)



FULL SIZE PLANS HAVE BEEN PREPARED USING STANDARD ENGINEERING SCALES. REDUCED SIZED PLANS WILL NOT CONFORM TO STANDARD SCALES. IN MAKING MEASUREMENTS ON REDUCED PLANS, THE ABOVE SCALES MAY BE USED.

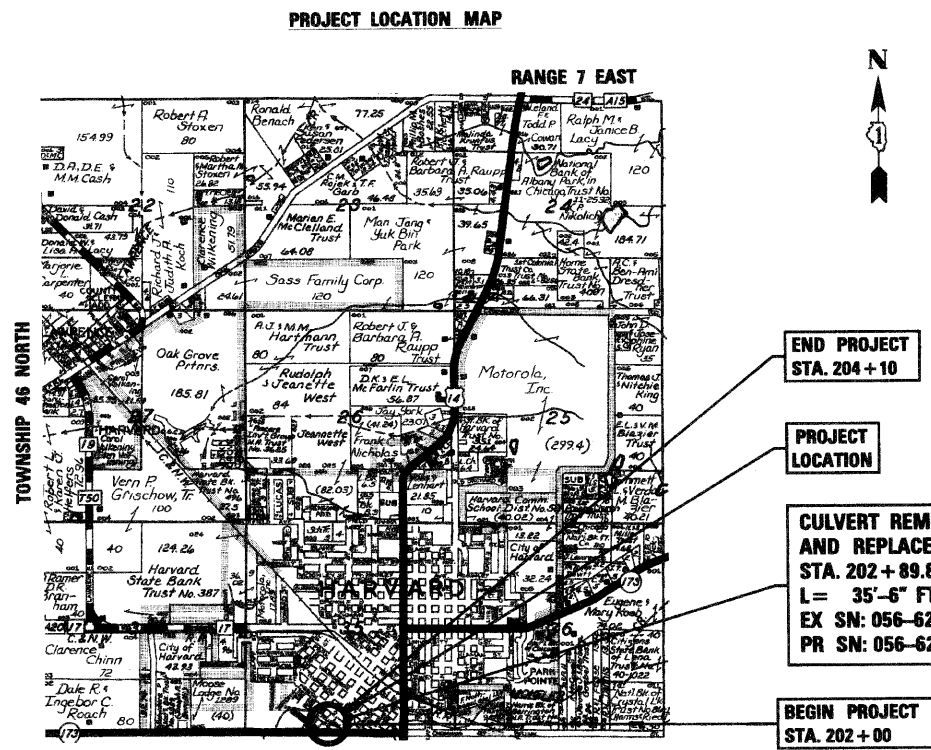
JULIE JOINT UTILITY LOCATION INFORMATION FOR EXCAVATION CALL 811

Illinois Professional Design Firm # 184-000108

SEC Group, Inc.
An HR Green Company
420 N. Front Street,
McHenry, IL 60050-2138
t. 815.385.1778 f. 815.385.1781
www.secgroupinc.com
McHenry, IL - Yorkville, IL - New Lenox, IL - Chicago, IL

PROJECT ENGINEER: JOSEPH P. GUERRIERO
PROJECT MANAGER: KEVIN M. ARFT, P.E.
CONTRACT NO. 63508

PROJECT IS LOCATED IN THE CITY OF HARVARD



PROJECT LENGTH

NET LENGTH OF PROJECT (AYER STREET) = 210 FT (0.040 MI)
BRIDGE OMISSION (OR STRUCTURE LENGTH) (056-6203) = 34 FT
GROSS LENGTH OF PROJECT = 210 FT (0.040 MI)

STRUCTURAL ENGINEER'S SIGN & SEAL

ROBERT G. DAVIES, S.E., P.E.
EXPIRES: 11-30-2010

PRINTED BY THE AUTHORITY OF THE STATE OF ILLINOIS

STATE OF ILLINOIS
DEPARTMENT OF TRANSPORTATION
DIVISION OF HIGHWAYS

APPROVED CITY OF HARVARD

PASSED AUGUST 27 2010
 DISTRICT ONE ENGINEER OF LOCAL ROADS AND STREETS

RELEASING FOR BID BASED ON LIMITED REVIEW AUGUST 30 2010
 DEPUTY DIRECTOR OF HIGHWAYS, REGION ONE ENGINEER

PROFESSIONAL ENGINEER'S SIGN & SEAL

KEVIN M. ARFT, P.E.
EXPIRES: 11-30-2011

COMPANY NAME: SEC GROUP, INC.
 PROJECT CONTACT: Robert G. Davies
 CLIENT: OTTLICH
 FILE NAME: 060554-CV-0001
 PLOT DRIVER: McHenry-1050-plott11r-Cr
 PEN TABLE: standard-tran.tbl
 PROGRAM AND OFFICE ENGINEER: CHARLES F. RIDDLE, P.E. 847-705-4406, SCHAMBURG, IL

SPECIFICATIONS & GENERAL NOTES

- ALL CONSTRUCTION SHALL BE IN CONFORMANCE WITH THE APPLICABLE REQUIRMENTS SET FORTH IN "THE STANDARD SPECIFICATIONS FOR ROAD AND BRIDGE CONSTRUCTION" ADOPTED JANUARY 1, 2007 THEREINAFTER REFERED TO AS STANDARD SPECIFICATIONS, THE LATEST EDITION OF THE "ILLINOIS MANUAL ON UNIFORM TRAFFIC CONTROL DEVICES FOR STREETS AND HIGHWAYS" IN EFFECT ON THE DATE OF INVATATION TO BIDS; THE "SUPPLEMENTAL SPECIFICATIONS AND RECURRING SPECIAL PROVISIONS" ADOPTED JANUARY 1, 2010, CITY OF HARVARD ENGINEERING DETAILS, INTERIM SPECIAL PROVISIONS AS INCLUDED IN THE CONTRACT DOCUMENTS; AND THE DETAILS AND STANDARDS CONTAINED IN THESE PLANS.
- THE CONTRACTOR WILL PROVIDE AND INSTALL TWO (2) WEIGHTED SAND BAGS ON EACH BARRICADE USED. (TYPE I OR TYPE II (ONE (1) WEIGHTED SAND BAG ACROSS EACH BOTTOM RAIL.) ALL TYPE III BARRICADES SHALL REQUIRE A MINIMUM OF FOUR (4) SANDBAGS PER BARRICADE.
- FORTY EIGHT HOURS BEFORE STARTING EXCAVATION THE CONTRACTOR WILL CALL J.U.L.I.E. (1-800-892-0123) TO HAVE THE LOCATION OF EXISTING UTILITIES STAKED.
- THE CONTRACTOR SHALL CONTACT THE CITY OF HARVARD AT LEAST 72 HOURS IN ADVANCE OF BEGINNING ANY WORK ON AYER STREET.
- THE CONTRACTOR WILL NOT BE ALLOWED TO SET UP A YARD OR FIELD OFFICE ON CITY PROPERTY WITHOUT WRITTEN PERMISSION FROM THE CITY OF HARVARD. THE CONTRACTOR SHALL RESTORE THE FIELD OFFICE SITE TO LIKE ORIGINAL.
- PRIOR TO COMMENCEMENT OF CONSTRUCTION, THE CONTRACTOR SHALL VERIFY ALL DIMENSIONS AND CONDITIONS AFFECTING THEIR WORK WITH THE ACTUAL CONDITIONS AT THE JOB SITE. IN ADDITION, THE CONTRACTOR MUST VERIFY THE ENGINEER'S LINE AND GRADE STAKES. IF THERE ARE ANY DISCREPANCIES FROM WHAT IS SHOWN ON THE CONSTRUCTION PLANS, HE MUST IMMEDIATELY REPORT SAME TO THE ENGINEER BEFORE DOING ANY WORK, OTHERWISE THE CONTRACTOR ASSUMES FULL RESPONSIBILITY. IN THE EVENT OF DISAGREEMENT BETWEEN THE CONSTRUCTION PLANS, STANDARD SPECIFICATIONS AND/OR SPECIAL DETAILS, THE CONTRACTOR SHALL SECURE WRITTEN INSTRUCTIONS FROM THE ENGINEER PRIOR TO PROCEEDING WITH ANY PART OF THE WORK AFFECTED BY OMISSIONS OR DISCREPANCIES. FAILING TO SECURE SUCH INSTRUCTIONS, THE CONTRACTOR WILL BE CONSIDERED TO HAVE PROCEEDED AT HIS OWN RISK AND EXPENSE. IN THE EVENT OF ANY DOUBT OR QUESTION ARISING WITH RESPECT TO THE TRUE MEANING OF THE CONSTRUCTION PLANS OR SPECIFICATIONS, THE DECISION OF THE ENGINEER SHALL BE FINAL AND CONCLUSIVE.
- THE CONTRACTOR SHALL ENSURE THAT ALL STORM SEWER MANHOLES AND SANITARY SEWER MANHOLES AND WATERMAIN VALVES REMAIN READILY ACCESSIBLE TO THE CITY FOR EMERGENCY OPERATIONS. THE LOCATIONS OF ALL STORM SEWER, WATERMAIN AND SANITARY FACILITIES SHALL BE MARKED AND READILY VISIBLE AT ALL TIMES.
- EXISTING FIELD TILES ENCOUNTERED DURING CONSTRUCTION SHALL BE MAINTAINED IN ACCORDANCE WITH SECTION 611 OF THE STANDARD SPECIFICATIONS. THIS WORK SHALL NOT BE PAID FOR SEPARATELY, BUT SHALL BE INCLUDED IN THE ITEM "REMOVAL AND DISPOSAL OF UNSUITABLE MATERIAL."
- PLACING EMBANKMENT SHALL BE IN ACCORDANCE WITH THE "BENCHING DETAIL FOR EMBANKMENT WIDENING" AND THE STANDARD SPECIFICATIONS. EXCAVATION OF THE BENCH CUTS WITHIN EXISTING EMBANKMENT WILL NOT BE PAID FOR SEPARATELY, BUT SHALL BE INCLUDED IN THE ITEM "REMOVAL AND DISPOSAL OF UNSUITABLE MATERIAL."
- THE WORK UNDER THIS CONTRACT SHALL CONFORM TO ALL REGULATIONS GIVEN IN THE ARMY CORE OF ENGINEERS PERMIT ISSUED FOR THE PROJECT AND THE IDOT FLOODWAY PERMIT ISSUED FOR THE PROJECT.
- THIS PROJECT MAY REQUIRE UP TO 2 CHANGABLE MESSAGE SIGNS.
- THE LOCATION OF THE EXISTING UTILITIES, AS SHOWN ON THE DRAWINGS, REPRESENT DATA RECIEVED FROM VARIOUS SOURCES. IT IS NOT GUARANTEED TO BE CORRECT OR ALL INCLUSIVE. THE CONTRACTOR SHALL CONDUCT HIS OWN INVESTIGATIONS INTO THE LOCATION, SIZE, DEPTH, AND NATURE OF ANY AND ALL EXISTING UTILITIES WHICH MAY INTERFERE WITH THE WORK UNDER THIS CONTRACT. ANY EXISTING UTILITIES WHICH ARE TO REMAIN IN SERVICE SHALL BE FULLY PROTECTED BY THE CONTRACTOR AND ANY DAMAGE CAUSED BY THE CONSTRUCTION SHALL BE IMMEDIATLY REPAIRED AT NO ADDITIONAL COST TO THE CITY.

STATE STANDARDS

- 000001-05 STANDARD SYMBOLS, ABBREVIATIONS AND PATTERNS
- 280001-05 TEMPORARY EROSION CONTROL SYSTEM
- 515001-03 NAME PLATE FOR BRIDGES
- 602401-02 MANHOLE TYPE A
- 602701-02 MANHOLE STEPS
- 604001-03 FRAME AND LIDS TYPE 1
- 606001-04 CONCRETE CURB TYPE B AND COMBINATION CURB AND GUTTER
- 606201-02 TYPE B GUTTER, INLET & OUTLET
- 701901-01 TRAFFIC CONTROL DEVICES
- 780001-02 TYPICAL PAVEMENT MARKINGS
- BLR22-6 TYPICAL APPLICATION OF TRAFFIC CONTROL DEVICES FOR CONSTRUCTION ON RURAL LOCAL HIGHWAYS (TWO LANE TWO WAY RURAL TRAFFIC) (ROAD CLOSED TO THRU TRAFFIC)

UTILITY CONTACTS

- COMED MIKE LENOX (815) 490-2869
- NICOR CONSTANCE LANE (630) 388-3830
- AT&T (630) 573-5450
- CITY OF HARVARD JIM KROCKENBERG (815) 943-0301

STANDARD ABBREVIATIONS

- B-B - BACK TO BACK OF CURB
- B.C. - BACK OF CURB
- B.O.C. - BACK OF CURB
- B.S.L. - BUILDING SETBACK LINE
- C.B. - STORM CATCH BASIN
- C.E. - COMMONWEALTH EDISON CO.
- D.E. - DRAINAGE EASEMENT
- E-E - EDGE TO EDGE OF PAVEMENT
- E.O.P. - EDGE OF PAVEMENT
- E.O.S. - EDGE OF SHOULDER
- E.P. - EDGE OF PAVEMENT
- E.S. - EDGE OF SHOULDER
- F.E.S. - FLARED END SECTION
- I.B.T. - ILLINOIS BELL TELEPHONE CO.
- L.E. - LANDSCAPE EASEMENT
- M.H. - MANHOLE (TYPE SPECIFIED ON PLANS)
- P.E. - PRIVATE EMTRANCE R.O.W. - RIGHT OF WAY
- T.B.F. - TRENCH BACKFILL
- T.C. - TOP OF CURB
- T.C.E. - TEMPORARY CONSTRUCTION EASEMENT T.O.B. - TOP OF BERM
- T.O.C. - TOP OF CURB
- U.E. - UTILITY EASEMENT

COMPANY NAME: SEC GROUP, INC.
 PROJECT CONTACT: Robert G. Davies
 CLIENT: City of Harvard
 DATE PLOTTED: 8/16/2010 8:35:52 AM
 FILE NAME: 080594-Wildcyn
 PLOT NUMBER: 22536.dwg
 PEN TABLE:

SEC Group, Inc.
 An HR Group Company
 400 N. First Street
 Moline, IL 61704-2100
 T 815.285.1778 F 815.285.1191
 www.secgroup.com
 Moline, IL • Rockford, IL • New Lenox, IL • Chicago, IL

USER NAME = whoad	DESIGNED = JPG	REVISED =
FILE NAME = 080594-Wildcyn	DRAWN = WJH	REVISED =
PLOT SCALE = N.T.S.	CHECKED = RGD	REVISED =
PLOT DATE = 8/16/2010	DATE = 8/16/10	REVISED =

**STATE OF ILLINOIS
 DEPARTMENT OF TRANSPORTATION**

**AYER STREET OVER MOKELER CREEK
 GENERAL NOTES**

SCALE: N.T.S. SHEET NO. OF SHEETS STA. TO STA.

F.A.U. RTE. 0005	SECTION 06-00057-00-BR	COUNTY McHENRY	TOTAL SHEETS 22	SHEET NO. 2
FED. ROAD DIST. NO. 1 ILLINOIS FED. AID PROJECT			CONTRACT NO. 63508	

SUMMARY OF QUANTITIES			URBAN	CONSTRUCTION TYPE CODE	
PAY ITEM NUMBER	PAY ITEMS	UNITS	TOTAL QUANTITY	ROADWAY 80% FEDERAL 20% LOCAL 1000-2A	BRIDGE 80% FEDERAL 20% LOCAL X028-2A
20101000	TEMPORARY FENCE	FOOT	195	195	---
20201200	REMOVAL AND DISPOSAL OF UNSUITABLE MATERIAL	CU YD	945	945	---
20400800	FURNISHED EXCAVATION	CU YD	250	250	---
20800150	TRENCH BACKFILL	CU YD	55	55	---
21101615	TOPSOIL FURNISH AND PLACE, 4"	SQ YD	1,670	1,670	---
X2130010	EXPLORATION TRENCH, SPECIAL	FOOT	50	50.0	---
25000210	SEEDING, CLASS 2A	ACRE	0.4	0.4	---
25000400	NITROGEN FERTILIZER NUTRIENT	POUND	31	31	---
25000500	PHOSPHORUS FERTILIZER NUTRIENT	POUND	31	31	---
25000600	POTASSIUM FERTILIZER NUTRIENT	POUND	31	31	---
25100630	EROSION CONTROL BLANKET	SQ YD	1,670	1,670	---
28000250	TEMPORARY EROSION CONTROL SEEDING	POUND	35	35	---
28000305	TEMPORARY DITCH CHECKS	FOOT	32	32	---
28000400	PERIMETER EROSION BARRIER	FOOT	655	655	---
28000510	INLET FILTERS	EACH	1	1	---
28100105	STONE RIPRAP, CLASS A3	SQ YD	16	16	---
28100705	STONE DUMPED RIPRAP, CLASS A3	SQ YD	45	---	45
28200200	FILTER FABRIC	SQ YD	20	20	---
31101200	SUB-BASE GRANULAR MATERIAL, TYPE B 4"	SQ YD	725	725	---
35501316	HOT-MIX ASPHALT BASE COURSE, 8"	SQ YD	725	725	---
40201000	AGGERGATE FOR TEMPORARY ACCESS	TON	25	25	---
40600100	BITUMINOUS MATERIALS (PRIME COAT)	GALLON	45	45	---
40603080	HOT-MIX ASPHALT BINDER COURSE, IL-19.0, N50	TON	85	85	---
40603310	HOT-MIX ASPHALT SURFACE COURSE, MIX "C", N50	TON	85	85	---
42400200	PORTLAND CEMENT CONCRETE SIDEWALK 5 INCH	SQ FT	510	510	---
44000100	PAVEMENT REMOVAL	SQ YD	610	610	---
44000200	DRIVEWAY PAVEMENT REMOVAL	SQ YD	85	85	---
44000500	COMBINATION CURB AND GUTTER REMOVAL	FOOT	28	28	---
44000600	SIDEWALK REMOVAL	SQ FT	470	470	---
48101200	AGGREGATE SHOULDERS, TYPE B	TON	40	40	---
50100100	REMOVAL OF EXISTING STRUCTURES	EACH	1	---	1
50104400	CONCRETE HEADWALL REMOVAL	EACH	1	1	---
50901750	PARAPET RAILING	FOOT	71	---	71
51500100	NAME PLATES	EACH	1	---	1
54001001	BOX CULVERT END SECTIONS, 1 CUVERT NO. 1	EACH	2	---	2
54002020	EXPANSION BOLTS 3/4 INCH	EACH	60	---	60
54021005	PRECAST CONCRETE BOX CULVERT 10'X5' (M273)	FOOT	160	---	160
550A0410	STORM SEWERS, CLASS A, TYPE 2 24"	FOOT	78	78	---
55101200	STORM SEWER REMOVAL 24"	FOOT	60	60	---
60221100	MANHOLES, TYPE A, 5'-DIAMETER, TYPE 1 FRAME, CLOSED LID	EACH	1	1	---
60603800	COMBINATION CURB AND GUTTER, TYPE B-6.12	FOOT	328	328	---
67100100	MOBILIZATION	L SUM	1	1	---
70102550	TRAFFIC CONTROL AND PROTECTION FOR TEMPORARY DETOUR	EACH	1	1	---
78000200	THERMOPLASTIC PAVEMENT MARKING - LINE 4"	FOOT	420	420	---
78000400	THERMOPLASTIC PAVEMENT MARKING - LINE 6"	FOOT	10	10	---
X0030850	TEMPORARY INFORMATION SIGNING	SQ FT	200	200	---
Z0004530	HOT-MIX ASPHALT DRIVEWAY PAVEMENT, 8"	SQ YD	85	85	---
Z0013798	CONSTRUCTION LAYOUT	L SUM	1	1	---

* SPECIALTY ITEM

COMPANY NAME: SEC Group, Inc.
 PROJECT CONTACT: [Redacted]
 CLIENT: Village of Berwyn
 DATE PLOTTED: 8/18/2010 3:24:19 PM
 FILE NAME: 080594-Seq.dgn
 PLOT DRIVER: pct.dif
 PEN TABLE: STANDARD-TRANS.tbl

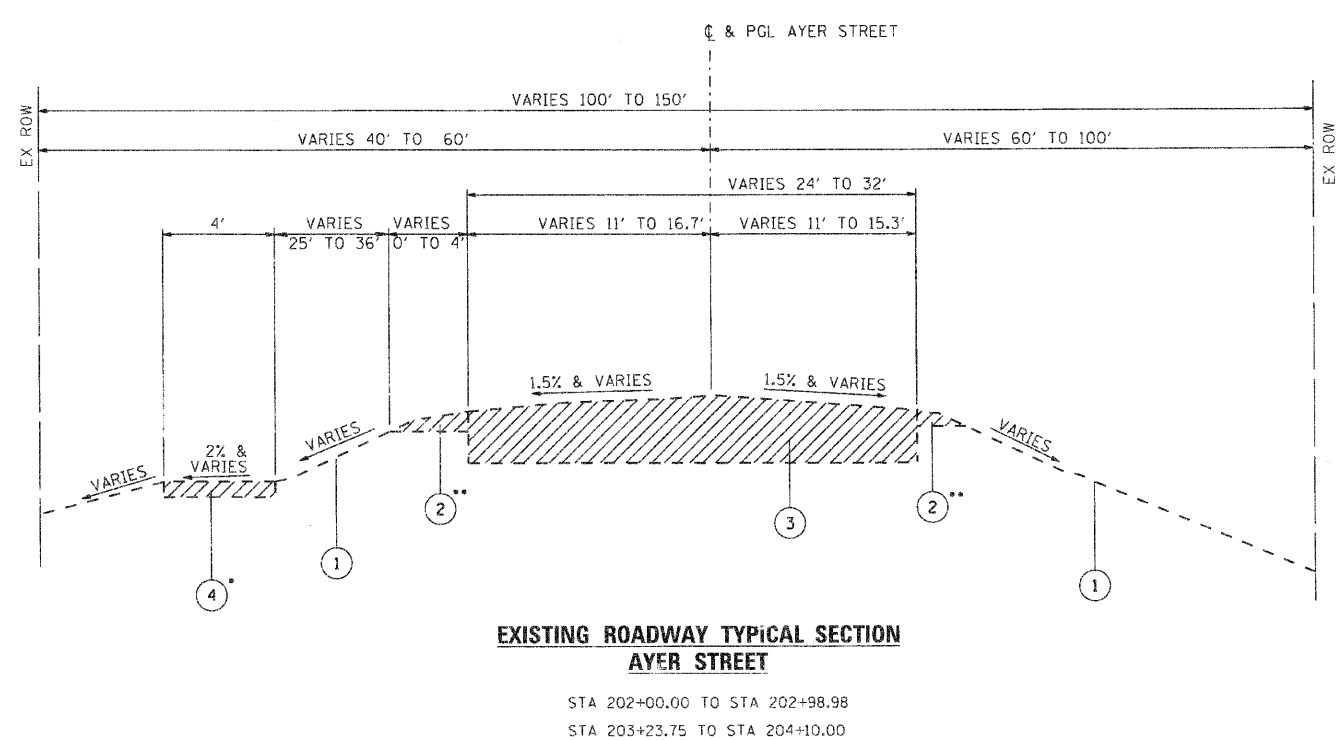


USER NAME = whoad	DESIGNED - JPC	REVISED -
FILE NAME = 080594-Seq.dgn	DRAWN - WJH	REVISED -
PLOT SCALE = N.T.S.	CHECKED - RGD	REVISED -
PLOT DATE = 8/18/2010	DATE - 8/18/10	REVISED -

STATE OF ILLINOIS
 DEPARTMENT OF TRANSPORTATION

AYER STREET OVER MOKELER CREEK SUMMARY OF QUANTITIES			
SCALE: N.T.S.	SHEET NO. OF	SHEETS	STA. _____ TO STA. _____

F.A.U. RTE. 0005	SECTION 06-00057-00-BR	COUNTY McHENRY	TOTAL SHEETS 22	SHEET NO. 3
FED. ROAD DIST. NO. 1 [ILLINOIS] FED. AID PROJECT			CONTRACT NO. 63508	



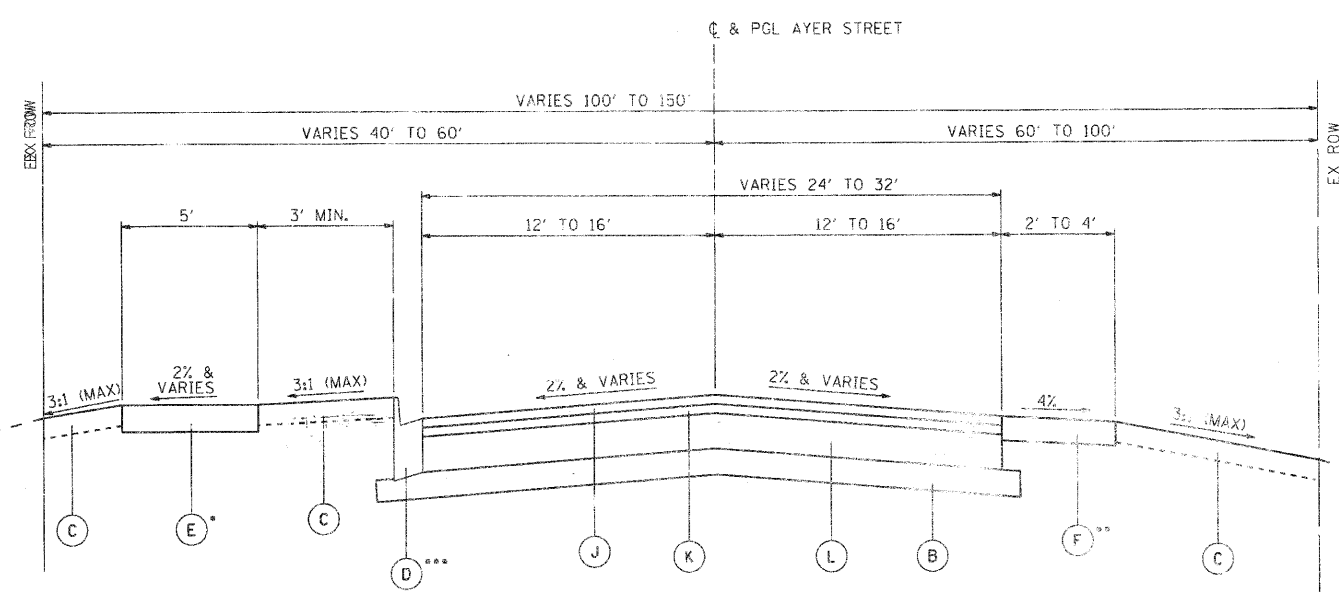
**EXISTING ROADWAY TYPICAL SECTION
AYER STREET**
STA 202+00.00 TO STA 202+98.98
STA 203+23.75 TO STA 204+10.00

EXISTING LEGEND

- ① EXISTING GROUND
- ② AGGREGATE SHOULDER
- ③ EXISTING HOT-MIX ASPHALT PAVEMENT
- ④ EXISTING SIDEWALK
- ⑤ EXISTING THREE CELL 10'x4' CAST-IN-PLACE CONCRETE BOX CULVERT
- ▨ INDICATES ITEMS TO BE REMOVED

PROPOSED LEGEND

- Ⓐ FURNISHED EXCAVATION
- Ⓑ SUB-BASE GRANULAR MATERIAL, TYPE B 4"
- Ⓒ TOPSOIL FURNISH AND PLACE, 4" AND SEEDING, CLASS 2A
- Ⓓ COMBINATION CONCRETE CURB & GUTTER, TYPE B-6.12
- Ⓔ PORTLAND CEMENT CONCRETE SIDEWALK 5 INCH
- Ⓕ AGGREGATE SHOULDERS, TYPE B, 6"
- Ⓖ PRECAST CONCRETE BOX CULVERT 10'x5' (M273)
- Ⓗ BOX CULVERT END SECTIONS, TYP.
- Ⓘ PARAPET RAILING
- Ⓙ HOT-MIX ASPHALT SURFACE COURSE MIX "C", N50
- Ⓚ HOT-MIX ASPHALT BINDER COURSE IL-19.0, N50
- Ⓛ HOT-MIX ASPHALT BASE COURSE, 8"



**PROPOSED ROADWAY TYPICAL SECTION
AYER STREET**
STA 202+00.00 TO STA 202+89.80
STA 203+25.30 TO STA 204+10.00

HOT-MIX ASPHALT REQUIREMENTS		AIR VOIDS @ N _{req}
FULL DEPTH PAVEMENT		
HOT-MIX ASPHALT SURFACE COURSE MIX "C" N50 (IL-9.5 mm) (2")	4% @ 50 Gyr.	
HOT-MIX ASPHALT BINDER COURSE IL-19.0, N50 (IL-9.5 mm) (2")	4% @ 50 Gyr.	
HOT-MIX ASPHALT BASE COURSE, 8" (IL-9.5 mm) (IN 3 LIFTS)	4% @ 50 Gyr.	
HOT-MIX ASPHALT DRIVEWAY PAVEMENT, 8"		
HOT-MIX ASPHALT SURFACE COURSE MIX "C" N50 (IL-9.5 mm) (2")	4% @ 50 Gyr.	
HOT-MIX ASPHALT BASE COURSE, 6" (IL-9.5 mm) (IN 2 LIFTS)	4% @ 50 Gyr.	

- THE UNIT WEIGHT USED TO CALCULATE ALL HOT-MIX ASPHALT SURFACE MIXTURE QUANTITIES IS 112 LBS/SQ YD/IN
- THE "AC TYPE" FOR POLYMERIZED HMA MIXES SHALL BE "SBS/SBR PG 70 -22" AND FOR NON-POLYMERIZED HMA THE "AC TYPE" SHALL BE "PG 64 -22" UNLESS MODIFIED BY DISTRICT ONE SPECIAL PROVISIONS. FOR "PERCENT RAP" SEE DISTRICT ONE SPECIAL PROVISIONS.

- SIDEWALK LOCATIONS:
EXISTING: STA. 203+18 TO STA 203+94 LT
PROPOSED: STA. 202+89.79 TO STA 203+94 LT
SIDEWALK IS SLOPE AT 2% TOWARD THE ROADWAY FROM STA. 202+89.79 TO STA. 203+25.30 LT
SIDEWALK IS SLOPE AT 2% AWAY FROM THE ROADWAY FROM STA. 203+25.30 TO STA. 203+94 LT
- ** AGGREGATE SHOULDER LOCATIONS:
EXISTING: STA. 202+00 TO STA 202+79.06 LT
STA. 202+00 TO STA. 202+22.72 RT
PROPOSED: STA. 202+00 TO STA 202+46.04 RT & LT
- *** CURB & GUTTER LOCATIONS:
EXISTING: STA. 203+87.87 TO STA 204+10 LT
PROPOSED: STA. 202+46.04 TO STA 204+10 RT & LT

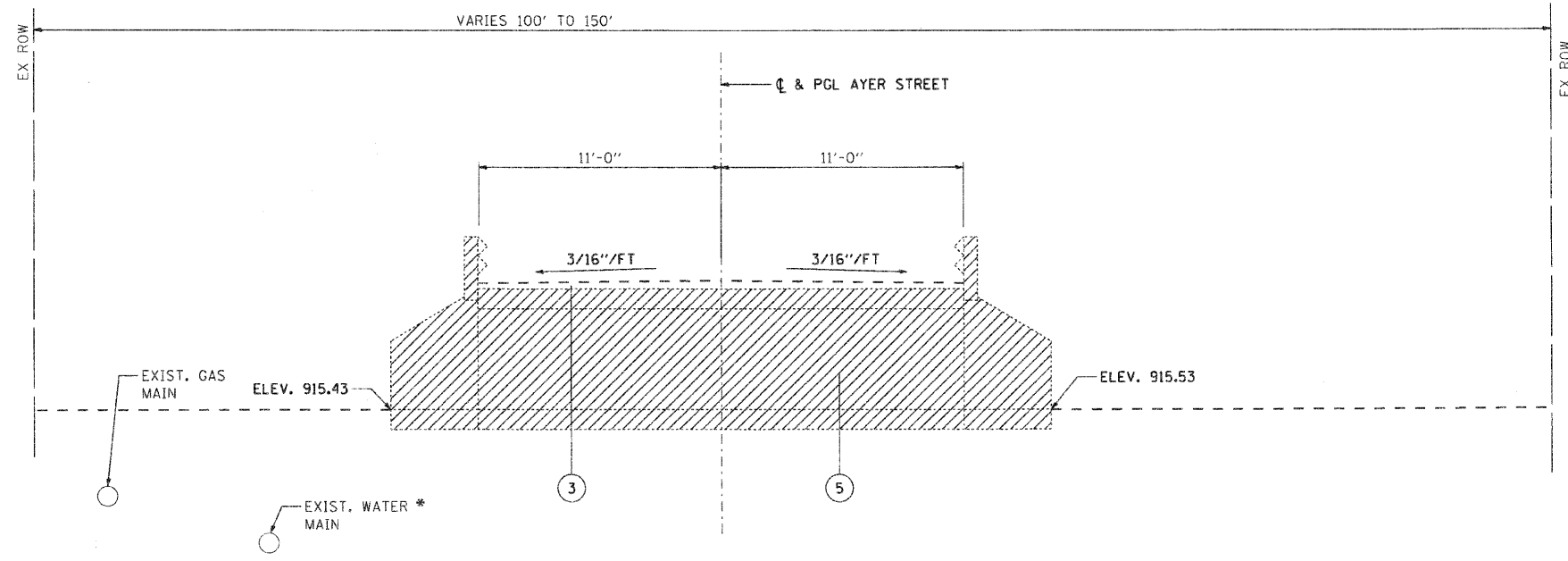
COMPANY NAME: SEC GROUP, INC.
PROJECT CONTACT: Robert G. Davies
CLIENT: City of Harvard
DATE PLOTTED: 8/16/2010 8:33:59 AM
FILE NAME: 080594.dwg
PLOT DATE: 8/16/2010
PEN TABLE: S:\p\art\22434.tbl

<p>SEC Group, Inc. 400 N. First Street Mesa, AZ 85203-2138 L 602.945.1778 F 602.945.1781 www.secgroup.com</p>	USER NAME = rwhood FILE NAME = 080594.dwg PLOT SCALE = N.T.S. PLOT DATE = 8/16/2010	DESIGNED - JPG DRAWN - WJH CHECKED - RGD DATE - 8/16/10	REVISED - REVISED - REVISED - REVISED -
---	--	--	--

**STATE OF ILLINOIS
DEPARTMENT OF TRANSPORTATION**

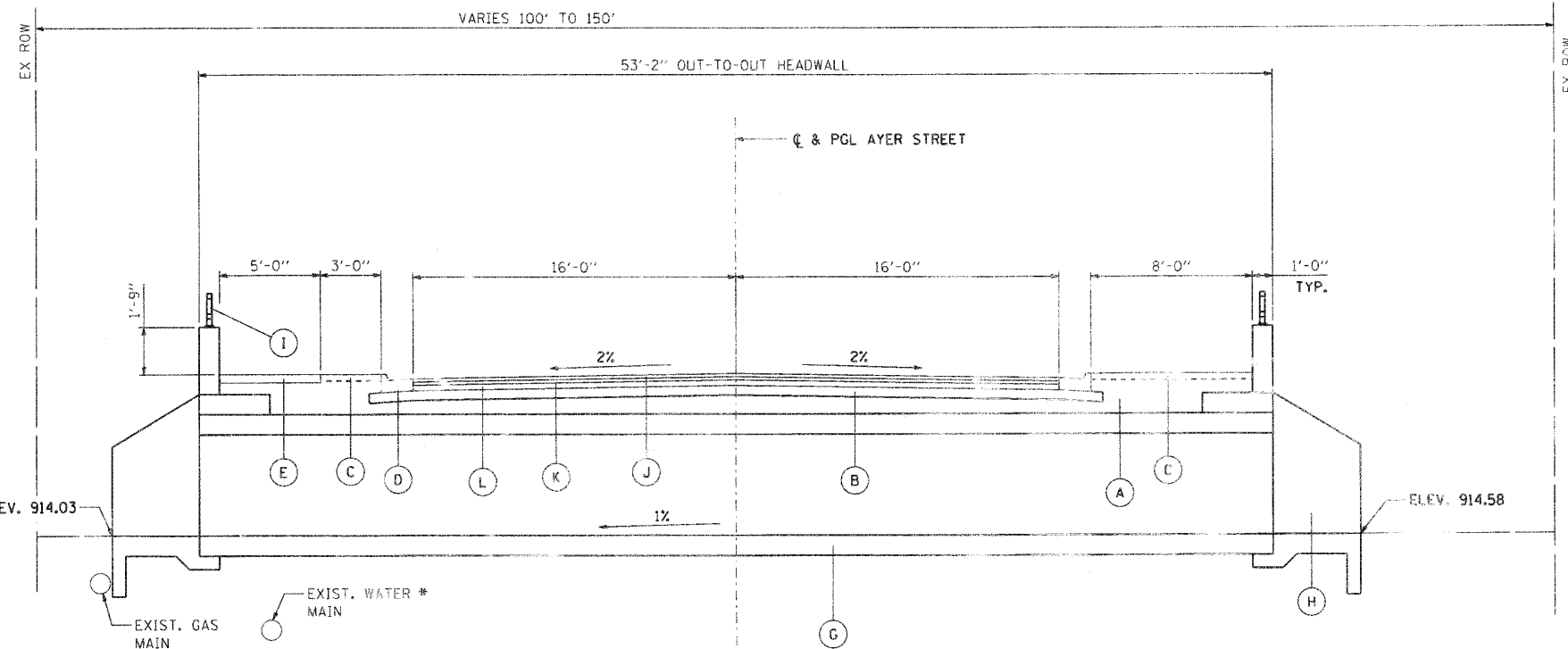
**AYER STREET OVER MOKELER CREEK
TYPICAL SECTIONS**
SCALE: N.T.S. SHEET NO. OF SHEETS STA. TO STA.

F.A.U. RTE. 0005	SECTION 06-00057-00-BR	COUNTY McHENRY	TOTAL SHEETS 22	SHEET NO. 4
CONTRACT NO. 63508				
FED. ROAD DIST. NO. 1 ILLINOIS FED. AID PROJECT				



**EXISTING ROADWAY TYPICAL SECTION
AYER STREET**

STA. 202+90.98 TO STA 203+23.75



**PROPOSED ROADWAY TYPICAL SECTION
AYER STREET**

STA. 202+89.80 TO STA 203+25.30

EXISTING LEGEND

- ① EXISTING GROUND
- ② AGGREGATE SHOULDER
- ③ EXISTING HOT-MIX ASPHALT PAVEMENT
- ④ EXISTING SIDEWALK
- ⑤ EXISTING THREE CELL 10'x4' CAST-IN-PLACE CONCRETE BOX CULVERT
- ▨ INDICATES ITEMS TO BE REMOVED

PROPOSED LEGEND

- (A) FURNISHED EXCAVATION
- (B) SUB-BASE GRANULAR MATERIAL, TYPE B 4"
- (C) TOPSOIL FURNISH AND PLACE, 4" AND SEEDING, CLASS 2A
- (D) COMBINATION CONCRETE CURB & CUTTER, TYPE B-6.12
- (E) PORTLAND CEMENT CONCRETE SIDEWALK 5 INCH
- (F) AGGREGATE SHOULDERS, TYPE B, 6"
- (G) PRECAST CONCRETE BOX CULVERT 10'x5' (M273)
- (H) BOX CULVERT END SECTIONS, TYP.
- (I) PARAPET RAILING
- (J) HOT-MIX ASPHALT SURFACE COURSE MIX "C", N50
- (K) HOT-MIX ASPHALT BINDER COURSE 1L-19.0, N50
- (L) HOT-MIX ASPHALT BASE COURSE, 8"

* EXISTING UTILITY DEPTHS ARE NOT KNOWN AT THIS TIME. USE EXPLORATION TRENCH, SPECIAL TO LOCATE PRIOR TO MOBILIZATION.

COMPANY NAME: SEC GROUP, INC.
PROJECT CONTACT: Robert G. Davies
CLIENT: City of Harvard
DATE PLOTTED: 8/16/2010 8:36:00 AM
FILE NAME: 080594_1502.dgn
PEN TABLE: S:\Project 2005\1401

SEC Group, Inc.
Professional Design Firm # 184-000108
An HR Group Company
420 N. York Street
Naperville, IL 60563-2138
TEL: 630.256.1779 FAX: 630.256.1751
www.secgroupinc.com
McHenry, IL 60051-1401

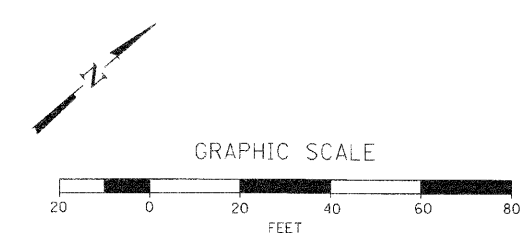
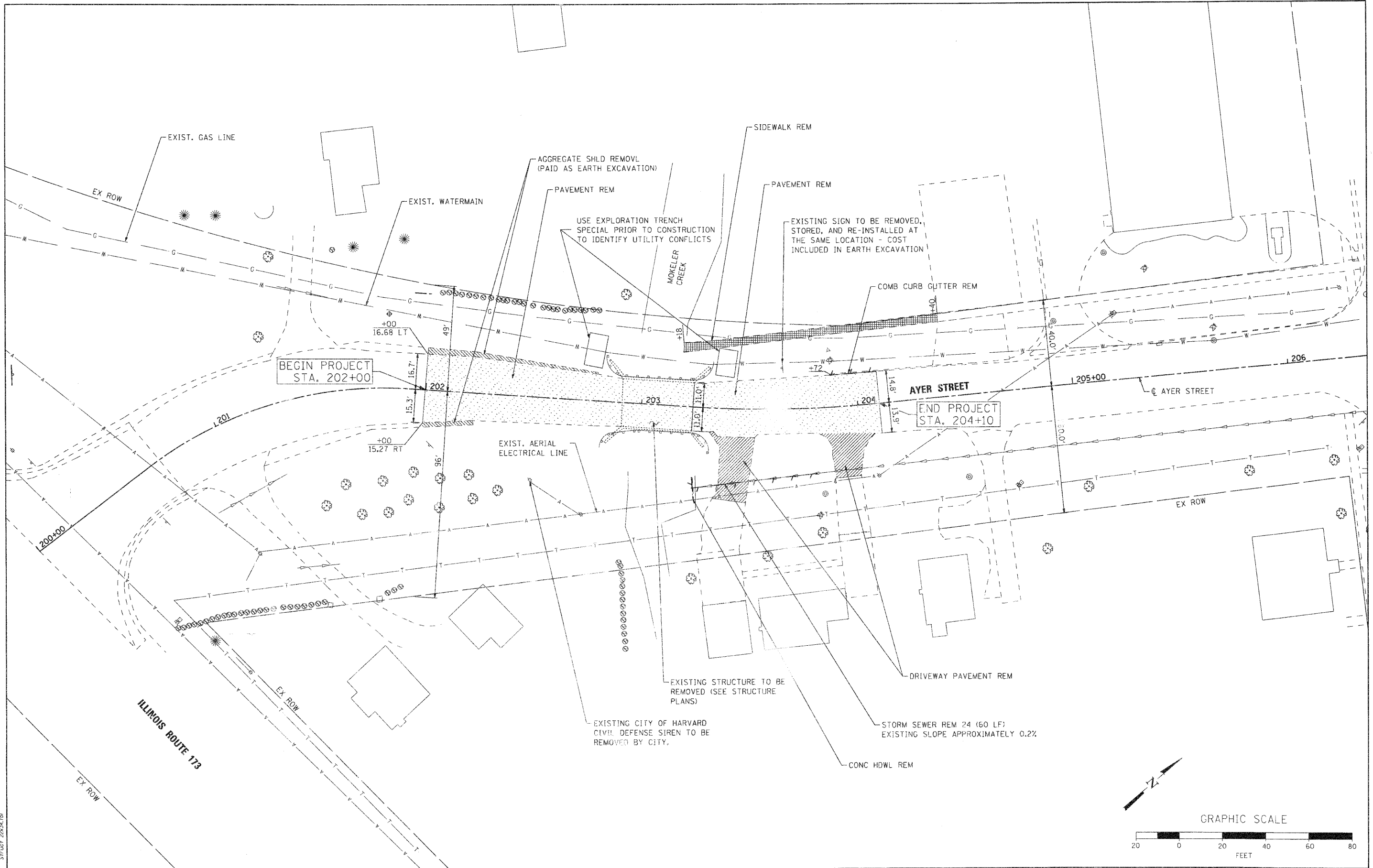
USER NAME = whood	DESIGNED - JPG	REVISED -
FILE NAME = 080594_1502.dgn	DRAWN - WJH	REVISED -
PLOT SCALE = N.T.S.	CHECKED - RGD	REVISED -
PLOT DATE = 8/16/2010	DATE - 8/16/2010	REVISED -

**STATE OF ILLINOIS
DEPARTMENT OF TRANSPORTATION**

**AYER STREET OVER MOKELER CREEK
TYPICAL SECTIONS**

SCALE: N.T.S. SHEET NO. OF SHEETS STA. TO STA.

F.A.U. RTEL	SECTION	COUNTY	TOTAL SHEETS	SHEET NO.
0005	06-00057-00-BR	McHENRY	22	5
CONTRACT NO.			63508	
FED. ROAD DIST. NO. 1 ILLINOIS FED. AID PROJECT				



COMPANY NAME: SEC GROUP, INC.
 PROJECT CONTACT: Robert G. Davies
 CLIENT: City of Harvard
 DATE PLOTTED: 8/16/2010 8:54:07 AM
 FILE NAME: 060594-Remo.dgn
 PLOT DATE: 8/16/2010
 PEN TABLE: Struct 22x24.tbl

SEC Group, Inc.
 420 N. Third Street
 Moline, IL 61704-2131
 309.398.1100 • 309.398.1131
 www.secgroupinc.com

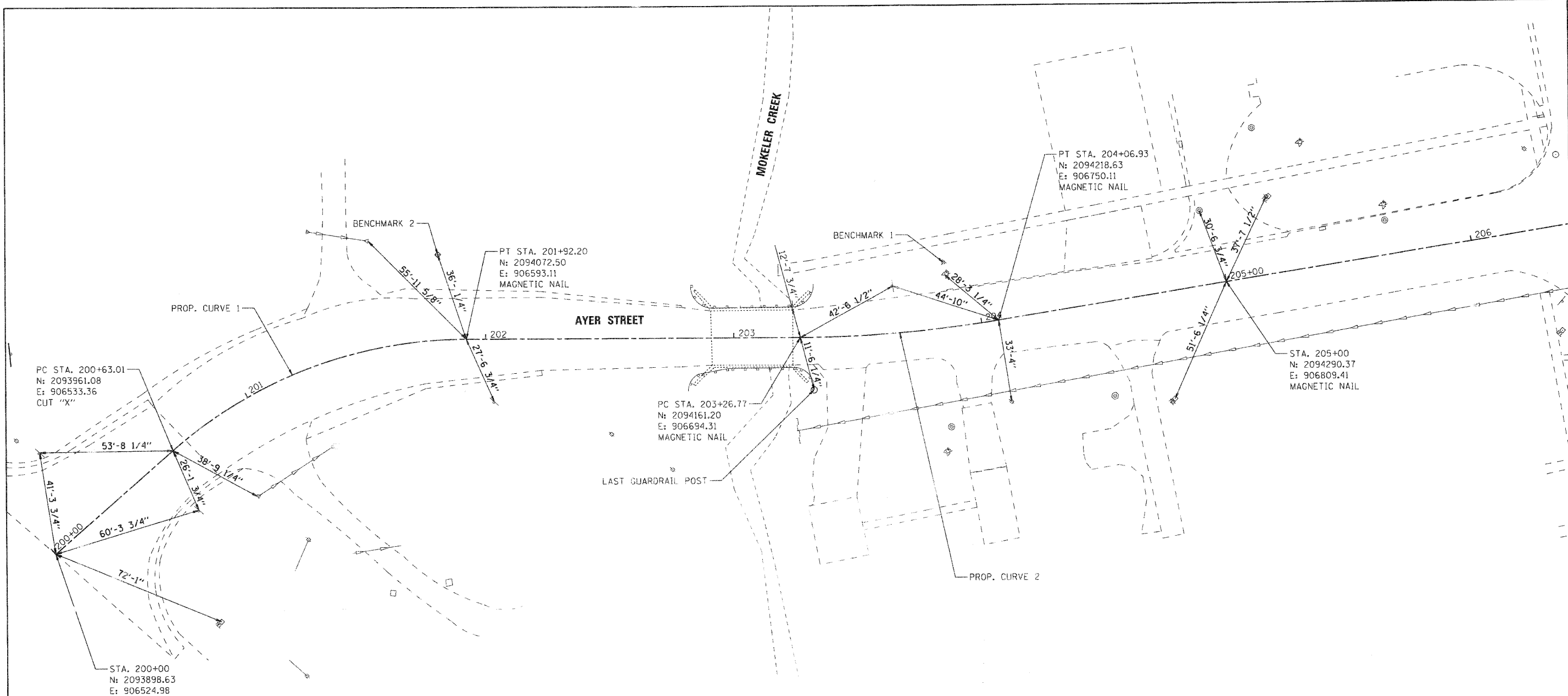
USER NAME = rhood	DESIGNED - JPG	REVISED -
FILE NAME = 060594-Remo.dgn	DRAWN - WJH	REVISED -
PLOT SCALE = 1"=28'	CHECKED - RGD	REVISED -
PLOT DATE = 8/16/2010	DATE - 8/16/10	REVISED -

STATE OF ILLINOIS
DEPARTMENT OF TRANSPORTATION

AYER STREET OVER MOKELER CREEK
REMOVAL PLAN

SCALE: 1"=20'	SHEET NO. OF SHEETS	STA. TO STA.
---------------	---------------------	--------------

F.A.U. RTE.	SECTION	COUNTY	TOTAL SHEETS	SHEET NO.
0005	06-00057-00-BR	MCHENRY	22	6
CONTRACT NO. 63508			ILLINOIS FED. AID PROJECT	



BENCHMARK

BENCHMARK 1: SOUTH WEST TAG BOLT ON FIRM FIRE HYDRANT NORTH OF MOKELER CREEK AND ON THE WEST SIDE OF AYER STREET. ELEVATION = 922.24 (NAVD88)

BENCHMARK 2: BBOX LOCATED ON WEST SIDE OF AYER STREET IN FRONT OF HOUSE LOCATED AT 603 S. AYER STREET. ELEVATION = 918.54 (NAVD88)

PROP. CURVE 1

PI STA. = 201+30.53
 Δ = 41° 07' 14" (RT)
 D = 31° 49' 52"
 R = 180.00'
 T = 67.52'
 L = 129.18'
 E = 12.25'
 e = ----
 T.R. = ----
 S.E. RUN = ----
 P.C. STA = 200+63.01
 P.T. STA = 201+92.20

PROP. CURVE 2

PI STA. = 203+66.94
 Δ = 9° 11' 12" (LT)
 D = 11° 27' 33"
 R = 500.00'
 T = 40.17'
 L = 80.17'
 E = 1.61'
 e = ----
 T.R. = ----
 S.E. RUN = ----
 P.C. STA = 203+26.77
 P.T. STA = 204+06.93



GRAPHIC SCALE



COMPANY NAME: SEC GROUP, INC.
 PROJECT CONTACT: Robert C. Davies
 CLIENT: City of Harvard
 DATE PLOTTED: 8/16/2010 8:34:12 AM
 FILE NAME: 080594-Ties.dgn
 PLOT DRIVER: pdrcarl
 PLOT TABLE: S:\proj\2234.dwg

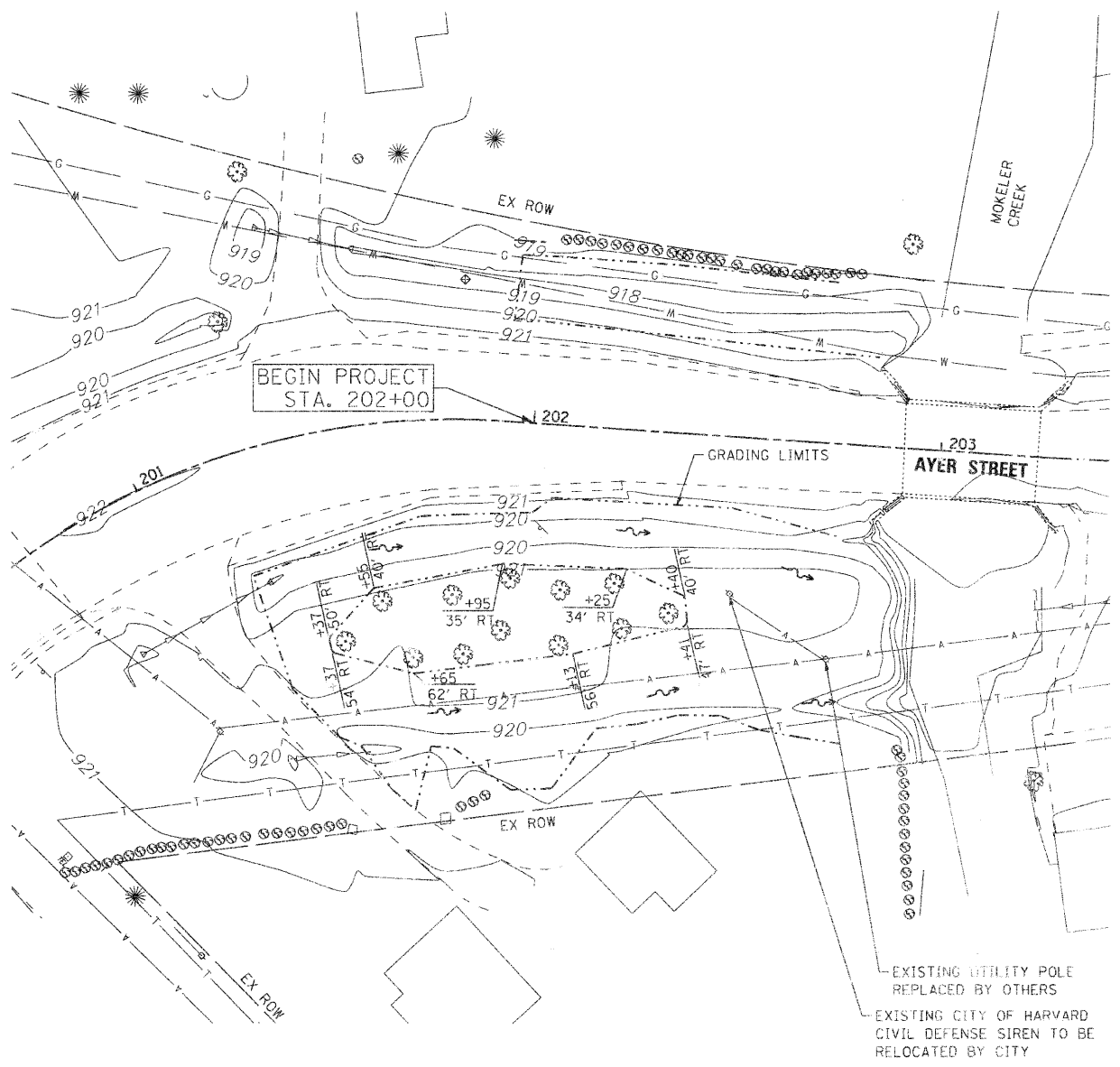
SEC Group, Inc.
 An HR Green Company
 423 N. First Street
 Moline, IL 61905-1138
 815.395.1778 | 815.395.1781
 www.secgroup.com

USER NAME = rwood	DESIGNED - JJP	REVISED -
FILE NAME = 080594-Ties.dgn	DRAWN - WJH	REVISED -
PLOT SCALE = 1"=20'	CHECKED - RGD	REVISED -
PLOT DATE = 8/16/2010	DATE = 8/16/10	REVISED -

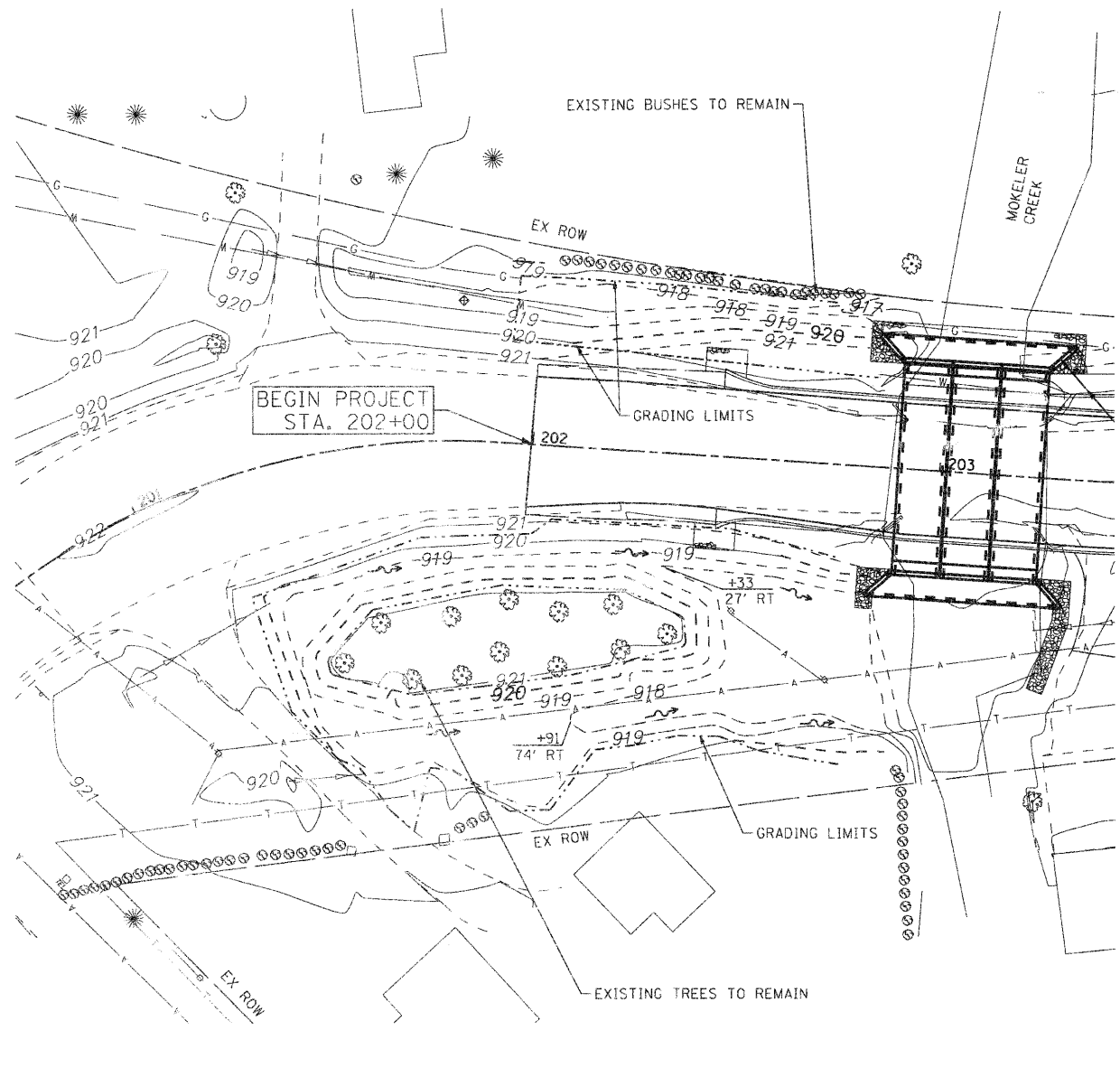
**STATE OF ILLINOIS
 DEPARTMENT OF TRANSPORTATION**

AYER STREET OVER MOKELER CREEK ALIGNMENT, TIES			
SCALE: 1"=20'	SHEET NO.	OF SHEETS	STA. TO STA.

F.A.U. RTE.	SECTION	COUNTY	TOTAL SHEETS	SHEET NO.
0005	06-00057-00-BR	McHENRY	22	7
FED. ROAD DIST. NO. 1 ILLINOIS FED. AID PROJECT			CONTRACT NO. 63508	



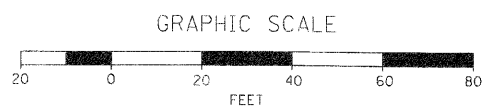
EXISTING GRADING



PROPOSED GRADING

SEE CROSS SECTIONS FOR ADDITIONAL INFORMATION

LEGEND	
EXISTING TOPO LINE	———
PROPOSED TOPO LINE	- - - - -
GRADING LIMITS	- · - · -



SEC GROUP, INC.
 PROJECT CONTACT: Robert G. Davies
 DATE PLOTTED: 8/16/2010 8:36:19 AM
 FILE NAME: 080594-Grading.dgn
 PLOT DRIVER: pdfplot
 PEN TABLE: Struct 22x34.tbl

SEC Group, Inc.
 An HR Group Company
 401 N. First Street
 Moline, IL 61705-2136
 815.285.1775 • Fax 815.285.1781
 www.secgroup.com
 Moline, IL • Chicago, IL

USER NAME = whood	DESIGNED - JPG	REVISED -
FILE NAME = 080594-Grading.dgn	DRAWN - WJH	REVISED -
PLOT SCALE =	CHECKED - RGD	REVISED -
PLOT DATE = 8/16/2010	DATE - 8/16/10	REVISED -

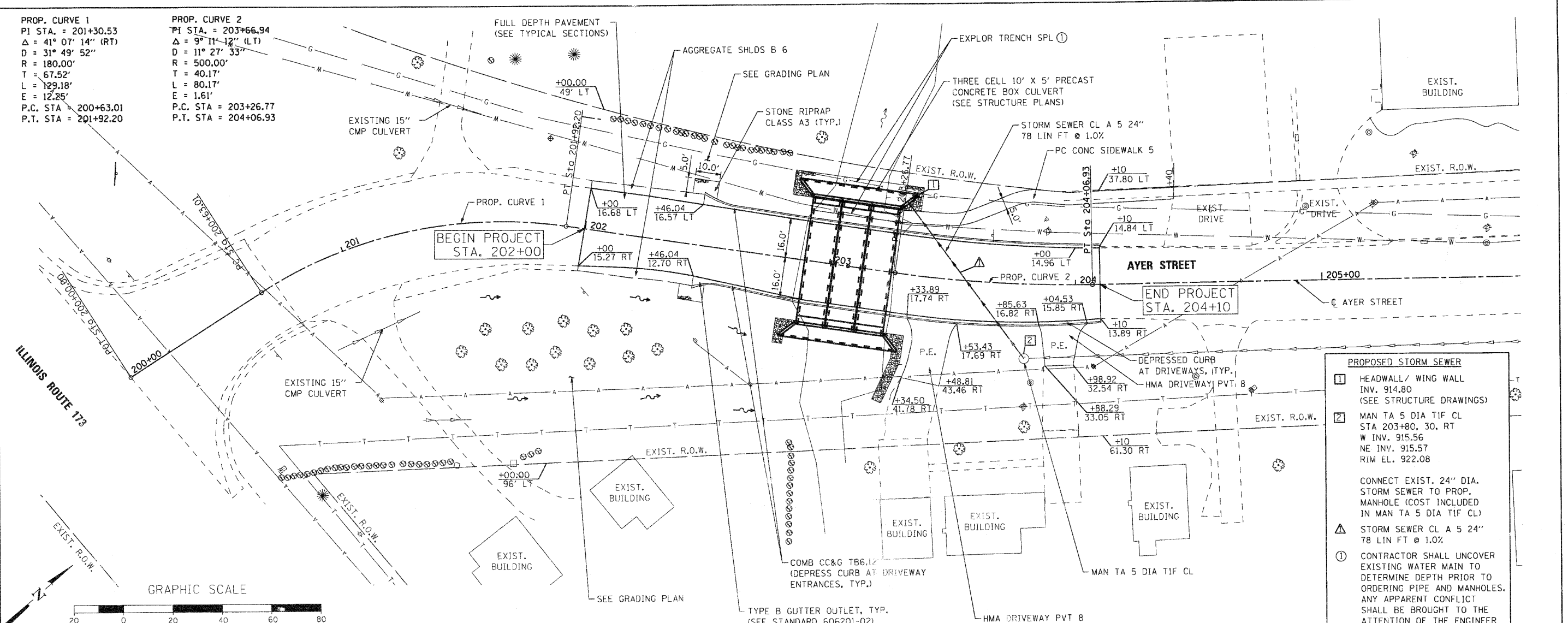
**STATE OF ILLINOIS
 DEPARTMENT OF TRANSPORTATION**

AYER STREET OVER MOKELER CREEK GRADING PLAN				
SCALE:	SHEET NO.	OF	SHEETS	STA. TO STA.

F.A.U. RTE.	SECTION	COUNTY	TOTAL SHEETS	SHEET NO.
0005	06-00057-00-BR	McHENRY	22	8
CONTRACT NO. 63508				
FED. ROAD DIST. NO. 1 ILLINOIS FED. AID PROJECT				

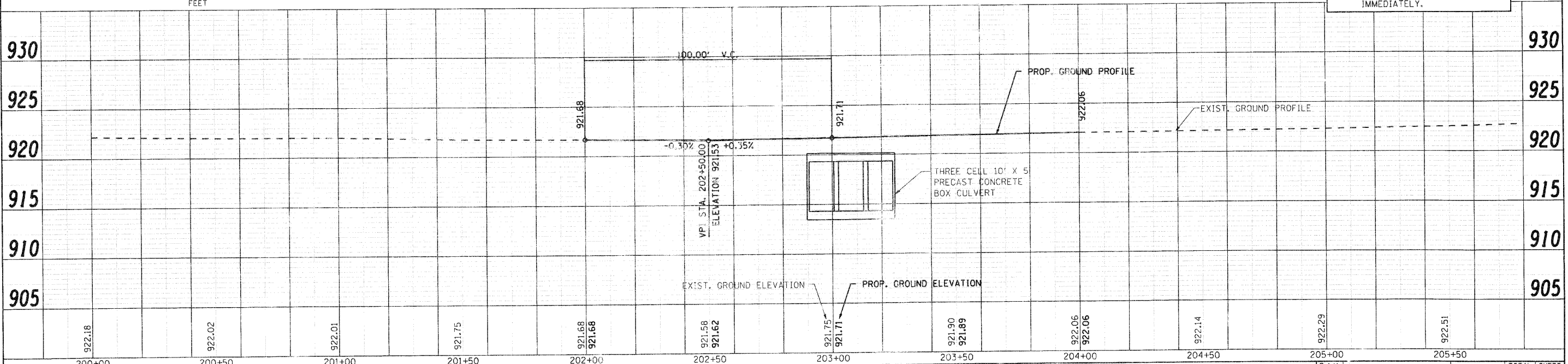
PROP. CURVE 1
 PI STA. = 201+30.53
 Δ = 41° 07' 14" (RT)
 D = 31° 49' 52"
 R = 180.00'
 T = 67.52'
 L = 129.18'
 E = 12.85'
 P.C. STA = 200+63.01
 P.T. STA = 201+92.20

PROP. CURVE 2
 PI STA. = 203+66.94
 Δ = 9° 11' 12" (LT)
 D = 11° 27' 33"
 R = 500.00'
 T = 40.17'
 L = 80.17'
 E = 1.61'
 P.C. STA = 203+26.77
 P.T. STA = 204+06.93



PROPOSED STORM SEWER

- 1 HEADWALL / WING WALL
INV. 914.80
(SEE STRUCTURE DRAWINGS)
- 2 MAN TA 5 DIA TIF CL
STA 203+80, 30, RT
W INV. 915.56
NE INV. 915.57
RIM EL. 922.08
- △ STORM SEWER CL A 5 24"
78 LIN FT @ 1.0%
- ① CONTRACTOR SHALL UNCOVER
EXISTING WATER MAIN TO
DETERMINE DEPTH PRIOR TO
ORDERING PIPE AND MANHOLES.
ANY APPARENT CONFLICT
SHALL BE BROUGHT TO THE
ATTENTION OF THE ENGINEER
IMMEDIATELY.



COMPANY NAME: SEC GROUP, INC.
 CONTACT: J. C. ...
 CLIENT: City of Harvard
 DATE PLOTTED: 8/16/2010 8:43:30 AM
 FILE NAME: 060594-Prop.dgn
 PLOT DRIVER: Pdf.plt
 STRUCT: 22x24.tbl

SEC Group, Inc.
 425 N. First Street,
 Moline, IL 61701-2136
 1-815-395-1778 F 815-395-1791
 www.secgroupinc.com

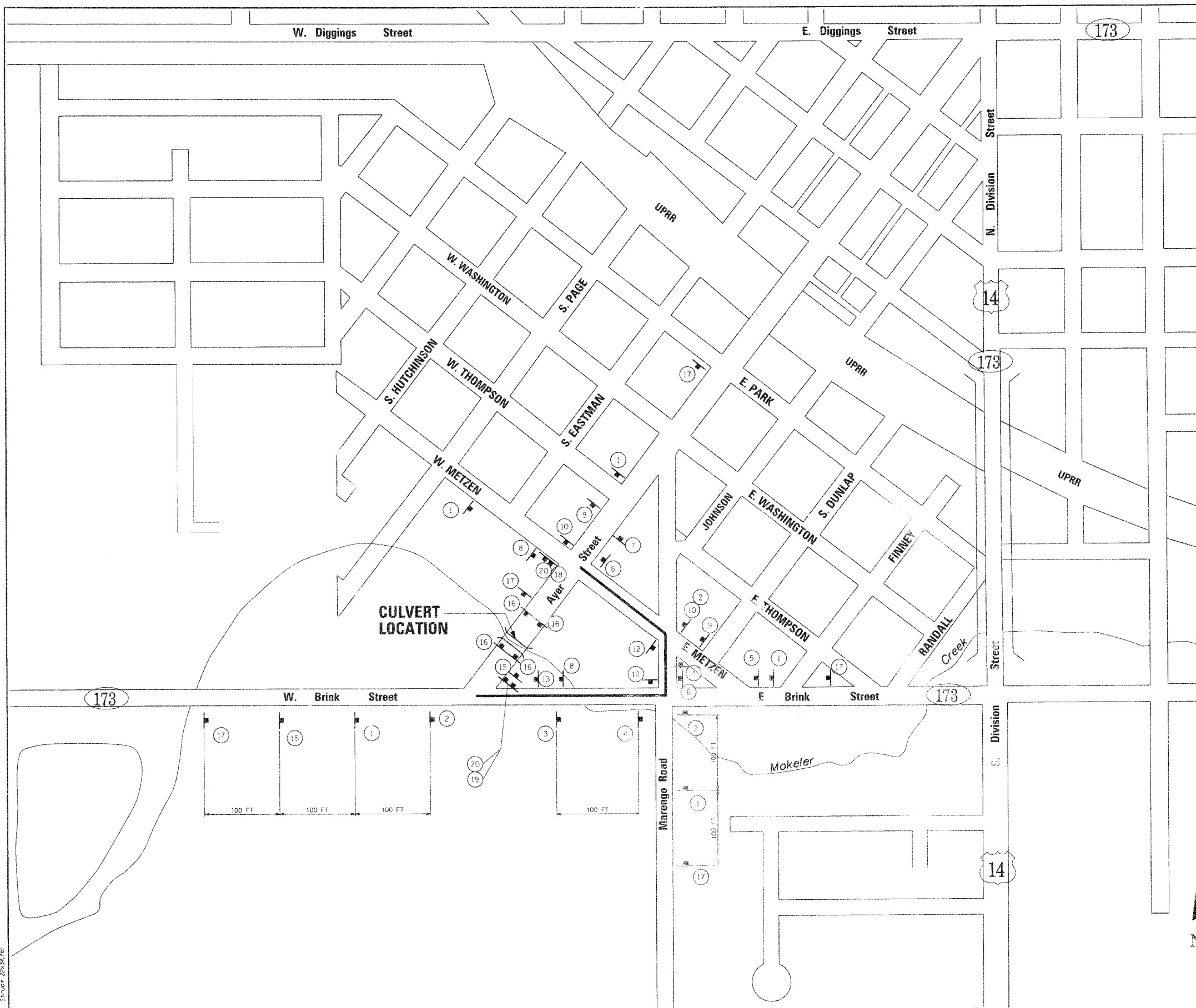
USER NAME = jwood	DESIGNED - JPG	REVISED -
FILE NAME = 060594-Prop.dgn	DRAWN - WJH	REVISED -
PLOT SCALE = 1"=20'	CHECKED - RGD	REVISED -
PLOT DATE = 8/16/2010	DATE = 8/16/10	REVISED -

**STATE OF ILLINOIS
 DEPARTMENT OF TRANSPORTATION**

**AYER STREET OVER MOKELER CREEK
 PROPOSED PLAN AND PROFILE**

SCALE: 1"=20' SHEET NO. 6 OF SHEETS STA. 6+50 TO STA12+00

F.A.U. RTE. 0005	SECTION 06-00057-00-BR	COUNTY McHENRY	TOTAL SHEETS 22	SHEET NO. 9
FED. ROAD DIST. NO. 1 ILLINOIS FED. AID PROJECT			CONTRACT NO. 63508	



- ROAD CLOSURE GENERAL NOTES:**
1. THE CONTRACTOR WILL BE ALLOWED TO CLOSE AYER STREET, BETWEEN ILLINOIS ROUTE 173 (WEST BRINK STREET) AND METZEN ROAD FOR THE DURATION OF THE BRIDGE CONSTRUCTION.
 2. THE DETOUR ROUTE SHALL BE POSTED PRIOR TO CLOSING THE ROAD.
 3. ALL TRAFFIC CONTROL WORK ASSOCIATED WITH THE ROAD CLOSURE, SIGNING, TEMPORARY FENCING, TEMPORARY CONCRETE BARRIER AND BARRICADING SHALL BE INCLUDED IN THE PAY ITEM FOR 'TRAFFIC CONTROL AND PROTECTION FOR TEMPORARY DETOUR'.
 4. THE CONTRATOR SHALL GIVE THE ENGINEER AND THE COUNTY A 72 HOUR NOTICE PRIOR TO PLACING THE ADVANCE NOTICE SIGNS.
 5. ADVANCE NOTICE SIGN (17) SHALL BE PLACED TWO WEEKS PRIOR TO CLOSING THE ROADWAY.
 6. ALL SIGNS SHALL CONFORM TO SPACING REQUIREMENTS SET FORTH IN THE 'MANUAL ON UNIFORM TRAFFIC CONTROL DEVICES FOR STREETS AND HIGHWAYS'. SIGN SIZES AND SPECIFICATIONS SHALL CONFORM WITH IDOT STANDARDS IN PLACE AT THE TIME OF CONSTRUCTION.

SIGN LEGEND

①		W20-2-4848	⑪		SPECIAL
②		SPECIAL	⑫		SPECIAL
③		SPECIAL	⑬		SPECIAL
④		SPECIAL	⑭		R11-3A-6030
⑤		SPECIAL	⑮		W20-2-4848
⑥		SPECIAL	⑯		R-11-2-4830 (TYPE III BARRICADE)
⑦		SPECIAL	⑰		INFO 60X30
⑧		SPECIAL	⑱		M4-10L
⑨		SPECIAL	⑲		M4-10R
⑩		SPECIAL	⑳		M4-9L-3030

LEGEND
 PROPOSED DETOUR ROUTE

COMPANY NAME: SEC GROUP, INC.
 PROJECT CONTACT: Robert C. Davies
 CLIENT: City of Harvard
 DATE PLOTTED: 8/16/2010 8:46:35 AM
 FILE NAME: 080594-01r.dgn
 PLOT TABLE: 5/1/01.ctb

SEC Group, Inc.		USER NAME = r.wood	DESIGNED - JPG	REVISED -
400 N. First Street Moline, IL 61704-1138 1-815-338-1778 • 815-338-1781 www.secgroup.com		FILE NAME = 080594-01r.dgn	DRAWN - W.JH	REVISED -
		PLOT SCALE = 1"=20'	CHECKED - RGD	REVISED -
		PLOT DATE = 8/16/2010	DATE - 8/16/10	REVISED -

**STATE OF ILLINOIS
 DEPARTMENT OF TRANSPORTATION**

**AYER STREET OVER MOKELER CREEK
 TEMPORARY DETOUR PLAN**

SCALE: 1"=20' SHEET NO. OF SHEETS STA. TO STA.

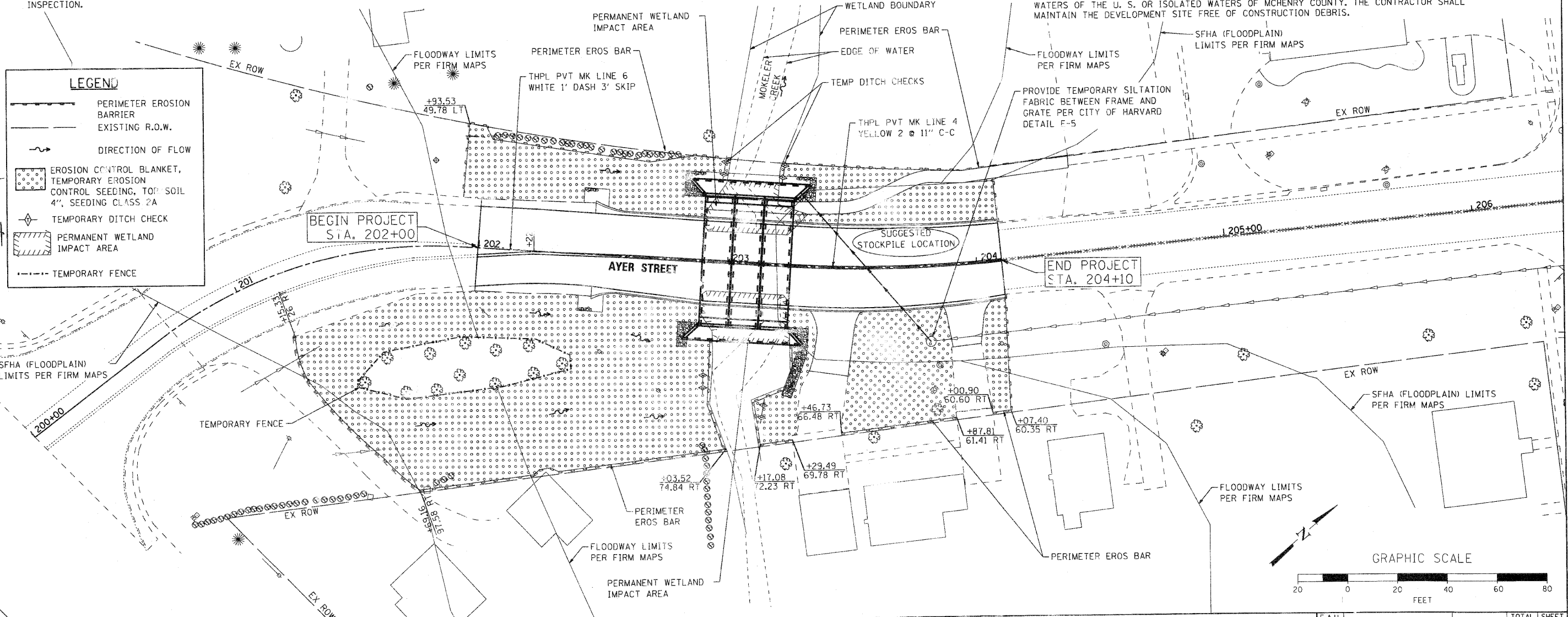
F.A.U. R.T.E.:	SECTION	COUNTY	TOTAL SHEETS	SHEET NO.
0005	06-00057-00-BR	McHENRY	22	10
FED. ROAD DIST. NO. 1 (ILLINOIS) FED. AID PROJECT			CONTRACT NO. 63508	

EROSION CONTROL NOTES

1. THE CONTRACTOR WILL BE REQUIRED TO IMPLEMENT AND MAINTAIN EROSION CONTROL MEASURES IMMEDIATELY AFTER STRIPPING OF EXISTING VEGETATION.
2. THE QUANTITIES SHOWN FOR TEMPORARY DITCH CHECKS ARE MEASURED PER FOOT, HAY OR STRAW BALES ARE NOT TO BE USED.
3. STOCKPILES OF SOIL AND OTHER BUILDING MATERIALS TO REMAIN IN PLACE MORE THAN SEVEN (7) DAYS SHALL BE FURNISHED WITH EROSION AND SEDIMENT CONTROL MEASURES (I.E. PERIMETER SILT FENCE). STOCKPILES TO REMAIN IN PLACE FOR 14 DAYS OR MORE SHALL RECEIVE TEMPORARY SEEDING.
4. THE CONTRACTOR SHALL TAKE ALL PRECAUTIONS TO PREVENT POLLUTION OF STORM WATER AND SHALL FOLLOW IEPA & IDOT CONSTRUCTION MEMORANDUM NO. 95-60.
5. STABILIZATION MEASURES SHALL BE INITIATED WITHIN 7 DAYS OF CONSTRUCTION ACTIVITY TEMPORARILY OR PERMANENTLY CEASING IN AREAS WHERE IT WILL NOT OCCUR FOR A PERIOD OF 14 OR MORE CALENDAR DAYS.
6. THE CONTRACTOR SHALL APPLY TEMPORARY EROSION CONTROL SEEDING TO ALL ERODIBLE BARE EARTH AREAS WITHIN THE CONTRACT LIMITS EACH WEEK, REGARDLESS OF WEATHER CONDITIONS OR PROGRESS OF THE WORK, UNLESS OTHERWISE DIRECTED BY THE ENGINEER. ERODIBLE EMBANKMENT AND EXCAVATION AREAS WHERE WORK IS IN PROGRESS SHALL BE INCLUDED ON THE AREAS TO BE SEED. SEE BDE SPECIAL PROVISION FOR TEMPORARY EROSION CONTROL.
7. THE CONTRACTOR WILL BE RESPONSIBLE FOR CONDUCTING REGULAR SITE INSPECTIONS TO VERIFY THAT THE BEST MANAGEMENT PRACTICES (BMP'S) ARE FUNCTIONING PROPERLY AND DETERMINE IF ADDITIONAL PRACTICES ARE NEEDED TO MAINTAIN PERMIT COMPLIANCE. MCHENRY WILL MONITOR THE PROJECT FOR PERMIT COMPLIANCE.
8. THE MCHENRY SOIL AND WATER CONSERVATION DISTRICT MUST BE NOTIFIED ONE WEEK PRIOR TO THE PRE-CONSTRUCTION CONFERENCE, ONE WEEK PRIOR TO THE COMMENCEMENT OF LAND DISTURBING ACTIVITIES, AND ONE WEEK PRIOR TO FINAL INSPECTION.

9. LOW GROUND-PRESSURE EQUIPMENT WILL BE USED FOR ALL WORK WITHIN WETLANDS.
10. THE SOIL EROSION AND SEDIMENT CONTROL PRACTICES WILL BE INSPECTED WEEKLY AND AFTER 1/2 INCH OF RAIN OR MORE BY THE INDIVIDUAL ON SITE IN CHARGE OF SOIL EROSION AND SEDIMENT CONTROL DURING THE CONSTRUCTION OF THE PROJECT. THE ENGINEER WILL BE RESPONSIBLE FOR THE EROSION AND SEDIMENT CONTROL INSPECTIONS.
11. EROSION CONTROL BLANKET SHALL BE INSTALLED TO ALL DISTURBED AREAS WITH SLOPES EQUAL TO OR GREATER THAN 5H:1V AND IN CRITICAL AREAS (I.E. DETENTION BASIN PERIMETERS, STREAMBANKS, BERMS, ETC.) IMMEDIATELY UPON FINAL GRADING.
12. SILT FENCE SHALL BE INSTALLED FOLLOWING THE COMPLETION AND STABILIZATION OF THE STORMWATER FACILITIES AND WILL REMAIN IN PLACE UNTIL THE CONTRIBUTING AREA IS STABILIZED.
13. ALL ADJACENT STREETS AND DRIVEWAYS MUST BE KEPT CLEAR OF DEBRIS, INSPECTED DAILY AND CLEANED WHEN NECESSARY OR DIRECTED BY THE ENGINEER.
14. ALL SOIL EROSION AND SEDIMENT CONTROL PRACTICES ARE REFERENCED FROM THE ILLINOIS URBAN MANUAL.
15. ALL MATERIALS USED FOR TEMPORARY CONSTRUCTION ACTIVITIES WILL BE REMOVED TO UPLAND AREAS IMMEDIATELY FOLLOWING COMPLETION OF THE CONSTRUCTION ACTIVITY.
16. A STAMPED AND SIGNED COPY OF THE APPROVED SOIL EROSION AND SEDIMENT CONTROL PLAN SHALL BE MAINTAINED ON THE SITE AT ALL TIMES AND BE PRESENTED WHEN REQUESTED BY MCHENRY SWCD, U.S. ARMY CORP OF ENGINEERS OR ANY OTHER AUTHORIZED AGENCY.
17. SEEDING MIXTURE SHALL BE CLASS TYPE 2A AS DETAILED IN SECTION 250 OF THE STANDARD SPECIFICATIONS. PLANTING TIMES ARE LIMITED TO EARLY SPRING TO JUNE 1 AND AUGUST 1 TO SEPTEMBER 1.

18. THE CONTRACTOR WILL BE REQUIRED TO HAVE A DESIGNATED CONCRETE WASH OUT AREA DURING ALL CONCRETE POURS.
19. THE MCHENRY COUNTY SOIL AND WATER CONSERVATION DISTRICT AND THE ARMY CORPS OF ENGINEERS MUST BE IN AGREEMENT WITH METHOD OF DIVERSION/ISOLATION PRIOR TO THE COMMENCEMENT OF CONSTRUCTION. ONCE WORK IN THIS AREA BEGINS, PRIORITY SHALL BE GIVEN TO THE COMPLETION OF THE WORK AND FINAL STABILIZATION OF ALL DISTURBED AREAS.
20. IF BYPASS PUMPING IS NECESSARY, THE OUTLET SHALL BE PLACED ON A NON-ERODIBLE, ENERGY DISSIPATING SURFACE PRIOR TO REJOINING THE STREAM FLOW.
21. WHEN DEWATERING THE CONSTRUCTION AREA, ALL WATER MUST BE FILTERED PRIOR TO REJOINING THE STREAM FLOW. DEWATERING METHODS SHALL BE CHOSEN BASED ON SITE CONDITIONS, CONSTRAINTS AND SEDIMENT LOADS.
22. THE SIDE SLOPES MUST BE RESEED AND STABILIZED WITH AN APPROPRIATE EROSION CONTROL BLANKET PRIOR TO ACCEPTING FLOWS.
23. ALL EROSION CONTROL MEASURES SHALL CONFORM WITH THE CITY OF HARVARD DETAILS.
24. A STABILIZED MAT OF AGGREGATE UNDERLAIN WITH FILTER FABRIC CLOTH (OR OTHER APPROPRIATE MEASURES) SHALL BE LOCATED AT ANY POINT WHERE TRAFFIC WILL BE ENTERING OR LEAVING A CONSTRUCTION -SITE OF A MAJOR DEVELOPMENT TO OR FROM A PUBLIC RIGHT-OF-WAY, STREET, ALLEY, OR PARKING AREA. ANY SEDIMENT OR SOIL REACHING AN IMPROVED PUBLIC RIGHT-OF-WAY, STREET, ALLEY, OR PARKING AREA SHALL BE REMOVED BY SCRAPING OR STREET CLEANING AS ACCUMULATIONS WARRANT AND TRANSPORTED TO A CONTROLLED SEDIMENT DISPOSAL AREA. THIS WORK SHALL BE INCIDENTAL TO THE CONTRACT.
25. SOIL STOCKPILES SHALL NOT BE LOCATED WITHIN THE FLOODPLAIN OR WATERS OF THE UNITED STATES OR ISOLATED WATERS OF MCHENRY COUNTY.
26. THE CONTRACTOR SHALL PROVIDE ADEQUATE RECEPTACLES FOR THE DEPOSITION OF ALL CONSTRUCTION MATERIAL DEBRIS GENERATED DURING THE DEVELOPMENT PROCESS. THE CONTRACTOR SHALL NOT CAUSE OR PERMIT THE DUMPING, DEPOSITING, DROPPING, THROWING, DISCARDING, OR LEAVING OF CONSTRUCTION MATERIAL DEBRIS UPON OR INTO ANY DEVELOPMENT SITE, CHANNEL, WATERS OF THE U. S. OR ISOLATED WATERS OF MCHENRY COUNTY. THE CONTRACTOR SHALL MAINTAIN THE DEVELOPMENT SITE FREE OF CONSTRUCTION DEBRIS.



SEC GROUP, INC.
 CONTACT: Robert C. Daniels
 CLIENT: City of Harvard
 DATE PLOTTED: 8/16/2010 8:24:42 AM
 FILE NAME: 080594-plan-01-erosion_restoration.dgn
 PLOT DRIVER: pdfplot
 PLOT TABLE: Struct 22x34.tbl

SEC Group, Inc.
 All Rights Reserved
 480 N. First Street
 Mchenry, IL 61450-7020
 T: 815.365.1775 F: 815.365.1751
 www.secgroup.com

USER NAME: rwhood	DESIGNED: JPC	REVISED:
FILE NAME: 080594-plan-01-erosion_restoration.dgn	DRAWN: WJH	REVISED:
PLOT SCALE: 1"=20'	CHECKED: RGD	REVISED:
PLOT DATE: 8/16/2010	DATE: 8/16/10	REVISED:

**STATE OF ILLINOIS
 DEPARTMENT OF TRANSPORTATION**

**AYER STREET OVER MOKELER CREEK
 PAVEMENT MARKING, EROSION CONTROL, AND RESTORATION PLAN**

SCALE: 1"=20' SHEET NO. OF SHEETS STA. TO STA.

F.A.U. RTE.	SECTION	COUNTY	TOTAL SHEETS	SHEET NO.
0005	06-00057-00-BR	MCHENRY	22	11
CONTRACT NO. 63508				
FED. ROAD DIST. NO. 1 [ILLINOIS] FED. AID PROJECT				

Benchmarks:

- Benchmark 1: South West tag bolt on first fire hydrant north of Mokeler Creek and on the west side of Ayer Street.
Elevation = 922.24 (NAVD88)
- Benchmark 2: B-box located on the west side of Ayer Street, in front of the house located at 603 S. Ayer Street.
Elevation = 918.54 (NAVD88)

Existing Structure: Existing SN 056-6201, constructed in 1920, is a three (3) cell cast-in-place reinforced concrete box culvert with a width of 34' -0". The length measures 24' -3" out-to out of headwalls. The individual cells are 10' -0" x 4' -0" with 1'-0" center and side walls. Structure to be removed and replaced. Road to be closed during construction. Traffic to be maintained with a temporary detour of Ayer Street during construction.

Salvage: No Salvage

* Contractor shall uncover existing water main to determine depth prior to ordering pipe and manholes. Any apparent conflicts shall be brought to the attention of the Engineer. Paid for as "Exploration Trench Special."

DESIGN STRESSES

FIELD UNITS
 $f'_c = 3,500$ psi
 $f_y = 60,000$ psi (Reinforcement)

PRECAST UNITS

$f'_c = 5,000$ psi
 $f_y = 65,000$ psi (welded wire fabric)

DESIGN SPECIFICATIONS

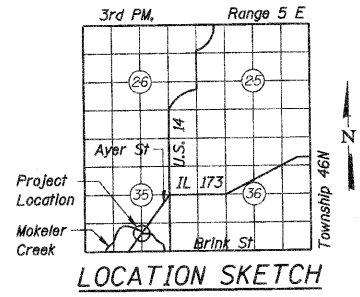
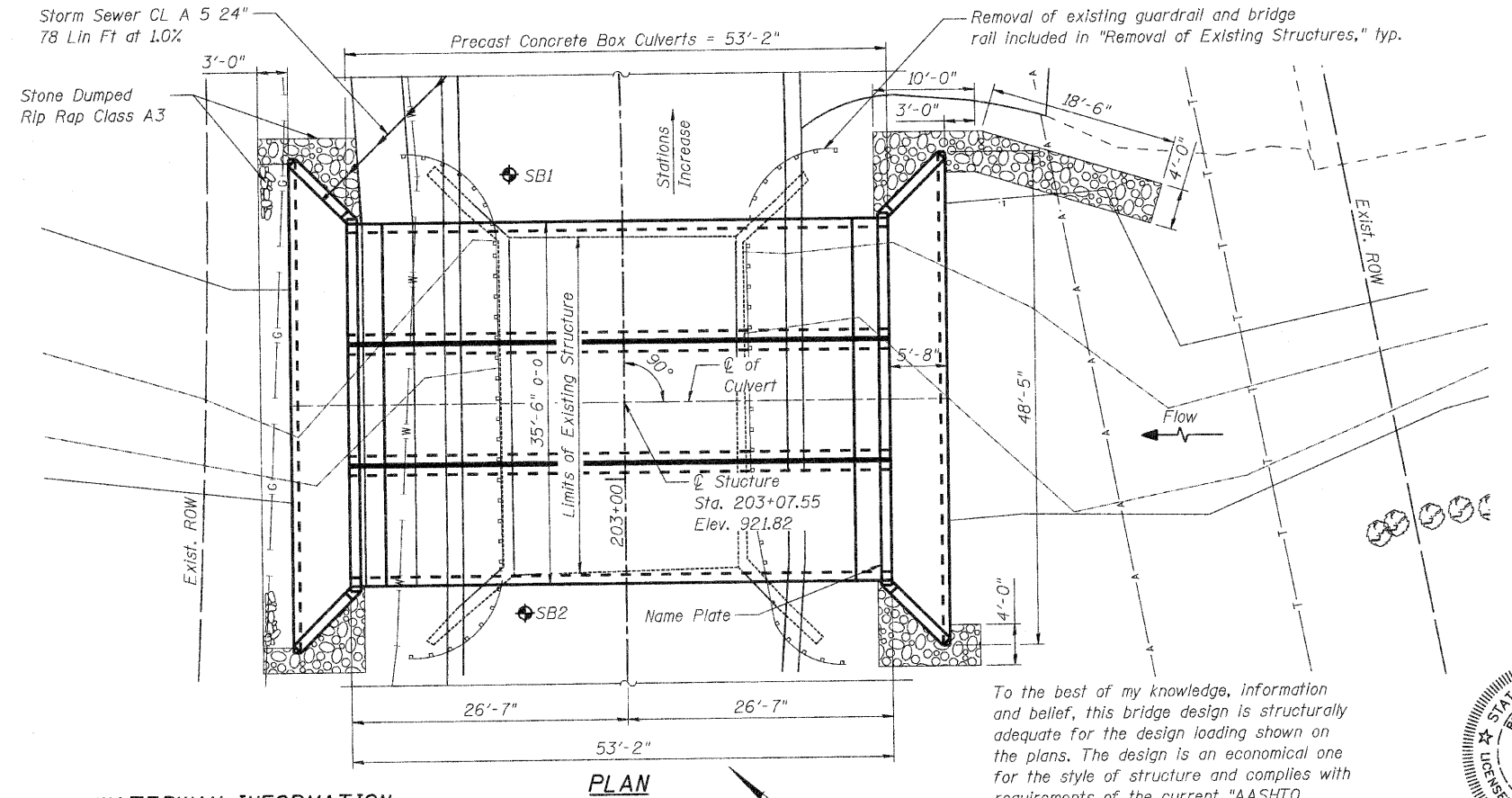
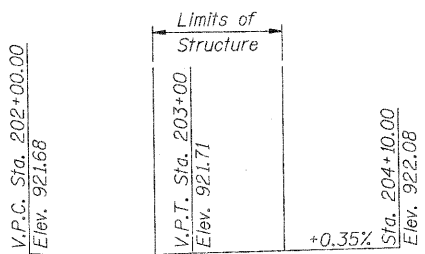
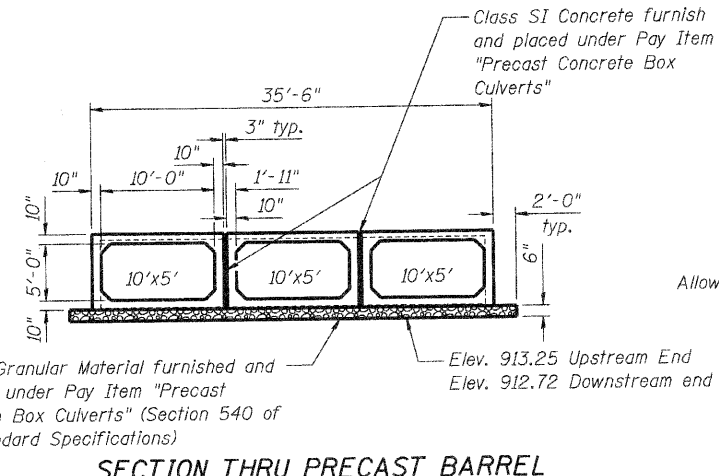
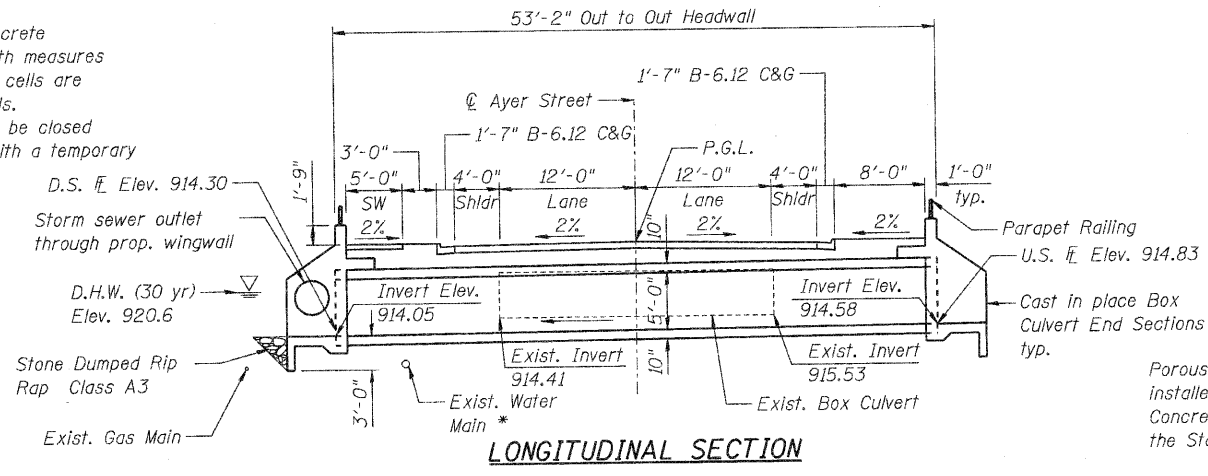
2007 AASHTO LRFD Bridge Design Specifications with 2008 and 2009 Interims

LOADING HS20-44

Allow 50#/sq. ft. for future wearing surface.

DESIGN SCOUR ELEVATION TABLE

Design Scour Elevation (ft.)	D.S. Invert	U.S. Invert
	911.05	911.58



PROFILE GRADE
(along Ayer Street)

NAME PLATE
See Std. 515001

WATERWAY INFORMATION

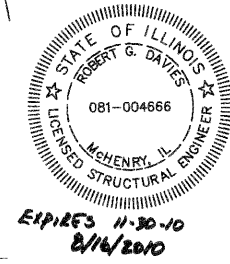
Drainage Area = 4.45 sq. mi. Low Grade Elev. 921.62 @ Sta. 202+50

Flood	Freq. Yr.	Q C.F.S.	Opening Sq. Ft.		Head - Ft.		Headwater El.		
			Exist.	Prop.	H.W.E. Exist.	Prop.	Exist.	Prop.	
Design	10	490	120	150	920.2	0.2	0.1	920.4	920.3
	30	656	120	150	920.6	0.4	0.2	921.0	920.8
	50	740	120	150	920.8	0.6	0.3	921.4	921.1
Base	100	850	120	150	920.9	0.8	0.5	921.7	921.4
Overtopping		825/950*	120	150				921.6	921.6
Max. Calc.	500	1130	120	150	921.2	0.9	0.7	922.1	921.9

* The discharges shown are for the overtopping discharges for the existing and proposed conditions, respectively.

To the best of my knowledge, information and belief, this bridge design is structurally adequate for the design loading shown on the plans. The design is an economical one for the style of structure and complies with requirements of the current "AASHTO Standard Specifications for Highway Bridges".

Robert G. Davies
 Structural Engineer
 SEC Group, Inc.



GENERAL PLAN AND ELEVATION

AYER STREET (FAU ROUTE 0005) OVER MOKELER CREEK
 SECTION NO. 06-00057-00-BR
 McHENRY COUNTY
 STATION 203+07.55
 STRUCTURE NO. 056-6203

DATE: 8/16/10

DESIGNED	MCH/JPG
CHECKED	KMA
DRAWN	WJH
CHECKED	RGD

SHEET NO. S-1	F.A.U. RTE.	SECTION	COUNTY	TOTAL SHEETS	SHEET NO.
	0005	06-00057-00-BR	McHENRY	22	12
S-5 SHEETS	CONTRACT NO. 63508				
FED. ROAD DIST. NO. 1 ILLINOIS FED. AID PROJECT					

SEC GROUP, INC.
 An HR Green Company
 420 N. Front Street, McHenry, IL 60050
 T. 815.385.1778 F. 815.385.1781
 www.secgroupinc.com
 • McHenry, IL • Yorkville, IL • New Lenox, IL • Chicago, IL

FILE NAME: 06057-00057-00-01.dwg 8/16/2010 PLOT DRIVER: pldrvr.plt PEN TABLE: Struct_ZX36.tbl

GENERAL NOTES

- Precast concrete culverts, 10'x5' shall conform to the requirements of Article 540.06 of the Standard Specifications and the applicable requirements of AASHTO M 273.

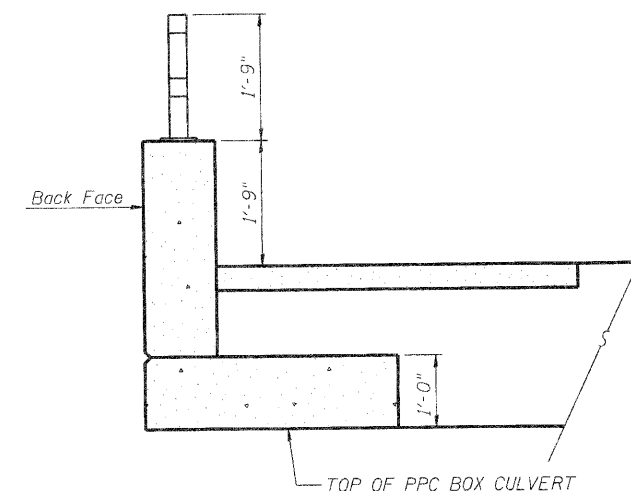
The minimum precast concrete strength shall be 5,000 psi.

Lifting holes shall be filled with concrete plugs and mastic after box sections are in place.

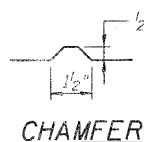
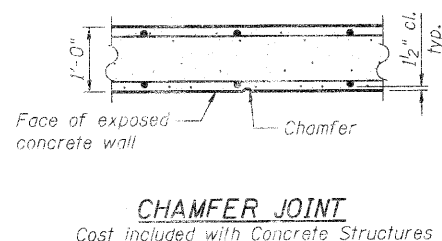
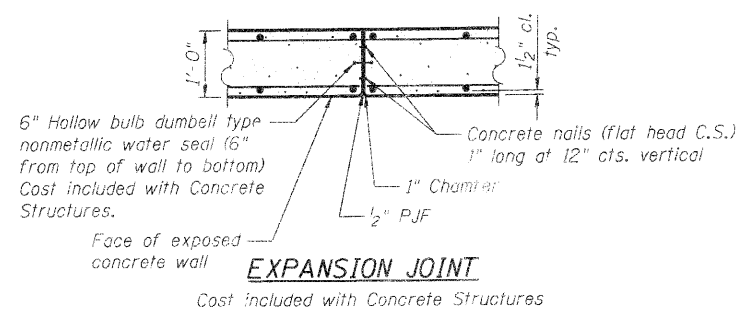
Fill varies 1' to 2'
- BOX CULVERT END SECTIONS shall be paid for as noted in Article 540.08, and The Contract Unit Price for BOX CULVERT END SECTIONS shall include all porous granular bedding material, cast in place wingwalls, headwalls, and aprons, cast in place portions between cells, reinforcement, excavation, backfill, and preformed joint filler.
- Contractor shall maintain streamflow in accordance with the Standard Specifications Article 502.
- Reinforcement bars shall conform to the requirements of ASTM A 760 Gr 60. See Special Provisions.
- Reinforcement bars designated (E) shall be epoxy coated
- Diversion and Construction activities shall not be permitted to cause water levels upstream to rise more than 2'-0" above the normal pool, or above elevations = 916.50.
- "Exploration Trench-Special" is to be used to locate the existing water main and gas line (if not already relocated). See Removal Plan. The location shall be completed prior to full mobilization. Apparent conflicts shall be brought to the Engineer's attention and resolved prior to full mobilization.

TOTAL BILL OF MATERIAL

ITEM	UNIT	TOTAL
Stone Dumped Riprap, Class A3	Ton	45
Removal of Existing Structures	Each	1
Name Plates	Each	1
Parapet Railing	Foot	71
Box Culvert End Sections, Culvert No. 1	Each	2
Precast Concrete Box Culverts, 10'x5' (M273)	Foot	160
Expansion Bolts 3/4 Inch	Each	60



SECTION THRU SIDEWALK



GENERAL NOTES
TOTAL BILL OF MATERIALS
AYER STREET (FAU ROUTE 0005)
OVER MOKELER CREEK
SECTION NO. 06-00057-00-BR
McHENRY COUNTY
STATION 203+07.55
STRUCTURE NO. 056-6203

DATE: 8/16/10

DESIGNED	MGH/JPG
CHECKED	KMA
DRAWN	WJH
CHECKED	RGD



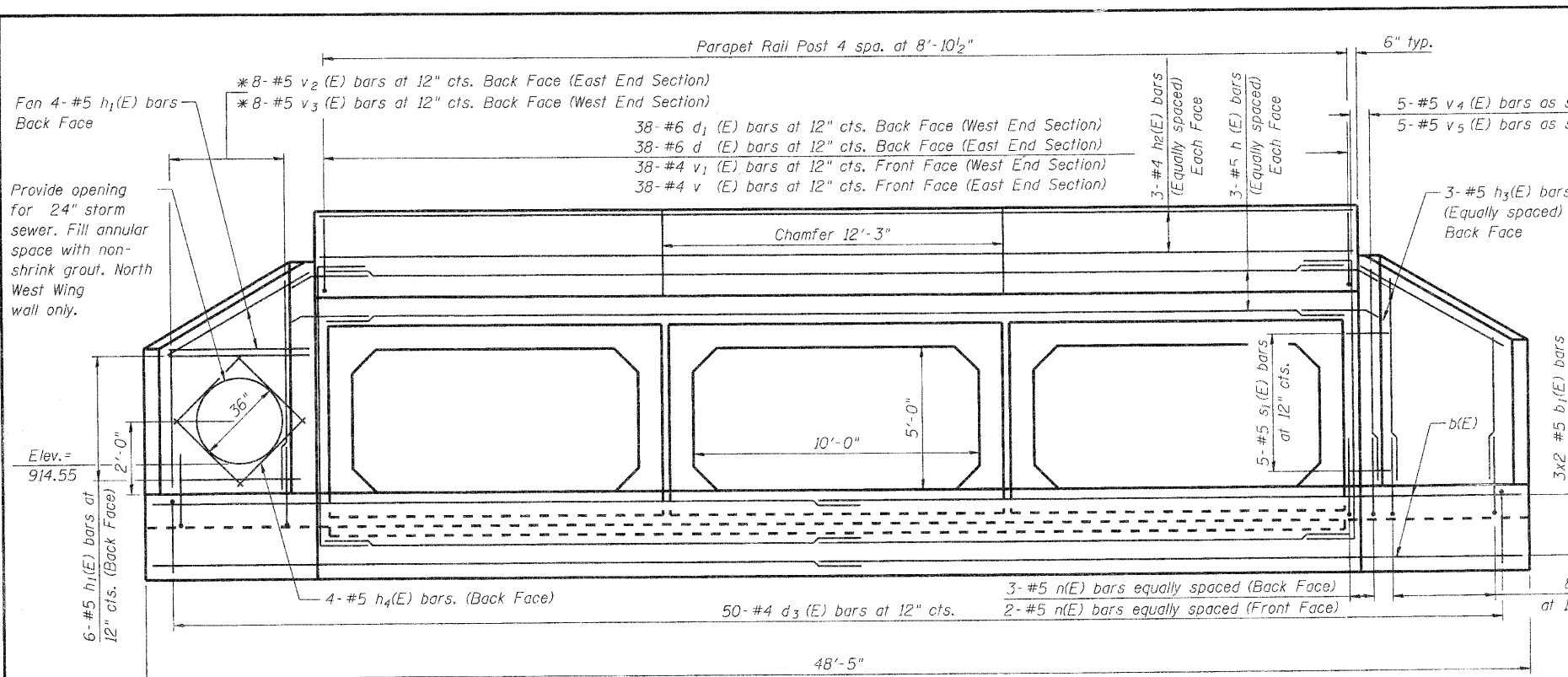
SEC GROUP, INC.
An HR Green Company
420 N. Front Street, McHenry, IL 60050
t. 815.385.1778 f. 815.385.1781
www.secgroupinc.com

Illinois Professional Design Firm # 184-000108

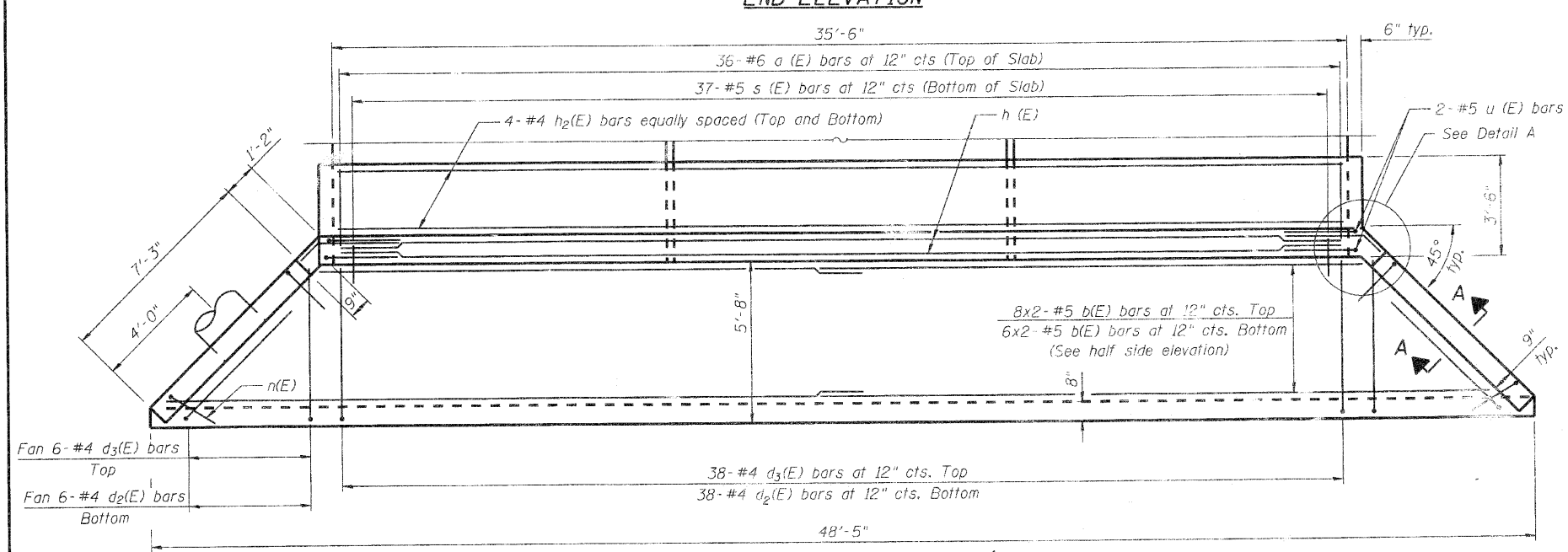
McHenry, IL • Yorkville, IL • New Lenox, IL • Chicago, IL

SHEET NO. S-2	F.A.U. RTE.	SECTION	COUNTY	TOTAL SHEETS	SHEET NO.
	0005	06-00057-00-BR	McHENRY	22	13
S-5 SHEETS	CONTRACT NO. 63508				
FED. ROAD DIST. NO. 1 ILLINOIS FED. AID PROJECT					

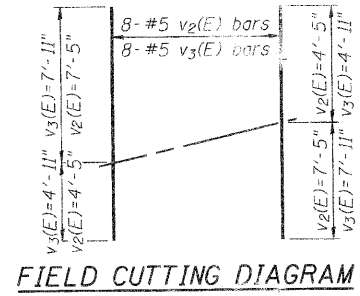
FILE NAME: 060594-con-01 8/16/2010
PLOT DRIVER: pct/cpt
PEN TABLE: Struct 22x34.tbl



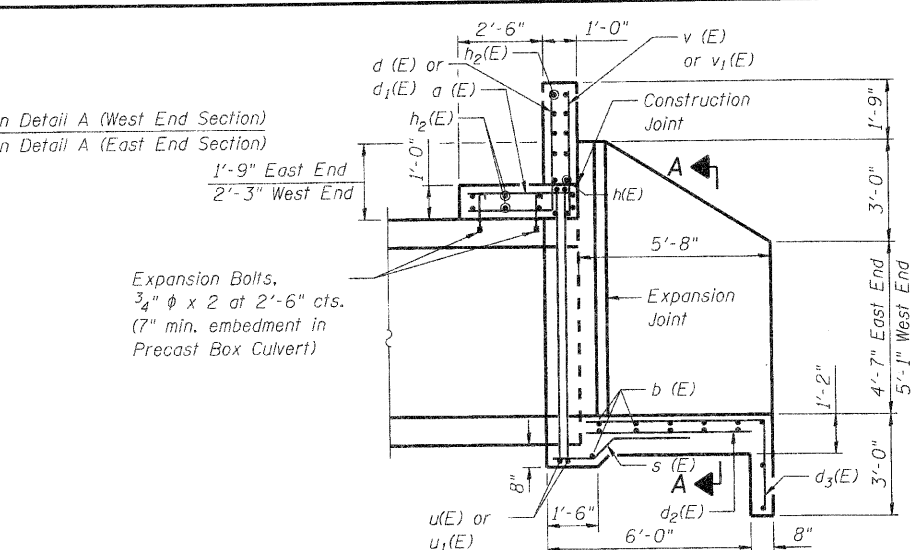
END ELEVATION



PLAN



BARS d₁(E) and d₂(E) BAR h₃(E) BAR d₃(E)

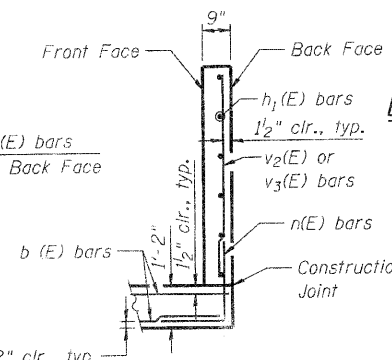


HALF SIDE ELEVATION

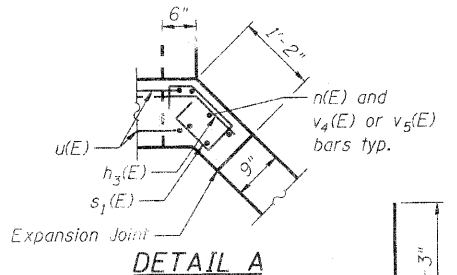
BILL OF MATERIAL FOR TWO END SECTIONS

Bar	No.	Size	Length	Shape
a(E)	72	#6	3'-2"	—
b(E)	56	#5	25'-8"	—
d(E)	38	#6	5'-9"	┌
d ₁ (E)	38	#6	6'-1"	┌
d ₂ (E)	100	#4	5'-4"	—
d ₃ (E)	100	#4	7'-9"	┌
h(E)	12	#5	36'-0"	—
h ₁ (E)	40	#5	8'-0"	—
h ₂ (E)	12	#4	36'-4"	—
h ₃ (E)	12	#5	4'-3"	┌
h ₄ (E)	4	#5	3'-4"	—
n(E)	52	#5	7'-3"	┌
s(E)	74	#5	4'-11"	┌
s ₁ (E)	20	#5	3'-0"	┌
u(E)	8	#5	13'-10"	┌
v(E)	38	#4	3'-5"	—
v ₁ (E)	38	#4	3'-9"	—
v ₂ (E)	8	#5	11'-10"	—
v ₃ (E)	8	#5	12'-10"	—
v ₄ (E)	5	#5	7'-11"	—
v ₅ (E)	5	#5	7'-5"	—
Box Culvert End Section, Culvert No. 1			Each	2
** Reinforcement Bars Epoxy Coated			Pound	5,610

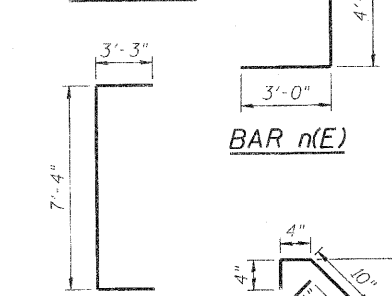
** Included with the cost of Box Culvert End Section, Culvert No. 1



SECTION A-A



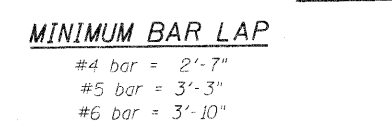
DETAIL A



BAR n(E)



BARS u(E)



BAR s₁(E)

MINIMUM BAR LAP

#4 bar = 2'-7"

#5 bar = 3'-3"

#6 bar = 3'-10"

END SECTION DETAILS

AYER STREET (FAU ROUTE 0005)
OVER MOKELER CREEK
SECTION NO. 06-00057-00-BR
McHENRY COUNTY
STATION 203+07.55
STRUCTURE NO. 056-6203

DATE: 8/16/10

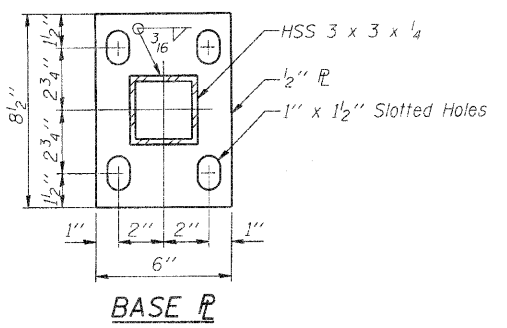
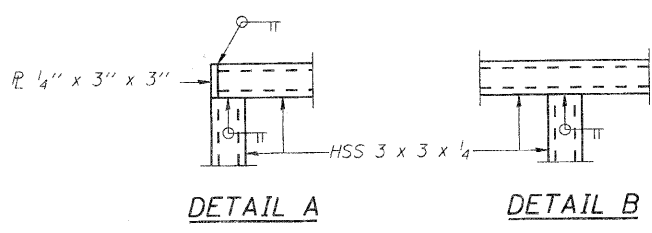
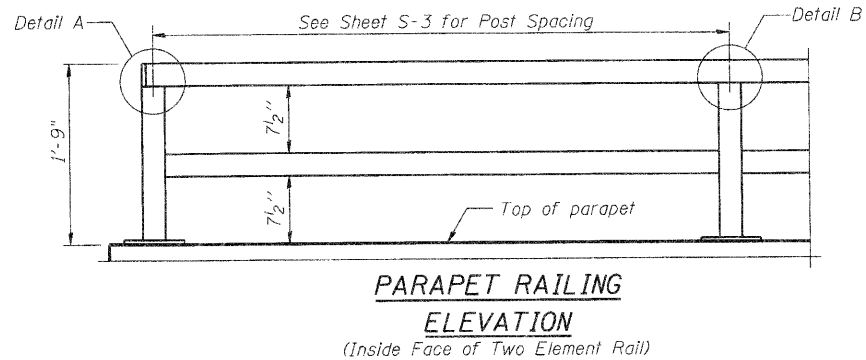
DESIGNED	MGH/JPG
CHECKED	KMA
DRAWN	WJH
CHECKED	RGD

FILE NAME: 060594-End.dgn 8/16/2010
PLOT DRIVER: pctplot 8/24/10
PLOT VALUE: 200
FOR VALUE: 200

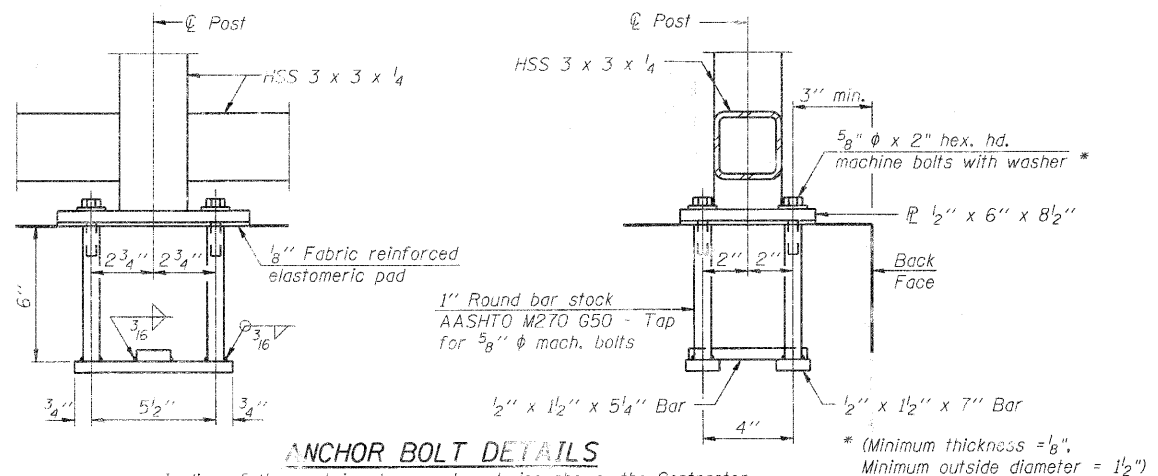
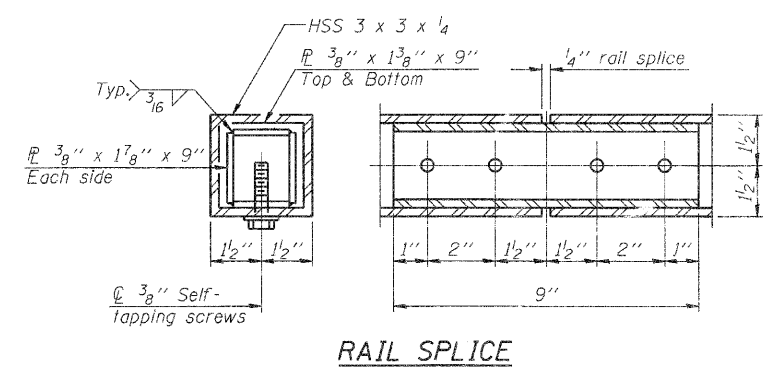
Illinois Professional Design Firm # 184-000108

SEC GROUP, INC.
An HR Green Company
420 N. Front Street, McHenry, IL 60050
L 815.385.1778 F 815.385.1781
www.secgroupinc.com
Chicago, IL • Yorkville, IL • New Lenox, IL • Chicago, IL

SHEET NO. S-3	F.A.U R.T.E.	SECTION	COUNTY	TOTAL SHEETS	SHEET NO.
	0005	06-00057-00-BR	McHENRY	22	14
S-5 SHEETS	CONTRACT NO. 63508				
FED. ROAD DIST. NO. 1 ILLINOIS FED. AID PROJECT					



Note:
All steel rail elements shall be galvanized according to Article 509.05 of the Standard Specifications.



In lieu of the cast-in-place anchor device shown, the Contractor has the option of drilling and setting 5/8" ϕ anchor rods according to Article 509.06 of the Standard Specifications. Embedment shall be according to the manufacturer's specifications.

BILL OF MATERIAL

Item	Unit	Quantity
Parapet Railing	Foot	71

PARAPET RAILING
 AYER STREET (FAU ROUTE 0005)
 OVER MOKELER CREEK
 SECTION NO. 06-00057-00-BR
 McHENRY COUNTY
 STATION 203+07.55
 STRUCTURE NO. 056-6203

DATE: 8/16/10

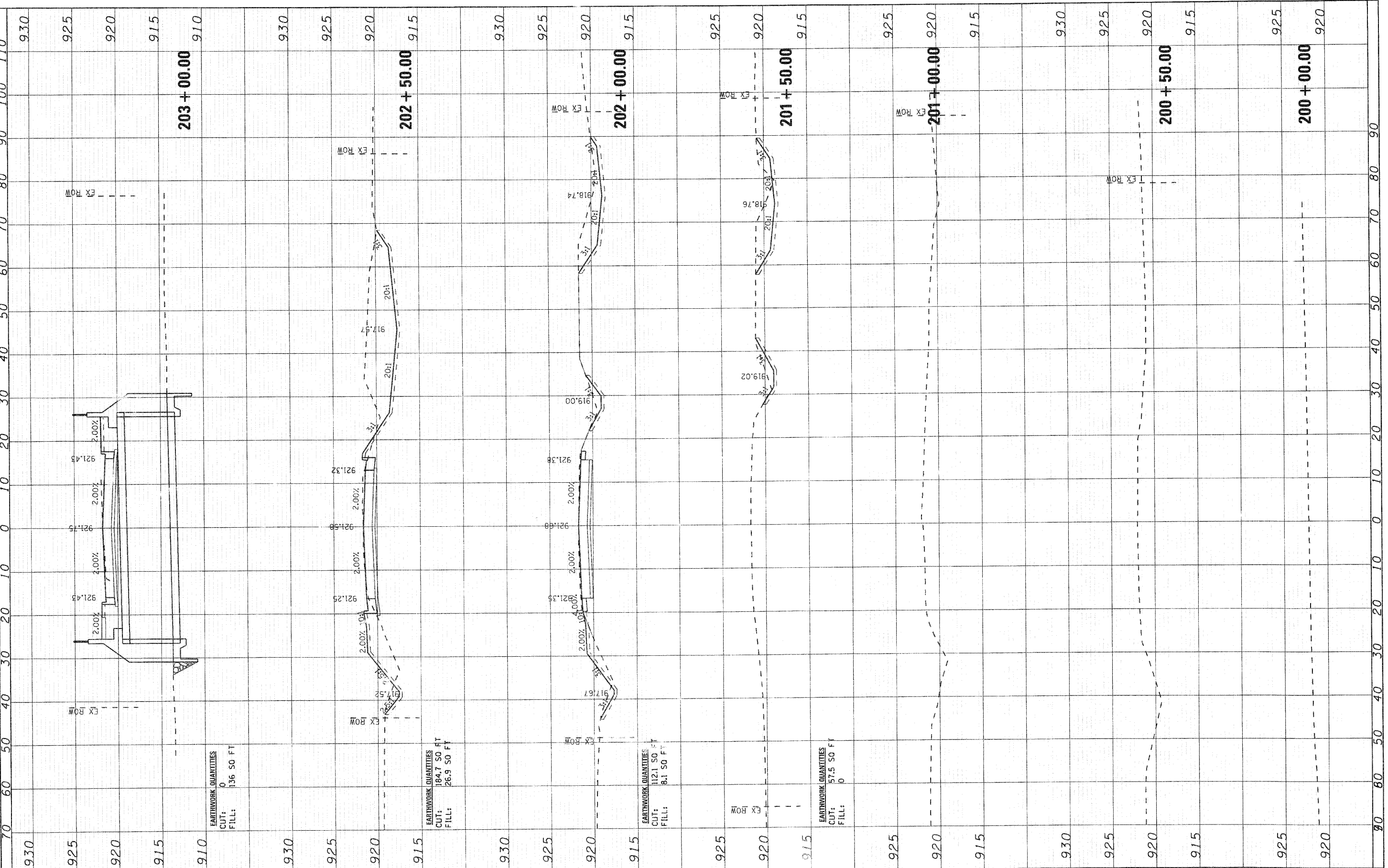
DESIGNED	MGH/JPG
CHECKED	KMA
DRAWN	WJH
CHECKED	RGD

SEC GROUP, INC.
 An HR Green Company
 420 N. Front Street, McHenry, IL 60050
 T. 815.385.1778 F. 815.385.1781
 www.secgroupinc.com
 • McHenry, IL • Yorkville, IL • New Lenox, IL • Chicago, IL

SHEET NO. S-4	F.A.U. RTE.	SECTION	COUNTY	TOTAL SHEETS	SHEET NO.
	0005	06-00057-00-BR	McHENRY	22	15
S-5 SHEETS		CONTRACT NO. 63508			
FED. ROAD DIST. NO. 1 ILLINOIS FED. AID PROJECT					

FILE NAME: 060594-Rev.dwg 8/16/2010
 PLOT DRIVER: dxfplot
 PEN TABLE: Struct_22x34.tbl

COMPANY NAME: SEC GROUP, INC.
 PROJECT CONTACT: Robert C. Davies
 CLIENT: City of Harvard
 DATE PLOTTED: 8/16/2010 8:35:17 AM
 FILE NAME: 080594_xs.dgn
 PLOT DRIVER: pdfplot
 PLOT TABLE: Street 20x34.tbl



SEC Group, Inc.
 16119 Green Company
 400 N. Paul Street
 Moline, IL 61201-2139
 P: 815.305.1778 F: 815.363.1701
 www.secgroup.com
 ©Henry J. Phipps & Associates, Chicago, IL

USER NAME = whood	DESIGNED - JPC	REVISED -
FILE NAME = 080594_xs.dgn	DRAWN - WJH	REVISED -
PLOT SCALE =	CHECKED - RGD	REVISED -
PLOT DATE = 8/16/2010	DATE - 8/16/10	REVISED -

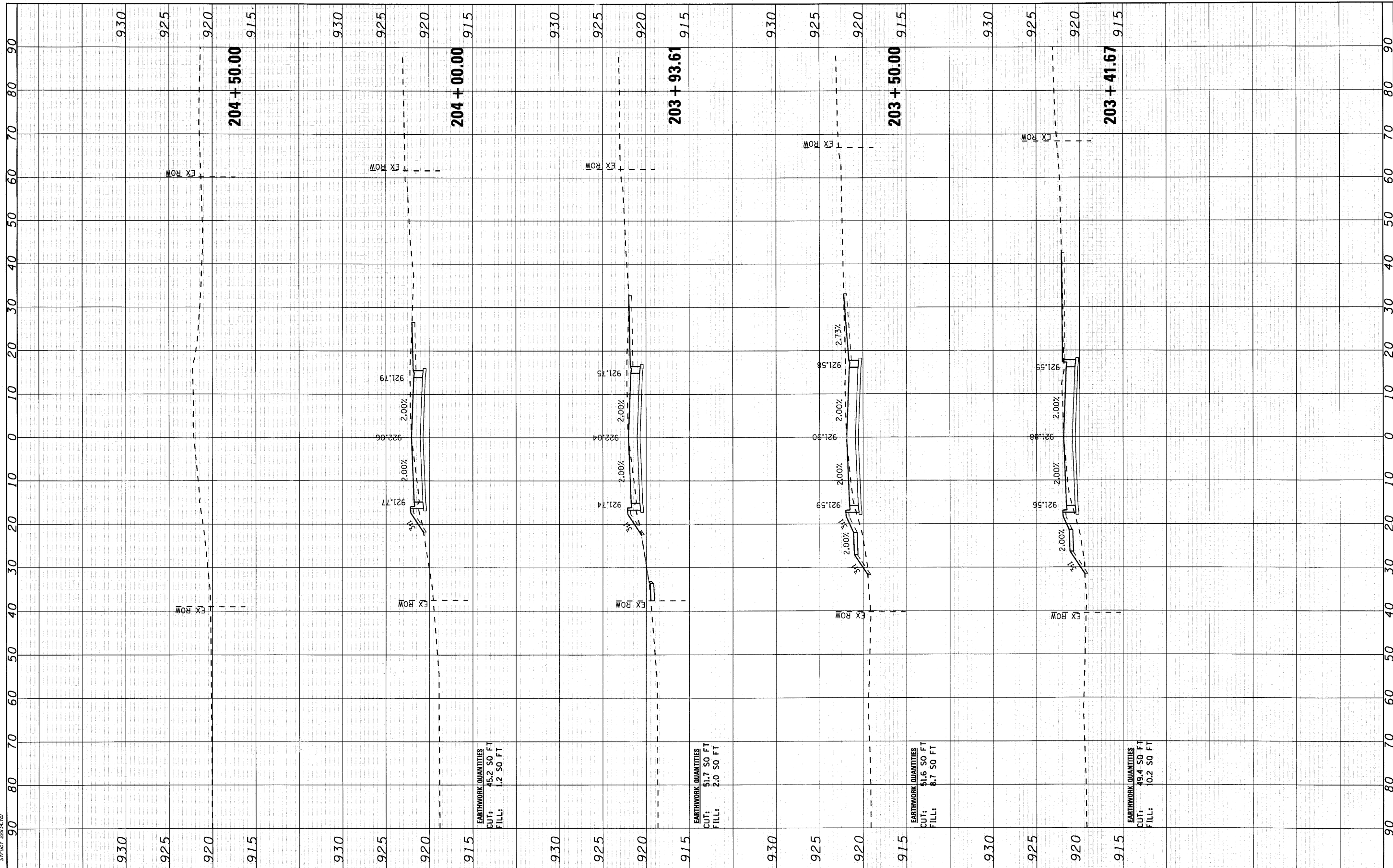
STATE OF ILLINOIS
DEPARTMENT OF TRANSPORTATION

AYER STREET OVER MOKELER CREEK
CROSS SECTIONS

SCALE: 10H:5V SHEET NO. 1 OF 2 SHEETS STA. 200+00.00 TO STA. 203+00.00

F.A.U. RTE. 0005	SECTION 06-00057-00-BR	COUNTY McHENRY	TOTAL SHEETS 22	SHEET NO. 17
CONTRACT NO. 63508				
FED. ROAD DIST. NO. 1 ILLINOIS FED. AID PROJECT				

COMPANY NAME: SEC GROUP, INC.
 PROJECT CONTACT: Robert C. Davies
 CLIENT: City of Harvard
 DATE PLOTTED: 8/16/2010 8:35:19 AM
 FILE NAME: 080594_xs.dgn
 PLOT DATE: 8/16/2010
 PLOT SCALE: 10:1
 PLOT TABLE: 22x34.tbl



EARTHWORK QUANTITIES
 CUT: 45.2 SO FT
 FILL: 1.2 SO FT

EARTHWORK QUANTITIES
 CUT: 51.7 SO FT
 FILL: 2.0 SO FT

EARTHWORK QUANTITIES
 CUT: 51.6 SO FT
 FILL: 8.7 SO FT

EARTHWORK QUANTITIES
 CUT: 49.4 SO FT
 FILL: 10.2 SO FT



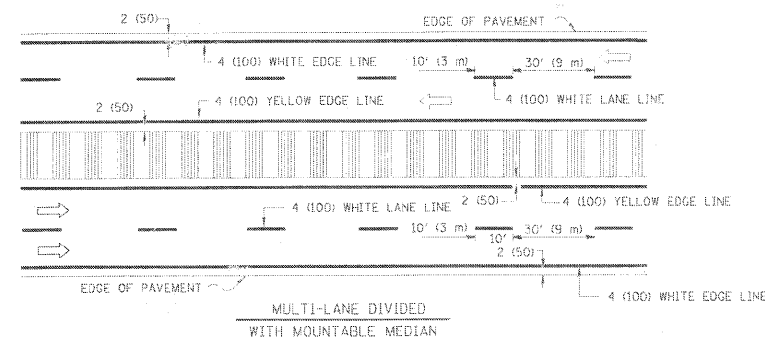
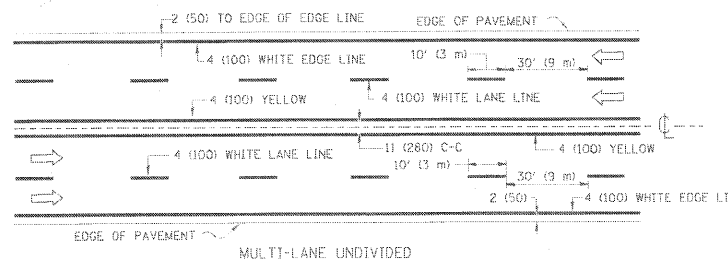
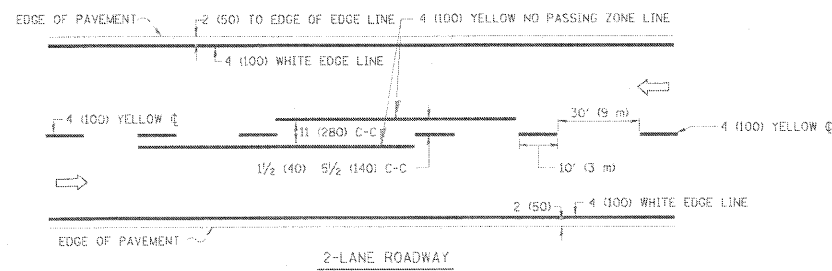
USER NAME = whood	DESIGNED - JPG	REVISED -
FILE NAME = 080594_xs.dgn	DRAWN - WJH	REVISED -
PLOT SCALE =	CHECKED - RGD	REVISED -
PLOT DATE = 8/16/2010	DATE - 8/16/10	REVISED -

STATE OF ILLINOIS
 DEPARTMENT OF TRANSPORTATION

AYER STREET OVER MOKELER CREEK
 CROSS SECTIONS

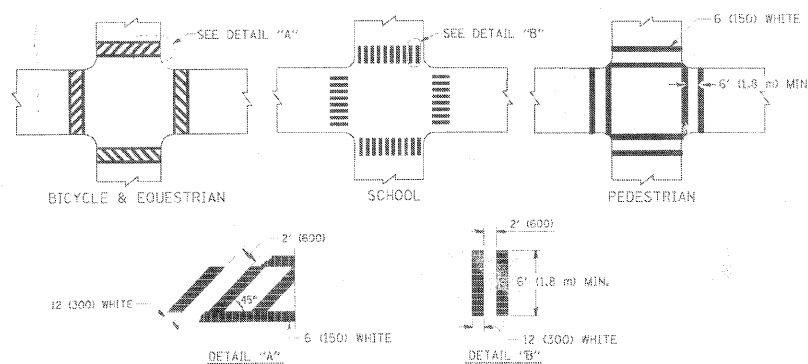
SCALE: 10H:5V SHEET NO. 2 OF 2 SHEETS STA. 203+41.67 TO STA. 204+50.00

F.A.U. RTE.	SECTION	COUNTY	TOTAL SHEETS	SHEET NO.
0005	06-00057-00-BR	McHENRY	22	18
FED. ROAD DIST. NO. 1 ILLINOIS FED. AID PROJECT			CONTRACT NO. 63508	

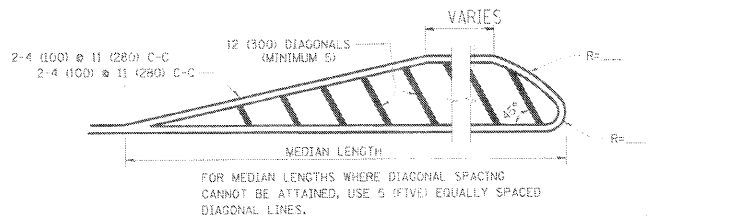
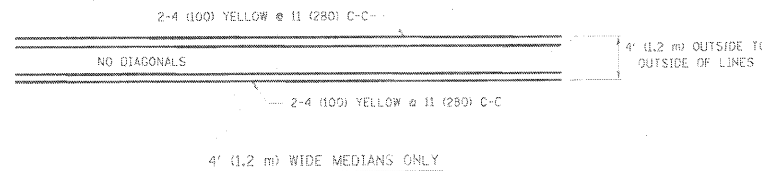


NOTE: MEDIANS WITH BARRIER CURB DO NOT REQUIRE AN EDGE LINE

TYPICAL LANE AND EDGE LINE MARKING

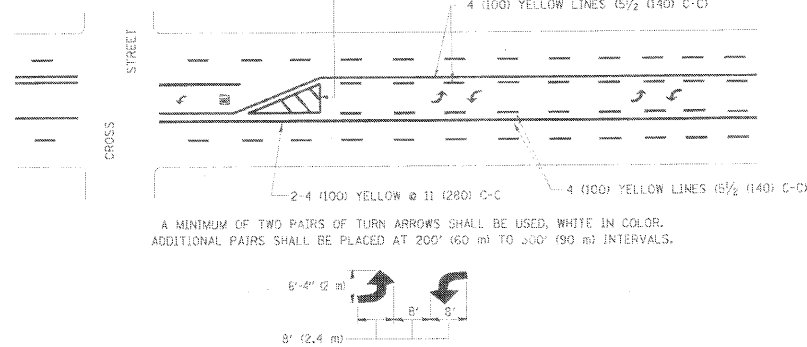


TYPICAL CROSSWALK MARKING

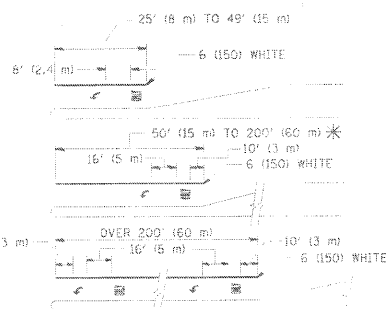


DIAGONAL LINE SPACING: 50' (15 m) C-C (LESS THAN 30MPH (50 km/h))
75' (25 m) C-C (30MPH (50 km/h) TO 45MPH (70 km/h))
150' (45 m) C-C (MORE THAN 45MPH (70 km/h))

MEDIANS OVER 4' (1.2 m) WIDE

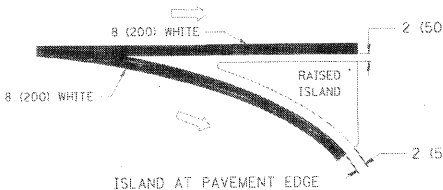
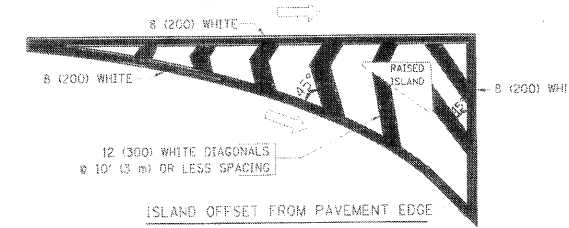


TYPICAL PAINTED MEDIAN MARKING



FULL SIZE LETTERS 8" (2.1 m) AND ARROWS SHALL BE USED.
* TURN LANES IN EXCESS OF 400' (120 m) IN LENGTH MAY HAVE AN ADDITIONAL SET OF ARROW - "ONLY" INSTALLED MIDWAY BETWEEN THE OTHER TWO SETS OF ARROW - "ONLY".

TYPICAL TURN LANE MARKING



TYPICAL ISLAND MARKING

TYPE OF MARKING	WIDTH OF LINE	PATTERN	COLOR	SPACING / REMARKS
CENTERLINE ON 2 LANE PAVEMENT	4 (100)	SKIP-DASH	YELLOW	10' (3 m) LINE WITH 30' (9 m) SPACE
CENTERLINE ON MULTI-LANE UNDIVIDED PAVEMENT	2 @ 4 (100)	SOLID	YELLOW	11 (280) C-C
NO PASSING ZONE LINES: FOR ONE DIRECTION FOR BOTH DIRECTIONS	4 (100) 2 @ 4 (100)	SOLID SOLID	YELLOW YELLOW	5/2 (140) C-C FROM SKIP-DASH CENTERLINE 11 (280) C-C OMIT SKIP-DASH CENTERLINE BETWEEN
LANE LINES	4 (100) 5 (125) ON FREEWAYS	SKIP-DASH SKIP-DASH	WHITE WHITE	10' (3 m) LINE WITH 30' (9 m) SPACE
DOTTED LINES (EXTENSIONS OF CENTER, LANE OR TURN LANE MARKINGS)	SAME AS LINE BEING EXTENDED	SKIP-DASH	SAME AS LINE BEING EXTENDED	2' (600) LINE WITH 6' (1.8 m) SPACE
EDGE LINES	4 (100)	SOLID	YELLOW-LEFT WHITE-RIGHT	OUTLINE MOUNTABLE MEDIANS IN YELLOW; EDGE LINES ARE NOT USED NEXT TO BARRIER CURB
TURN LANE MARKINGS	6 (150) LINE; FULL SIZE LETTERS & SYMBOLS (8" (2.1m))	SOLID	WHITE	SEE TYPICAL TURN LANE MARKING DETAIL
TWO WAY LEFT TURN MARKING	2 @ 4 (100) EACH DIRECTION 8' (2.4m) LEFT ARROW	SKIP-DASH AND SOLID IN PAIRS	YELLOW WHITE	10' (3 m) LINE WITH 30' (9 m) SPACE FOR SKIP-DASH; 5/2 (140) C-C BETWEEN SOLID LINE AND SKIP-DASH LINE SEE TYPICAL TWO-WAY LEFT TURN MARKING DETAIL
CROSSWALK LINES (PEDESTRIAN) A. DIAGONALS (BIKE & EQUESTRIAN) B. LONGITUDINAL BARS (SCHOOL)	2 @ 6 (150) 12 (300) @ 45° 12 (300) @ 90°	SOLID SOLID SOLID	WHITE WHITE WHITE	NOT LESS THAN 6' (1.8 m) APART 2' (600) APART 2' (600) APART SEE TYPICAL CROSSWALK MARKING DETAILS.
STOP LINES	24 (600)	SOLID	WHITE	PLACE 4' (1.2 m) IN ADVANCE OF AND PARALLEL TO CROSSWALK, IF PRESENT. OTHERWISE, PLACE AT DESIRED STOPPING POINT, PARALLEL TO CROSSROAD CENTERLINE, WHERE POSSIBLE
PAINTED MEDIANS	2 @ 4 (100) WITH 12 (300) DIAGONALS @ 45° NO DIAGONALS USED FOR 4' (1.2 m) WIDE MEDIANS	SOLID	YELLOW: TWO WAY TRAFFIC WHITE: ONE WAY TRAFFIC	11 (280) C-C FOR THE DOUBLE LINE SEE TYPICAL PAINTED MEDIAN MARKING.
GOPE MARKING AND CHANNELIZING LINES	8 (200) WITH 12 (300) DIAGONALS @ 45°	SOLID	WHITE	DIAGONALS: 15' (4.5 m) C-C (LESS THAN 30MPH (50 km/h)) 20' (6 m) C-C (30MPH (50 km/h) TO 45MPH (70 km/h)) 30' (9 m) C-C (OVER 45MPH (70 km/h))
RAILROAD CROSSING	24 (600) TRANSVERSE LINES; "RR" IS 6" (1.8 m) LETTERS; 16 (400) LINE FOR "X"	SOLID	WHITE	SEE STATE STANDARD 780001 AREA OF: "R"=2.6 SQ. FT. (0.33 m²) EACH "X"=54.0 SQ. FT. (5.0 m²)
SHOULDER DIAGONALS	12 (300) @ 45°	SOLID	WHITE - RIGHT YELLOW - LEFT	50' (15 m) C-C (LESS THAN 30MPH (50 km/h)) 75' (25 m) C-C (30 MPH (50 km/h) TO 45MPH (70 km/h)) 150' (45 m) C-C (OVER 45MPH (70 km/h))

FOR FURTHER DETAILS ON PAVEMENT MARKING REFER TO STANDARD SPECIFICATIONS FOR ROAD AND BRIDGE CONSTRUCTION AND STATE STANDARD 780001.

All dimensions are in inches (millimeters) unless otherwise shown.

COMPANY NAME: SEC GROUP, INC.
PROJECT CONTACT: Robert G. Davies
CLIENT: City of Harvard
DATE PLOTTED: 8/16/2010 8:56:25 AM
PLOT DRIVER: secplot
PEN TABLE: Struct 22x34.tbl

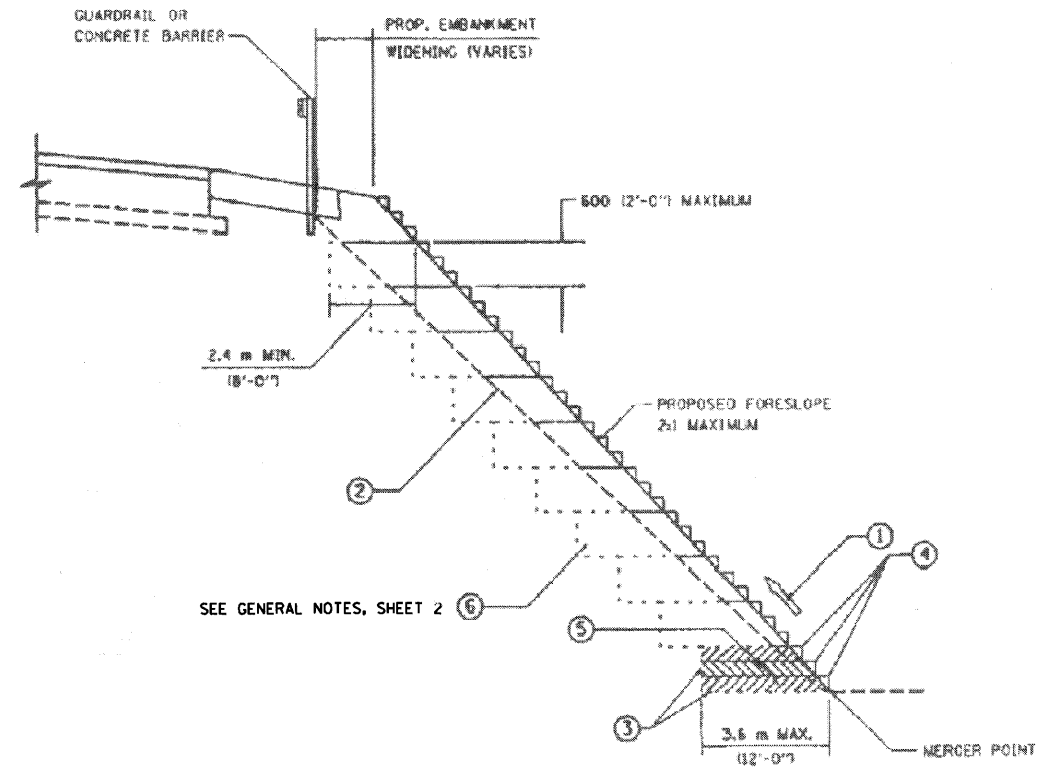
SEC Group, Inc.
An IIR Group Company
420 N. Dear Street
Mesa, AZ 85203-1398
1-800-881-1779 • 480-288-1181
www.secgroupinc.com
McHenry, IL • 9000 N. • New Lenox, IL • Chicago, IL

USER NAME = whood	DESIGNED - EVERS	REVISED - T. RAMMACHER 10-27-94
FILE NAME = 080594-De01.dgn	DRAWN -	REVISED - C. JUCIUS 09-09-09
PLOT SCALE =	CHECKED -	REVISED -
PLOT DATE = 8/16/2010	DATE = 03-19-90	REVISED -

STATE OF ILLINOIS
DEPARTMENT OF TRANSPORTATION

DISTRICT ONE				
TYPICAL PAVEMENT MARKINGS				
SCALE:	SHEET NO.	OF SHEETS	STA.	TO STA.

F.A.U. RTE.	SECTION	COUNTY	TOTAL SHEETS	SHEET NO.
0005	06-00057-00-BR	McHENRY	22	19
TC-13		CONTRACT NO. 63508		
FED. ROAD DIST. NO. 1 ILLINOIS FED. AID PROJECT				



**TYPICAL BENCHING DETAIL
FOR EMBANKMENT**

NOTES:

- ① CONSTRUCT SUCCEEDING BENCH CUTS AND EMBANKMENT PLACEMENT AND COMPACTION FROM BOTTOM TO TOP IN STAIRSTEP FASHION.
- ② EXISTING FORESLOPE PREPARED IN ACCORDANCE WITH ARTICLE 205.03 OF THE STANDARD SPECIFICATIONS.
- ③ BENCH CUT EXISTING SLOPE TYPICAL FOR EACH STEP.
- ④ TRIM TO FINAL SLOPE.
- ⑤ EQUAL 200 (8-INCH) LIFTS OF EMBANKMENT COMPACTED IN ACCORDANCE WITH ARTICLE 205.05 OF THE STANDARD SPECIFICATIONS.
- ⑥ EXCAVATION OF BENCH CUTS WITHIN EXISTING EMBANKMENT WILL BE INCLUDED IN THE COST FOR "REMOVAL AND DISPOSAL OF UNSUITABLE MATERIAL".
- ⑦ SLOPE SHALL BE BENCHED ACCORDING TO THIS DETAIL WHEN THE SLOPE IS STEEPER THAN 4:1 AND THE HEIGHT IS GREATER THAN 5'.

COMPANY NAME: SEC GROUP, INC.
 PROJECT CONTACT: Robert G. Davies
 CLIENT: City of Harvard
 DATE PLOTTED: 8/16/2010 8:52:28 AM
 PLOT DRIVER: c:\p1\bin\plot12.dgn
 PEN TABLE: S:\p1\tbl\22x34.tbl

SEC Group, Inc.
 An HR Group Company
 420 N. First Street
 Moline, IL 61902-3138
 1-815-365-1775 • FAX 815-365-1781
 www.secgroupinc.com
 Moline, IL • Rockford, IL • New Lenox, IL • Chicago, IL

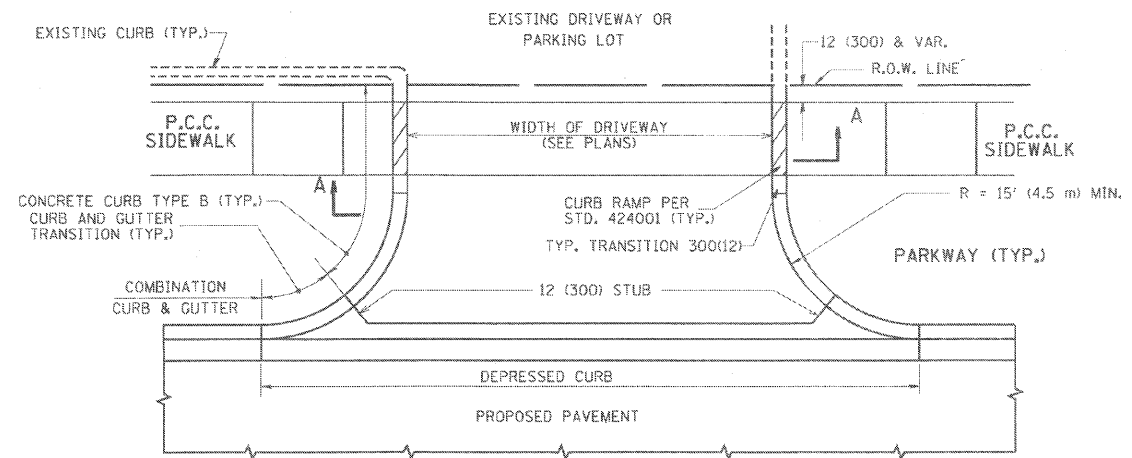
USER NAME = rhood	DESIGNED - JPG	REVISED -
FILE NAME = 889594-de v82.dgn	DRAWN - WJH	REVISED -
PLOT SCALE =	CHECKED - RGD	REVISED -
PLOT DATE = 8/16/2010	DATE -	REVISED -

**STATE OF ILLINOIS
DEPARTMENT OF TRANSPORTATION**

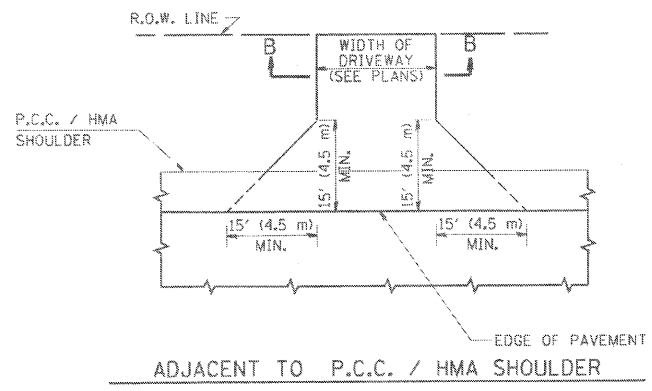
**AYER STREET OVER MOKELER CREEK
BENCHING DETAIL**

F.A.U. RTE.	SECTION	COUNTY	TOTAL SHEETS	SHEET NO.
0005	06-00057-00-BR	McHENRY	22	20
CONTRACT NO.			63508	
FED. ROAD DIST. NO. 1 ILLINOIS FED. AID PROJECT				

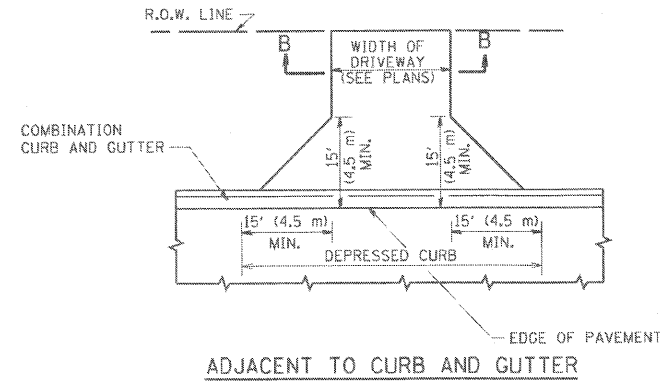
SCALE:	SHEET NO.	OF	SHEETS	STA.	TO STA.
--------	-----------	----	--------	------	---------



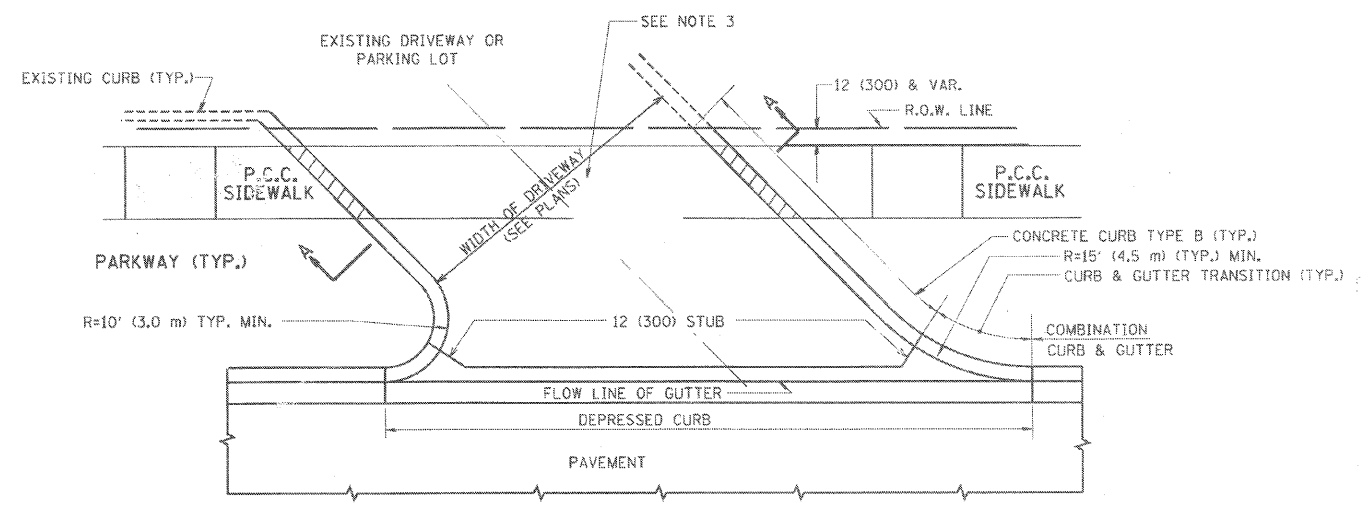
WITH CONCRETE CURB, TYPE B



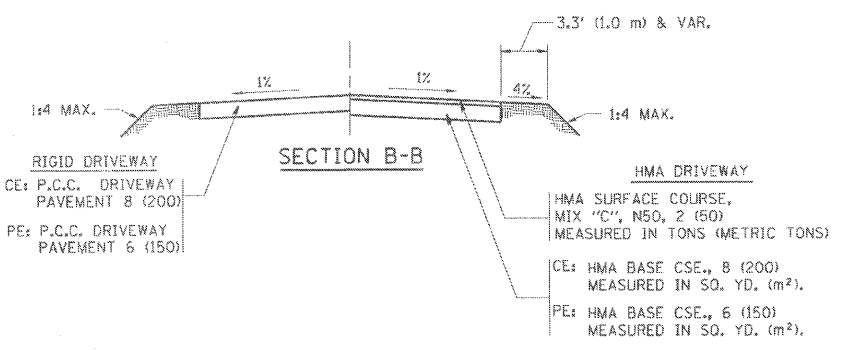
ADJACENT TO P.C.C. / HMA SHOULDER



ADJACENT TO CURB AND GUTTER



WITH CONCRETE CURB, TYPE B



SECTION B-B

GENERAL NOTES:

DRIVEWAY SLOPES, LOCATIONS, & GEOMETRIC LAYOUT SHALL BE IN ACCORDANCE WITH THE LATEST EDITION OF THE "HANDBOOK FOR POLICY ON PERMITS FOR ACCESS DRIVEWAYS TO STATE HIGHWAYS". FOR FURTHER LAYOUT REQUIREMENTS, REFER TO ILLUSTRATIONS IN THE PERMIT HANDBOOK. DRIVEWAYS SHALL BE REPLACED IN KIND, UNLESS OTHERWISE NOTED ON THE PLANS.

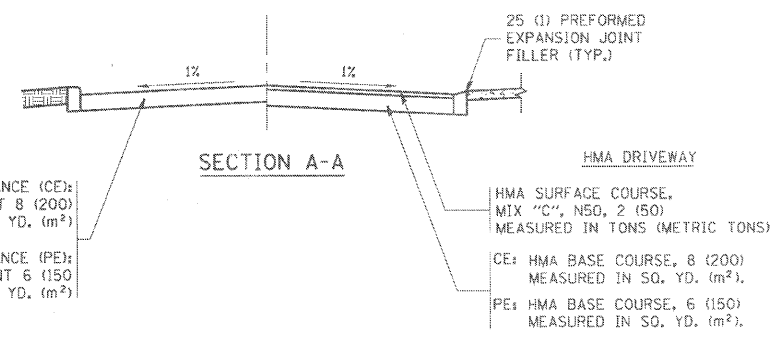
COMMERCIAL DRIVEWAYS SHALL BE CONSTRUCTED WITH CONCRETE CURB, TYPE B RETURNS EXCEPT WHEN THE SIDEWALK EDGE IS 4 FEET (1.2 METERS) OR LESS FROM THE BACK OF CURB, CONSTRUCT A FLARE DRIVEWAY WITHOUT CURB.

THE RESIDENT ENGINEER SHALL CONTACT THE TRAFFIC PERMIT OFFICE AT 847/ 705-4131 FOR ANY QUESTIONS ON DRIVEWAYS SHOWN IN THE PLANS; SPECIFICALLY IN REFERENCE TO ADDITIONAL AND/OR RELOCATION/REMOVAL OF A DRIVEWAY.

COMBINATION CONCRETE CURB & GUTTER SHALL BE MEASURED STRAIGHT ACROSS THE DRIVEWAY. NO ADDITIONAL COMPENSATION WILL BE ALLOWED FOR THE CURB & GUTTER TRANSITION.

1 (25) PREFORMED EXPANSION JOINT FILLER WILL NOT BE PAID SEPARATELY, BUT SHALL BE CONSIDERED INCLUDED IN THE COST OF THE P.C.C. DRIVEWAY PAVEMENT OR P.C.C. SIDEWALK.

WHEN THE P.C.C. SIDEWALK EXTENDS THROUGH THE DRIVEWAY, THE THICKNESS OF THE SIDEWALK IN THE DRIVEWAY AREA SHALL BE THE SAME AS THE DRIVEWAY THICKNESS. SIDEWALK WILL BE PAID FOR AS P.C.C. SIDEWALK OF THE THICKNESS SPECIFIED. SIDEWALK CROSS SLOPE THRU DRIVEWAY AREA TO BE A MAXIMUM OF 1:50.



SECTION A-A

SEC GROUP, INC.
 PROJECT CONTACT:
 Robert L. Davies
 City of Harvard
 1000 8:35:33 AM
 DATE PLOTTED:
 08/16/2010 8:35:33 AM
 PLOT DRIVER:
 gprdg
 PLOT TABLE:
 Struct 22x34.tbl

SEC Group, Inc.
 An IRI Group Company
 420 N. First Street
 Moline, IL 61201-1000
 1-815-396-1779 (1-815-365-1781)
 www.secgroupinc.com
 McGraw-Hill Construction Information Group

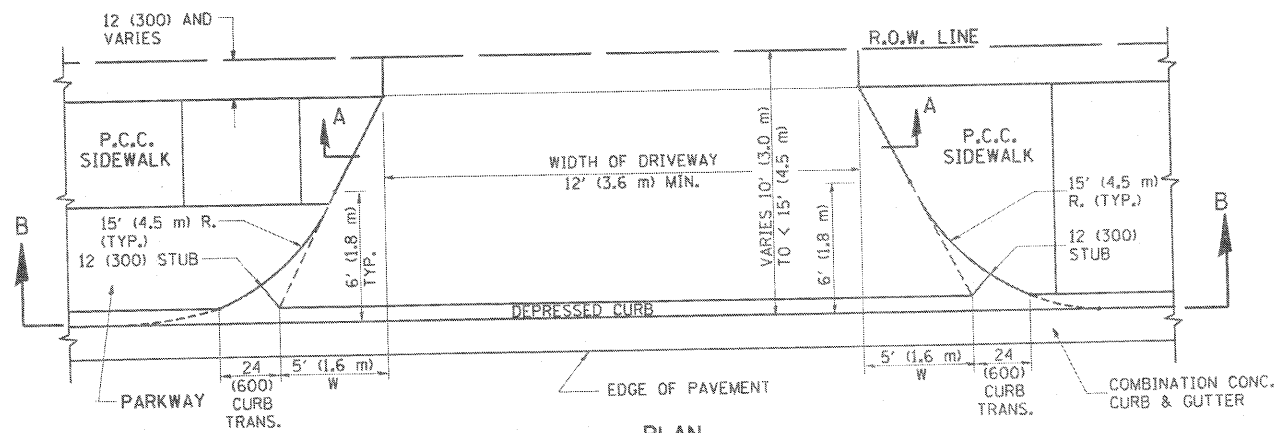
USER NAME = whood	DESIGNED - R. SHAH	REVISED - M. GOMEZ 04-06-01
FILE NAME = 060594-det03.dgn	DRAWN -	REVISED - P. LOFLUER 04-15-03
PLOT SCALE =	CHECKED -	REVISED - R. BORO 01-01-07
PLOT DATE = 8/16/2010	DATE - 11-04-95	REVISED - R. BORO 06-11-08

**STATE OF ILLINOIS
 DEPARTMENT OF TRANSPORTATION**

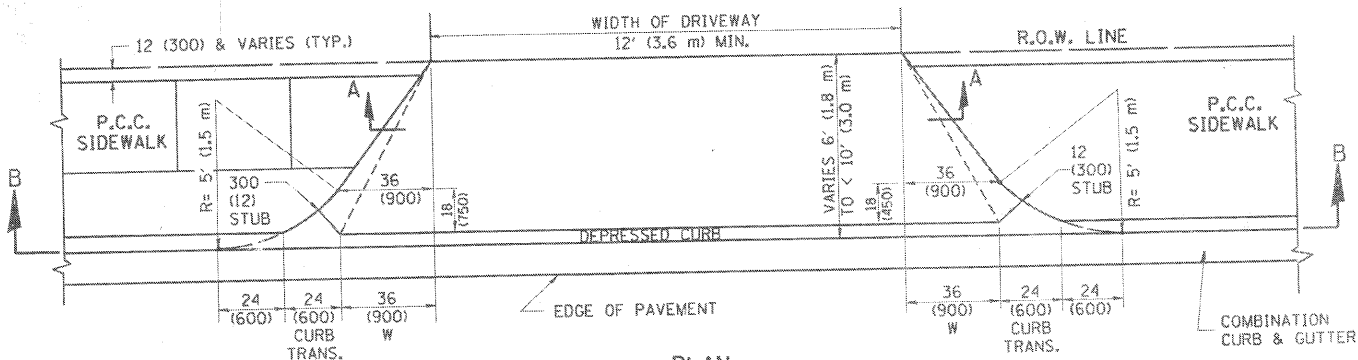
DRIVEWAY DETAILS - DISTANCE BETWEEN R.O.W.
 AND FACE OF CURB & EDGE OF SHOULDER >= 15' (4.5 m)

SCALE:	SHEET NO.	OF	SHEETS	STA.	TO STA.
--------	-----------	----	--------	------	---------

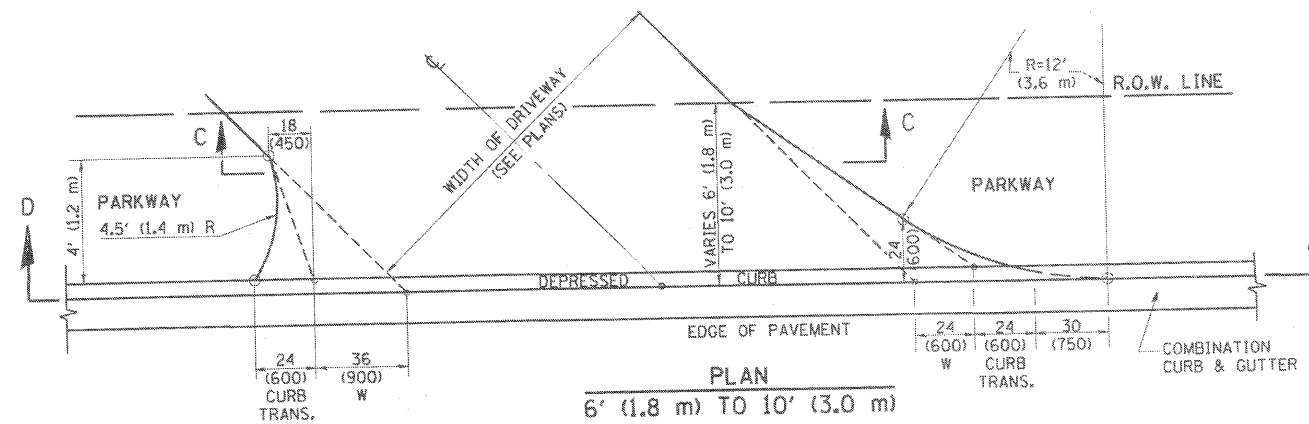
F.A.U. RTE.	SECTION	COUNTY	TOTAL SHEETS	SHEET NO.
0005	06-00057-00-BR	McHENRY	22	21
BD0156-07 (BD-01)			CONTRACT NO. 63508	
FED. ROAD DIST. NO. 1 (ILLINOIS) FED. AID PROJECT				



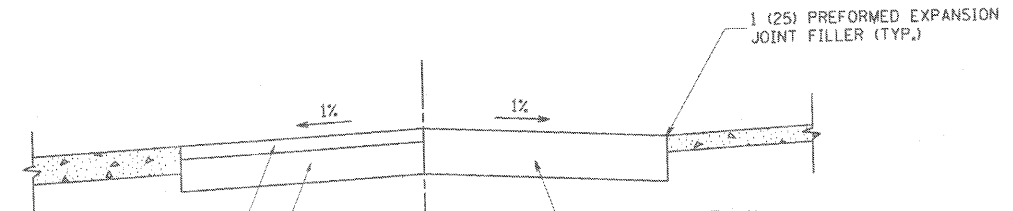
PLAN
10' (3.0 m) TO < 15' (4.5 m)



PLAN
6' (1.8 m) TO < 10' (3.0 m)



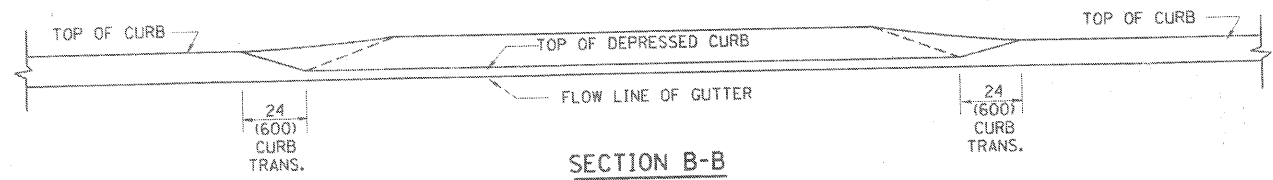
PLAN
6' (1.8 m) TO 10' (3.0 m)



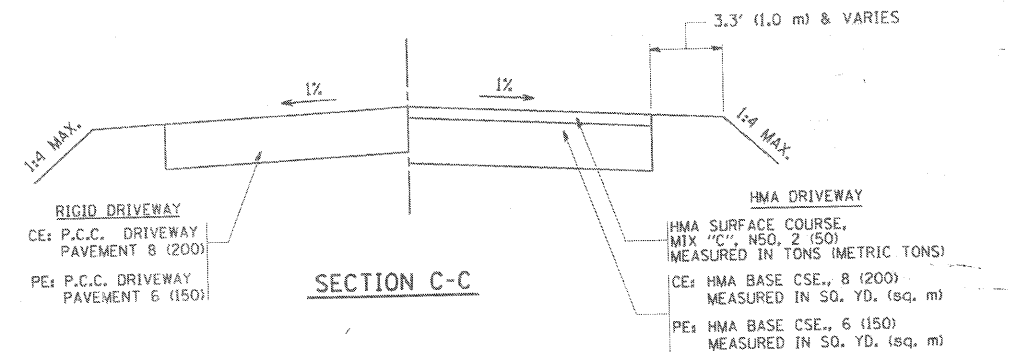
SECTION A-A

HMA DRIVEWAY
HMA SURFACE COURSE, MIX "C", N50, 2 (50) MEASURED IN TONS (METRIC TONS)
HMA BASE CSE., 8 (200) CE: MEASURED IN SQ. YD. (SQ. M.)
HMA BASE CSE., 6 (150) PE: MEASURED IN SQ. YD. (SQ. M.)

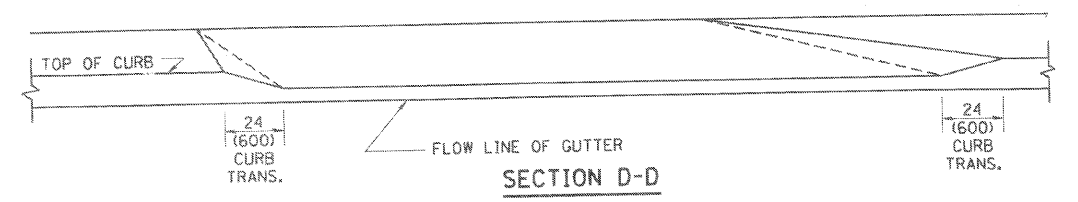
RIGID DRIVEWAY
P.C.C. DRIVEWAY PAVEMENT 8 (200)
RIGID DRIVEWAY CE: P.C.C. DRIVEWAY PAVEMENT 8 (200)
PE: P.C.C. DRIVEWAY PAVEMENT 6 (150)



SECTION B-B



SECTION C-C



SECTION D-D

GENERAL NOTES

DRIVEWAY SLOPES, LOCATIONS, & GEOMETRIC LAYOUT SHALL BE IN ACCORDANCE WITH THE LATEST EDITION OF THE "HANDBOOK FOR POLICY ON PERMITS FOR ACCESS DRIVEWAYS TO STATE HIGHWAYS". FOR FURTHER LAYOUT REQUIREMENTS, REFER TO ILLUSTRATION 10 IN THE PERMIT HANDBOOK. WHERE SIDEWALKS EXIST, DRIVEWAYS SHALL BE REPLACED WITH RIGID PAVEMENT. WHERE NO SIDEWALKS EXIST, DRIVEWAYS SHALL BE REPLACED IN KIND. SIDEWALK CROSS SLOPE THRU DRIVEWAY AREA TO BE A MAXIMUM OF 1:50.

WHEN THE DISTANCE BETWEEN R.O.W. AND THE BACK OF CURB IS EQUAL TO OR LESS THAN 8' (2.4 m), THE P.C.C. SIDEWALK SHALL EXTEND TO THE BACK OF CURB.

THE RESIDENT ENGINEER SHALL CONTACT THE TRAFFIC PERMIT OFFICE AT 847/ 705-4131 FOR ANY QUESTIONS ON DRIVEWAYS SHOWN IN THE PLANS; SPECIFICALLY IN REFERENCE TO ADDITIONAL AND/OR RELOCATION/REMOVAL OF A DRIVEWAY.

COMBINATION CONCRETE CURB & GUTTER SHALL BE MEASURED STRAIGHT ACROSS THE DRIVEWAY. NO ADDITIONAL COMPENSATION WILL BE ALLOWED FOR THE CURB & GUTTER TRANSITION.

THE 1 (25) PREFORMED EXPANSION JOINT FILLER WILL NOT BE PAID SEPARATELY, BUT SHALL BE CONSIDERED INCLUDED IN THE COST OF THE P.C.C. DRIVEWAY PAVEMENT OR P.C.C. SIDEWALK.

"W" VARIES FROM 36 (900) TO 5' (1.5 m) PROPORTIONAL TO THE LENGTH (L), FROM 6' (1.8 m) TO 10' (3 m).

ALL DIMENSIONS ARE IN INCHES (MILLIMETERS) UNLESS OTHERWISE NOTED.

COMPANY NAME: SEC GROUP, INC.
PROJECT CONTACT: Robert C. Davies
CLIENT: City of Havana
DATE PLOTTED: 8/16/2010 10:44 AM
FILE NUMBER: 880594-de084.dgn
PEN TABLE: Struct 22x34.tbl



USER NAME = whoad	DESIGNED - R. SHAH	REVISED - T. HOLTZ 04-08-97
FILE NAME = 880594-de084.dgn	DRAWN -	REVISED - M. GOMEZ 04-06-01
PLOT SCALE =	CHECKED -	REVISED - P. LaFLEUR 04-15-03
PLOT DATE = 8/16/2010	DATE - 11-06-95	REVISED - R. BORO 01-01-07

STATE OF ILLINOIS
DEPARTMENT OF TRANSPORTATION

DRIVEWAY DETAILS			
DISTANCE BETWEEN ROW AND FACE OF CURB < 15' (4.5 m)			
SCALE:	SHEET NO.	OF SHEETS	STA. TO STA.

F.A.U. RTE.	SECTION	COUNTY	TOTAL SHEETS	SHEET NO.
0005	06-00057-00-BR	McHENRY	22	22
BD400-02 (BD-02)			CONTRACT NO. 63508	
FED. ROAD DIST. NO. 1 ILLINOIS FED. AID PROJECT				