

DUNHAM ROAD ALIGNMENT

STATION	NORTHING	EASTING
POT 500+00.00	2,067,360.2673	923,280.9741
POT 506+52.66	2,067,353.0159	923,933.5917
POT 515+36.11	2,067,341.1430	924,816.9651
POT 520+00.00	2,067,336.4064	925,280.8320

BENCHMARKS

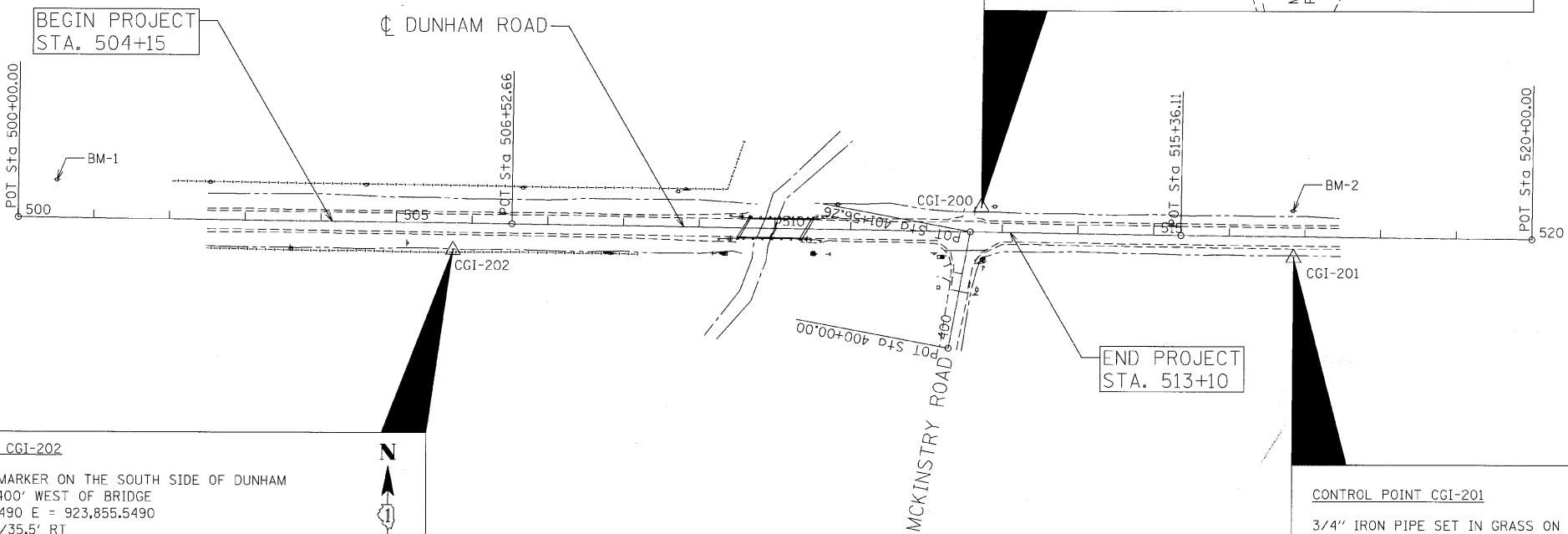
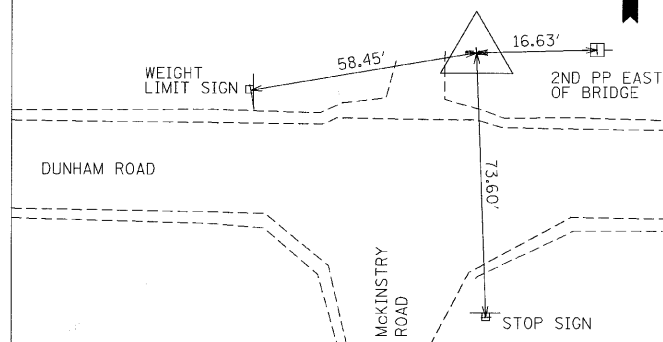
- BM 1 LARGE MAG NAIL IN FIFTH POWER POLE WEST OF BRIDGE NORTH OF DUNHAM ROAD
N = 2,067,409.7002 E = 923,332.0231 ELEV. = 872.66
- BM 2 LARGE MAG NAIL IN THIRD POWER POLE EAST OF BRIDGE NORTH OF DUNHAM ROAD
N = 2,067,373.6290 E = 924,965.4890 ELEV. = 875.03

MCKINSTRY ROAD ALIGNMENT

STATION	NORTHING	EASTING
POT 400+00.00	2,067,191.2680	924,510.0180
POT 401+56.26	2,067,344.8834	924,538.6697

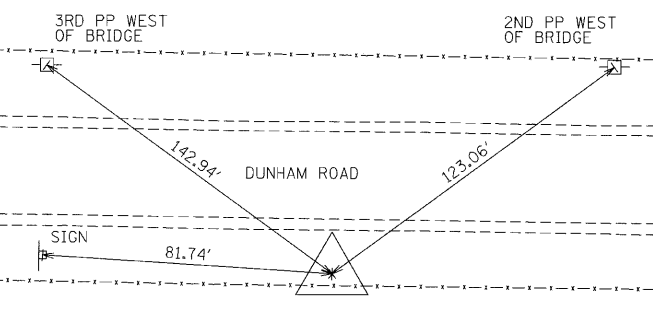
CONTROL POINT CGI-200

3/4" IRON PIPE W/ CAP FOUND ON NORTH SIDE OF DUNHAM ROAD EAST OF FIELD ENTRANCE ACROSS FROM MCKINSTRY ROAD
N = 2,067,377.4980 E = 924,553.4150
STA. 512+72.10/32.81' LT
ELEV = 871.06



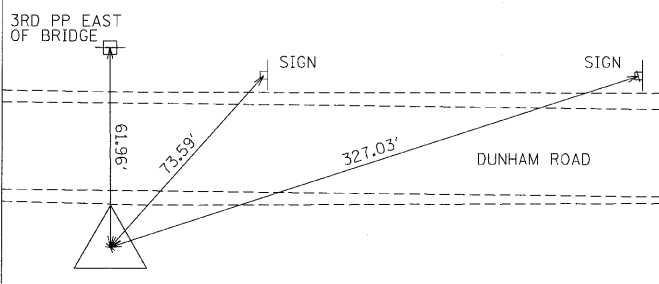
CONTROL POINT CGI-202

TOP OF R.O.W. MARKER ON THE SOUTH SIDE OF DUNHAM ROAD APPROX. 400' WEST OF BRIDGE
N = 2,067,318.5490 E = 923,855.5490
STA. 505+75.00/35.5' RT
ELEV = 869.37



CONTROL POINT CGI-201

3/4" IRON PIPE SET IN GRASS ON SOUTH SIDE OF DUNHAM ROAD ACROSS FROM THIRD POWER POLE EAST OF BRIDGE
N = 2,067,311.8000 E = 924,965.9010
STA. 516+85.34/27.82' RT
ELEV = 871.10



FILE NAME = m:\p\c\3381\3381.dwg; kuth\design\project\plan\3381.dwg; 06_alignments.dwg



Ciorba Group, Inc.
CONSULTING ENGINEERS
5507 North Cumberland Avenue, Suite 402
Chicago, Illinois 60658
Tel. 773.775.4009 Fax 773.775.4014

USER NAME = espina	DESIGNED - CLG	REVISED - 8/02/2010
PLOT SCALE = 100.0000' / IN.	DRAWN - EPS	REVISED -
PLOT DATE = 8/2/2010	CHECKED - MJL	REVISED -
	DATE - 6/18/2010	REVISED -

MCHENRY COUNTY DIVISION OF TRANSPORTATION

ALIGNMENT, TIES, & BENCHMARKS

SCALE: 1" = 100' SHEET NO. OF SHEETS STA. TO STA.

F.A.S. RTE.	SECTION	COUNTY	TOTAL SHEETS	SHEET NO.
1233	06-00321-00-BR	MCHENRY	48	7
FED. ROAD DIST. NO. 1 [ILLINOIS] FED. AID PROJECT			CONTRACT NO. 63516	