

STATE OF ILLINOIS
DEPARTMENT OF TRANSPORTATION

GENERAL NOTES

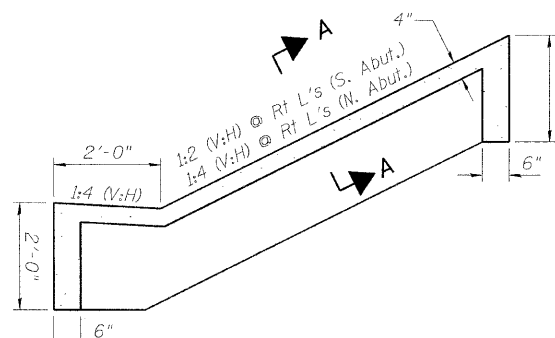
- Fasteners shall be AASHTO M164 Type 1, mechanically galvanized bolts. Bolts $\frac{1}{2}$ " ϕ , holes $\frac{15}{16}$ " ϕ , unless otherwise noted.
- Calculated weight of Structural Steel (M270 Grade 50) = 1,394,330 lbs.
Calculated weight of Structural Steel (M270 Grade 36) = 18,680 lbs.
- No field welding is permitted except as specified in the contract documents.
- Reinforcement bars shall conform to the requirements of ASTM A 706 Gr 60. See Special Provisions.
- Reinforcement bars designated (E) shall be epoxy coated.
- If the Contractor elects to use cantilever forming brackets on the exterior beams or girders, the brackets shall be placed at the same locations as required for the hardwood blocks in Article 503.06(b) of the Standard Specifications. If additional cantilever forming brackets are required, hardwood blocking shall be wedged between the exterior and first interior beam at each of these additional bracket locations.
- Plan dimensions and details relative to existing plans are subject to nominal construction variations. The Contractor shall field verify existing dimensions and details affecting new construction and make necessary approved adjustments prior to construction or ordering of materials. Such variations shall not be cause for additional compensation for a change in scope of the work, however, the Contractor will be paid for the quantity actually furnished at the unit price bid for the work.
- Bearing seat surfaces shall be constructed or adjusted to their designated elevations within a tolerance of $\frac{1}{8}$ inch (0.01 ft.). Adjustment shall be made either by grinding the surface or by shimming the bearings.
- Concrete Sealer shall be applied to the designated areas of the exposed surfaces of backwalls, bridge seats, and front faces of pile caps under abutment deck joints; and all exposed surface areas at piers within 10 ft. of the outer edge of shoulder.
- The existing structural steel coating contains lead. The Contractor shall take appropriate precautions to deal with the presence of lead on this project.
- The Organic Zinc Rich Primer / Epoxy / Urethane Paint System shall be used for painting of new structural steel except where otherwise noted. The entire system shall be shop applied, with the exception that masked off connection surfaces, field installed fasteners and damaged areas shall be touched up in the field. The color of the final finish coat for all interior steel surfaces shall be Gray, Munsell No. 5B 7/1. The color of the final finish coat for the exterior and bottom flange of the fascia beams shall be Reddish Brown, Munsell No. 2.5YR 3/4. See Special Provision for "Cleaning and Painting New Metal Structures".
- The embankment configuration shown shall be the minimum that must be placed and compacted prior to construction of the abutments.
- The concrete for bridge decks finished according to Article 503.16(a) of the Standard Specifications shall be placed and compacted parallel to the skew in uniform increments along centerline of bridge. The machine used for finishing shall be set parallel to the skew for striking off and screeding the concrete.

INDEX OF DRAWINGS

- General Plan & Elevation
- General Notes, Index of Sheets & Total Bill of Material
- Stage Construction - Substructure
- Substructure Excavation Details
- Stage Construction - Superstructure
- Temporary Concrete Barrier
- Top of Slab Elevations - Plan and Details
- Top of Slab Elevations (1 of 5)
- Top of Slab Elevations (2 of 5)
- Top of Slab Elevations (3 of 5)
- Top of Slab Elevations (4 of 5)
- Top of Slab Elevations (5 of 5)
- Top of Approach Slab Elevations - South Approach
- Top of Approach Slab Elevations - North Approach
- Deck Plan - Southbound Spans 1 and 2
- Deck Plan - Southbound Spans 3 and 4
- Deck Cross Section - Southbound
- Deck Plan - Northbound Spans 1 and 2
- Deck Plan - Northbound Spans 3 and 4
- Deck Cross Section - Northbound
- Parapet Elevations
- Parapet Details
- Superstructure Details & Bill of Material
- Preformed Joint Strip Seal
- Drainage Scupper DS-II
- Approach Slab Plan South Approach - Southbound
- Approach Slab Plan South Approach - Northbound
- Approach Slab Sections and Details - South Approach
- Approach Slab Plan North Approach - Southbound
- Approach Slab Plan North Approach - Northbound
- Approach Slab Sections and Details - North Approach
- General Framing Plan
- Girder Layout
- Framing Plan Southbound - Spans 1 and 2
- Framing Plan Southbound - Spans 3 and 4
- Framing Plan Northbound - Spans 1 and 2
- Framing Plan Northbound - Spans 3 and 4
- Girder Elevation
- Shear Stud Layout
- Diaphragm Details
- Camber Diagram and Top of Web Elevations
- Moment and Reaction Table & Steel Details
- Bearing Details (1 of 2)
- Bearing Details (2 of 2)
- South Abutment - Southbound Plan & Elevation
- South Abutment - Northbound Plan & Elevation
- South Abutment Details
- North Abutment - Southbound Plan & Elevation
- North Abutment - Northbound Plan & Elevation
- North Abutment Details
- Pier 1 - Southbound
- Pier 1 - Northbound
- Pier 2 - Southbound
- Pier 2 - Northbound
- Pier 3 - Southbound
- Pier 3 - Northbound
- Pier Details & Bill of Material
- Bar Splicer Assembly Details
- HP Pile Details
- Boring Logs (1 of 2)
- Boring Logs (2 of 2)

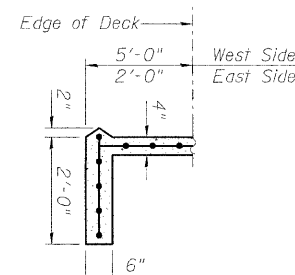
TOTAL BILL OF MATERIAL

ITEM	UNIT	SUPER	SUB	TOTAL
Porous Granular Embankment, Special	Cu. Yd.	608		608
Removal of Existing Structures	Each			1
Protective Shield	Sq. Yd.	1636		1636
Structure Excavation	Cu. Yd.		918	918
Concrete Structures	Cu. Yd.		1565.5	1565.5
Concrete Superstructure	Cu. Yd.	1418.1		1418.1
Bridge Deck Grooving	Sq. Yd.	4085		4085
Protective Coat	Sq. Yd.	4856		4856
Furnishing and Erecting Structural Steel	L. Sum	1		1
Stud Shear Connectors	Each	18566		18566
Reinforcement Bars, Epoxy Coated	Pound	357,900	207,010	564,910
Bar Splicers	Each	326	72	398
Slope Wall 4 Inch	Sq. Yd.		1339	1339
Furnishing Steel Piles HP12x53	Foot		9638	9638
Driving Piles	Foot		9638	9638
Test Pile Steel HP12x53	Each		5	5
Pile Shoes	Each		387	387
Temporary Sheet Piling	Sq. Ft.		1536	1536
Name Plates	Each		1	1
Preformed Joint Strip Seal	Foot	323.5		323.5
Anchor Bolts, 1 1/4"	Each	210		210
Concrete Sealer	Sq. Ft.		17965	17965
Geocomposite Wall Drain	Sq. Yd.		321	321
Pipe Underdrains for Structures 4"	Foot		370	370
Conduit Embedded in Structure 2" Dia., PVC	Foot	523	46	569
Junction Box, Stainless Steel, Embedded in Structure, 12"x10"x6"	Each		4	4
Braced Excavation	Cu. Yd.		1067	1067
Elastomeric Bearing Assembly, Type I (Special)	Each	42		42
Elastomeric Bearing Assembly, Type II (Special)	Each	42		42
Drainage Scupper, DS-II	Each	2		2

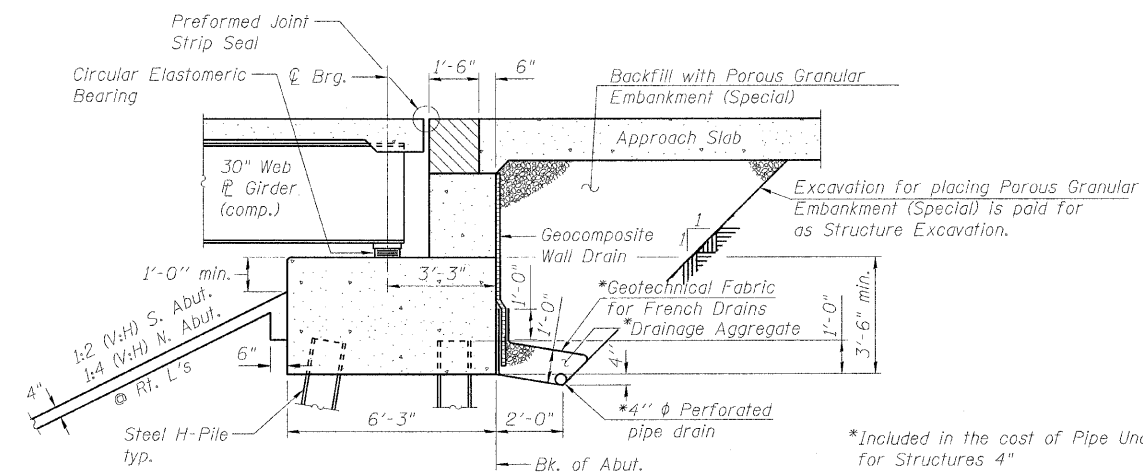


SECTION THRU SLOPEWALL

Slope wall shall be reinforced with welded wire fabric, 6 in. x 6 in. - W4.0 x W4.0, weighing 58 lbs. per 100 sq. ft.



SECTION A-A



SECTION THRU ABUTMENT

(Horiz. dim. @ Rt. L's)

*Included in the cost of Pipe Underdrains for Structures 4"

Note:
All drainage system components shall extend parallel to the abutment back wall until they intersect the wingwalls or 2'-0" from the end of the wingwalls when the wings are parallel to the abutment. The pipe shall extend under the wingwall, if necessary, until intersecting the side slopes. The pipes shall drain into concrete headwalls. (See Article 601.05 of the Standard Specifications and Highway Standard 60110).

GENERAL NOTES, INDEX OF SHEETS
& TOTAL BILL OF MATERIAL
STRUCTURE NO. 101-0190

SHEET NO. 2	F.A.* RTE.	SECTION	COUNTY	TOTAL SHEETS	SHEET NO.
61 SHEETS	*	1-HBR & 1-2HB-D	WINNEBAGO	216	57
		IL RTE 251 & FOREST HILLS RD		CONTRACT NO. 64B79	
		FED. ROAD DIST. NO. 7		ILLINOIS FED. AID PROJECT	

* F.A.P. 303 & F.A.U. 5146

Revised 10/25/10 BHS

10/19/2010 11:11:35 AM g:\projects\20082773_001\cadd\structural\sheet\1010190-64B79-002-GeneralData.dgn