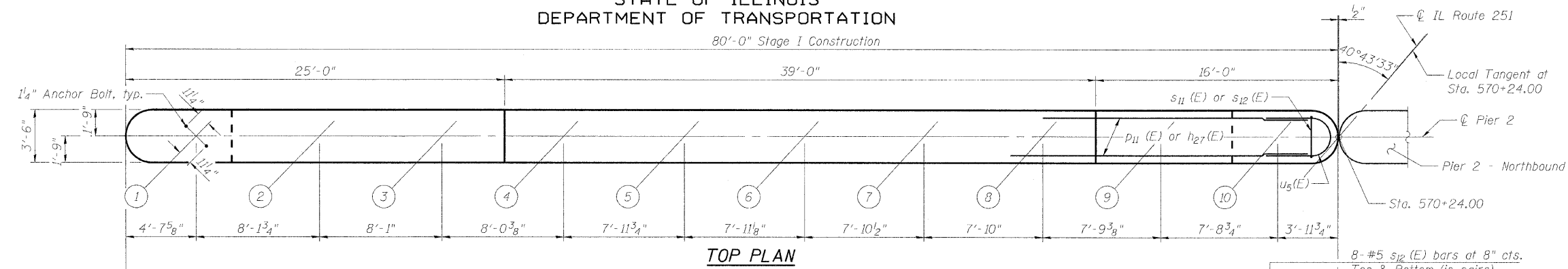
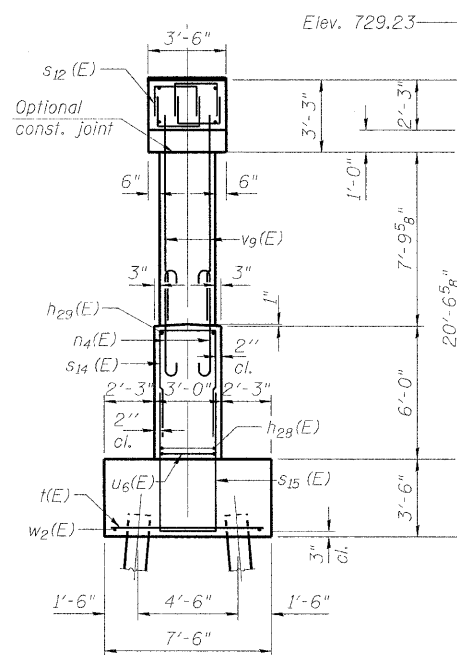


STATE OF ILLINOIS
DEPARTMENT OF TRANSPORTATION

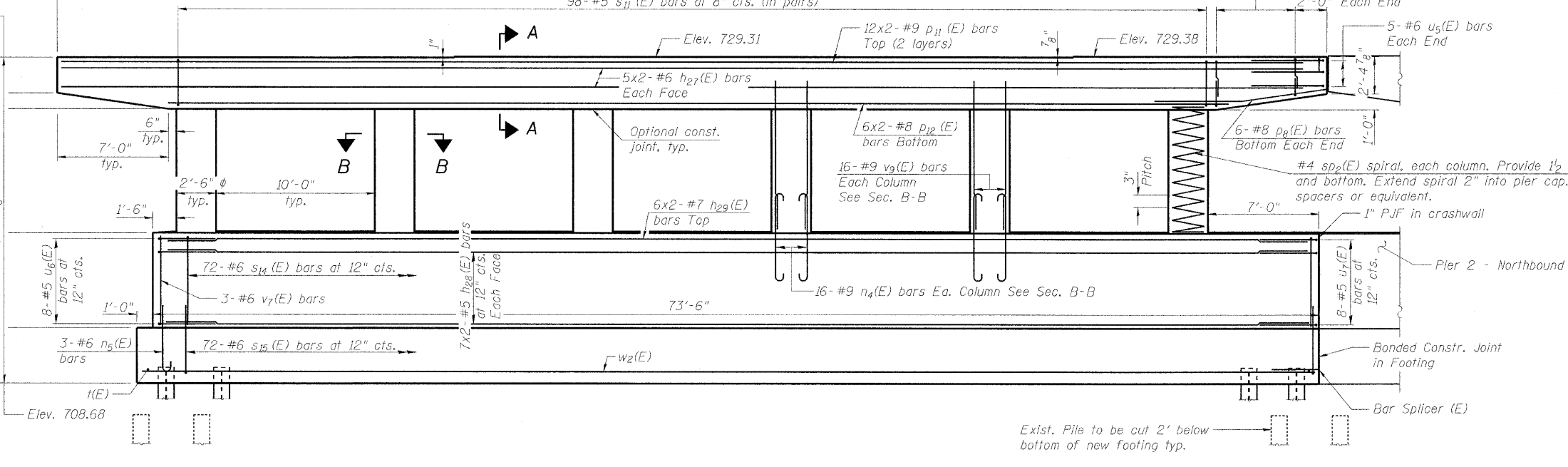
80'-0" Stage I Construction



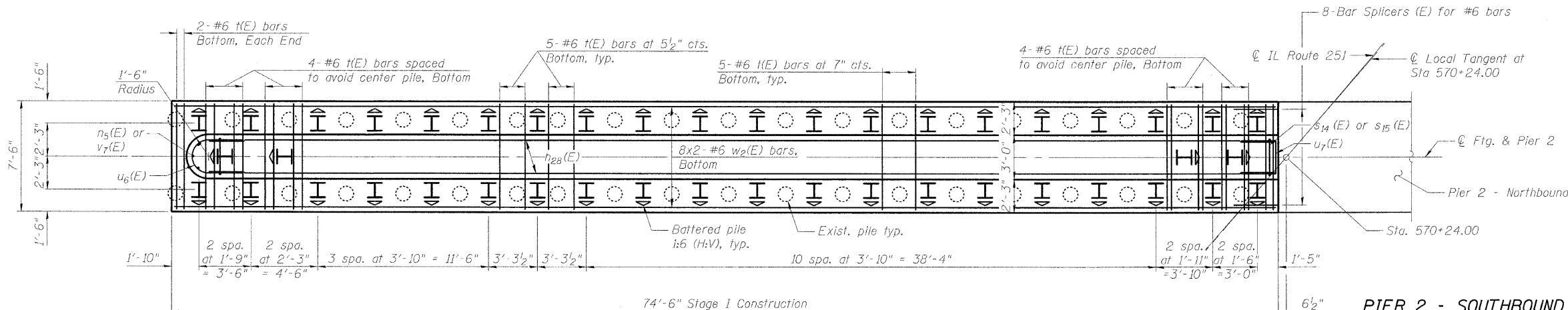
TOP PLAN



END VIEW



ELEVATION
(Looking North)



FOOTING PLAN

MINIMUM BAR LAPS

- (Piers)
- #5 Bar - 3'-3"
 - #6 Bar - 3'-10"
 - #7 Bar - 5'-10"
 - #8 Bar - 6'-9"
 - #9 Bar - 9'-8"

Note:
For Section A-A, B-B and Bill of Material, see Sheet 57 of 61.

PILE DATA

Type: Steel HP 12x53
Nominal Required Bearing: 318 kips
Factored Resistance Available: 175 kips
Est. Length: 25 ft
No. Production Piles: 43
No. Test Piles: 1

DESIGNED	JY
CHECKED	GSP
DRAWN	MJB
CHECKED	JY

SHEET NO. 53	F.A.* RTE.	SECTION	COUNTY	TOTAL SHEETS	SHEET NO.
	*	1-HBR & 1-2HB-D	WINNEBAGO	216	108
61 SHEETS	IL RTE 251 & FOREST HILLS RD		CONTRACT NO. 64B79		
FED. ROAD DIST. NO. 7 ILLINOIS FED. AID PROJECT					

* F.A.P. 303 & F.A.U. 5146

Revised 10/25/10 BHS

10/19/2010 11:44:29 AM g:\projects\2082773_001\cadd\structural\sheets\1010190-64B79-053-Pier2_SB.dgn

