

| | | | | |
|---------------------------------------|-----------------|-----------|--------------------|-----------|
| F.A.A. RTE. | SECTION | COUNTY | TOTAL SHEETS | SHEET NO. |
| * | 1-HBR & 1-2HB-D | WINNEBAGO | 216* | 1 |
| IL RTE 251 & FOREST HILLS RD ILLINOIS | | | CONTRACT NO. 64B79 | |
| * F.A.P. 303 & F.A.U. 5146 | | | * 216 + 3 = 219 | |

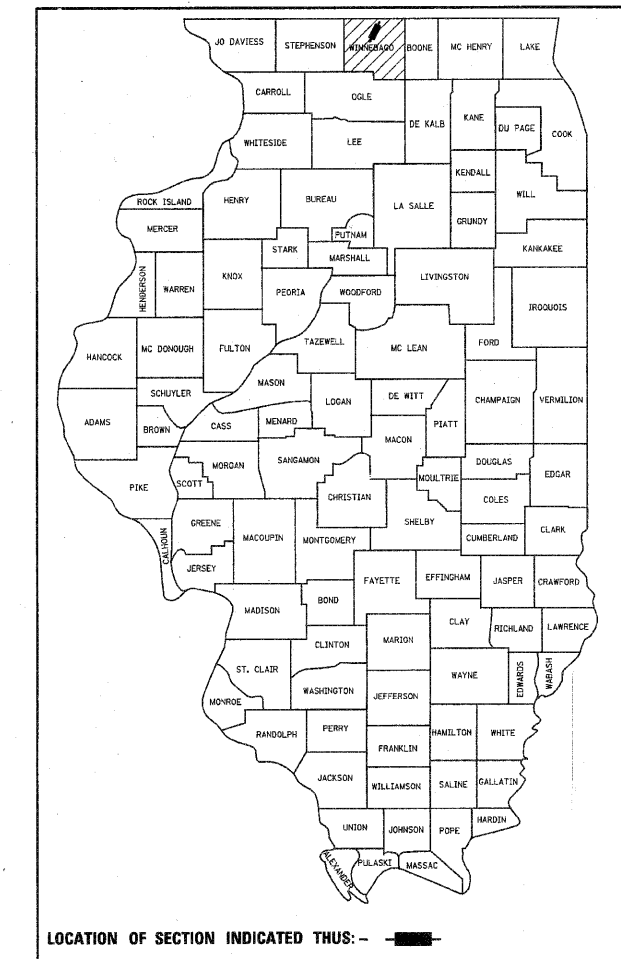
STATE OF ILLINOIS
DEPARTMENT OF TRANSPORTATION
DIVISION OF HIGHWAYS

**PROPOSED
HIGHWAY PLANS**

FAP ROUTE 303 (IL ROUTE 251) OVER SPRING CREEK ROAD
FAU ROUTE 5146 (FOREST HILLS ROAD) OVER IL ROUTE 251
SECTION 1-HBR & 1-2HB-D
PROJECT ACBRM-ACF-ARRA-000S(829)
WINNEBAGO COUNTY
C-92-161-10

FOR INDEX OF SHEETS, SEE SHEET NO. 2

D-92-144-05



FOREST HILLS ROAD
PROJECT ENDS
STA 603 + 12.25

ROCKFORD TOWNSHIP, SECTIONS 7, 12 & 13

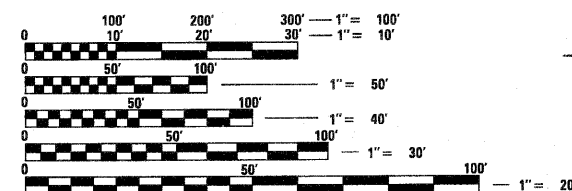
FOREST HILLS ROAD
PROJECT BEGINS
STA 595 + 41.50

IL 251 PROJECT BEGINS
STA 564 + 55.00

STRUCTURE NUMBER:
EX SN 101-0123

IL 251 PROJECT ENDS
STA 573 + 90.00

STRUCTURE NUMBER:
EX SN 101-0042
PR SN 101-0190



FULL SIZE PLANS HAVE BEEN PREPARED USING STANDARD ENGINEERING SCALES. REDUCED SIZED PLANS WILL NOT CONFORM TO STANDARD SCALES. IN MAKING MEASUREMENTS ON REDUCED PLANS, THE ABOVE SCALES MAY BE USED.

J.U.L.I.E.
JOINT UTILITY LOCATION INFORMATION FOR EXCAVATION
1-800-892-0123
OR 811

PROJECT ENGINEER: MASOOD AHMAD (815) 284-5510
PROJECT MANAGER: TRACI HELFRICH (815) 284-5932
EMAIL: traci.helfrich@illinois.gov

CONTRACT NO. 64B79

IL 251 GROSS LENGTH = 935.00 FT. = 0.177 MILE
IL 251 NET LENGTH = 935.00 FT. = 0.177 MILE
FOREST HILLS RD GROSS LENGTH = 886.75 FT. = 0.168 MILE
FOREST HILLS RD NET LENGTH = 886.75 FT. = 0.168 MILE

FAP ROUTE 303 (IL 251)

FAU ROUTE 5146 FOREST HILLS RD

SECTION 1-HBR & 1-2HB-D

WINNEBAGO COUNTY

PRINTED BY THE AUTHORITY
OF THE STATE OF ILLINOIS

STATE OF ILLINOIS
DEPARTMENT OF TRANSPORTATION
DIVISION OF HIGHWAYS

SUBMITTED Sept. 1 20 10
Shane F. Ryan
DEPUTY DIRECTOR OF HIGHWAYS, REGION ENGINEER

October 1 20 10
Scott E. Still, P.E.
acting ENGINEER OF DESIGN AND ENVIRONMENT

October 1 20 10
Christine M. Reed
DIRECTOR OF HIGHWAYS, CHIEF ENGINEER