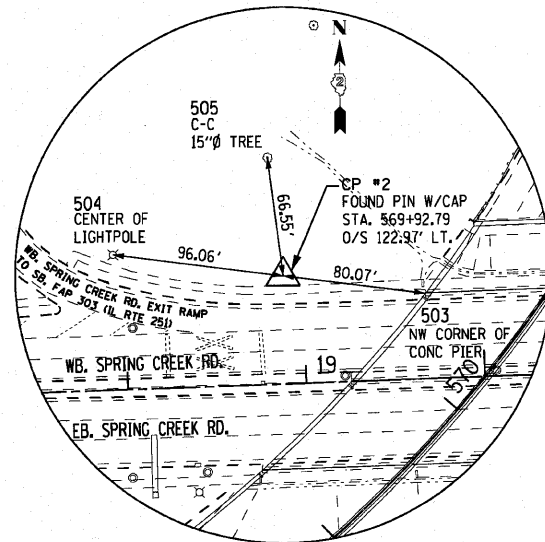
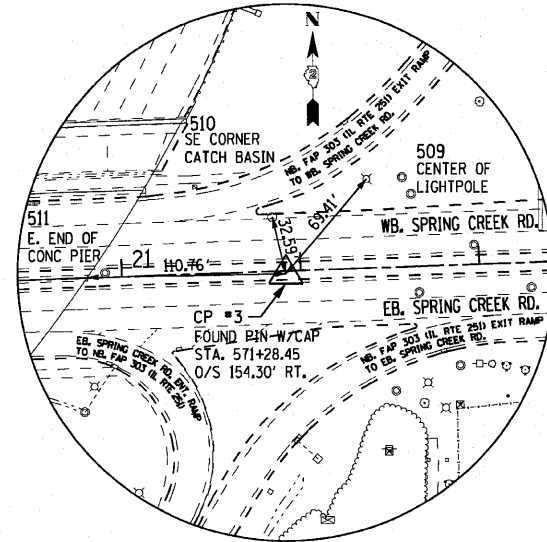


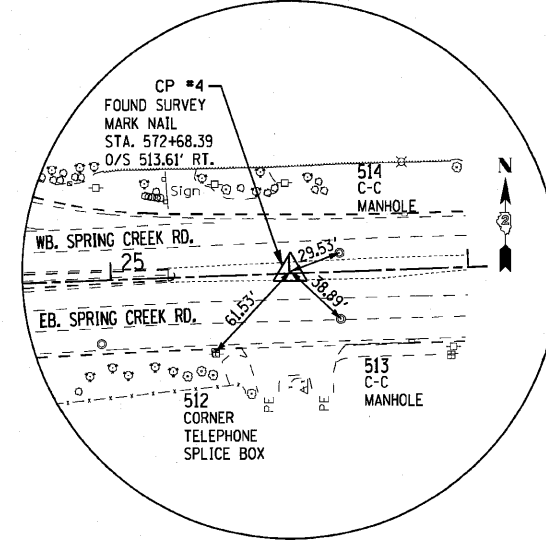
POINT No. 1



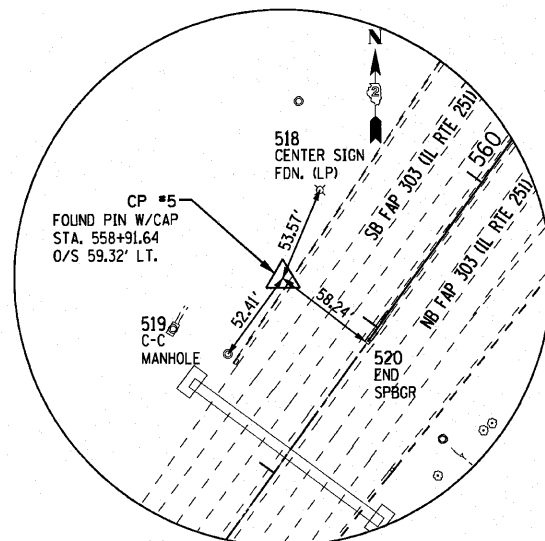
POINT No. 2



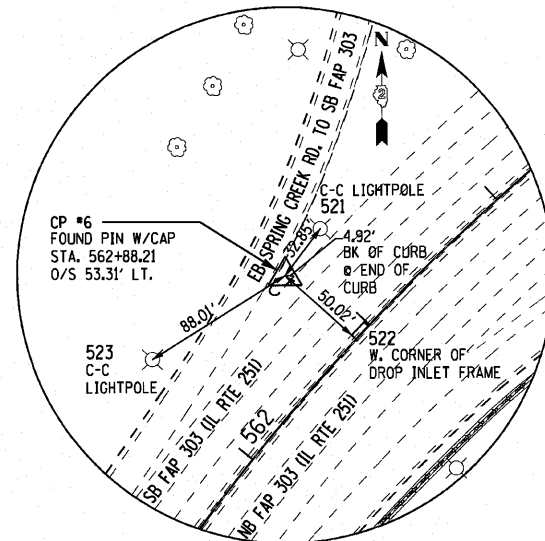
POINT No. 3



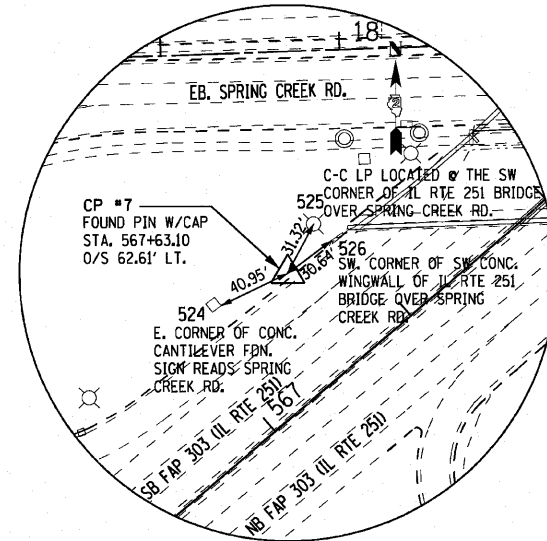
POINT No. 4



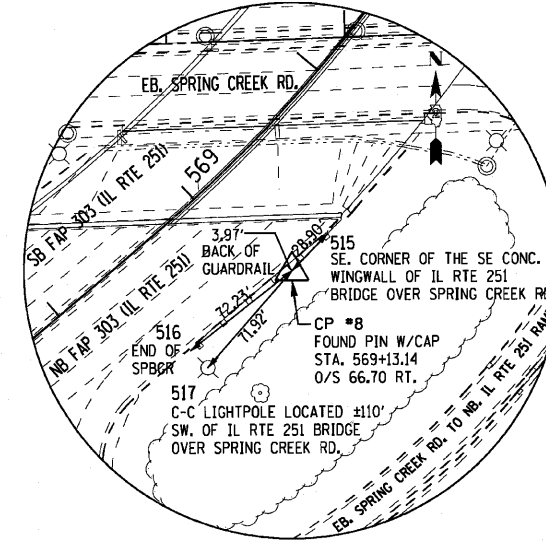
POINT No. 5



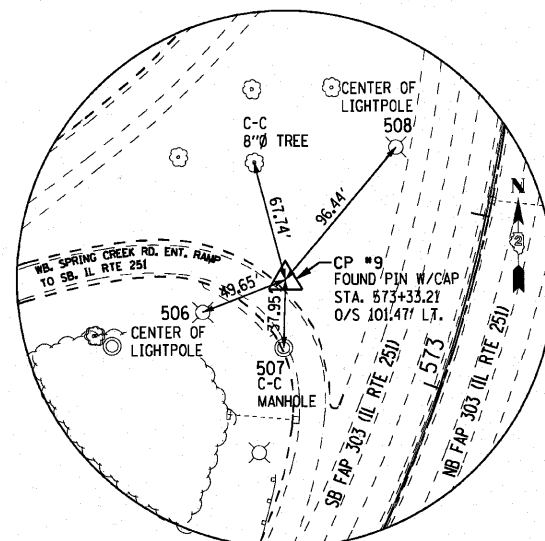
POINT No. 6



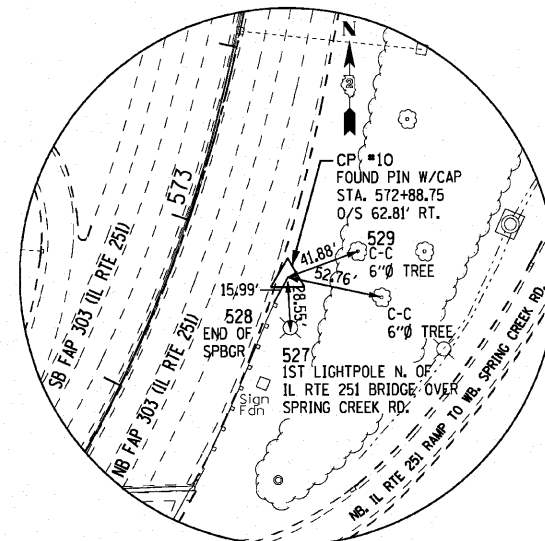
POINT No. 7



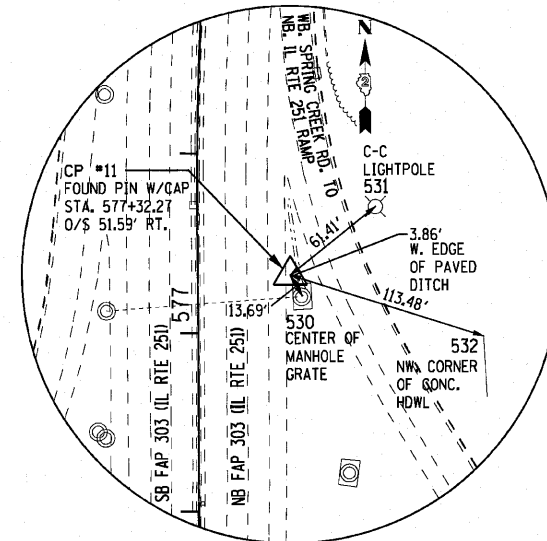
POINT No. 8



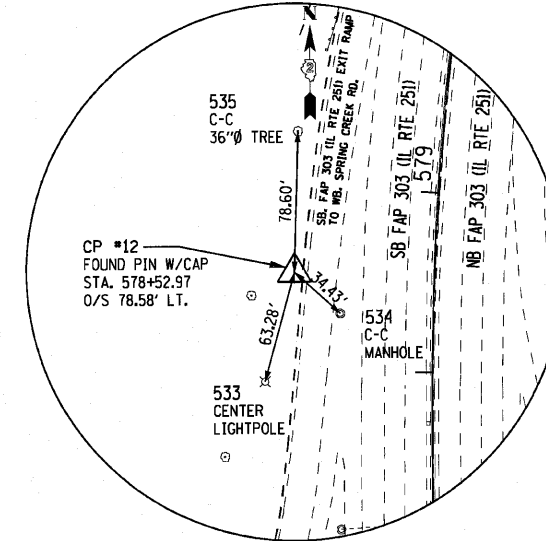
POINT No. 9



POINT No. 10



POINT No. 11



POINT No. 12

FILE NAME =	USER NAME = zpiend	DESIGNED - DLP	REVISED -	<b>STATE OF ILLINOIS</b> <b>DEPARTMENT OF TRANSPORTATION</b>	<b>FAP ROUTE 303 (IL ROUTE 251) OVER SPRING CREEK ROAD</b> <b>ALIGNMENT, TIES AND BENCHMARKS (HORIZONTAL CONTROL POINTS)</b>		F.A.*	SECTION	COUNTY	TOTAL SHEETS	SHEET NO.	
Gi:\projects\2282773.001\CADD\Civil\Sh\1024979-shr-A18_02.dgn		DRAWN - ENTRAN	REVISED -		SCALE: 1" = 100'		SHEET NO.	OF	SHEETS	STA.	TO	STA.
PLOT SCALE = 100.00' / IN.		CHECKED - TMH	REVISED -		ALIGNMENT, TIES AND BENCHMARKS (HORIZONTAL CONTROL POINTS)		*	1-HBR & 1-2HB-D	WINNEBAGO	216	29	
PLOT DATE = 8/30/2010		DATE - 08/30/10	REVISED -		SCALE: 1" = 100'		FED. ROAD DIST. NO.	ILLINOIS FED. AID PROJECT				

\* F.A.P. 303 & F.A.U. 5146