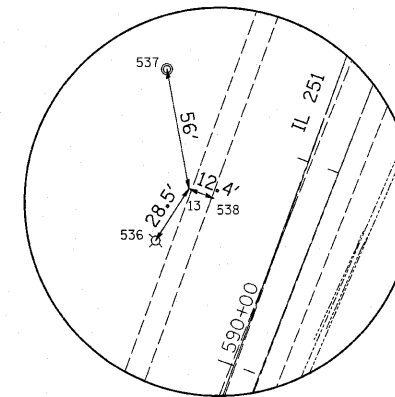
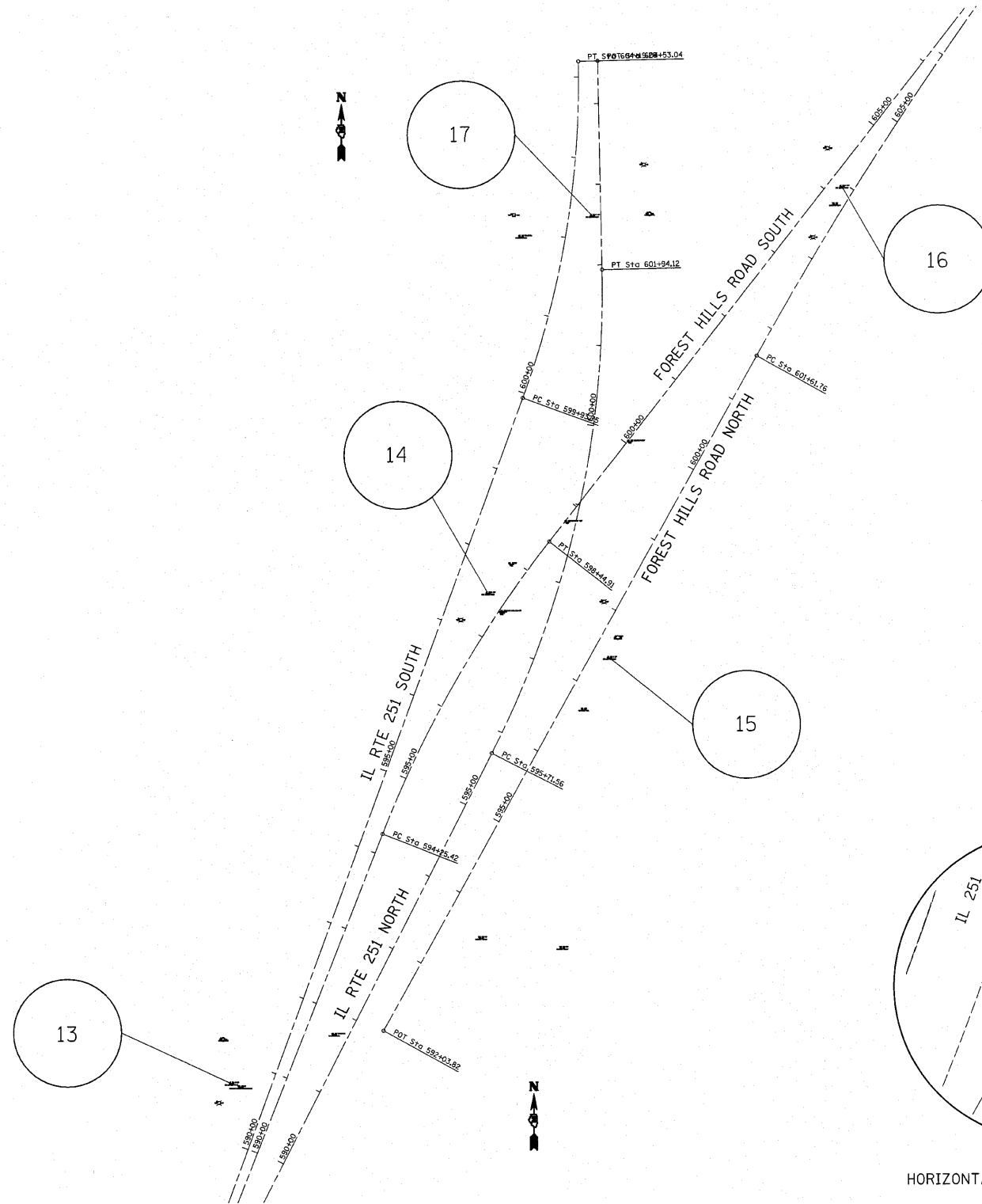


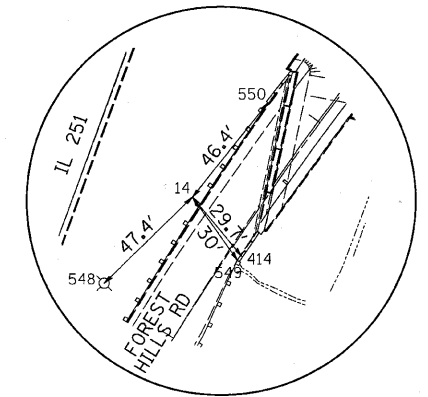
# HORIZONTAL & VERTICAL CONTROL

## HORIZONTAL CONTROL POINTS

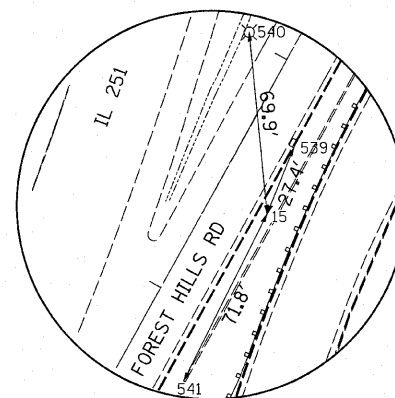
POINT	NORTH	EAST	ELEVATION	CHAIN	STATION	OFFSET	DESCRIPTION
13	2051638.4635	2596185.3562	723.7908	251NBPG	590+59.4833	102.7101' LT	GPS CONTROL POINT, PIN
14	2052246.2555	2596505.9827	743.3131	251NBPG	597+59.3168	81.1268' LT	GPS CONTROL POINT, PIN
15	2052165.7091	2596656.7384	726.3017	251NBPG	597+32.8438	87.7331' RT	GPS CONTROL POINT, PIN
16	2052749.8010	2596946.9411	733.8333	251NBPG	602+89.8552	300.4709' RT	GPS CONTROL POINT, PIN
17	2052714.4822	2596636.5791	725.1531	251NBPG	602+60.7606	10.5363' LT	GPS CONTROL POINT, PIN



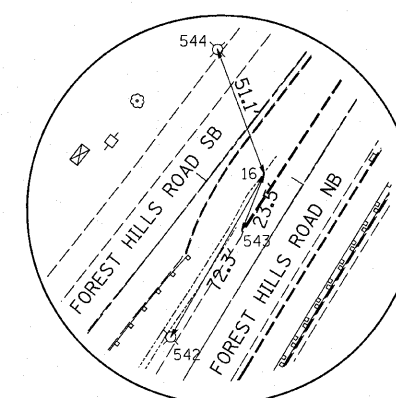
HORIZONTAL CONTROL POINT NO. 13



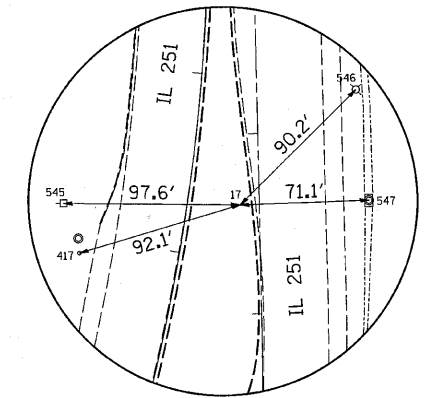
HORIZONTAL CONTROL POINT NO. 14



HORIZONTAL CONTROL POINT NO. 15



HORIZONTAL CONTROL POINT NO. 16



HORIZONTAL CONTROL POINT NO. 17

FILE NAME =	USER NAME = goffjl	DESIGNED -	REVISED -
c:\pwork\pwork\goffjl\dms41657\0214465-shr-HVC.dgn		DRAWN -	REVISED -
		CHECKED -	REVISED -
		DATE -	REVISED -

STATE OF ILLINOIS  
DEPARTMENT OF TRANSPORTATION

FOREST HILLS RD OVER IL 251  
HORIZONTAL & VERTICAL CONTROL

SCALE:	SHEET NO.	OF	SHEETS	STA.	TO	STA.
--------	-----------	----	--------	------	----	------

F.A.* RTE.	SECTION	COUNTY	TOTAL SHEETS	SHEET NO.
•	1-HBR & 1-2HB-D	WINNEBAGO	216	26
CONTRACT NO. 64B79				
ILLINOIS FED. AID PROJECT				

• F.A.P. 303 & F.A.U. 5146