
 HMA SURFACE REMOVAL 2 1/2"
 PAVED SHOULDER REMOVAL

CURB REMOVAL
 STA 597+18.20 TO STA 597+78.70 LT
 STA 595+38.10 TO STA 596+38.10 RT
 GUARDRAIL REMOVAL
 STA 593+45 TO STA 597+98 LT
 STA 595+38.10 TO STA 596+38.10 RT

EXISTING BRIDGE - SN 101-0123
 WITH PROPOSED DECK REPLACEMENT
 SEE STRUCTURE PLANS FOR DETAILS

APPROACH SLAB REMOVAL
 PAVEMENT REMOVAL
 GUARDRAIL REMOVAL
 STA 600+97.10 TO STA 603+72.10 RT
 STA 601+47.20 TO STA 602+47.20 LT

HOT-MIX ASPHALT SURFACE REMOVAL 2 1/2"

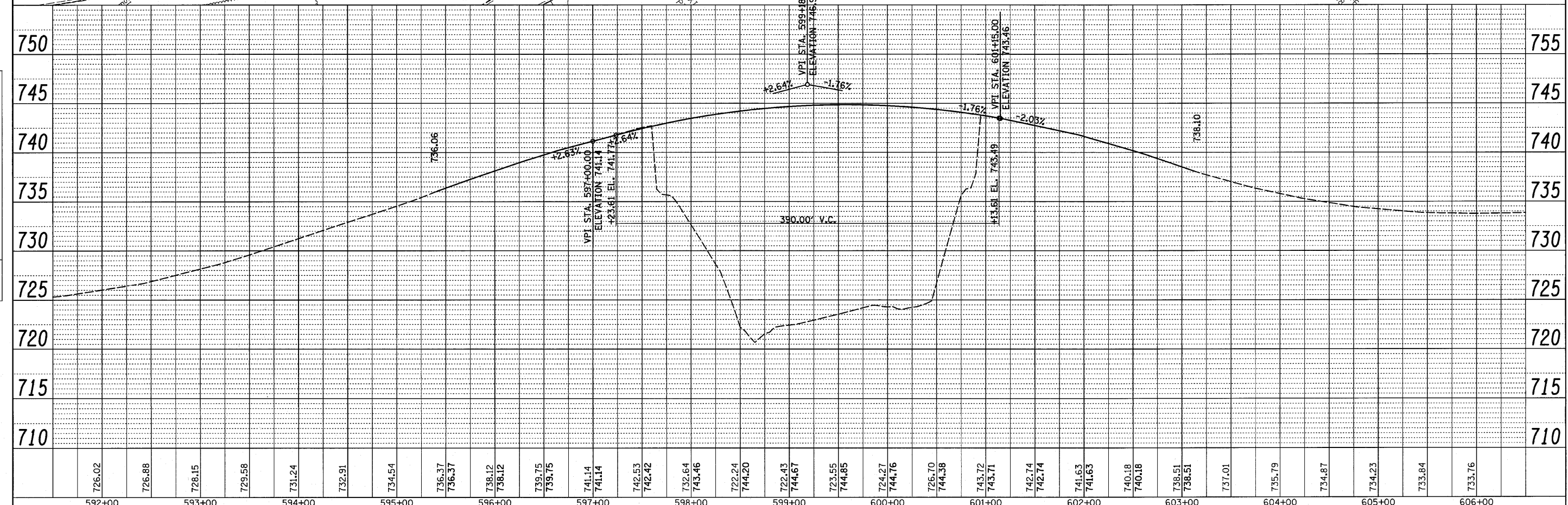
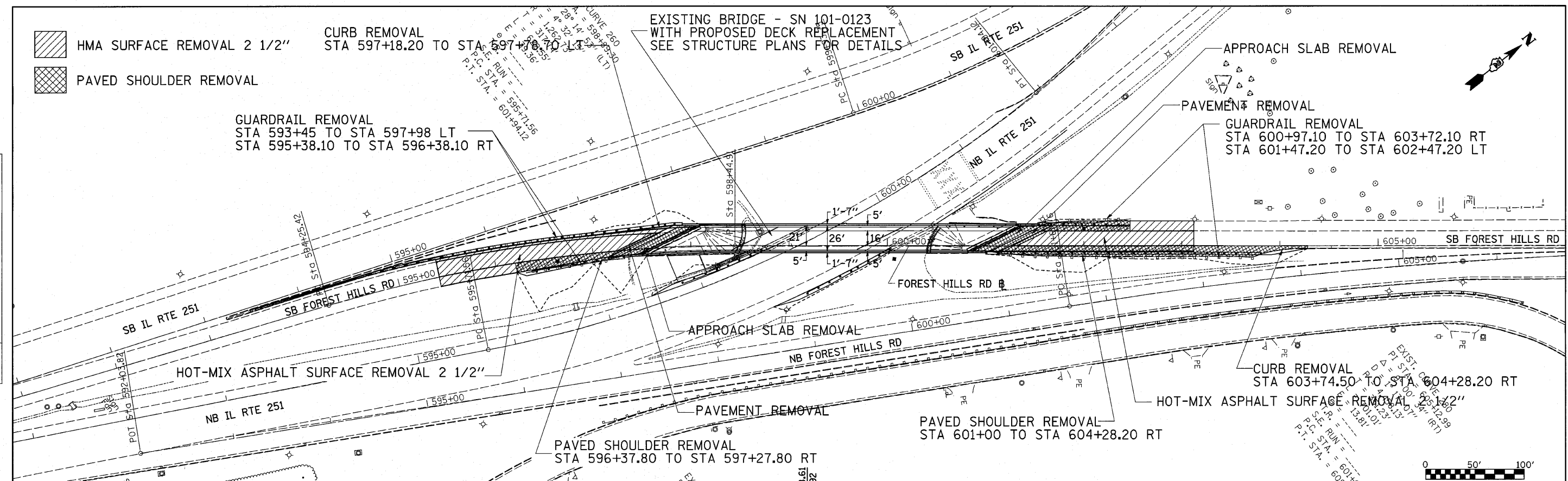
PAVED SHOULDER REMOVAL
STA 596+37.80 TO STA 597+27.80 RT

PAVED SHOULDER REMOVAL
STA 601+00 TO STA 604+28.20 RT

CURB REMOVAL
 STA 603+74.50 TO STA 604+28.20 RT
 HOT-MIX ASPHALT SURFACE REMOVAL 2 1/2"

PLAN
 SURVEYED BY _____ DATE _____
 CHECKED BY _____
 DATE _____
 NO. _____

PROFILE
 SURVEYED BY _____ DATE _____
 CHECKED BY _____
 DATE _____
 NO. _____



FILE NAME =	USER NAME = goffjl	DESIGNED -	REVISED -	STATE OF ILLINOIS DEPARTMENT OF TRANSPORTATION	REMOVAL SHEET SB FOREST HILLS RD				F.A.A. RTE.	SECTION	COUNTY	TOTAL SHEETS	SHEET NO.
o:\pwork\pwork\goffjl\dms41657\dl4405p.dgn		DRAWN -	REVISED -		SCALE:	SHEET NO.	OF	SHEETS	STA.	TO STA.	WINNEBAGO	216	30
		CHECKED -	REVISED -								IL RTE 251 & FOREST HILLS RD		
		DATE -	REVISED -								FED. ROAD DIST. NO.	ILLINOIS FED. AID PROJECT	

* F.A.P. 303 & F.A.U. 5146