

MOUNTED OVER CANTILEVER SIGN AT 45°
(TYPICAL-ALL SIGNS)

1 1/2" P HMA SC "E" N70
1" P LEV BIND MM N70
PLACED IN MOT PRE-STAGE B

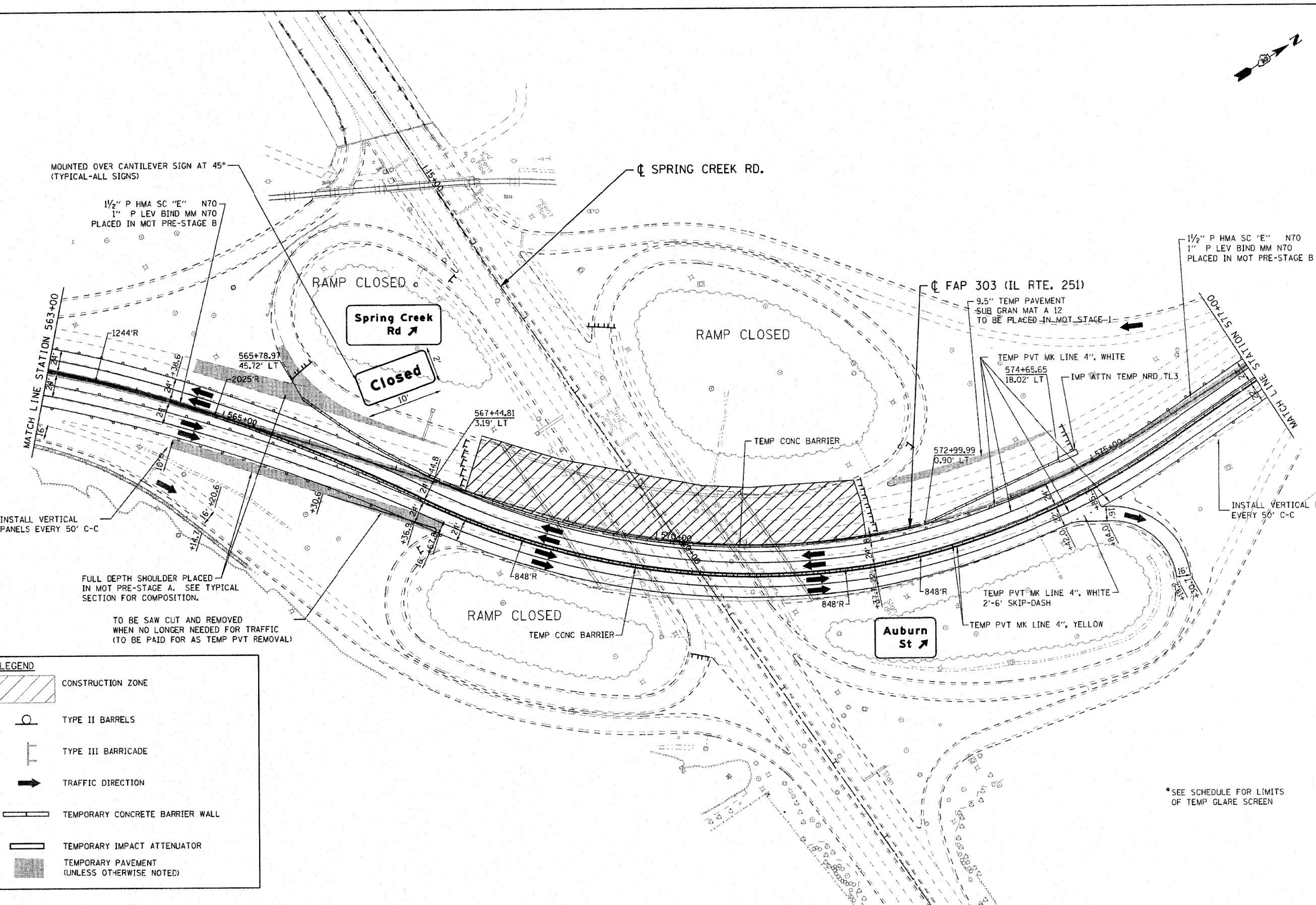
1 1/2" P HMA SC "E" N70
1" P LEV BIND MM N70
PLACED IN MOT PRE-STAGE B

INSTALL VERTICAL
PANELS EVERY 50' C-C

FULL DEPTH SHOULDER PLACED
IN MOT PRE-STAGE A. SEE TYPICAL
SECTION FOR COMPOSITION.

TO BE SAW CUT AND REMOVED
WHEN NO LONGER NEEDED FOR TRAFFIC
(TO BE PAID FOR AS TEMP PVT REMOVAL)

LEGEND	
	CONSTRUCTION ZONE
	TYPE II BARRELS
	TYPE III BARRICADE
	TRAFFIC DIRECTION
	TEMPORARY CONCRETE BARRIER WALL
	TEMPORARY IMPACT ATTENUATOR
	TEMPORARY PAVEMENT (UNLESS OTHERWISE NOTED)



INSTALL VERTICAL PANELS
EVERY 50' C-C

*SEE SCHEDULE FOR LIMITS
OF TEMP GLARE SCREEN

FILE NAME =	USER NAME = zbanid	DESIGNED - DLP	REVISED -	STATE OF ILLINOIS DEPARTMENT OF TRANSPORTATION	FAP ROUTE 303 (IL ROUTE 251) OVER SPRING CREEK ROAD IL ROUTE 251 MAINTENANCE OF TRAFFIC - STAGE 1				F.A.P. RTE.	SECTION	COUNTY	TOTAL SHEETS	SHEET NO.
PROJECT = 2082773_001\CAD\Civil\54\102	48791-ah-met-ill251_02.dgn	DRAWN - ENTRAN	REVISED -		SCALE: 1" = 50'	SHEET NO.	OF	SHEETS	STA.	TO STA.	WINNEBAGO	216	38
	PLOT SCALE = 58.88 1/2 IN.	CHECKED - TMH	REVISED -								IL RTE 251 & FOREST HILLS RD	CONTRACT NO. 64B79	
	PLOT DATE = 9/29/2010	DATE - 10/01/10	REVISED -								FED. ROAD DIST. NO. ILLINOIS FED. AID PROJECT		
											* F.A.P. 303 & F.A.U. 5146		