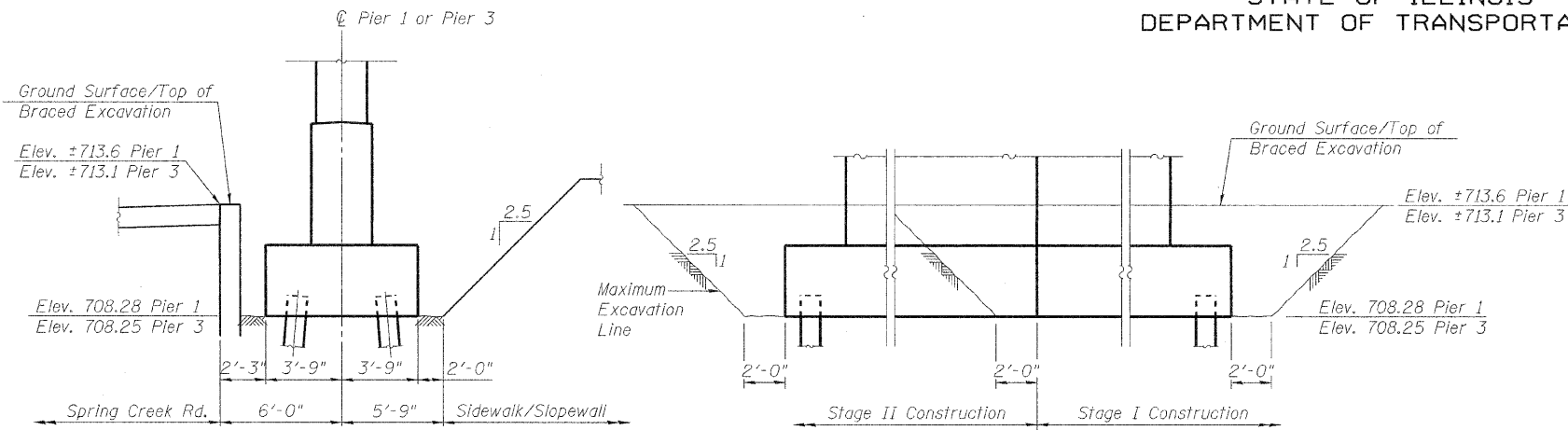


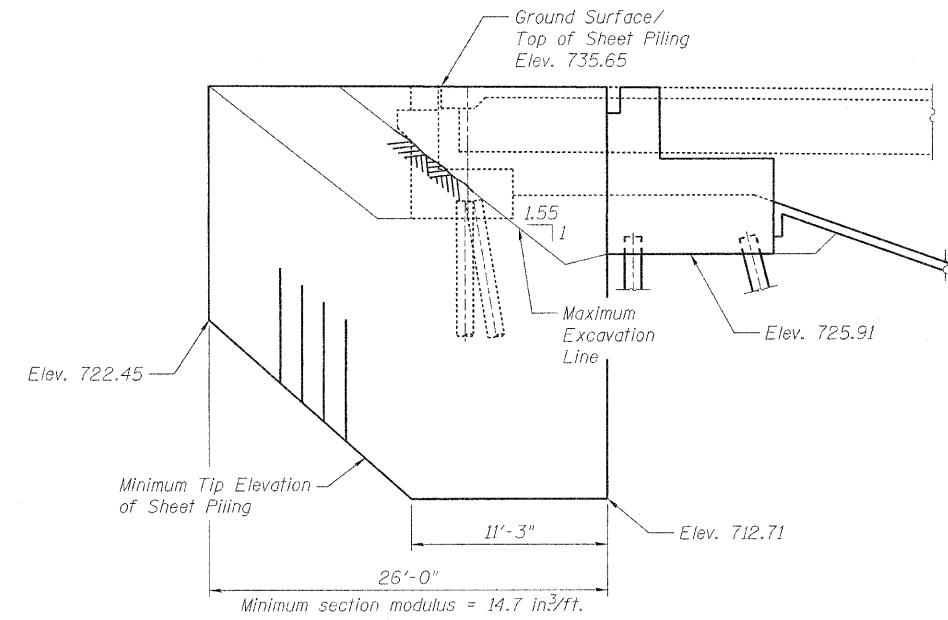
STATE OF ILLINOIS  
DEPARTMENT OF TRANSPORTATION



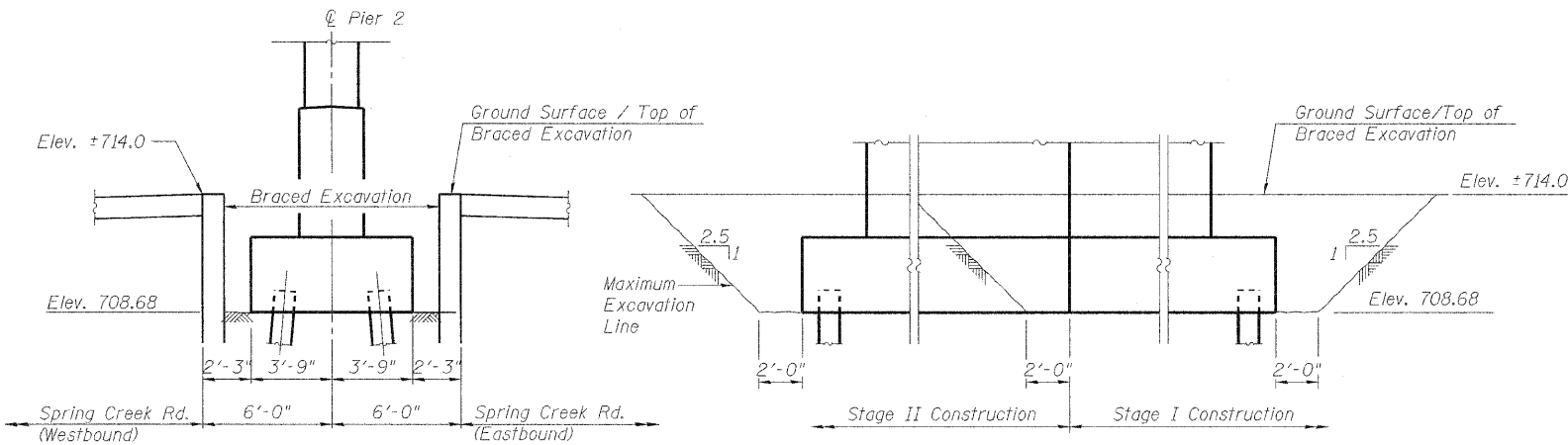
**SECTION AT PIER 1 AND 3**  
(Pier 1 Looking East, Pier 3 Looking West)  
Distances shown perpendicular  
to  $\phi$  Spring Creek Rd.

**ELEVATION AT PIER 1 AND 3**

**BRACED EXCAVATION AT PIERS 1 AND 3**



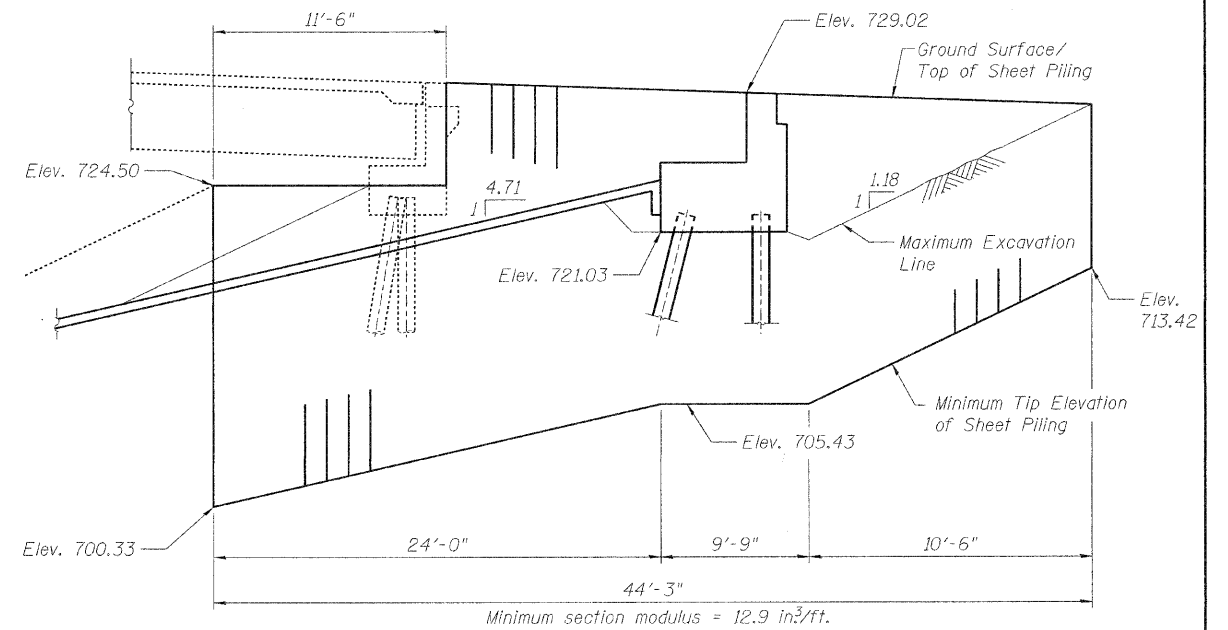
**SOUTH ABUTMENT  
SHEET PILE ELEVATION**



**SECTION AT PIER 2**  
(Looking East)  
Distances shown perpendicular  
to  $\phi$  Spring Creek Rd.

**ELEVATION AT PIER 2**

**BRACED EXCAVATION AT PIER 2**



**NORTH ABUTMENT  
SHEET PILE ELEVATION**

**SUBSTRUCTURE EXCAVATION DETAILS  
STRUCTURE NO. 101-0190**

Notes:

If the Contractor chooses to alter the temporary cantilevered sheet piling design requirements shown on the plans, a design submittal including plan details and calculations will be required for review and acceptance by the Engineer.

The Contractor shall connect the first sheet to the existing abutment wall to ensure the stability of sheets driven to the top of the existing footing. This connection shall be reviewed and accepted by the Engineer and included in the cost of Temporary Sheet Piling.

DESIGNED	- JY
CHECKED	- GSP
DRAWN	- MJB
CHECKED	- JY

SHEET NO. 4 61 SHEETS	F.A.* RTE.	SECTION	COUNTY	TOTAL SHEETS	SHEET NO.
	*	1-HBR & 1-2HB-D	WINNEBAGO	216	59
IL RTE 251 & FOREST HILLS RD CONTRACT NO. 64B79					
FED. ROAD DIST. NO. 7 ILLINOIS FED. AID PROJECT					

\* F.A.P. 303 & F.A.U. 5146

g:\project\2082723\_001\cadd\structural\sheet\1010190-64B79-004-SubExcavation.dgn 11:07:31 AM 9/20/2010