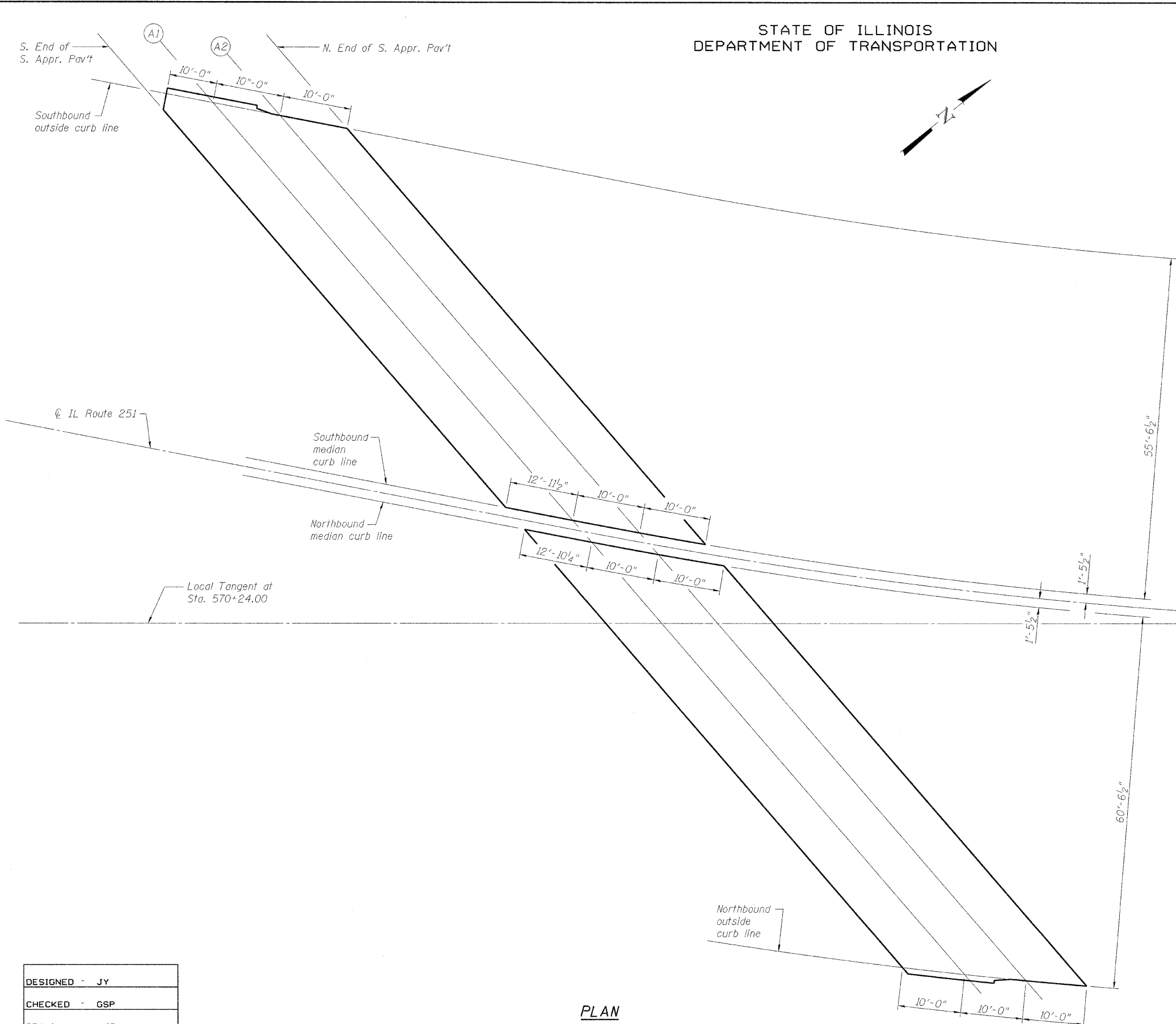


STATE OF ILLINOIS
DEPARTMENT OF TRANSPORTATION



PLAN

SOUTHBOUND OUTSIDE CURB LINE

Location	Station	Offset	Theoretical Grade Elevations
S. End of S. Appr. Pav't	567+87.93	-57.00	734.63
A1	567+97.93	-57.00	734.71
A2	568+07.93	-57.00	734.77
N. End of S. Appr. Pav't	568+17.93	-57.00	735.12

SOUTHBOUND MEDIAN CURB LINE

Location	Station	Offset	Theoretical Grade Elevations
S. End of S. Appr. Pav't	568+54.73	-1.46	735.69
A1	568+67.69	-1.46	735.66
A2	568+77.70	-1.46	735.61
N. End of S. Appr. Pav't	568+87.72	-1.46	735.55

NORTHBOUND MEDIAN CURB LINE

Location	Station	Offset	Theoretical Grade Elevations
S. End of S. Appr. Pav't	568+58.40	1.46	735.75
A1	568+71.25	1.46	735.71
A2	568+81.24	1.46	735.66
N. End of S. Appr. Pav't	568+91.22	1.46	735.60

NOHBOUND OUTSIDE CURB LINE

Location	Station	Offset	Theoretical Grade Elevations
S. End of S. Appr. Pav't	569+27.60	62.00	736.75
A1	569+36.89	62.00	736.63
A2	569+46.18	62.00	736.49
N. End of S. Appr. Pav't	569+55.47	62.00	736.34

TOP OF APPROACH SLAB ELEVATIONS
SOUTH APPROACH
STRUCTURE NO. 101-0190

SHEET NO. 13	F.A.* RTE.	SECTION	COUNTY	TOTAL SHEETS	SHEET NO.
	*	1-HBR & 1-2HB-D	WINNEBAGO	216	68
61 SHEETS	IL RTE 251 & FOREST HILLS RD CONTRACT NO. 64B79				
FED. ROAD DIST. NO. 7 ILLINOIS FED. AID PROJECT					

* F.A.P. 303 & F.A.U. 5146

DESIGNED - JY
CHECKED - GSP
DRAWN - MJB
CHECKED - JY

9/20/2010 11:08:05 AM g:\project\208273_001\cadd\structural\sheet\1010190-64B79-013-Appr_EL_SB.dgn

