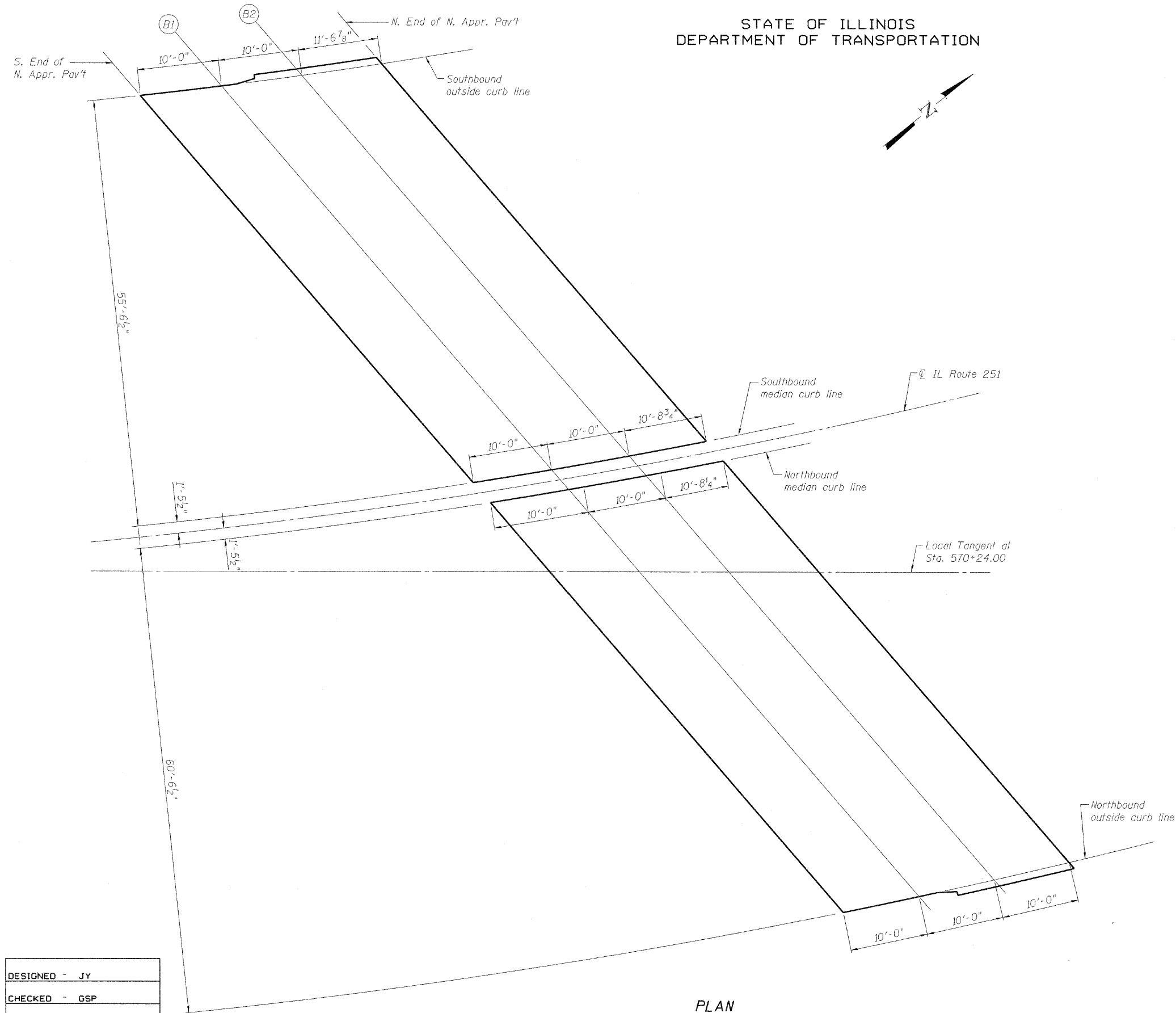


STATE OF ILLINOIS
DEPARTMENT OF TRANSPORTATION



PLAN

| | |
|----------|-------|
| DESIGNED | - JY |
| CHECKED | - GSP |
| DRAWN | - MJB |
| CHECKED | - JY |

SOUTHBOUND OUTSIDE CURB LINE

| Location | Station | Offset | Theoretical Grade Elevations |
|--------------------------|-----------|--------|------------------------------|
| S. End of N. Appr. Pav't | 571+14.97 | -57.00 | 728.85 |
| B1 | 571+25.72 | -57.00 | 728.46 |
| B2 | 571+36.48 | -57.00 | 728.08 |
| N. End of N. Appr. Pav't | 571+48.93 | -57.00 | 727.63 |

SOUTHBOUND MEDIAN CURB LINE

| Location | Station | Offset | Theoretical Grade Elevations |
|--------------------------|-----------|--------|------------------------------|
| S. End of N. Appr. Pav't | 571+52.38 | -1.46 | 728.90 |
| B1 | 571+62.40 | -1.46 | 728.54 |
| B2 | 571+72.42 | -1.46 | 728.18 |
| N. End of N. Appr. Pav't | 571+83.16 | -1.46 | 727.80 |

NORTHBOUND MEDIAN CURB LINE

| Location | Station | Offset | Theoretical Grade Elevations |
|--------------------------|-----------|--------|------------------------------|
| S. End of N. Appr. Pav't | 571+54.18 | 1.46 | 728.91 |
| B1 | 571+64.16 | 1.46 | 728.55 |
| B2 | 571+74.15 | 1.46 | 728.19 |
| N. End of N. Appr. Pav't | 571+84.81 | 1.46 | 727.81 |

NOTHBOUND OUTSIDE CURB LINE

| Location | Station | Offset | Theoretical Grade Elevations |
|--------------------------|-----------|--------|------------------------------|
| S. End of N. Appr. Pav't | 571+88.31 | 62.00 | 729.20 |
| B1 | 571+97.60 | 62.00 | 728.87 |
| B2 | 572+06.90 | 62.00 | 728.54 |
| N. End of N. Appr. Pav't | 572+16.19 | 62.00 | 728.21 |

TOP OF APPROACH SLAB ELEVATIONS
NORTH APPROACH
STRUCTURE NO. 101-0190

| | | | | | |
|---|---|-----------------|-----------|-----------------|--------------|
| SHEET NO. 14 | F.A.* RTE. | SECTION | COUNTY | TOTAL SHEETS | SHEET NO. |
| | * | 1-HBR & 1-2HB-D | WINNEBAGO | 216 | 69 |
| 61 SHEETS | IL RTE 251 & FOREST HILLS RD CONTRACT NO. 64B79 | | | | |
| FED. ROAD DIST. NO. 7 ILLINOIS FED. AID PROJECT | | | | | |

* F.A.P. 303 & F.A.U. 5146

9/30/2010 11:08:08 AM g:\project\208273_001\cadd\structural\sheet\1010190-64B79-014-ApprEL_NB.dgn